

FOR LEASE St. Petersburg Retail

8440 4th St N | St. Petersburg, FL 33702

Lease Rate: \$29.00 SF/YR (NNN)
Size: 4,800± SF
Term: 5 - 10 years

Colliers



Betsy Shafer

Associate Vice President
Tampa Bay
+1 727 742 6392
betsy.shafer@colliers.com

Colliers

4830 W Kennedy Blvd, Suite 300
Tampa, FL 32609
colliers.com/tampa

Property Details

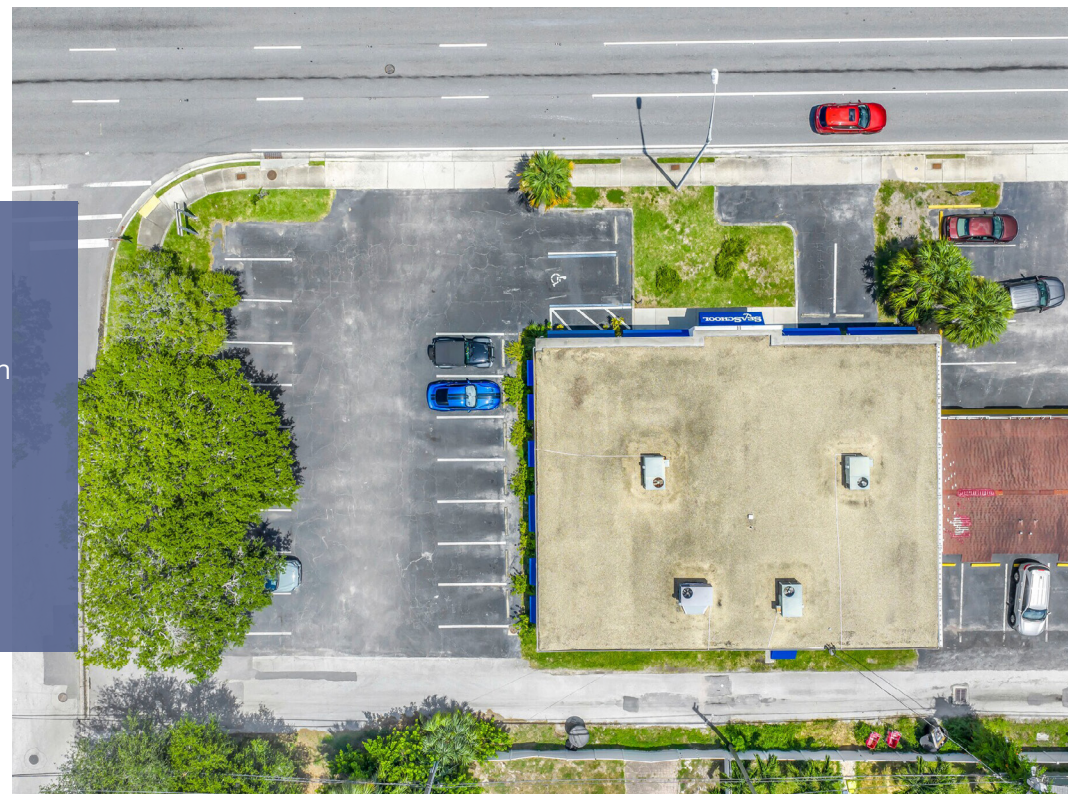
We are pleased to offer 8440 4th Street North for lease. Bring your business to our spacious stand alone building located along one of St. Petersburg's most highly trafficked corridors. Options are limitless with the open, updated floor plan, high ceilings and 2 large ADA restrooms. The building offers two curb cuts off 4th Street N in the front, alley access in the back and a large private parking lot with 22 spaces as well as street parking on 85th Avenue N. The property is zoned CCS-1, which allows for a wide variety of uses, including all types of retail, professional office, medical office, service and many others. The property is conveniently located near major thoroughfares and surrounded by established neighborhoods, national retailers, and dining options.

Property Highlights

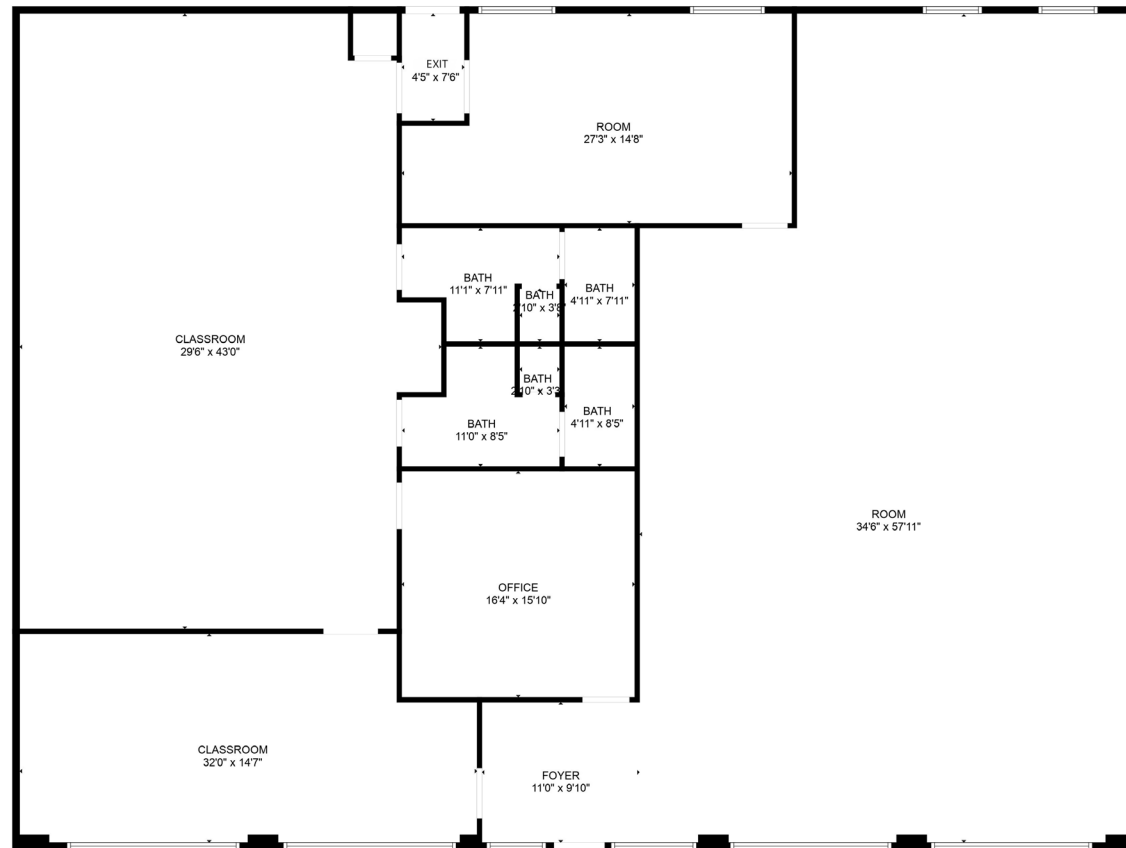
- **Building:** Stand alone 4,800± SF building.
- **Features:** Updated space with open floor plan and high ceilings.
- **Parking:** Large private parking lot with 22 spaces.
- **Location:** Located along the 4th Street corridor with excellent visibility and exposure.
- **Zoning:** CCS-1 zoning offering a wide variety of uses.



Colliers



Floor Plan

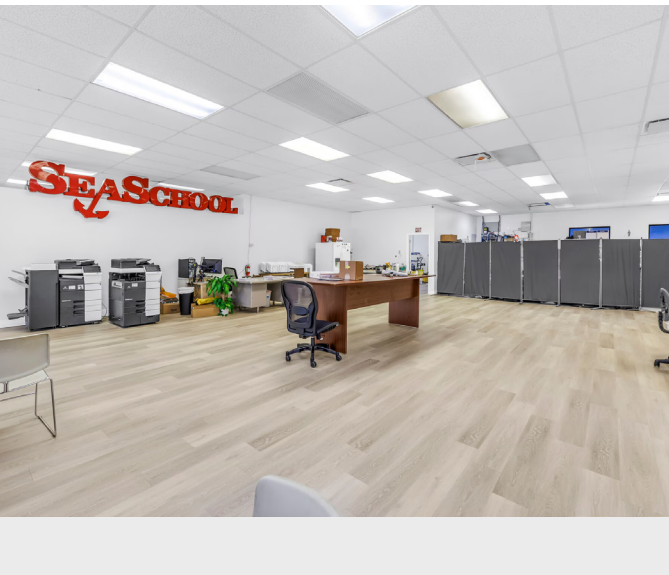
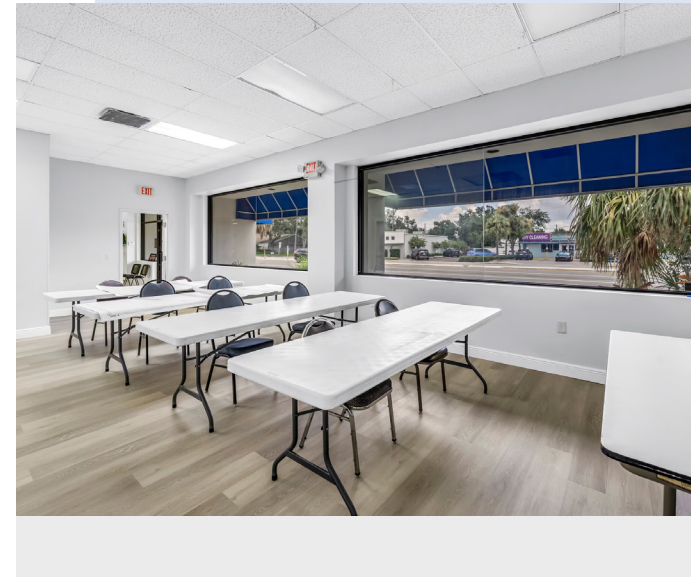


FLOOR PLAN CREATED BY CUBICASA APP. MEASUREMENTS DEEMED HIGHLY RELIABLE BUT NOT GUARANTEED.

Photo Gallery

Interior

Colliers



Location

A Strategic Location

Located along one of St. Petersburg's most highly trafficked corridors, 8440 4th Street North provides excellent visibility, accessibility and exposure.

Colliers





4830 W. Kennedy Blvd., Suite 300
Tampa, FL 33609
colliers.com/tampa

Contact Me

Betsy Shafer
Associate Vice President
Tampa Bay
+1 727 742 6392
betsy.shafer@colliers.com

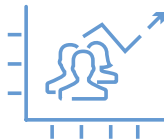
Area Demographics

Source: ESRI Market Potential - Retail, 2025



Population
(2025)

1 Mile	14,541
2 Mile	41,692
3 Mile	78,517



Population
Projection (2030)

14,398
42,571
79,828



Median Household
Income (2025)

\$62,892
\$70,989
\$74,561



Projected Median
Household Income (2030)

\$72,883
\$79,843
\$84,116

This document/email has been prepared by Colliers for advertising and general information only. Colliers makes no guarantees, representations or warranties of any kind, expressed or implied, regarding the information including, but not limited to, warranties of content, accuracy and reliability. Any interested party should undertake their own inquiries as to the accuracy of the information. Colliers excludes unequivocally all inferred or implied terms, conditions and warranties arising out of this document and excludes all liability for loss and damages arising there from. This publication is the copyrighted property of Colliers and /or its licensor(s). ©2025. All rights reserved. This communication is not intended to cause or induce breach of an existing listing agreement. Colliers International Florida, LLC