

For Lease

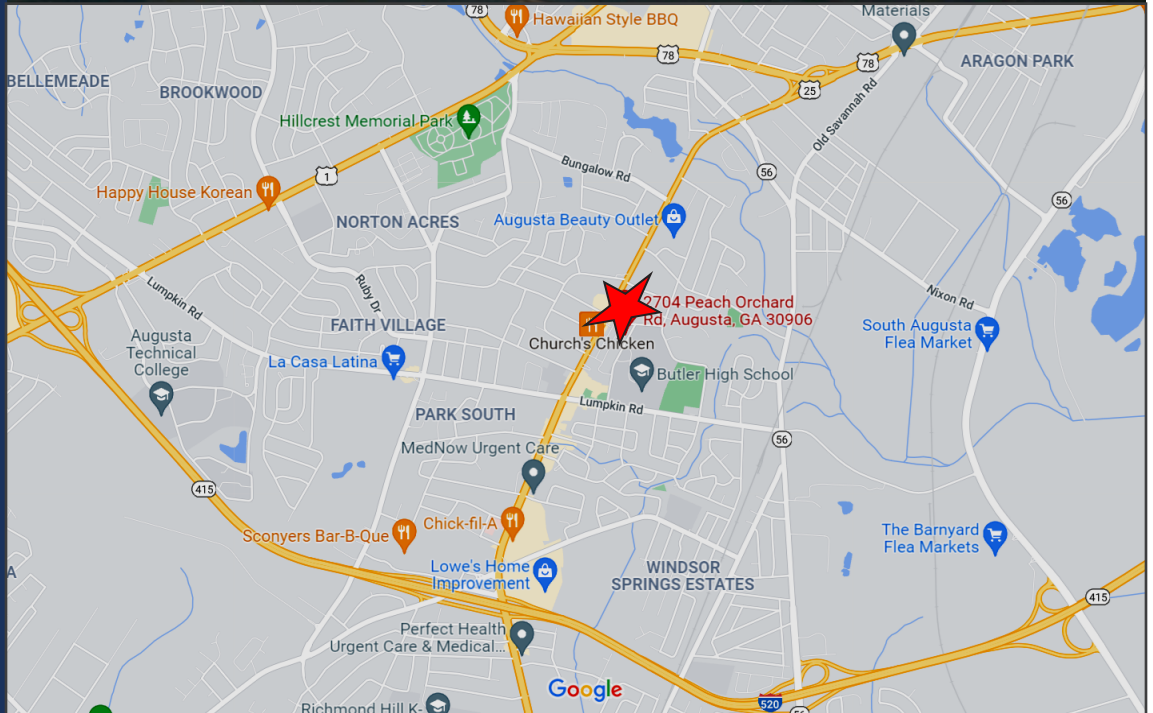
Peach Orchard Shopping Center

2708 Peach Orchard Road

Augusta, Georgia



- Space available: 8,983 SF, 15,214 SF and 21,653 SF
- Rent negotiable
- Tenants include: Big Lots, Family Dollar, Plasma Center, Cricket, Beauty Supply
- Shopping center is 150,000 SF
- Traffic Count: 21,400



2023 Demographics

Estimated Population

1 mile radius: 8,466
3 mile radius: 46,077
5 mile radius: 111,405

Est. Household Income

1 mile radius: \$ 45,908
3 mile radius: \$ 49,047
5 mile radius: \$ 61,359

Estimated Median Age

1 mile radius: 34.67
3 mile radius: 35.89
5 mile radius: 36.38

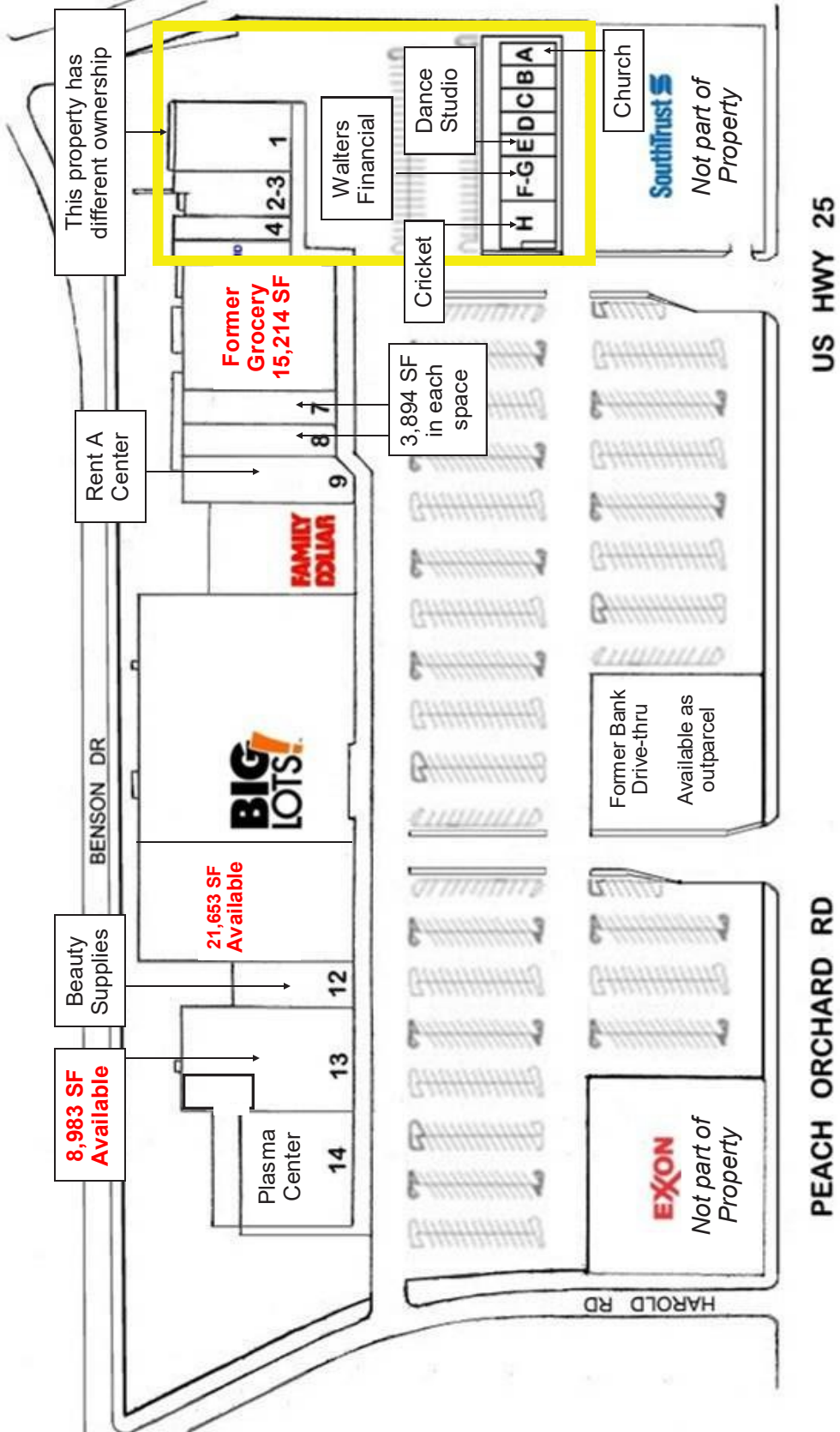
For more information and personal showing contact:

CHARLIE WARFIELD

Brookside Properties
2002 Richard Jones Rd, Ste C-200
Nashville, TN 37215
Mobile 615.330.9689
Office 615.467.3400
Fax 615.988.1547



Peach Orchard Shopping Center



Peach Orchard Plaza

AVAILABLE SPACE	
Suite 1	6,273 SF
Suite 2	4,080 SF
Suite 7	3,894 SF
Suite 8	3,894 SF
Suite 11-B	21,653 SF
Suite 13	9,480 SF

This property has different ownership

Rent A Center

Beauty Supplies

8,983 SF Available

Former Grocery 15,214 SF

21,653 SF Available

Plasma Center

Walters Financial

3,894 SF in each space

Cricket

Dance Studio

HAROLD RD

EXON
Not part of Property

Former Bank Drive-thru
Available as outparcel

Church
SouthTrust
Not part of Property

PEACH ORCHARD RD

US HWY 25

Peach Orchard Shopping Center



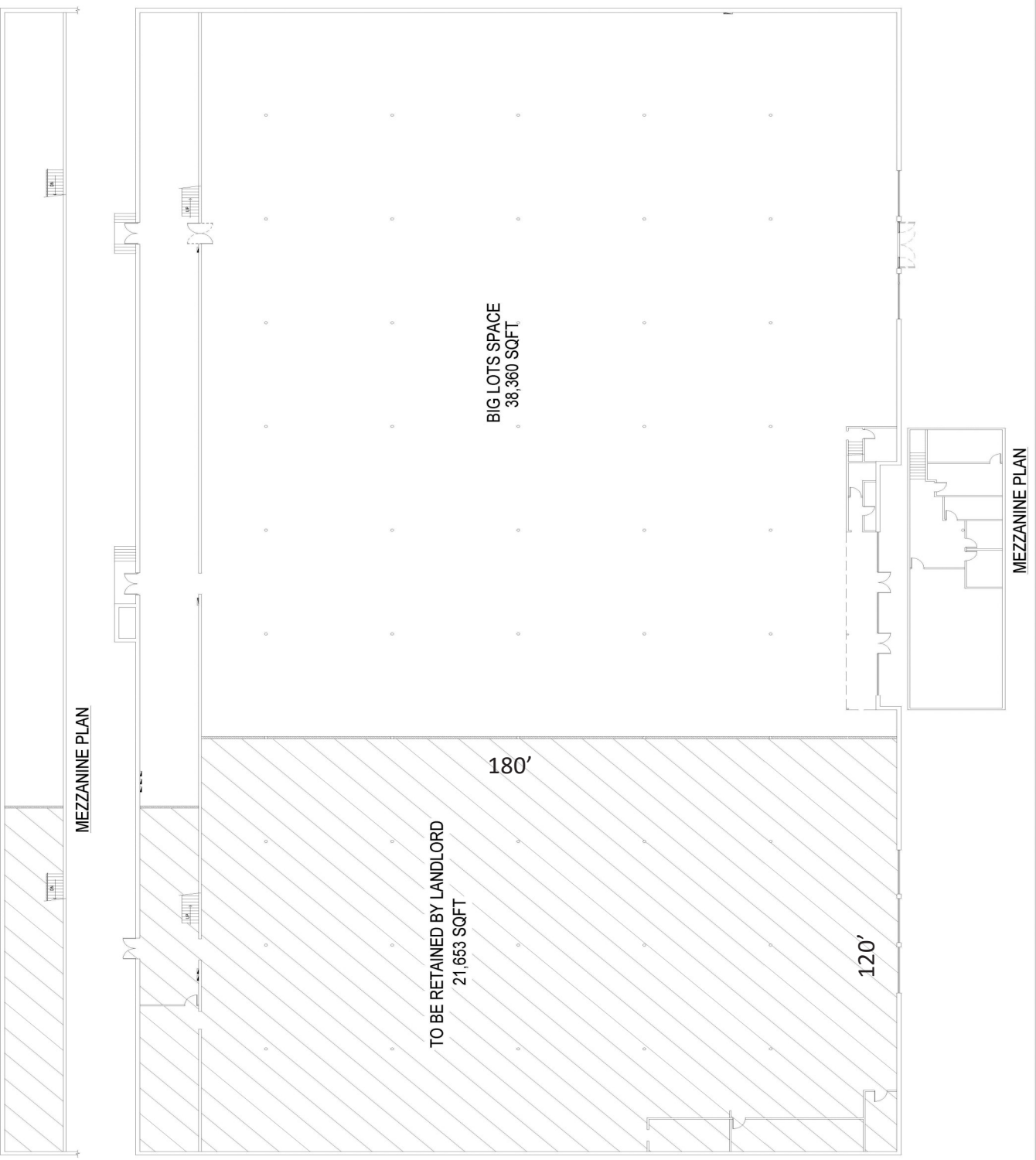
BIG LOTS
BIG LOTS STORES, INC.
SHEET:

BIG LOTS STORES, INC.
STORE PLANNING DEPT.
300 PHILLIP ROAD
COLUMBUS, OHIO 43228
PHONE: (614) 279-6800

DATE DRAWN: 1-30-97
DRAWN BY: JLM
SCALE: 3/32" = 1'-0"
TOTAL BUILDING AREA: 58,993 SQFT
SALES FLOOR AREA: 38,360 SQFT

BIG LOTS STORE # 03
PEACH ORCHARD PLAZA
2708 PEACH ORCHARD ROAD
AUGUSTA, GEORGIA 30906

DATE: 1-30-97
REVISION: REVISED STORE LAYOUT AND ADDED A CSA AREA BELOW
REVISED STORE LAYOUT PER BLOCK 11 - BMM
REMOVED CHECKOUT CABINET PER REGISTER REDUCTION
2016 DOWNSIZE
11-28-15
8-5-15
8-1-14
8-1-14



Peach Orchard Shopping Center

