



Keegan & Coppin
COMPANY, INC.

FOR LEASE

1100, 1110, 1120 MAR WEST
BELVEDERE TIBURON, CA

Office for Lease



Go beyond broker.

REPRESENTED BY:

VESA BECAM, PARTNER
LIC # 01459190 (415) 461-1010, EXT 114
VESA@KEEGANCOPPIN.COM

MATT STORMS, PARTNER
LIC # 01233478 (415) 461-1010, EXT 123
MSTORMS@KEEGANCOPPIN.COM



OFFICE SPACE FOR LEASE

PROPERTY INFORMATION



1100, 1110, 1120 MAR WEST
BELVEDERE TIBURON, CA

OFFICE FOR LEASE

HIGHLIGHTS

- Excellent Downtown Location and Visibility
- High Ceilings & Extensive Glass Line
- Close to Several Amenities Including Ferry Terminal

OFFICE SPACE

1100 Mar West

Suite F: 1,555+/- sq ft

1110 Mar West

Suite C: 484+/- sq ft

Suite D: 1,109+/- sq ft

Suite M: 754+/- sq ft

Suite N: 284+/- sq ft

DESCRIPTION

Large open office, storage, kitchenette

2 rooms, access to common kitchen.

Second floor office with reception and 4 private offices.

Ground floor office, large reception area with one private office.

Ground floor open office.

LEASE TERMS

Size

284 - 1,555+/- sq ft

Rate

\$3.50 per sq ft

Terms

Full service

Short term leases possible

Keegan & Coppin Co., Inc.
101 Larkspur Landing Circle, Ste. 112
Larkspur, CA 94939
www.keegancoppin.com
(415) 461-1010

The above information, while not guaranteed, has been secured from sources we believe to be reliable. Submitted subject to error, change or withdrawal. An interested party should verify the status of the property and the information herein.

REPRESENTED BY:

VESA BECAM, PARTNER
LIC # 01459190 (415) 461-1010, EXT 114
VESA@KEEGANCOPPIN.COM

MATT STORMS, PARTNER
LIC # 01233478 (415) 461-1010, EXT 123
MSTORMS@KEEGANCOPPIN.COM



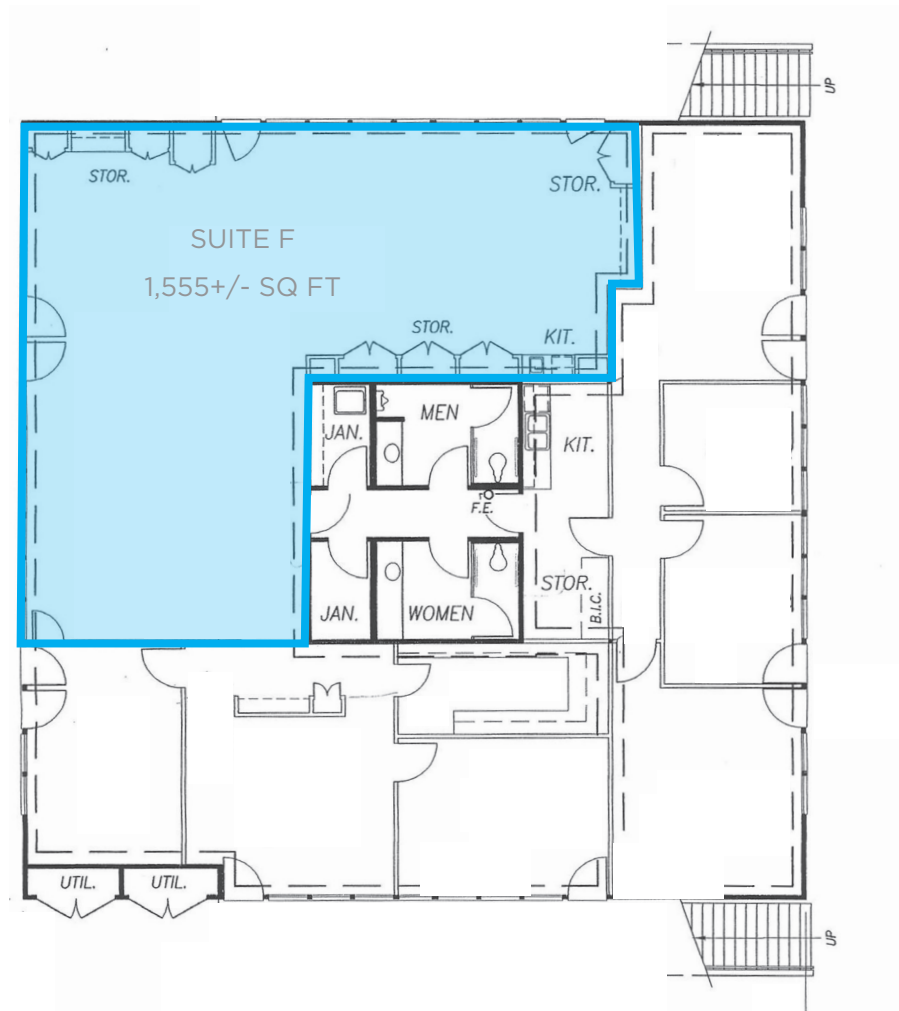
FLOOR PLAN



1100, 1110, 1120 MAR WEST
BELVEDERE TIBURON, CA

OFFICE FOR LEASE

1100 MAR WEST



REPRESENTED BY:

VESA BECAM, PARTNER
LIC # 01459190 (415) 461-1010, EXT 114
VESA@KEEGANCOPPIN.COM

MATT STORMS, PARTNER
LIC # 01233478 (415) 461-1010, EXT 123
MSTORMS@KEEGANCOPPIN.COM

The above information, while not guaranteed, has been secured from sources we believe to be reliable. Submitted subject to error, change or withdrawal. An interested party should verify the status of the property and the information herein.



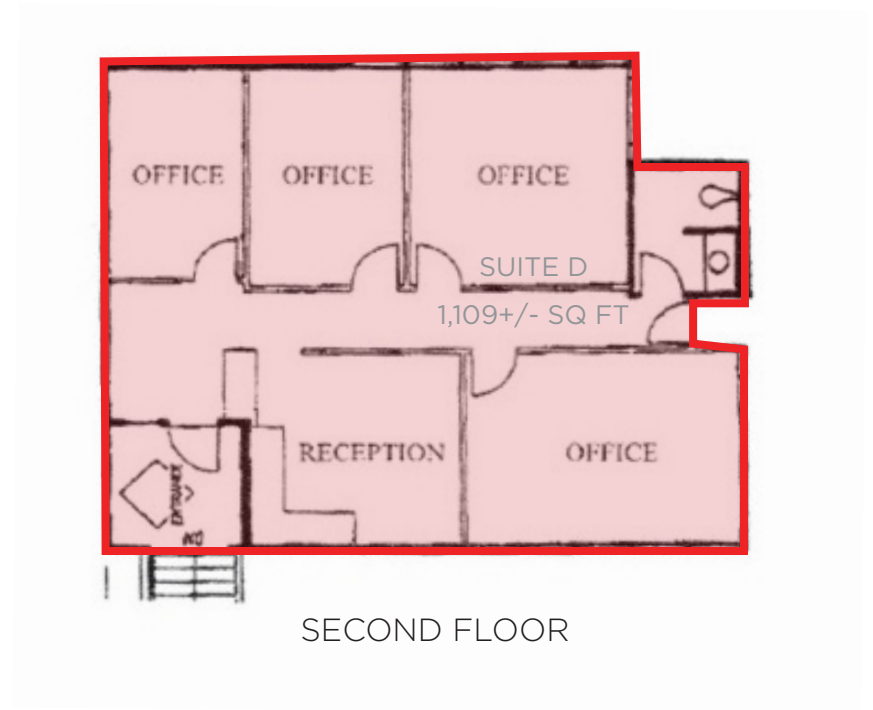
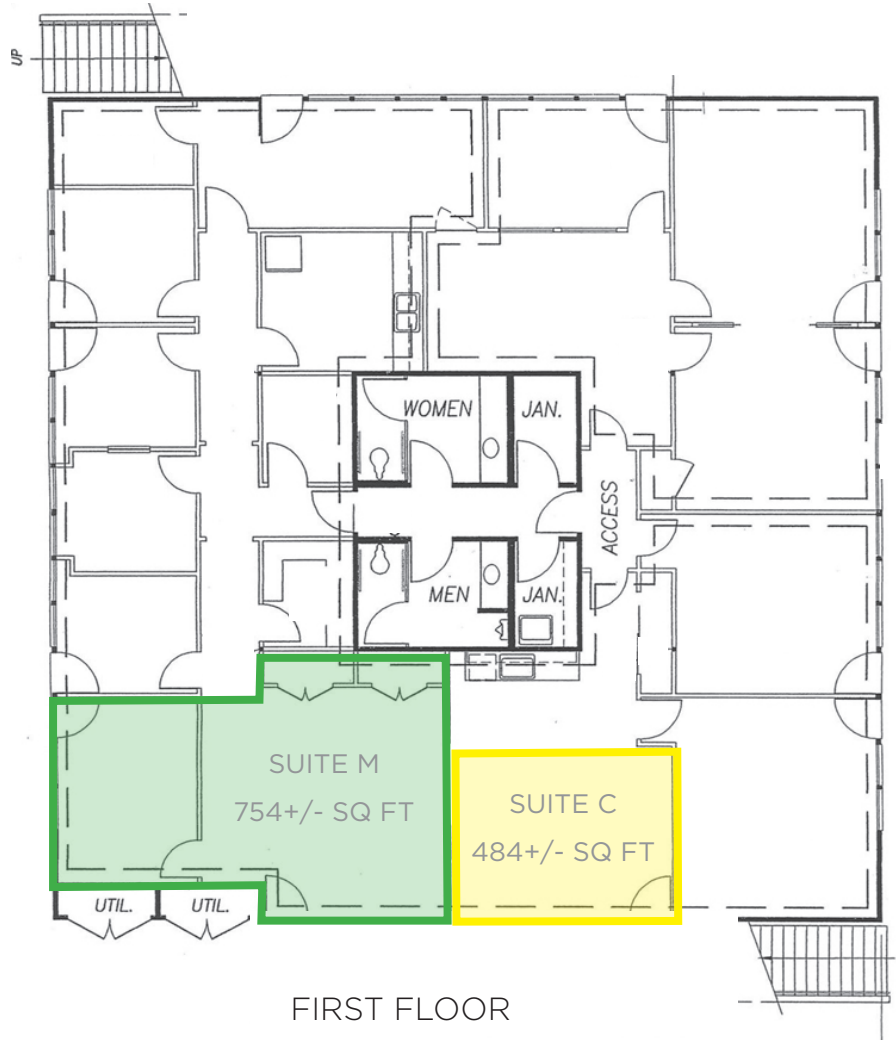
FLOOR PLAN



1100, 1110, 1120 MAR WEST
BELVEDERE TIBURON, CA

OFFICE FOR LEASE

1110 MAR WEST



REPRESENTED BY:

VESA BECAM, PARTNER
LIC # 01459190 (415) 461-1010, EXT 114
VESA@KEEGANCOPPIN.COM

MATT STORMS, PARTNER
LIC # 01233478 (415) 461-1010, EXT 123
MSTORMS@KEEGANCOPPIN.COM

The above information, while not guaranteed, has been secured from sources we believe to be reliable. Submitted subject to error, change or withdrawal. An interested party should verify the status of the property and the information herein.