

The Colliers logo consists of the word "Colliers" in a white serif font, centered within a dark blue rounded rectangle. Below the text is a horizontal bar with a color gradient from yellow to red to blue.

Accelerating success.

A photograph of the Savage Medical Building, a two-story brick and glass structure. The building features a large arched entrance canopy supported by brick pillars. The words "SAVAGE MEDICAL BUILDING" are mounted on the brick facade above the entrance. To the right, the address "6350" is displayed on a tan section of the building. Large glass windows reflect the sky. A blue handicapped parking sign is visible in the foreground. The sky is blue with light clouds.

SAVAGE MEDICAL BUILDING

6350

Sublease Opportunity – 4,048 SF Medical

Savage Medical Building

6350 143rd Street | Savage, MN

Misty Bowe ccim

Senior Vice President

+1 952 897 7713

misty.bowe@colliers.com

Louis Suarez ccim, SIOR

Senior Vice President

+1 952 837 3061

louis.suarez@colliers.com

1600 Utica Avenue South

Suite 300

Minneapolis, MN 55416

P: +1 952 897 7700

Property Profile



- 4,048 SF medical office sublease available through July 2028 within established medical office building
- Functional plug-and-play medical office layout ideal for clinic, specialty care, therapy, wellness, or professional office users.
- Shared entry vestibule with adjacent tenant, including access to a common waiting room and reception/check-in area
- Located within a premier outpatient medical building alongside complimentary healthcare providers
- Ample parking with 150 surface stalls and convenient access to Dakota Avenue, Egan Drive, Highway 13, and the surrounding south metro

Building Information

Address	6350 143rd Street, Savage, MN 55378
Building Size	33,778 SF
Year Built	2011
Floors	Two (2)
Parking	150 Stalls

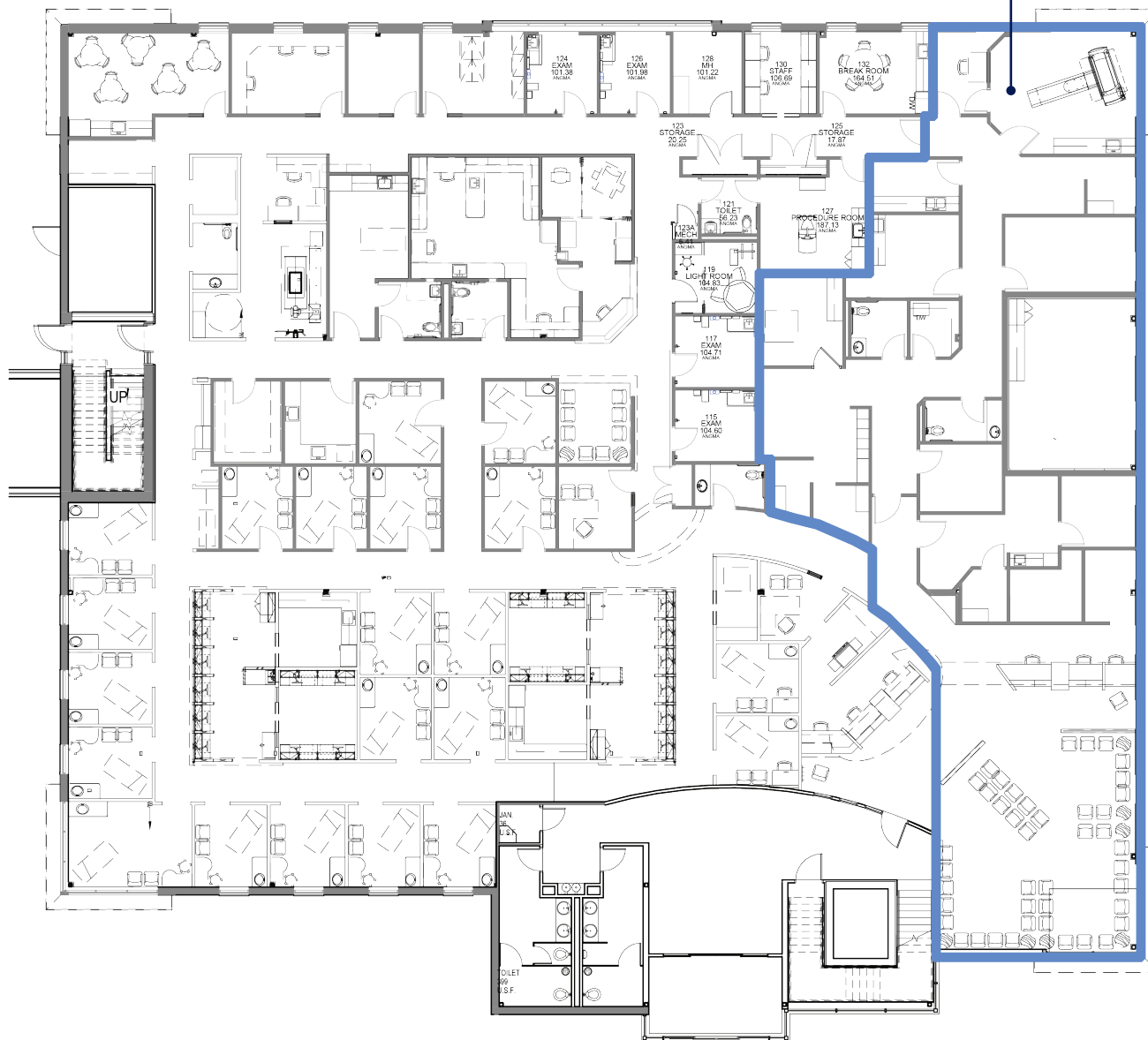
Sublease Terms

Space Available	Suite 100: 4,048 SF
Lease Expiration	July 31, 2028
Date Available	Immediately
Net Rental Rate	Negotiable
2026 Tax & CAM	\$24.81 PSF Total

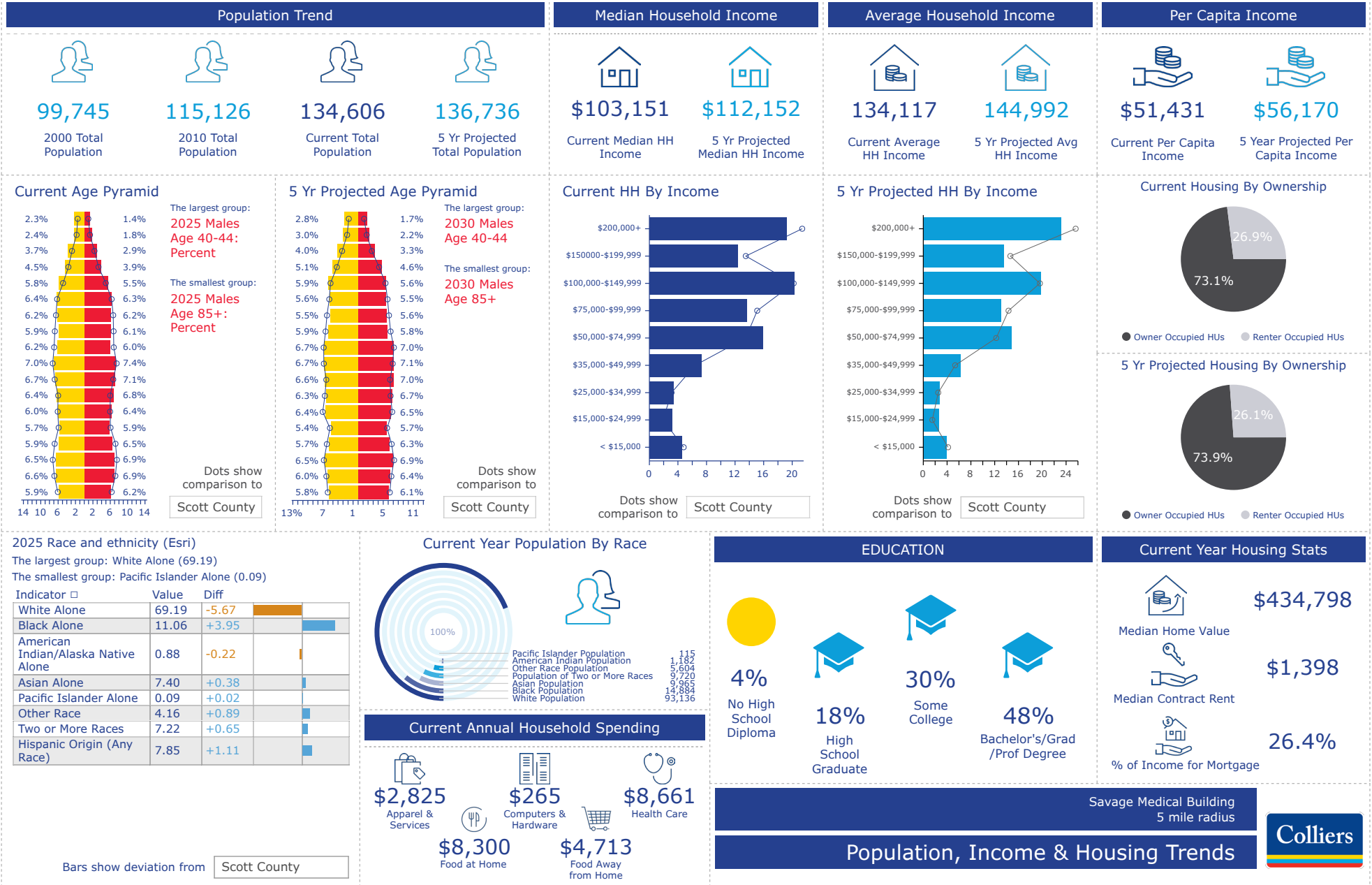


Floor Plan

Suite 100
4,048 SF
Available
Immediately



Population, Income & Housing Trend



Market Scenario Planner: Outpatient

Data and Analytics Market Scenario Planner - Outpatient						Annual Volume Estimates Based on 5 YR CAGR				
Service Line	2024 Volume	2029 Volume	2034 Volume	5 Yr Growth	10 Yr Growth	5 YR Compound Annual Growth Rate (CAGR)	2025 Volume Estimate	2026 Volume Estimate	2027 Volume Estimate	2028 Volume Estimate
Endocrinology	3,493	4,420	4,943	26.5%	41.5%	4.82%	3,661	3,837	4,022	4,216
Psychiatry	220,825	259,600	276,851	17.6%	25.4%	3.29%	228,086	235,587	243,334	251,335
Physical Therapy/Rehabilitation	416,258	483,586	548,644	16.2%	31.8%	3.04%	428,928	441,984	455,438	469,301
Spine	3,229	3,691	3,989	14.3%	23.5%	2.71%	3,316	3,406	3,498	3,593
Cardiology	158,419	176,528	195,716	11.4%	23.5%	2.19%	161,885	165,428	169,048	172,747
Vascular	26,932	29,947	32,953	11.2%	22.4%	2.14%	27,509	28,099	28,702	29,318
Miscellaneous Services	335,304	369,640	402,165	10.2%	19.9%	1.97%	341,905	348,637	355,502	362,502
Ophthalmology	144,600	158,791	171,710	9.8%	18.7%	1.89%	147,332	150,117	152,954	155,845
Lab	712,508	779,329	843,570	9.4%	18.4%	1.81%	725,397	738,519	751,879	765,481
Pain Management	18,328	20,032	21,505	9.3%	17.3%	1.79%	18,656	18,991	19,331	19,678
ENT	53,433	58,367	63,159	9.2%	18.2%	1.78%	54,384	55,354	56,340	57,345
Orthopedics	48,702	52,856	58,259	8.5%	19.6%	1.65%	49,505	50,322	51,153	51,997
Podiatry	26,749	28,961	31,438	8.3%	17.5%	1.60%	27,177	27,612	28,054	28,504
Oncology	24,261	26,133	28,072	7.7%	15.7%	1.50%	24,624	24,993	25,367	25,747
Nephrology	8,508	9,055	9,496	6.4%	11.6%	1.25%	8,614	8,722	8,831	8,942
Evaluation and Management	1,733,015	1,840,779	1,891,798	6.2%	9.2%	1.21%	1,754,050	1,775,341	1,796,891	1,818,702
Cosmetic Procedures	12,466	13,206	13,254	5.9%	6.3%	1.16%	12,610	12,756	12,904	13,054
Trauma	12,155	12,833	13,494	5.6%	11.0%	1.09%	12,287	12,421	12,557	12,694
Neurology	27,614	29,153	30,575	5.6%	10.7%	1.09%	27,915	28,219	28,527	28,838
Radiology	471,971	497,117	523,823	5.3%	11.0%	1.04%	476,896	481,872	486,901	491,983
Dermatology	70,211	73,558	76,863	4.8%	9.5%	0.94%	70,867	71,530	72,200	72,876
Neurosurgery	1,460	1,527	1,668	4.6%	14.2%	0.90%	1,473	1,486	1,499	1,513
Thoracic Surgery	1,066	1,112	1,164	4.3%	9.2%	0.84%	1,075	1,084	1,093	1,102
General Surgery	9,425	9,753	10,106	3.5%	7.2%	0.69%	9,489	9,555	9,620	9,686
Gastroenterology	38,425	39,512	40,225	2.8%	4.7%	0.56%	38,640	38,856	39,073	39,292
Urology	15,735	15,937	16,580	1.3%	5.4%	0.25%	15,775	15,815	15,855	15,896
Obstetrics	6,020	5,914	6,052	-1.8%	0.5%	-0.35%	5,998	5,977	5,956	5,935
Gynecology	14,722	14,315	14,291	-2.8%	-2.9%	-0.56%	14,639	14,557	14,476	14,395
Pulmonology	22,072	20,987	19,545	-4.9%	-11.4%	-1.00%	21,850	21,631	21,414	21,199

10 mile radius.

Source: The Outpatient Market Scenario Planner (MSP), as developed by the Advisory Board. MSP provides current and projected patient utilization estimates for specific specialties in key markets across the US. The MSP tool supports planners, providers and hospital executives to make intelligent business development and strategic decisions to locate or expand programs in targeted markets. For more information on the Advisory Board, please visit www.advisory.com.



County Road 42
23,400 vpd

Dakota Ave
11,979 vpd



1600 Utica Avenue South
Suite 300
Minneapolis, MN 55416
P: +1 952 897 7700

This document has been prepared by Colliers International for advertising and general information only. Colliers International makes no guarantees, representations or warranties of any kind, expressed or implied, regarding the information including, but not limited to, warranties of content, accuracy and reliability. Any interested party should undertake their own inquiries as to the accuracy of the information. Colliers International excludes unequivocally all inferred or implied terms, conditions and warranties arising out of this document and excludes all liability for loss and damages arising there from. This publication is the copyrighted property of Colliers International and/or its licensor(s). ©2026. All rights reserved.