



MAIDEN CHOICE MEDICAL CENTER

716 MAIDEN CHOICE LN | CATONSVILLE, MD 21228

FOR
SALE



MACKENZIE

COMMERCIAL REAL ESTATE SERVICES, LLC

PROPERTY OVERVIEW

HIGHLIGHTS:

- Two Contiguous Office Condos For Sale
- Turn-key and fully furnished
- Would make a great investment or office for Rheumatology, Orthopedic, Physical Therapy, etc.
- Close proximity to Wilkins Avenue, Route 372, I-695, with nearby access to I-95
- Lease with Doctor for suite 306 through 11/19/2027

AVAILABLE:

SUITE 301: 1,380 SF
SUITE 306: 920 SF
(CAN BE COMBINED TO 2,300 SF)

STORIES:

3

BUILDING SIZE:

18,263 SF

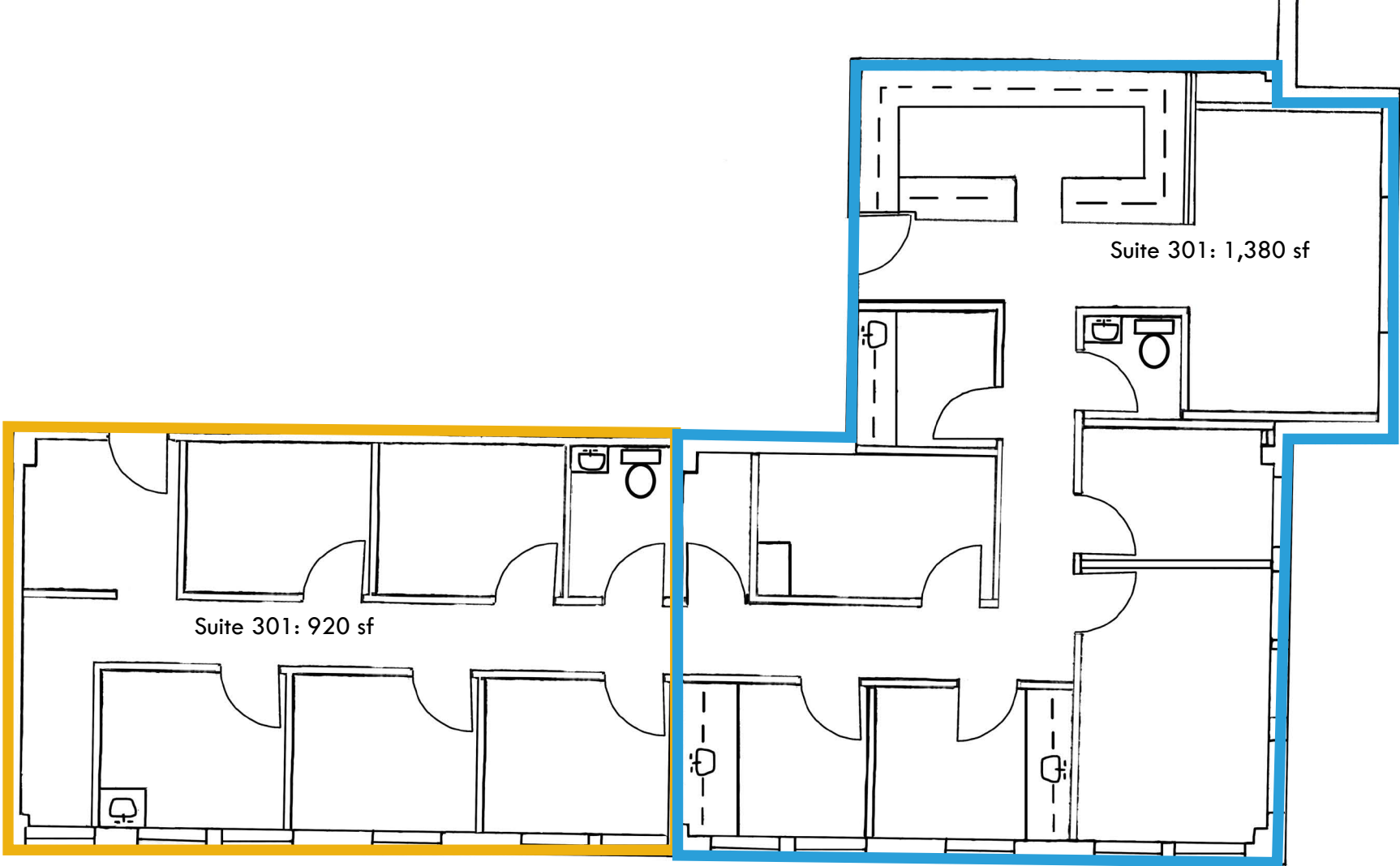
SALE PRICE:

NEGOTIABLE



GOOGLE STREET VIEW

FLOOR PLAN



LOCAL BIRDSEYE



INTERSTATE 695

Arbutus Plaza

weis
America's Best
WINGS
Walgreens TRUIST **HH**

H&R BLOCK
Advance Auto Parts

Chesapeake
Employers Insurance
Your workers' compensation specialist

UMBC

Wilkens Beltway Plaza

FIVE GUYS
BURGERS and FRIES

SUBWAY

MedStar Health **LeDo PIZZA**

HC **Giant**

WILKENS AVE

INTERSTATE 695

372

SITE

MAIDEN CHOICE LN

Charlestown
BY ERICKSON SENIOR LIVING

LITTLE SISTERS OF THE POOR
ST. MARTIN'S HOME, BALTIMORE

WESTERN TECH HS



DEMOGRAPHICS

2024

RADIUS:

1 MILE

3 MILES

5 MILES

RESIDENTIAL POPULATION



13,163

62,800

172,458

DAYTIME POPULATION



21,296

114,053

348,468

AVERAGE HOUSEHOLD INCOME



\$87,210

\$98,148

\$93,770

NUMBER OF HOUSEHOLDS



9,359

48,108

131,956

MEDIAN AGE

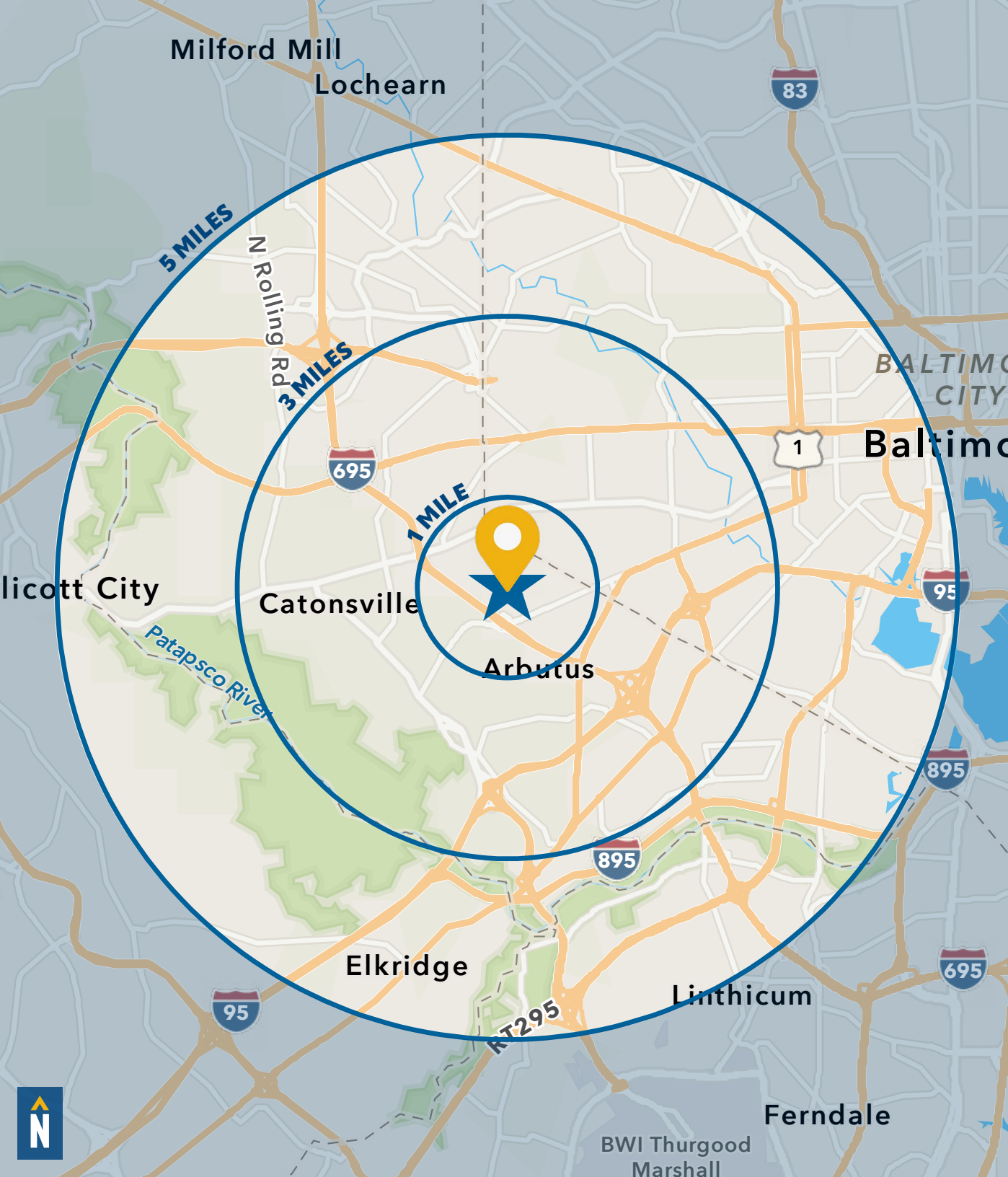


32.9

38.5

37.9

[FULL DEMOS REPORT](#)



FOR MORE INFO **CONTACT:**



ADAM NACHLAS

SENIOR VICE PRESIDENT

443.798.9343

ANACHLAS@mackenziecommercial.com

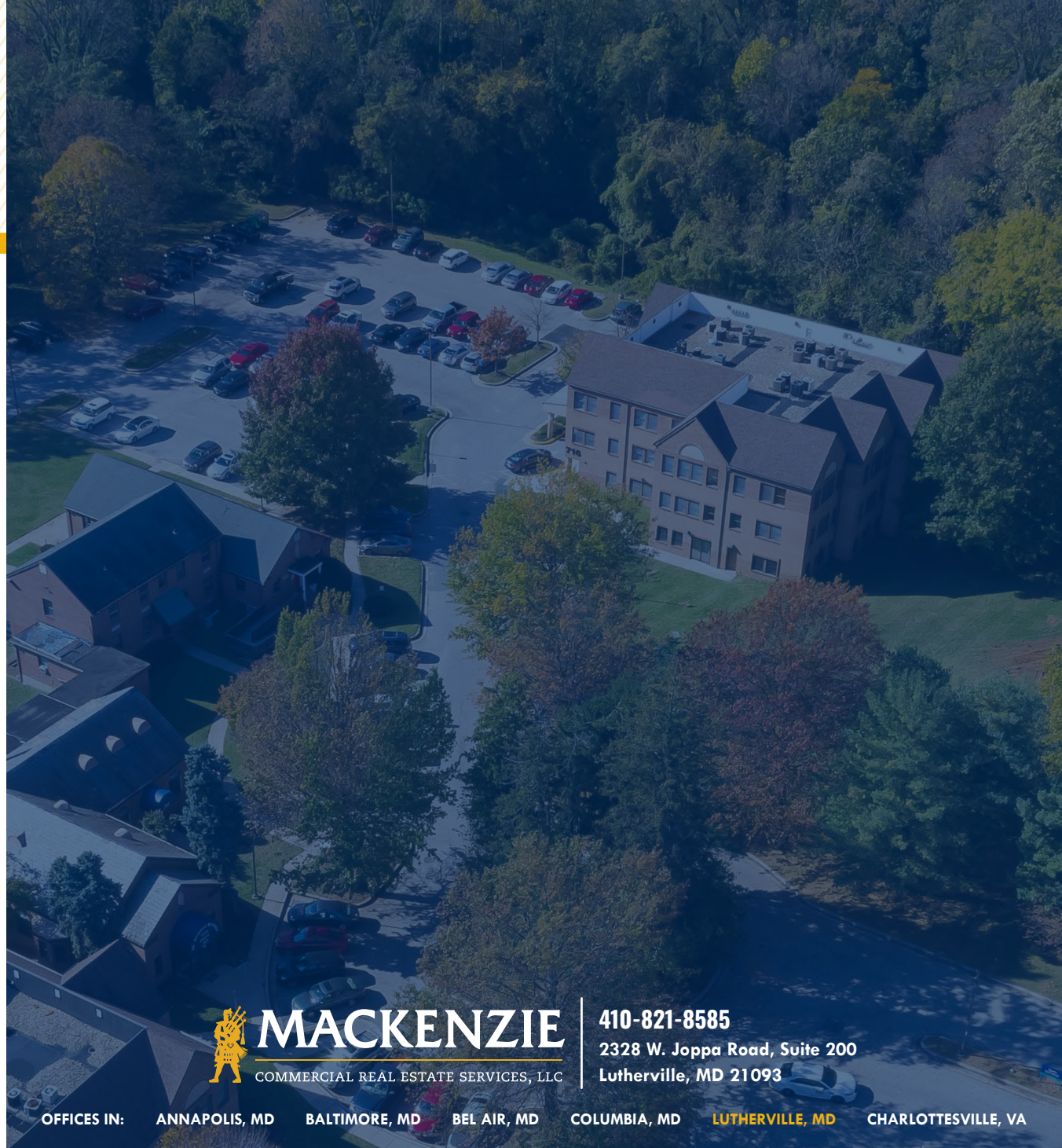


GRAHAM SEVY

REAL ESTATE ADVISOR

410.830.1399

GSEVY@mackenziecommercial.com



MACKENZIE

COMMERCIAL REAL ESTATE SERVICES, LLC

410-821-8585

2328 W. Joppa Road, Suite 200
Lutherville, MD 21093

OFFICES IN: ANNAPOLIS, MD BALTIMORE, MD BEL AIR, MD COLUMBIA, MD **LUTHERVILLE, MD** CHARLOTTESVILLE, VA

www.MACKENZIECOMMERCIAL.com



VISIT **PROPERTY PAGE** FOR MORE INFORMATION.

No warranty or representation, expressed or implied, is made as to the accuracy of the information contained herein, and same is submitted subject to errors, omissions, change of price, rental or other conditions, withdrawal without notice, and to any specific listing conditions imposed by our principals.