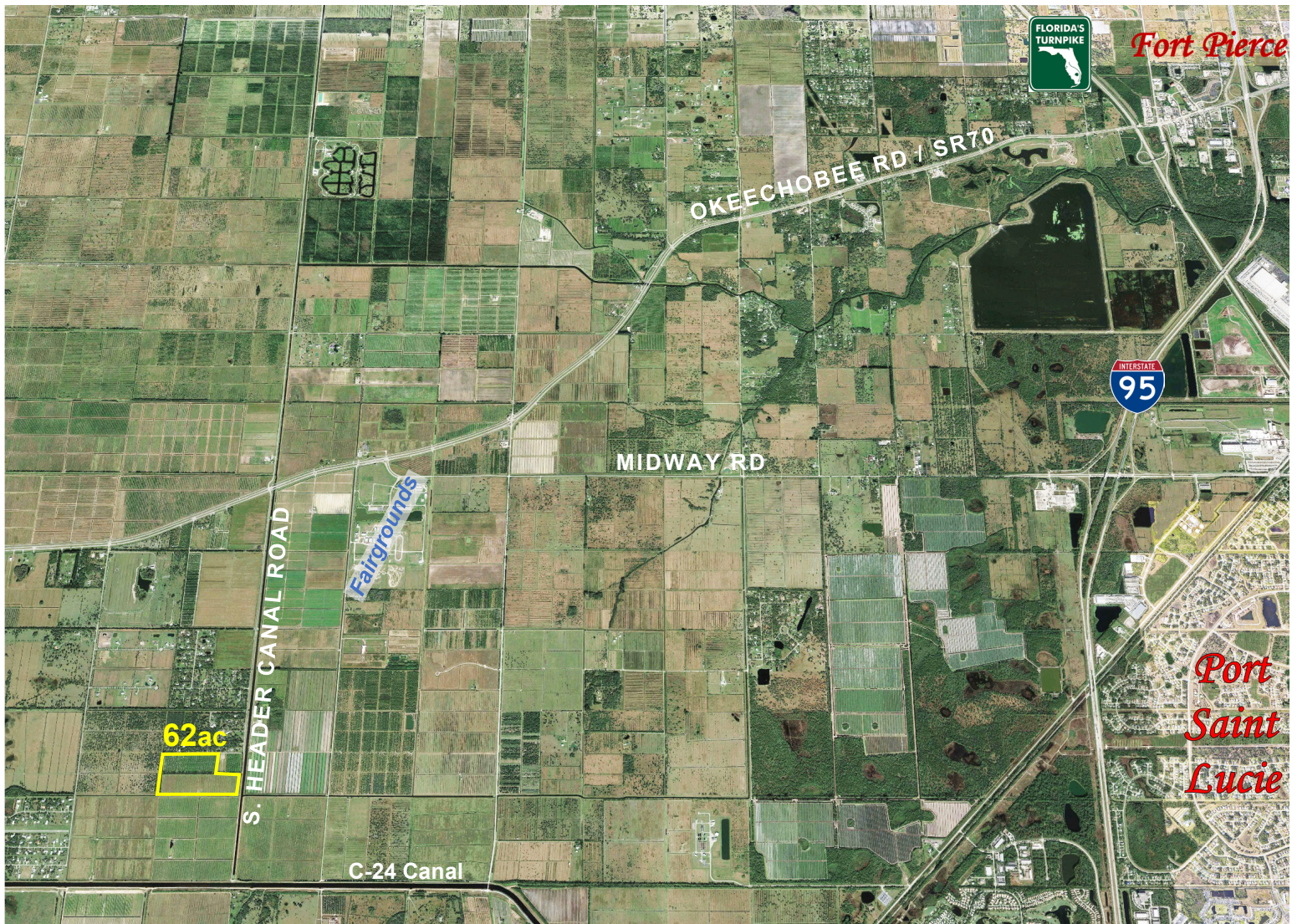


62ac AG Land

**South Header Canal Road
Saint Lucie County, FL 34987**

- 640ft Frontage on South Header Canal Rd
- Second Access by Easement on North Side of property
- Former Citrus Grove – AG-5 Zoning
- Agriculture Exempt 2023 Taxes: \$1,754.
- PID # 3214-131-0001-000-6
- MLS # RX-11020045



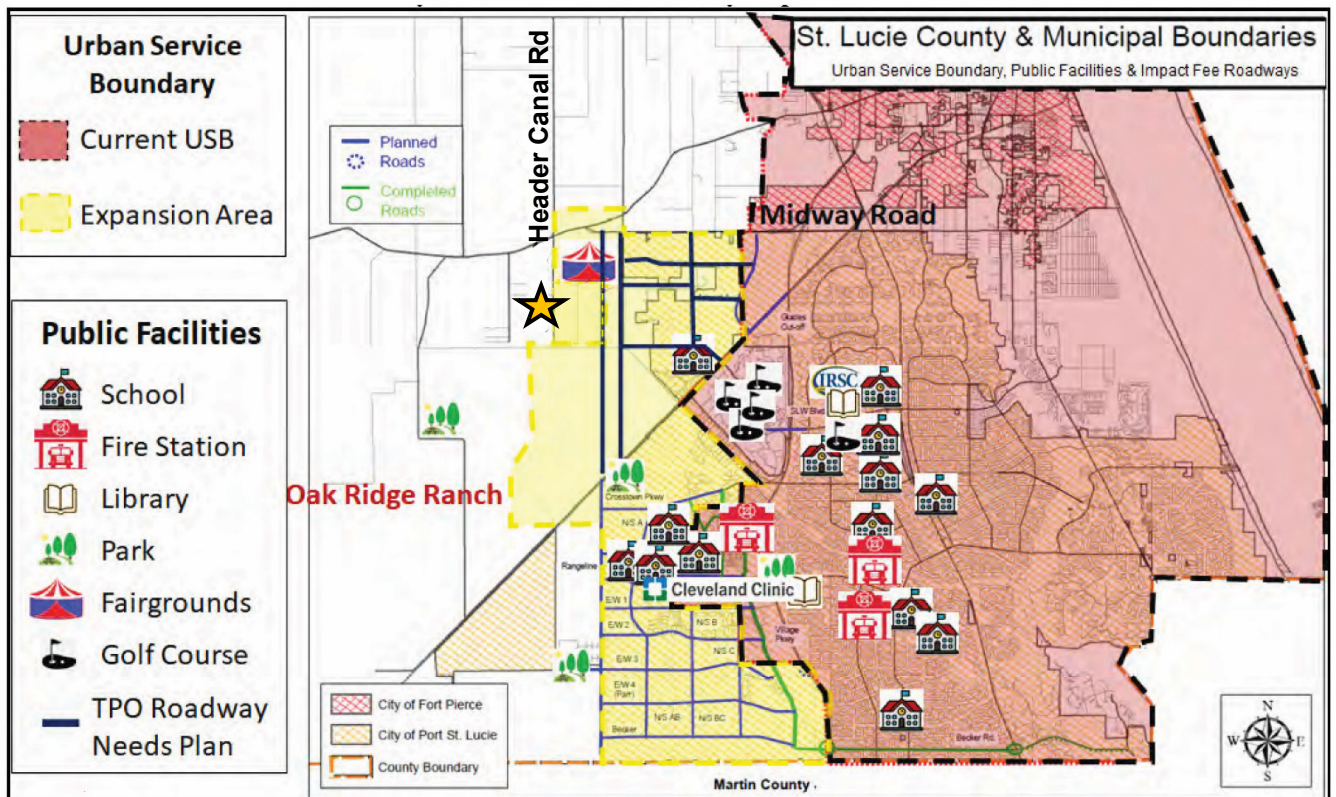
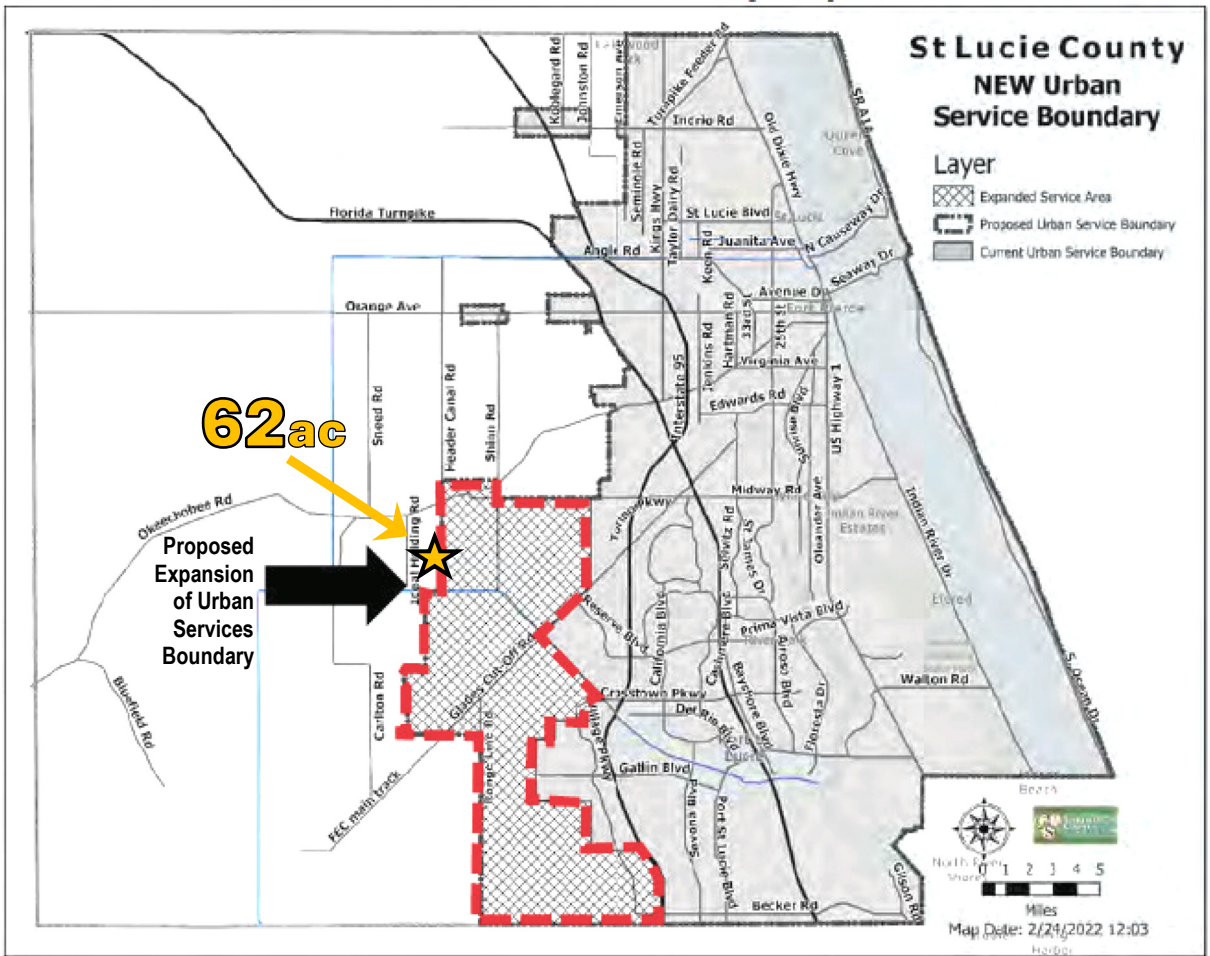
\$2,700,000.



**mark walters
& company**
real estate brokers & auctioneers

www.waltersco.com • mark@waltersco.com
531 South US Highway 1, Suite B, Fort Pierce, FL 34950
Office 772.468.8306 • Cell 772.201.5650

St. Lucie County Development and Growth Maps:



The information in this brochure, while believed to be accurate, is subject to verification by prospective purchasers and no liability for errors or omissions is assumed by Mark Walters & Company, its Broker or any of its Agents.