

195 Nassau Street

Princeton, New Jersey, 08542

Retail & Office For Lease

250 – 1,600 SF

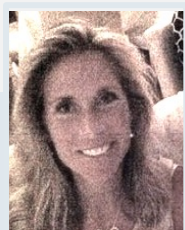


195 Nassau Street is a high-profile, attractive building in downtown Princeton. Retail suites consist of large-windowed spaces on Nassau Street ranging in size from 560 SF to 1,600 SF. The property sits next door to Princeton University campus and benefits from being at the high-traffic intersection of Nassau Street, Moore Street and Charlton Street.

- call for rates and availability -

CONTACT

Lauri Names
609-921-7655
lauri@princetonrealtymg.com



195 Nassau Street

Princeton, New Jersey, 08542

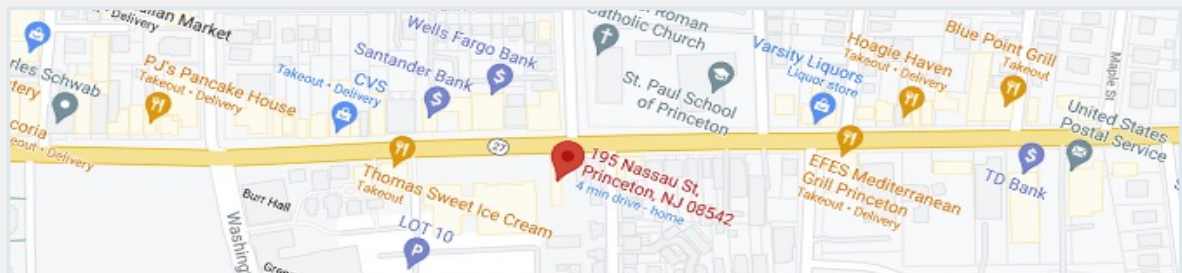
Retail & Office For Lease

250 – 1,600 SF

Nassau Street Retail Spaces



Retail spaces range in size from 560 SF to 1,600 SF. The property sits at the intersection of Nassau Street, Charlton Street and Moore Street and benefits from high visibility and average daily vehicle counts of 10,000+



CONTACT

Lauri Names
609-921-7655

lauri@princetonrealtymg.com

PRMG

PRINCETON REALTY MANAGEMENT GROUP LLC