

# 850 CANAL STREET

[www.850canal.com](http://www.850canal.com)



## FOR MORE INFORMATION, PLEASE CONTACT:

### **Brian Scruton**

203 326 5849

[brian.scruton@cushwake.com](mailto:brian.scruton@cushwake.com)

### **William Montague**

203 326 5865

[william.montague@cushwake.com](mailto:william.montague@cushwake.com)



A full commission computed and earned in accordance with the rates and conditions of our agency agreement with our principal, when received from our principal, will be paid to the cooperating broker who consummates a lease which is unconditionally executed and delivered by and between lessor and lessee (a copy of the rates and conditions referred to above is available upon request).

Property Information

# WATERFRONT LOFT-STYLE SPACE AVAILABLE

**SIZE**

4th Floor - 20,206 RSF\*  
1st Floor - 971 RSF  
3rd Floor - 4,499 RSF

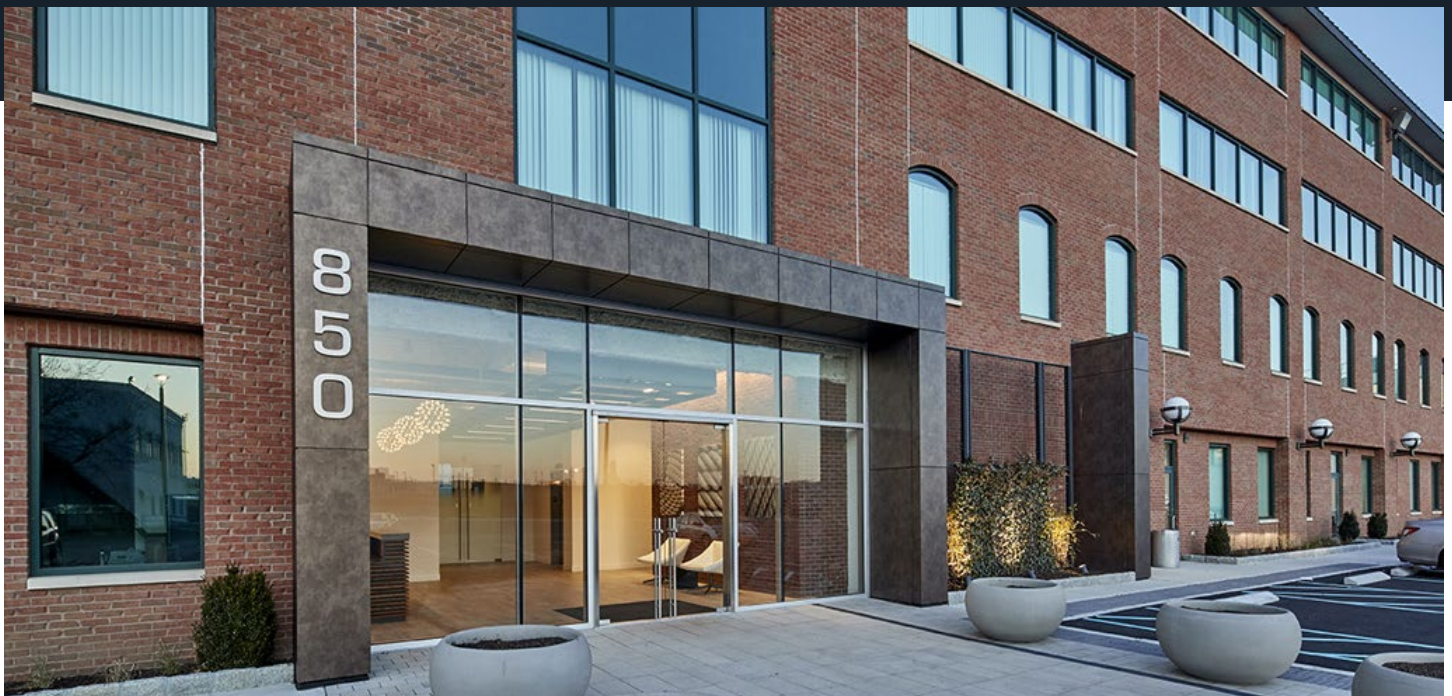
**ASKING RENT**

Upon Request

**AVAILABILITY**

1st & 3rd Floor - Immediate  
4th Floor - 12/1/2020

\*Divisible



## Property Information

# FEATURES

- Recently renovated lobby and corridors
- Campus-like setting with access to the cafeteria and fitness center at
- the ITV Entertainment Village
- Great water views
- **Serendipity Labs** - 23,000 RSF co-working facility
- Bike racks for exclusive tenant use
- Private shuttle to Metro North train station
- The GRANOLA Bar - a healthy breakfast and lunch cafe
- Ample parking

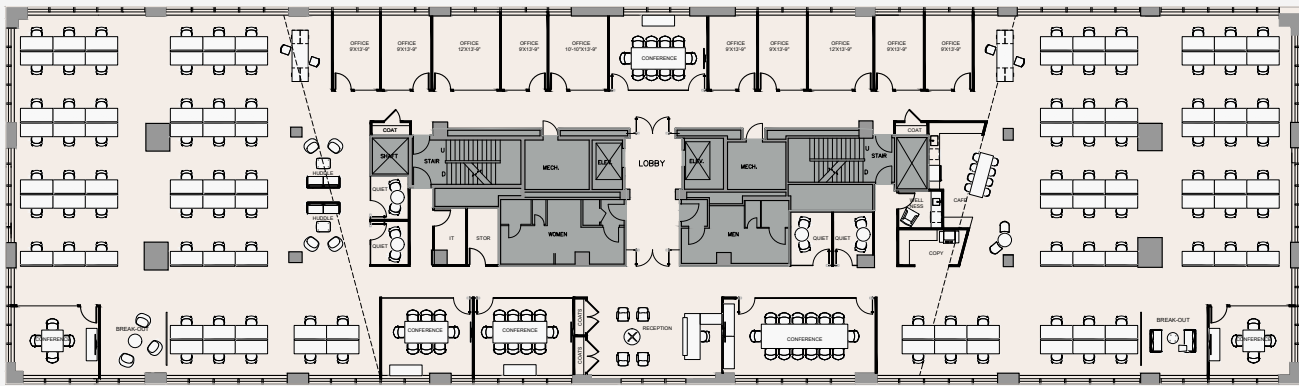


# FLOOR PLANS

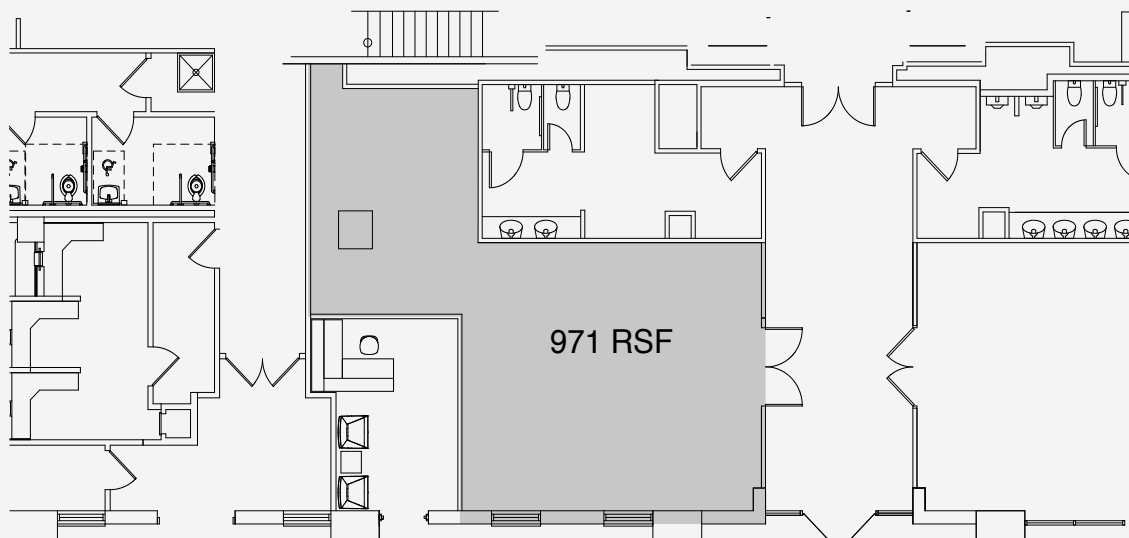


**4TH FLOOR | 20,206 RSF\***

*\*Divisible*



**1ST FLOOR | 971 RSF**

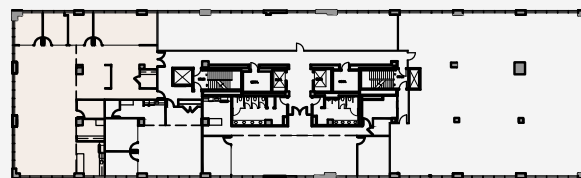
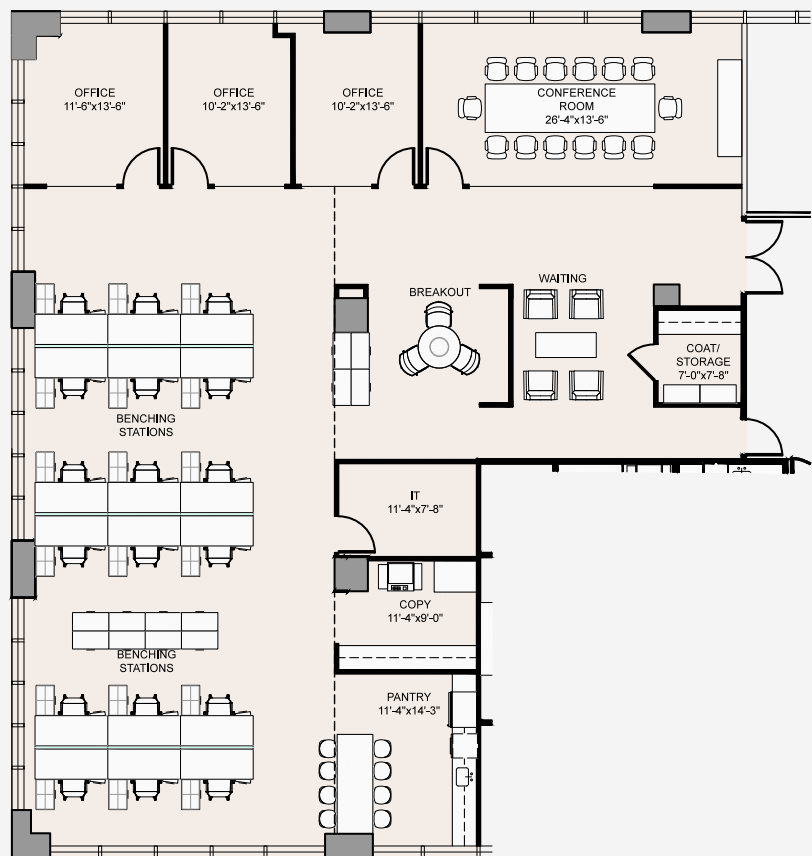


# FLOOR PLANS



## 3RD FLOOR | 4,499 RSF

Brand new pre-built with high end finishes with glass office fronts and wood sliding doors.



KEY PLAN