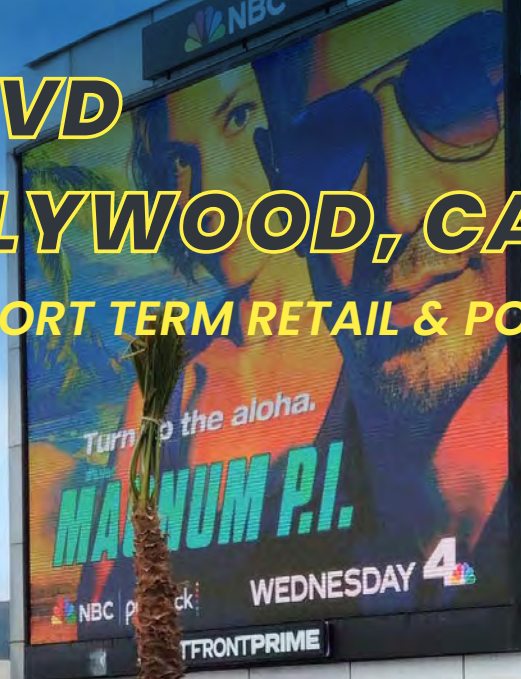


8410

SUNSET BLVD

WEST HOLLYWOOD, CA

SUNSET STRIP – SHORT TERM RETAIL & POP-UP SPACE



JARED SWEDELSON

Vice President
d: 818-742-1632
m: 818-644-7597
jswedelson@naicapital.com
Cal DRE Lic #02105146

NAI CAPITAL - WEST LOS ANGELES

11835 W. Olympic Blvd., Suite 700E
Los Angeles, CA 90064
d: 310-806-6100
f: 310-806-6101
www.naicapital.com

NAICapital
COMMERCIAL REAL ESTATE SERVICES, WORLDWIDE

Building Details



Size:
1,200 SF



Price:
\$5/SF gross

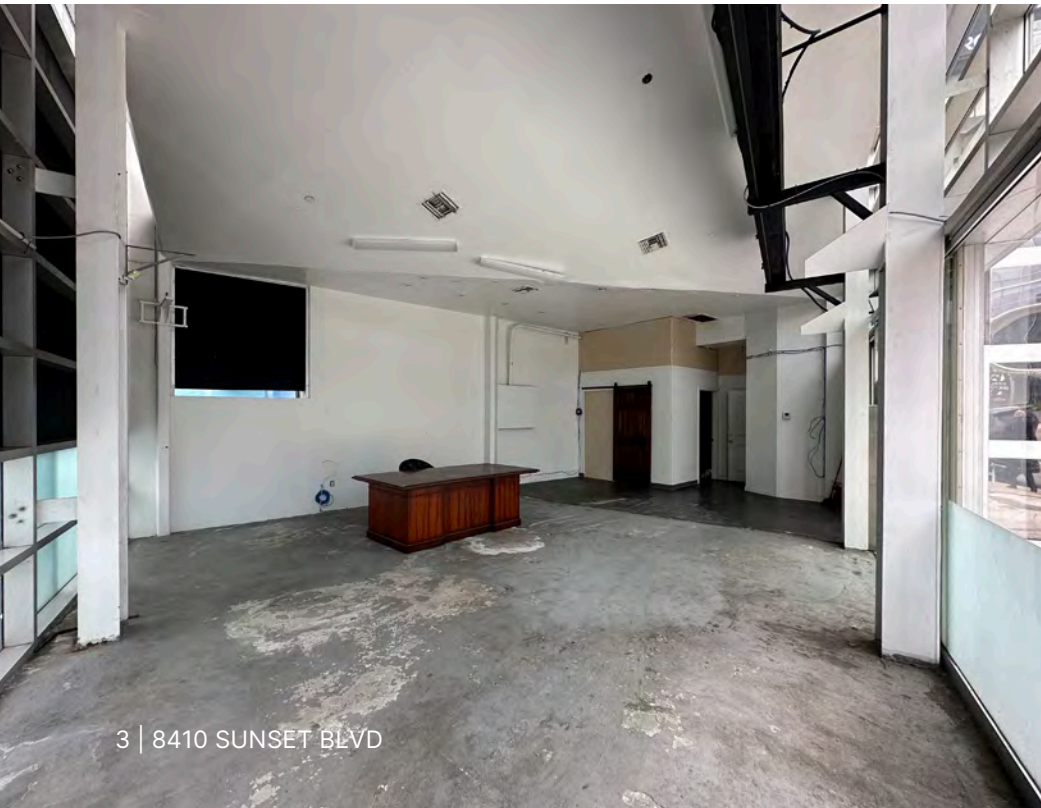
Property Description:

Incredible chance to secure a short-term lease or establish a dynamic pop-up presence on the renowned Sunset Strip, all at an exceptionally affordable rate. This opportunity allows you to lease a standalone retail space featuring expansive floor-to-ceiling windows, a private restroom, a convenient stock room, and spacious indoor/outdoor patio with glass sliding doors.

Key Highlights:

- One of a kind brand exposure opportunity
- Signage on the Strip
- Stand-alone building
- Ability to activate the front patio and Newsstand

Property Photos



3 | 8410 SUNSET BLVD

NAI Capital
COMMERCIAL REAL ESTATE SERVICES, WORLDWIDE

Traffic Count

Data provided by Sites USA



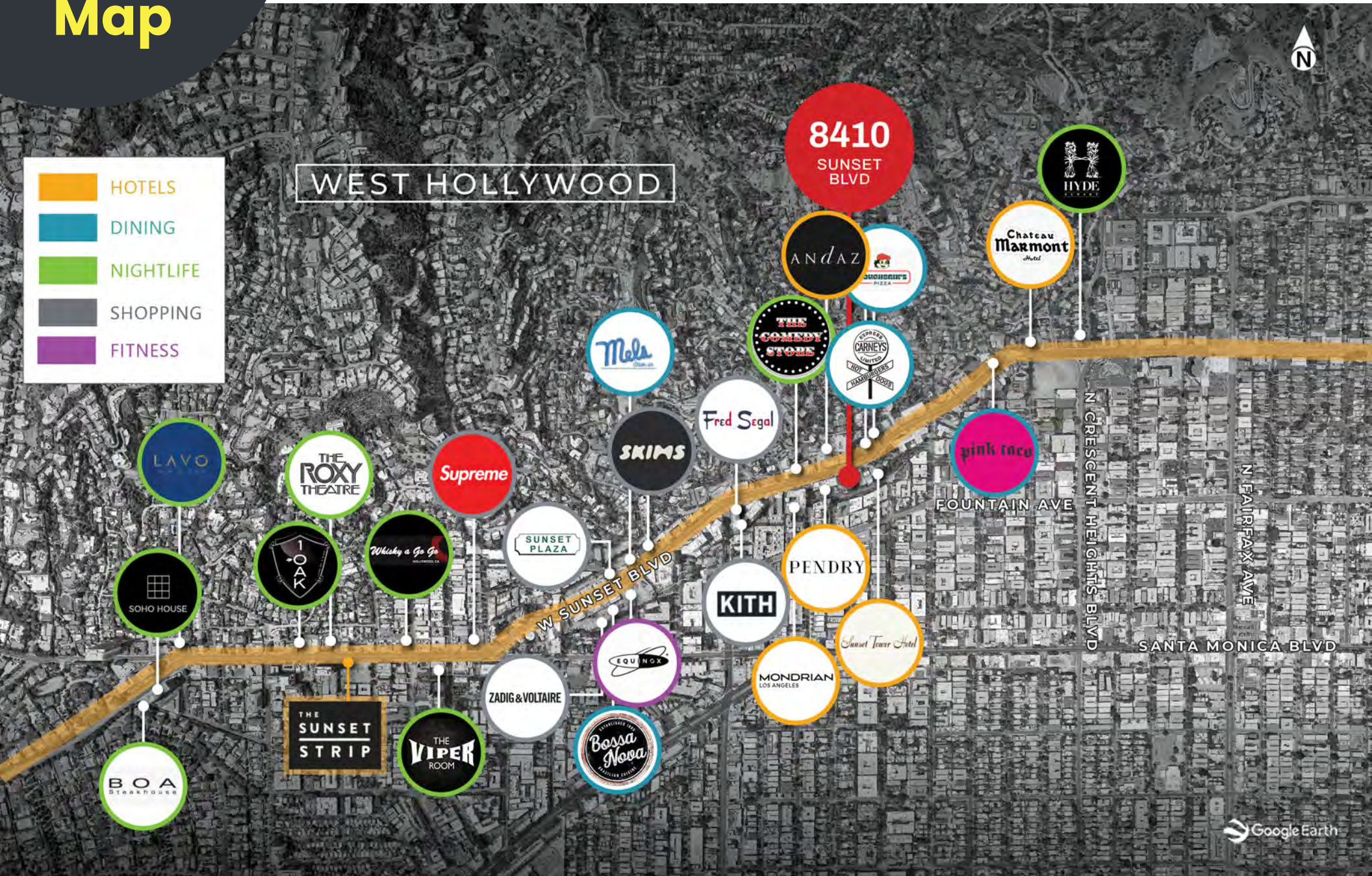
65k VPD



Approx. 451
Pedestrians
per day

Retail Map

- HOTELS
- DINING
- NIGHTLIFE
- SHOPPING
- FITNESS



Contact Info

JARED SWEDELSON

Vice President
d: 818-742-1632
m: 818-644-7597
jswedelson@naicapital.com
Cal DRE Lic #02105146

NAI CAPITAL - WEST LOS ANGELES

11835 W. Olympic Blvd., Suite 700E
Los Angeles, CA 90064
d: 310-806-6100
f: 310-806-6101
www.naicapital.com



No warranty, express or implied, is made as to the accuracy of the information contained herein. This information is submitted subject to errors, omissions, change of price, rental or other conditions, withdrawal without notice, and is subject to any special listing conditions imposed by our principals. Cooperating brokers, buyers, tenants and other parties who receive this document should not rely on it, but should use it as a starting point of analysis, and should independently confirm the accuracy of the information contained herein through a due diligence review of the books, records, files and documents that constitute reliable sources of the information described herein. NAI Capital Cal DRE #02130474

NAI Capital
COMMERCIAL REAL ESTATE SERVICES, WORLDWIDE