

# 2ND GEN RESTAURANT

4237 N 5TH STREET HWY, TEMPLE, PA

2,700 SF  
FOR LEASE

▶ DRONE VIDEO



# FACTS & DEMOGRAPHICS

4237 N 5TH STREET HWY, TEMPLE, PA



## FACTS

- Space Size: 2,700 SF
- 2020 Construction
- Move-In Ready
- JOIN: Chick Fil-A, Panera Bread, Visions Credit Union
- Across from Target and Giant
- Parking: 162 Spaces
- 20,764 VPD
- Year Built: 2020
- Lot Size: 3.19 Acres

## DEMOGRAPHICS

POPULATION	1-MILE	3-MILE	5-MILE
2023 Population	8,602	39,670	150,824
2028 Population Projection	8,798	40,641	154,636
Change (%)	0.5%	0.5%	0.5%

HOUSEHOLDS	1-MILE	3-MILE	5-MILE
2023 Households	3,520	15,037	54,703
2028 Households Projection	3,600	15,425	56,179

HOUSEHOLD INCOME	1-MILE	3-MILE	5-MILE
2023 Average HH Income	\$71,709	\$76,265	\$67,057

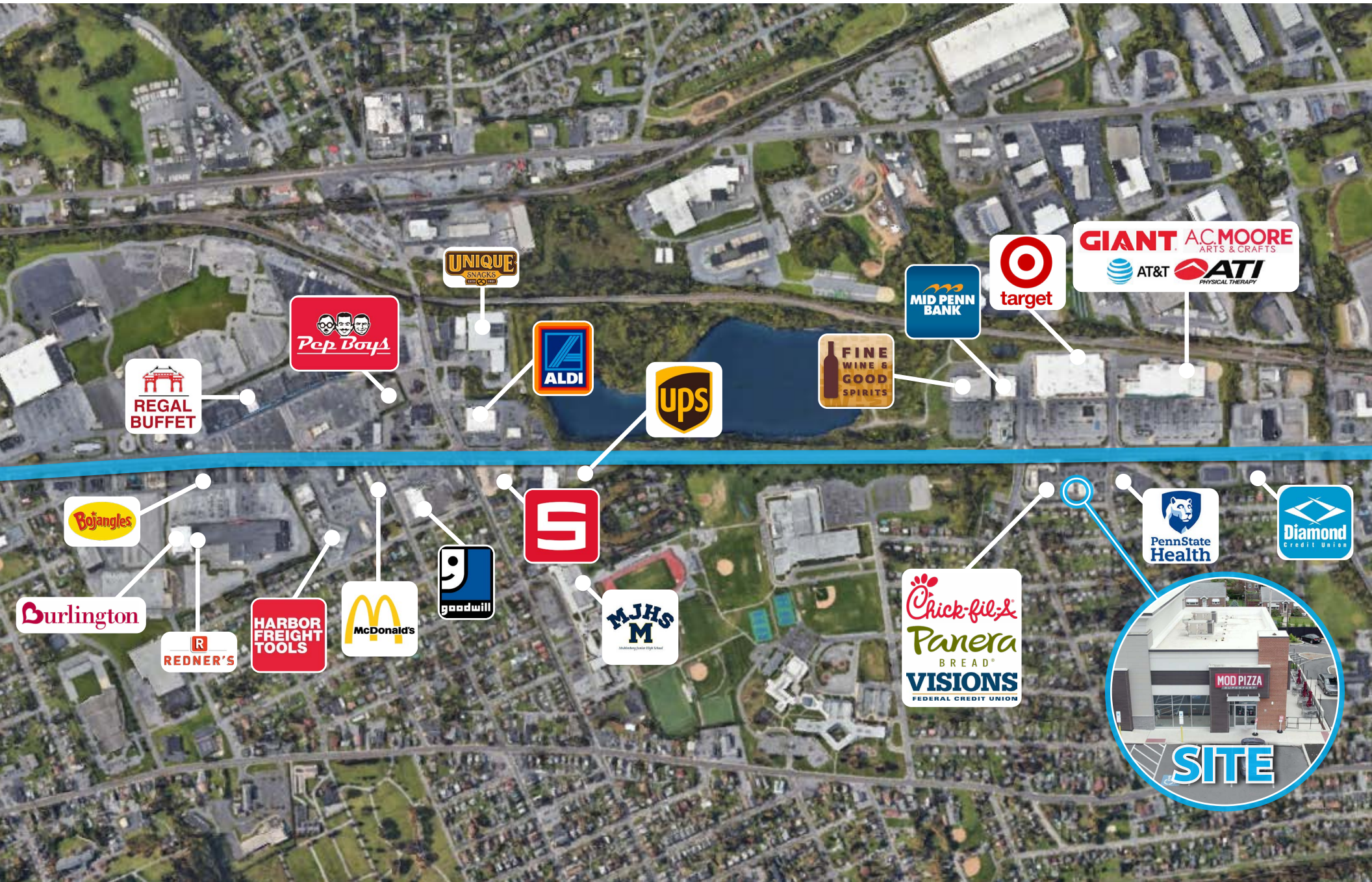
# CLOSE-IN AERIAL

4237 N 5TH STREET HWY, TEMPLE, PA



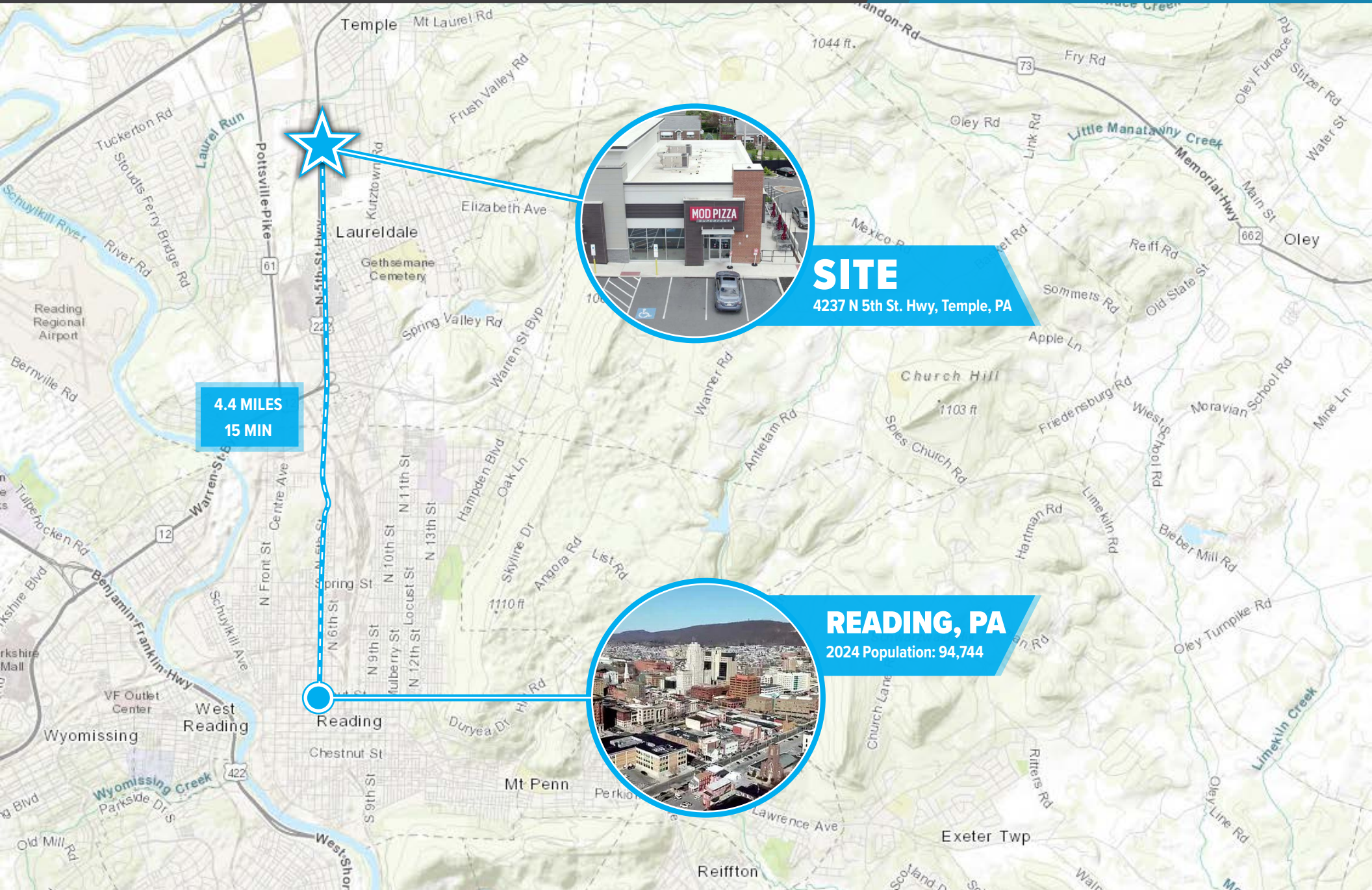
# MARKET AERIAL

4237 N 5TH STREET HWY, TEMPLE, PA



# CLOSE-IN AERIAL

4237 N 5TH STREET HWY, TEMPLE, PA



4.4 MILES  
15 MIN



**SITE**  
4237 N 5th St. Hwy, Temple, PA



**READING, PA**  
2024 Population: 94,744

# DRONE

4237 N 5TH STREET HWY, TEMPLE, PA





**FOR MORE INFORMATION CONTACT:  
STEVE GARTHWAITE, VP**

215.390.4549 | [STEVE@BENNETTREALTYLLC.COM](mailto:STEVE@BENNETTREALTYLLC.COM)



**OR CONTACT:**

**TYLER BENNETT, CEO / FOUNDER**

732.837.4153 | [TYLER@BENNETTREALTYLLC.COM](mailto:TYLER@BENNETTREALTYLLC.COM)



**BENNETT REALTY & DEVELOPMENT**  
LICENSED REAL ESTATE BROKERS  
NJ, NY, CT, PA

**NEW JERSEY**  
51 E. MAIN STREET  
HOLMDEL, NJ 07733

PH 732.837.4060  
FAX 732.963.2433  
W [BENNETTREALTYLLC.COM](http://BENNETTREALTYLLC.COM)

Although all information regarding property for sale, rental or financing is from sources deemed reliable such information has not been verified and no express representation is made nor is any to be implied as to the accuracy thereof, and it is submitted subject to errors, omissions, change of price, rental or other conditions, prior sale, lease or financing, or withdrawal with out notice.