

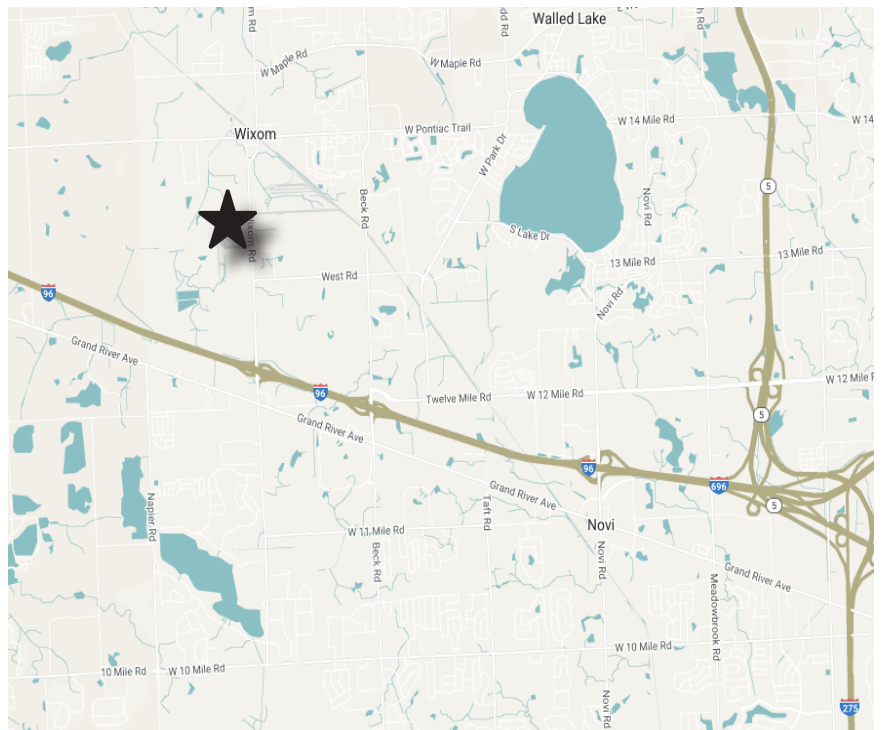
**FOR LEASE**

**49716 Martin Drive  
Wixom, MI 48393**



### **SPACE HIGHLIGHTS**

- 4,500 SF available (including 2,250 SF of office)
- 7 private offices
- 1 - 12 x 14 grade level door
- 18' ceiling clearance
- Ample parking
- Close proximity to I-96
- Next to Wixom Assembly Park
- Lease rate: \$8.95/SF Gross



### **CONTACT INFORMATION**

**STEVE KOZAK**  
DIRECTOR  
+1 248 505 1676  
steve.kozak@cushwake.com

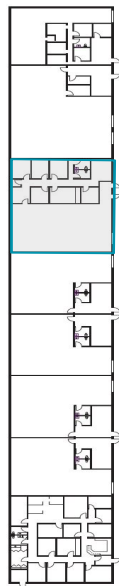
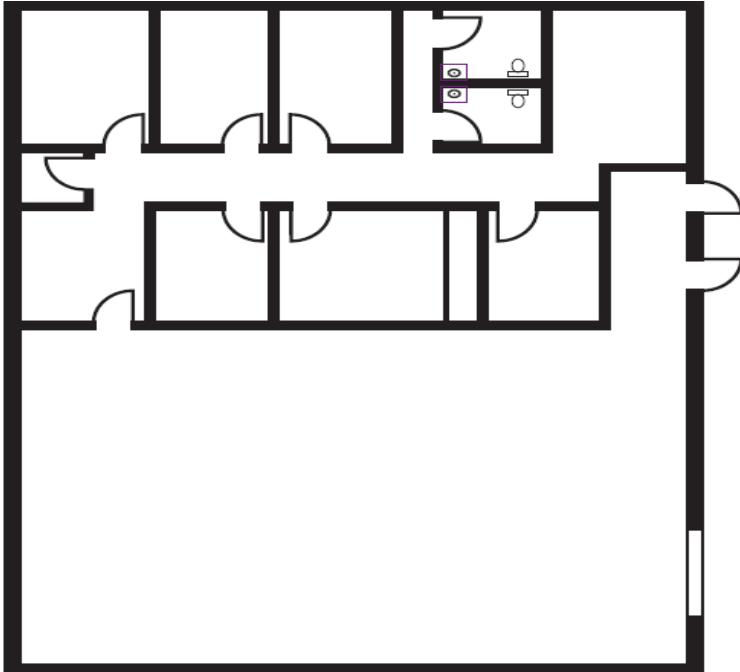
**CONNER SALSBERY**  
DIRECTOR  
+1 248 981 3678  
conner.salsberry@cushwake.com

**FOR LEASE**

**49716 Martin Drive  
Wixom, MI 48393**



## FLOORPLAN



## PROPERTY INFORMATION

Address	49668-49732 Martin Drive Wixom, MI 48393
Total Building Area	28,080 SF
Office Area	2,250 SF
Industrial Area	2,250 SF
Primary Use	Warehouse/Flex
Property Class	C
Year Built/ Renovated	1978
Stories	1
Roof	Standing Metal Seam
Total Acreage	1.74 AC
Zoning	M1 - Light Industrial
Construction	Masonry
Outside Storage	N/A
Ceiling Clearance	18'
Industrial Area HVAC	Radiant/ Forced Heat
Industrial Area Lighting	LED
Electric	3 Phase
Floors	6"
Fire Suppression	No
Cranes	No
Rail Served	No

## CONTACT INFORMATION

**STEVE KOZAK**

DIRECTOR

+1 248 505 1676

steve.kozak@cushwake.com

**CONNER SALSBERY**

DIRECTOR

+1 248 981 3678

conner.salsberry@cushwake.com



**FOR LEASE**

**49716 Martin Drive  
Wixom, MI 48393**



**CUSHMAN &  
WAKEFIELD**

**PROPERTY AERIAL**



**CONTACT INFORMATION**

**STEVE KOZAK**

DIRECTOR

+1 248 505 1676

steve.kozak@cushwake.com

**CONNER SALSBERY**

DIRECTOR

+1 248 981 3678

conner.salsberry@cushwake.com