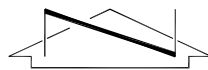


VICINITY MAP
SCALE: 1" = 2000'



THE SHOPS AT MaBe, A CONDOMINIUM, REPLAT A

5920 EAST MAIN STREET
A REPLAT OF THE SHOPS AT MaBe, A CONDOMINIUM
SITUATED IN THE NORTHEAST QUARTER OF THE NORTHEAST
QUARTER (NE1/4 NE1/4) OF SECTION 31, T30N, R12W, N.M.P.M.
FARMINGTON, SAN JUAN COUNTY, NEW MEXICO

STATEMENT OF OWNERSHIP AND DECLARATION OF THE
SHOPS AT MaBe CONDOMINIUMS

KNOW ALL MEN BY THESE PRESENTS:

That the undersigned being sole owners and proprietors of the above described land have caused the same to be known as The Shops at MaBe, A Condominium and subject the same to the declaration of The Shops at MaBe, A Condominium as filed For record in Book I477 Page 464 on June 19, 2008, and an amendment to the declaration of The Shops at MaBe, A Condominium as filed for record in Book I480 Page II60 on August 11, 2008 in the office of the Clerk of San Juan County, New Mexico, and as from time to time amended hereunder.

In witness hereof declarants have caused these presents to be executed by it's owners this _____ day of _____.

DECLARANT

MaBe Resources, LLC, a New Mexico Limited Liability Company

By: _____, Managing Member
Elisabeth Bayless McCord

State of New Mexico)
County of San Juan)

The foregoing instrument was acknowledged before me on this _____ day of _____, _____ by Elisabeth Bayless McCord Managing Member of MaBe Resources, LLC, a New Mexico Limited Liability Company, on behalf of the company.

My commision expires: _____
Notary public

PRIVATE RIGHT OF WAY, ACCESS, DRAINAGE, AND UTILITY
EASEMENT DEDICATION

KNOW ALL MEN THE FOLLOWING:

That the said condominiums, as shown on this plat, is with the consent and in accordance with the desires of said owners, and the private streets shown hereon are reserved for use as access to and from the lots and lands within said condominiums by the owners of the units within said condominiums, others, as provided in the Declaration of The Shops at MaBe, A Condominium and by public utility and emergency service providers for the purpose of providing such services. Said private streets shall be maintained by the homeowners association as set forth in said declaration.

CERTIFICATION

I, GEORGE T. WALTERS, A NEW MEXICO PROFESSIONAL SURVEYOR CERTIFY THAT I CONDUCTED AND AM RESPONSIBLE FOR THIS BOUNDARY SURVEY PLAT, THAT THIS SURVEY IS TRUE AND CORRECT TO THE BEST OF MY KNOWLEDGE AND BELIEF, AND THAT THIS BOUNDARY SURVEY PLAT MEETS THE MINIMUM STANDARDS FOR SURVEYING IN NEW MEXICO. I FURTHER CERTIFY THAT THIS SURVEY IS NOT A DIVISION OF LAND AS DEFINED IN THE NEW MEXICO SUBDIVISION ACT.

GEORGE T. WALTERS
PROFESSIONAL LAND SURVEYOR No. 6159
STATE OF NEW MEXICO

DATE

SUITE A

A tract of land situated in the Northeast Quarter of the Northeast Quarter (NE1/4 NE1/4) of Section 31, T30N, R12W, N.M.P.M., Farmington, San Juan County, New Mexico, being more particularly described as follows:

COMMENCING at the most easterly corner of Lot 2C of Villa View Plaza, Replat "C" as filed for record in Book I474, Page 984, on 4-30/2008, a point on the northern right-of-way of U.S. Highway 516 (East Main Street;

- THENCE: ALONG the southern boundary of said Lot 2C and the northern right-of-way and S58°34'01"W for a distance of 180.53 feet;
- THENCE: LEAVING said southern boundary and the northern right-of-way and N31°18'16"W for a distance of 205.58 feet to the True Point of Beginning of Suite A;
- THENCE: CONTINUING N31°18'16"W for a distance of 64.00 feet;
- THENCE: N58°41'44"E for a distance of 55.42 feet;
- THENCE: S31°18'16"E for a distance of 8.50 feet;
- THENCE: S58°41'44"W for a distance of 0.92 feet to the centerline of a common wall between Suite A and Suite B;
- THENCE: ALONG said common wall centerline and S31°18'16"E for a distance of 50.00 feet;
- THENCE: LEAVING said common wall centerline and N58°41'44"E for a distance of 0.92 feet;
- THENCE: S31°18'16"E for a distance of 5.50 feet;
- THENCE: S58°41'44"W for a distance of 55.42 feet and back to the point of beginning.
Said tract of land contains 3,501 square feet, more or less.

SUITE B

A tract of land situated in the Northeast Quarter of the Northeast Quarter (NE1/4 NE1/4) of Section 31, T30N, R12W, N.M.P.M., Farmington, San Juan County, New Mexico, being more particularly described as follows:

COMMENCING at the most southerly corner of Suite B of The Shops at MaBe, a Condominium, as filed for record in Book I480, Page 369, on 08/14/2008 being a point on the northern boundary of Suite C of said The Shops at MaBe, A Condominium and the True Point of Beginning;

- THENCE: ALONG the southern boundary of said Suite B and N31°18'16"W for a distance of 24.46 feet;
- THENCE: LEAVING said southern boundary and N58°41'44"E for a distance of 0.25 feet to the centerline of a common wall between Suite B1 and Suite B2;
- THENCE: ALONG said common wall centerline and N31°18'16"W for a distance of 50.00 feet to a point on the centerline of a common wall between Suite B1 and the Common Storage area;
- THENCE: ALONG said common wall centerline and N58°41'44"E for a distance of 25.90 feet to a point on the northern boundary of above said Suite B;
- THENCE: ALONG said northern boundary and S76°18'16"E for a distance of 33.73 feet;
- THENCE: CONTINUING along said northern boundary and S31°18'16"E for a distance of 40.46 feet to the most easterly point of said Suite B and a point on the northern boundary of above said Suite C;
- THENCE: ALONG the northern boundary of said Suite C and the southern boundary of said Suite B and S58°41'44"W for a distance of 50.00 feet and back to the Point of Beginning.
Said tract of land contains 2,921 square feet, more or less.

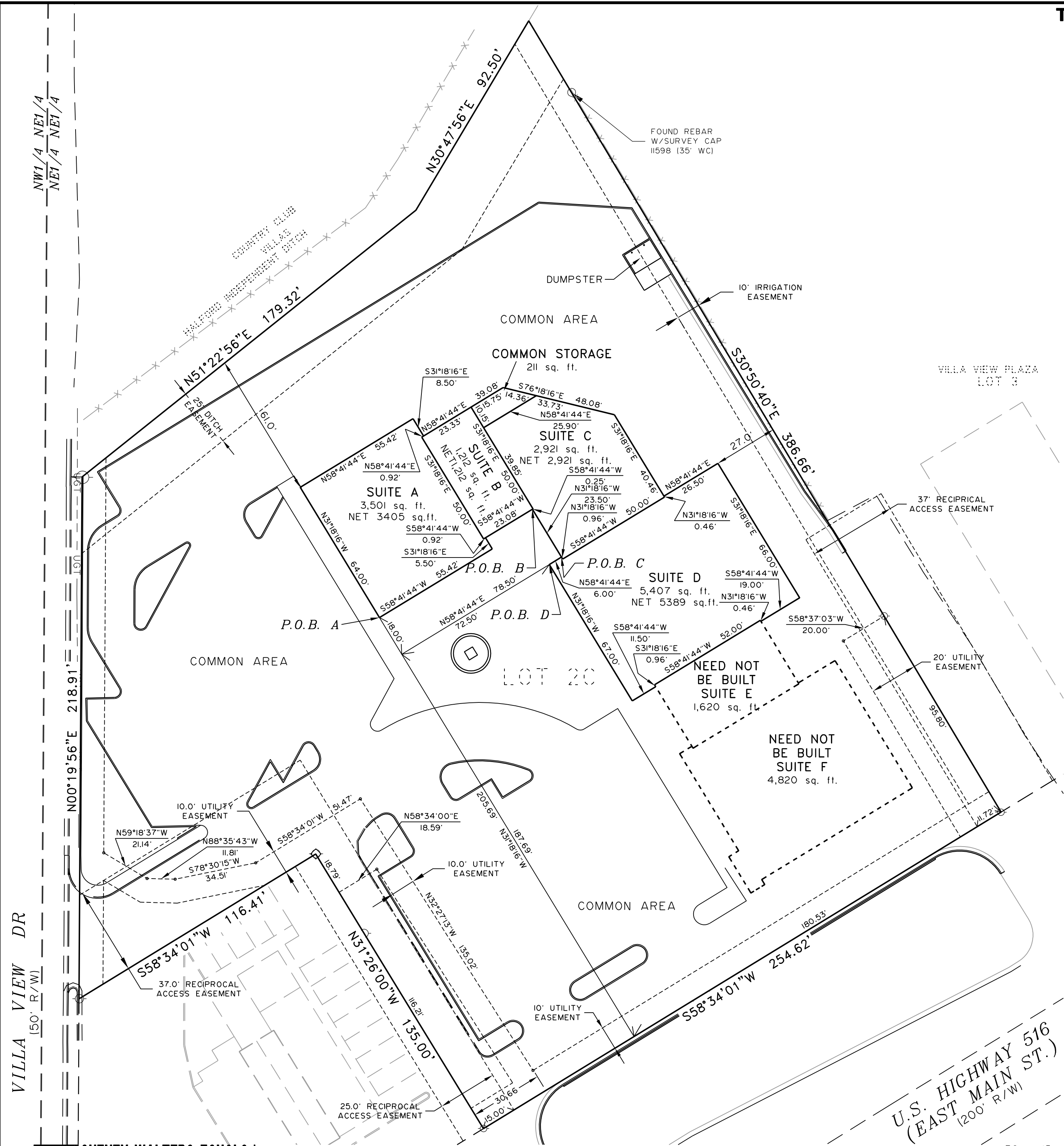
COMMON STORAGE

A tract of land situated in the Northeast Quarter of the Northeast Quarter (NE1/4 NE1/4) of Section 31, T30N, R12W, N.M.P.M., Farmington, San Juan County, New Mexico, being more particularly described as follows:

COMMENCING at the most southerly corner of Suite B of The Shops at MaBe, a Condominium, as filed for record in Book I480, Page 369, on 08/14/2008 being a point on the northern boundary of Suite C of said The Shops at MaBe, A Condominium;

- THENCE: ALONG the southern boundary of said Suite B and N31°18'16"W for a distance of 24.46 feet;
- THENCE: LEAVING said southern boundary and N58°41'44"E for a distance of 0.25 feet to the centerline of a common wall between Suite B1 and Suite B2;
- THENCE: ALONG said common wall centerline and N31°18'16"W for a distance of 39.85 feet to a point on the centerline of a common wall between Suite B1 and the Common Storage said point being the True Point of Beginning;
- THENCE: ALONG said common wall centerline and N31°18'16"W for a distance of 10.15 feet to a point on the northern boundary of above said Suite B;
- THENCE: ALONG said northern boundary and N58°41'44"E for a distance of 15.75 feet;
- THENCE: CONTINUING along said northern boundary and S76°18'16"E for a distance of 14.36 feet to a point on the centerline of a common wall between Suite B1 and the Common Storage;
- THENCE: LEAVING said northern boundary and along said centerline and S58°41'44"W for a distance of 25.90 feet and back to the Point of Beginning.
Said tract of land contains 211 square feet, more or less.

THE SHOPS AT MaBe, A CONDOMINIUM, REPLAT A



SUITE C

A tract of land situated in the Northeast Quarter of the Northeast Quarter (NE1/4 NE1/4) of Section 31, T30N, R12W, N.M.P.M., Farmington, San Juan County, New Mexico, being more particularly described as follows:

COMMENCING at the most southerly corner of Suite B of The Shops at MaBe, a Condominium, as filed for record in Book 1480, Page 369, on 08/14/2008 being a point on the northern boundary of Suite C of said The Shops at MaBe, A Condominium;

- THENCE: ALONG the southern boundary of said Suite B and N31°18'16" W for a distance of 24.46 feet to the True Point of Beginning;
 - THENCE: ALONG said southern boundary the following courses and distances and S58°41'44" W for a distance of 24.00 feet;
 - THENCE: N31°18'16" W for a distance of 50.00 feet to the most westerly point of said Suite B;
 - THENCE: ALONG the northern boundary of said Suite B and N58°41'44" E for a distance of 24.25 feet to a point on the centerline of a common wall between Suite B and the Common Storage;
 - THENCE: ALONG said common wall centerline and S31°18'16" E for a distance of 50.00 feet;
 - THENCE: LEAVING said centerline and S58°41'44" W for a distance of 0.25 feet and back to the Point of Beginning.
- Said tract of land contains 1,212 square feet, more or less.

SUITE D

A tract of land situated in the Northeast Quarter of the Northeast Quarter (NE1/4 NE1/4) of Section 31, T30N, R12W, N.M.P.M., Farmington, San Juan County, New Mexico, being more particularly described as follows:

COMMENCING at the most easterly corner of Lot 2C of Villa View Plaza, Replat "C" as filed for record in Book 1474, Page 984, on 4-30/2008, a point on the northern right-of-way of U.S. Highway 516 (East Main Street);

- THENCE: ALONG the southern boundary of said Lot 2C and the northern right-of-way and S58°34'01" W for a distance of 180.53 feet;
 - THENCE: LEAVING said southern boundary and the northern right-of-way and N31°18'16" W for a distance of 187.68 feet;
 - THENCE: N58°41'44" E for a distance of 72.50 feet to the True Point of Beginning of Suite C;
 - THENCE: CONTINUING N58°41'44" E for a distance of 6.00 feet;
 - THENCE: S31°18'16" E for a distance of 0.96 feet to the centerline of a common wall between Suite B and Suite C;
 - THENCE: ALONG said common wall centerline and N58°41'44" E for a distance of 50.00 feet;
 - THENCE: LEAVING said common wall centerline and N31°18'16" W for a distance of 0.46 feet;
 - THENCE: N58°41'44" E for a distance of 26.50 feet;
 - THENCE: S31°18'16" E for a distance of 66.00 feet;
 - THENCE: S58°41'44" W for a distance of 19.00 feet;
 - THENCE: N31°18'16" W for a distance of 0.46 feet to the centerline of a common wall between Suite C and Suite D;
 - THENCE: ALONG said common wall centerline and S58°41'44" W for a distance of 52.00 feet;
 - THENCE: LEAVING said common wall centerline and S31°18'16" E for a distance of 0.96 feet;
 - THENCE: S58°41'44" W for a distance of 11.50 feet;
 - THENCE: N31°18'16" W for a distance of 67.00 feet and back to the point of beginning.
- Said tract of land contains 5,407 square feet, more or less.

