

FOR SALE
+/-21.05 AC



11407 BARDSTOWN CREEK RD
LOUISVILLE, KY 40291

PRIME LAND SITE

PROPERTY HIGHLIGHTS

Excellent development potential

All utilities available

Ingress/egress off of Bardstown Road

Located near Broad Run Park and next to the new Oakland Hills Subdivision

Adjoins scenic Parklands at Floyds Fork



LOUISVILLE SKYLINE



CHURCHILL DOWNS



AERIAL MAP
+/-21.05 AC

11407 BARDSTOWN CREEK RD | LOUISVILLE, KY 40291

A DRIVING WORKFORCE

This large site has excellent Bardstown Road visibility and is located near parks, retail, and a new single-family home development making it ideal for residential development.



1,067
POPULATION
Within 1 Mile



\$140,637
AVG. HH INCOME
Within 1 Mile



327
HOUSEHOLDS
Within 1 Mile



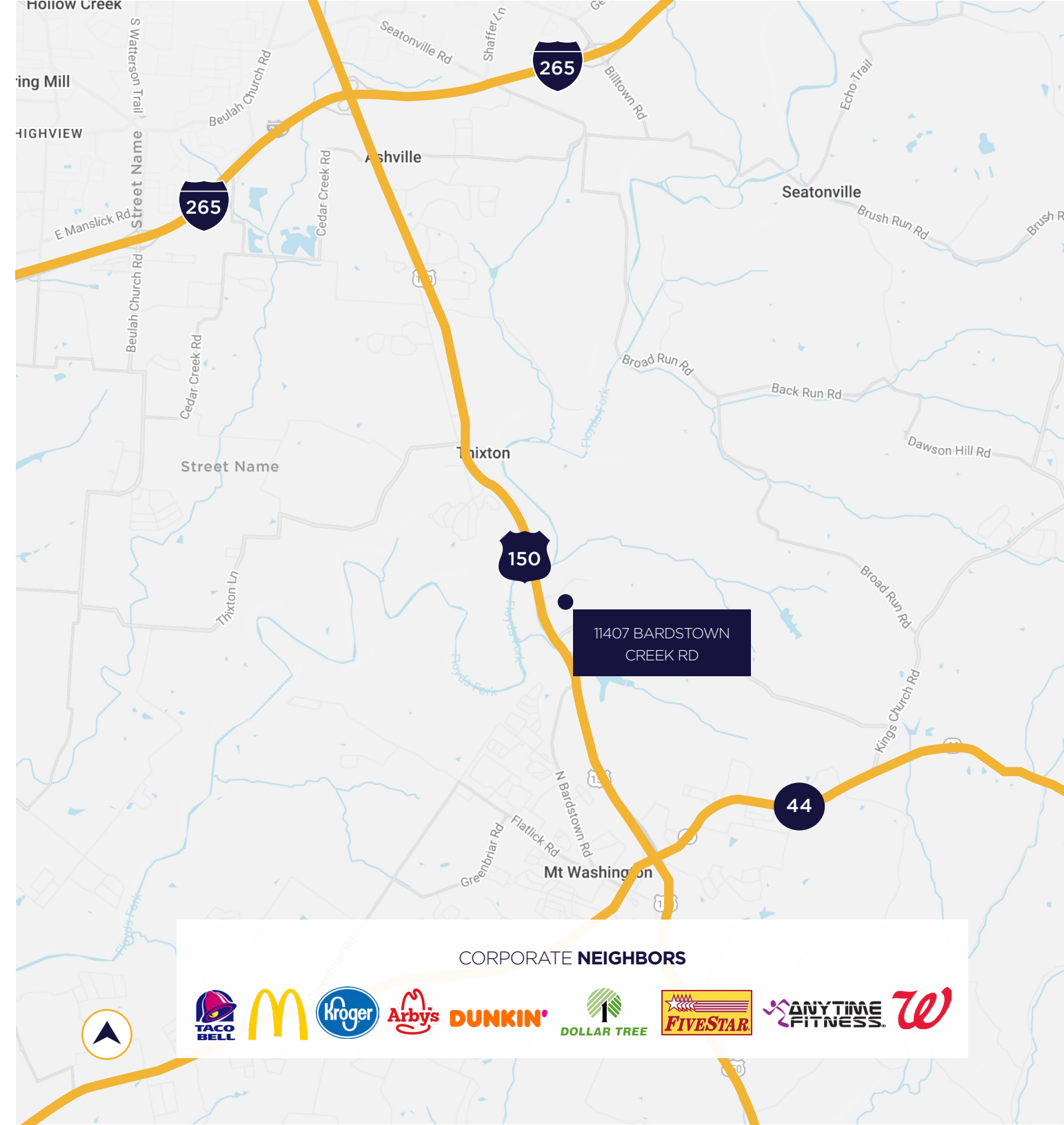
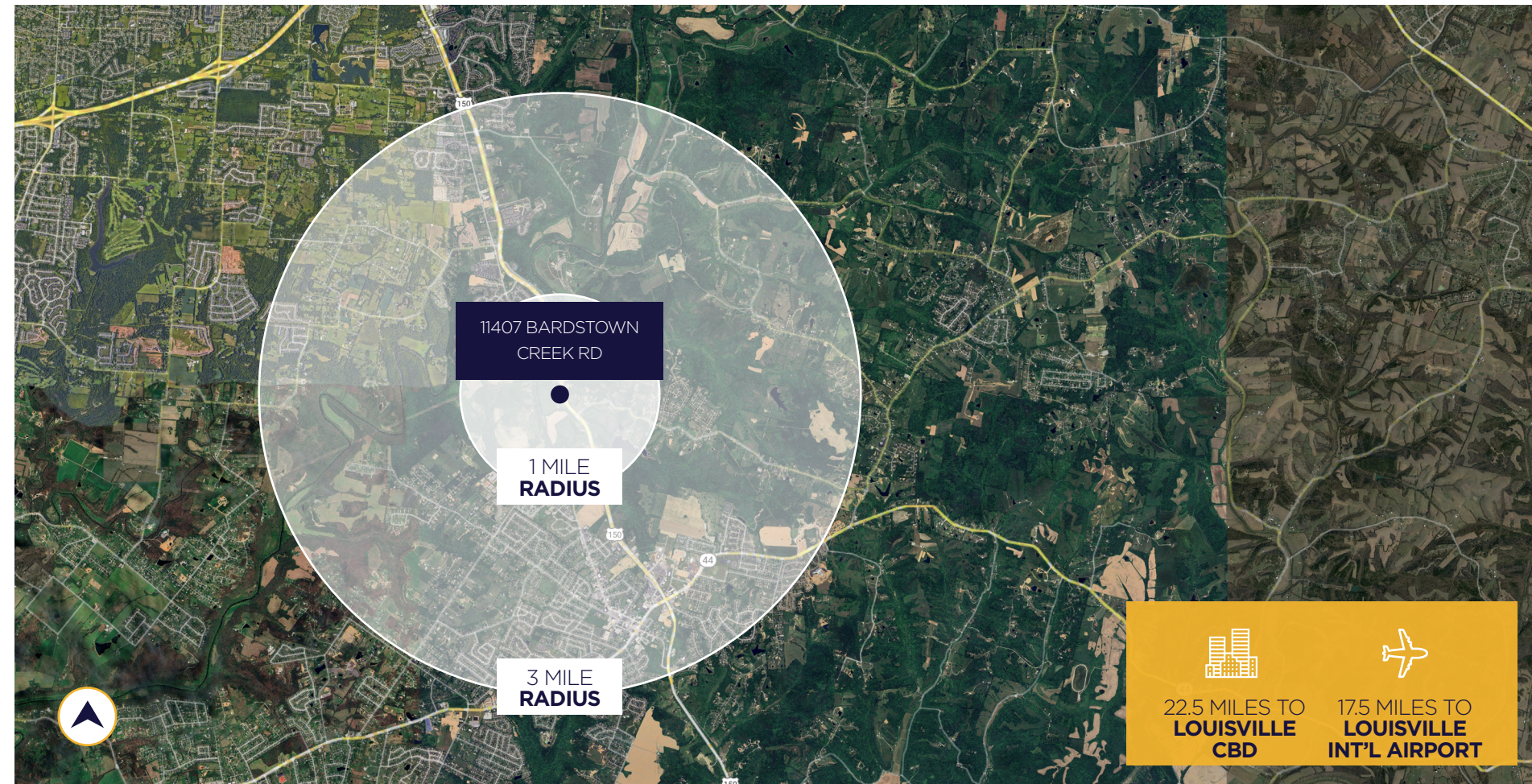
42.6
AVG. AGE
Within 1 Mile

20,786
POPULATION
Within 3 Miles

\$123,484
AVG. HH INCOME
Within 3 Miles

8,275
HOUSEHOLDS
Within 3 Miles

41.6
AVG. AGE
Within 3 Miles



0.5 MILES
TO BROAD RUN PARK

4.6 MILES
TO I-265

2.4 MILES
TO HWY 44

16.9 MILES
TO UPS WORLDPORT

15.7 MILES
TO FORD ASSEMBLY PLANT

17.5 MILES
TO LOUISVILLE INT'L AIRPORT

CONTACT INFORMATION

CRAIG COLLINS

ccollins@commercialkentucky.com

+1 502 719 3221

AUSTIN ENGLISH, MBA

aenglish@commercialkentucky.com

+1 502 719 3258



©2024 Cushman & Wakefield. All rights reserved. The information contained in this communication is strictly confidential. This information has been obtained from sources believed to be reliable but has not been verified. NO WARRANTY OR REPRESENTATION, EXPRESS OR IMPLIED, IS MADE AS TO THE CONDITION OF THE PROPERTY (OR PROPERTIES) REFERENCED HEREIN OR AS TO THE ACCURACY OR COMPLETENESS OF THE INFORMATION CONTAINED HEREIN, AND SAME IS SUBMITTED SUBJECT TO ERRORS, OMISSIONS, CHANGE OF PRICE, RENTAL OR OTHER CONDITIONS, WITHDRAWAL WITHOUT NOTICE, AND TO ANY SPECIAL LISTING CONDITIONS IMPOSED BY THE PROPERTY OWNER(S). ANY PROJECTIONS, OPINIONS OR ESTIMATES ARE SUBJECT TO UNCERTAINTY AND DO NOT SIGNIFY CURRENT OR FUTURE PROPERTY PERFORMANCE.

Independently Owned & Operated / A Member of the Cushman & Wakefield Alliance