

Offering Summary

Lease Rate:	\$1,500.00 per month (MG)
Building Size:	6,500 SF
Available SF:	1,250 SF
Lot Size:	31,485 SF
Zoning:	C-3

Location Overview

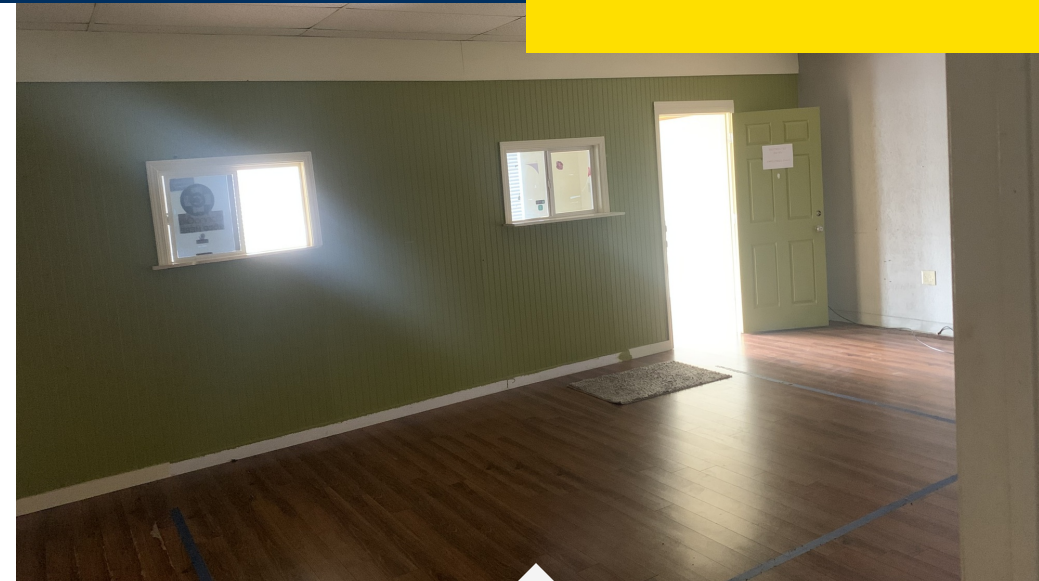
Situated at the intersection of Pines Road and 70th Street, just 0.68 miles south of Interstate 20 and 1.04 miles west of LA 3132 Inner loop. The available space comprises a 1,250 square foot retail end cap suite, complete with a drive-through window for added versatility.

Sealy Real Estate Services, LLC
333 Texas Street, Suite 1050
Shreveport, LA 71101
318.222.8700
www.sealynet.com

Keaton Holley
Direct 318.698.3122
Mobile 318.572.7775
keatonh@sealynet.com

Grant Smith
Direct 318.698.1116
Mobile 318.470.3676
GrantS@sealynet.com

All information set forth in this brochure has been obtained from the owner, personal observation, or other reliable sources. Sealy Real Estate Services, LLC does not guarantee the accuracy of this information and makes no representations or warranties, expressed or implied, in this brochure. Information contained herein is subject to change without notice.



Building Name	7005 Pines Rd
Property Type	Retail
APN	171525001001400
Number of Floors	1

The suite features one restroom and pre-installed plumbing suitable for a potential salon setup. The layout currently comprises three distinct rooms: a welcoming reception area with connecting windows to the main room, and a spacious rear section housing the drive-through window.

- Easily accessible
- Proximity to I-20 and I-220
- Drive-thru window
- Salon plumbing in place