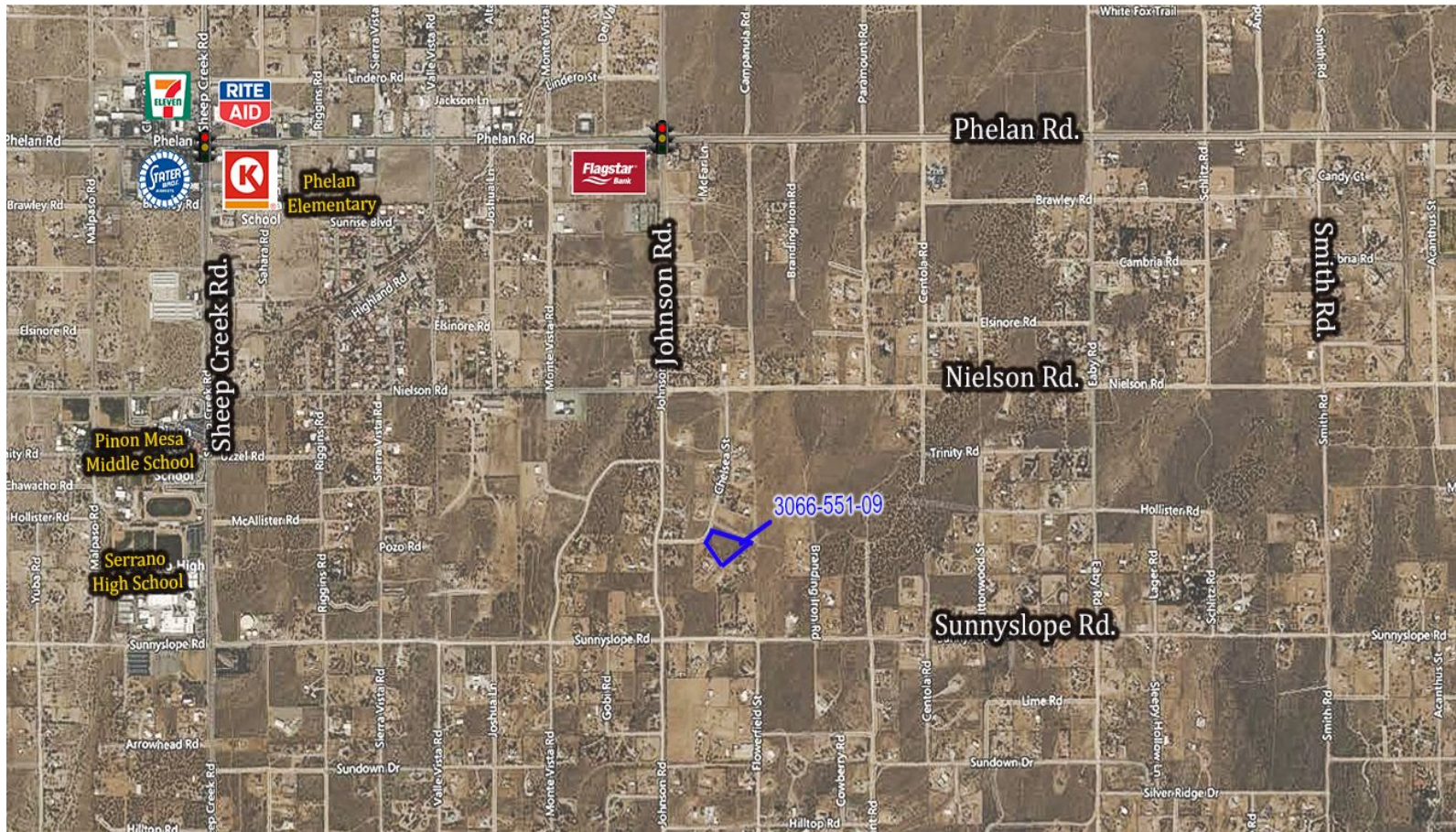


Residential Lots

Kelly Ct, Phelan, CA

For Sale



Rural Residential Lot For Sale in the beautiful rural area of Phelan, San Bernardino County, CA. Enjoy spacious parcels with plenty of room for private, quiet living in an established rural neighborhood. Views of distant mountains to the south make this a desirable place to call home. Quick access to grocery, conveniences and schools.

ROB KURTH

760.983.2591 RKurth@KurschGroup.com
BRE#01244413 Corporate BRE #01896143



KURSCH
GROUP

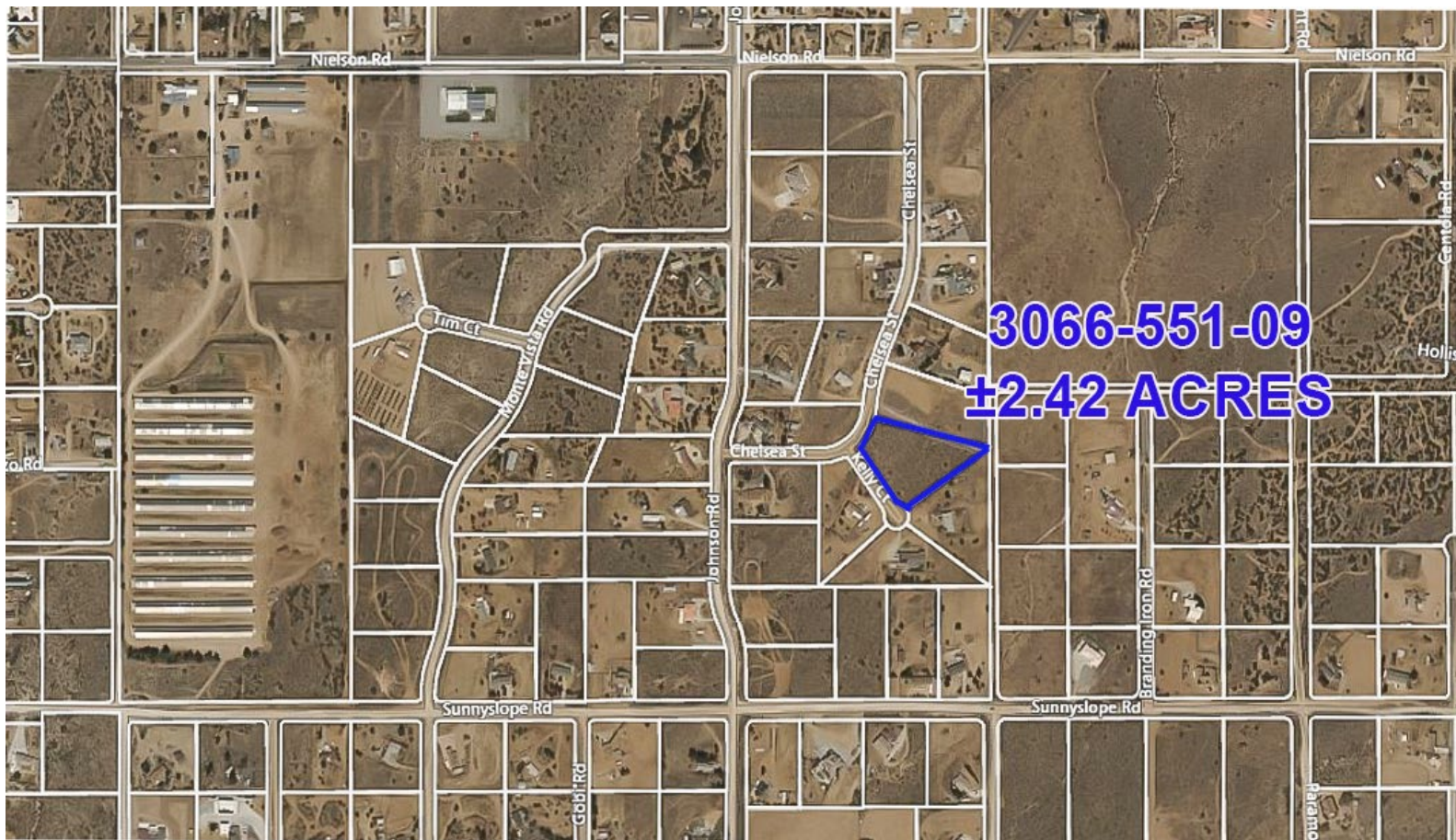
12180 Ridgecrest Rd, Suite 232, Victorville, CA 92395 - 760.983.2383
www.KurschGroup.com

This information has been secured from sources we believe to be reliable. Kursch Group, Inc. and/or agents involved, make no representations or warranties, expressed or implied, as to the accuracy of the information. All information should be verified with another outside agency, government entity or property owner as applicable.

Residential Lots

Kelly Ct., Phelan, CA

For Sale



OFFERING ±2.42 ACRES \$118,000

APN 3066-551-09 is a corner parcel within a cul-de-sac at the southeast corner of Chelsea Street and Kelly Court. Adjacent to existing homes with power established, buyer to verify all utilities.

ROB KURTH

760.983.2591 RKurth@KurschGroup.com
BRE#01244413 Corporate BRE #01896143



KURSCH
GROUP

12180 Ridgecrest Rd, Suite 232, Victorville, CA 92395 - 760.983.2383
www.KurschGroup.com

This information has been secured from sources we believe to be reliable. Kursch Group, Inc. and/or agents involved, make no representations or warranties, expressed or implied, as to the accuracy of the information. All information should be verified with another outside agency, government entity or property owner as applicable.