

41743 HAGGERTY CIRCLE
CANTON, MICHIGAN

INDUSTRIAL FOR LEASE
37,147 Square Feet Available



**SIGNATURE
ASSOCIATES**
KNOW SIGNATURE | KNOW RESULTS

HAGGERTY III CORPORATE PARK



READY FOR INTERIOR FINISHES

PROPERTY FEATURES

- (2) 37,147 square foot mirror image buildings available
- Premium new construction with corporate image in established park
- Occupancy Q1 2025
- 28' clear height
- (1) 12'x14' grade level door and (2) truckwells
- Zoned LI-R, Lt Industrial
- Quick access to I-275 and minutes to Detroit Metro Airport
- Access to numerous restaurants, retail, and hospitality locations
- Lease Rate: \$9.65 NNN



For more information, please contact:

BRAD VIERGEVER
(248) 799 3146
bviergever@signatureassociates.com

PAUL HOGE
(248) 948 0103
paulhoge@signatureassociates.com

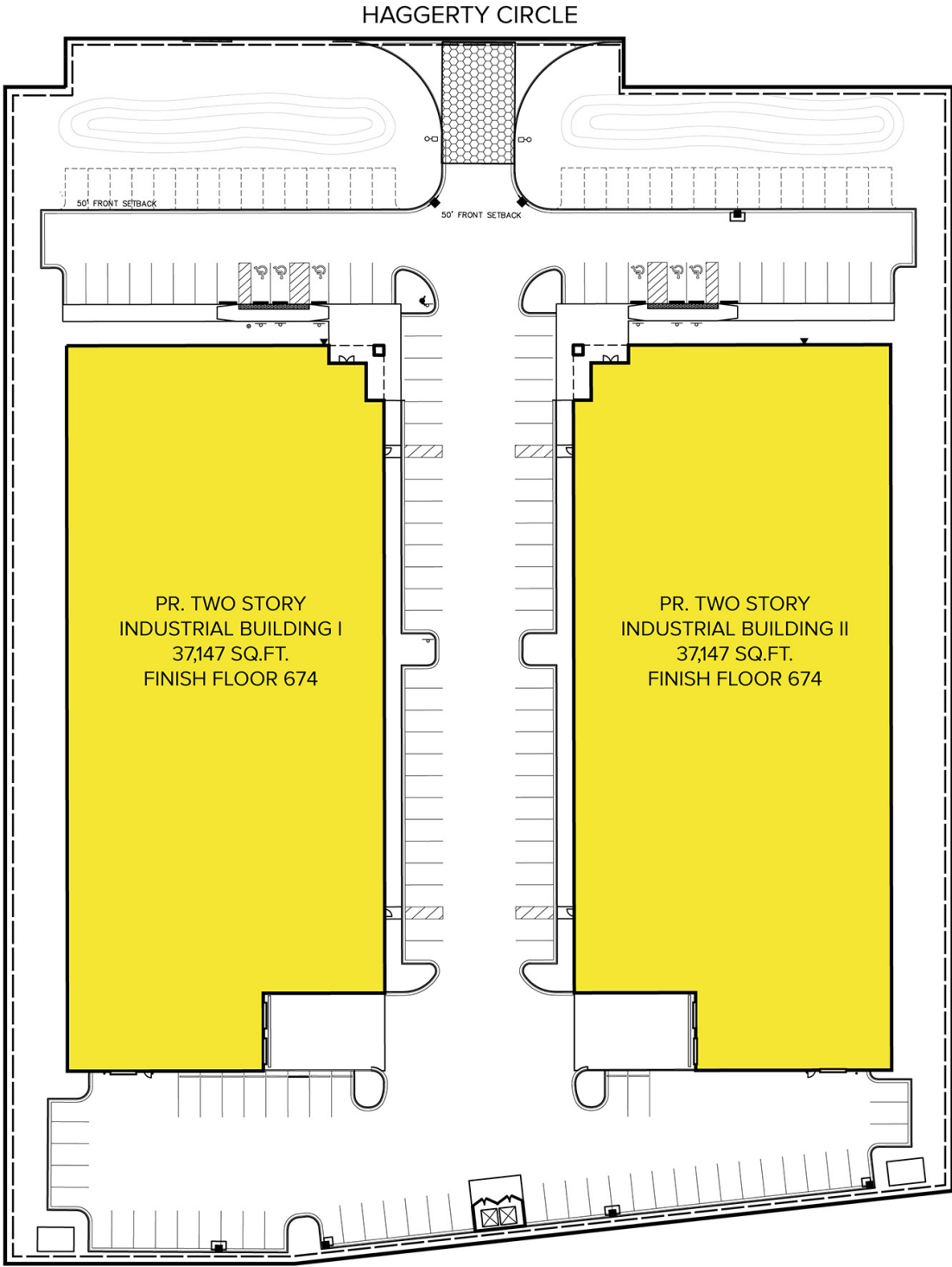
SIGNATURE ASSOCIATES
One Towne Square, Suite 1200
Southfield, MI 48076
www.signatureassociates.com

41743 Haggerty Circle – Canton, Michigan

Industrial For Lease

37,147
Square Feet
AVAILABLE

Site Plan



For more information, please contact:

BRAD VIERGEVER
(248) 799 3146
bviergever@signatureassociates.com

PAUL HOGE
(248) 948 0103
paulhoge@signatureassociates.com

SIGNATURE ASSOCIATES
One Towne Square, Suite 1200
Southfield, MI 48076
www.signatureassociates.com

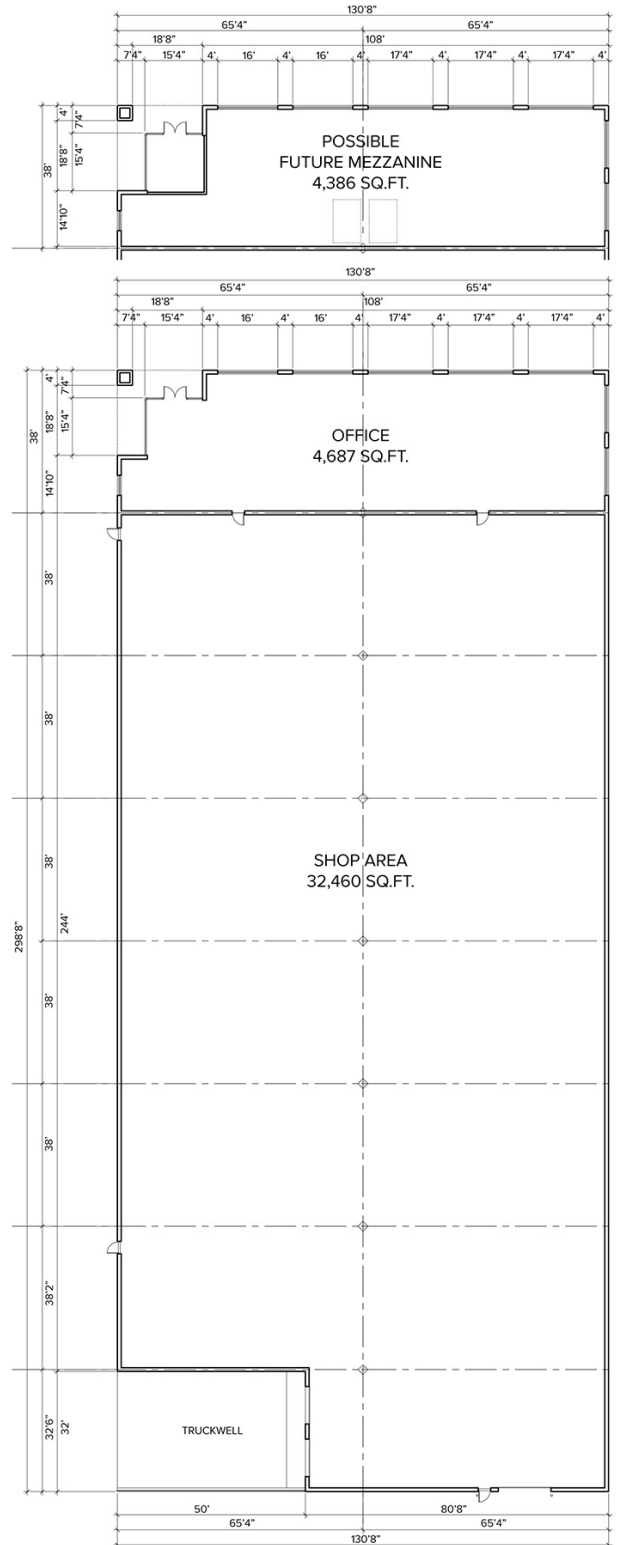
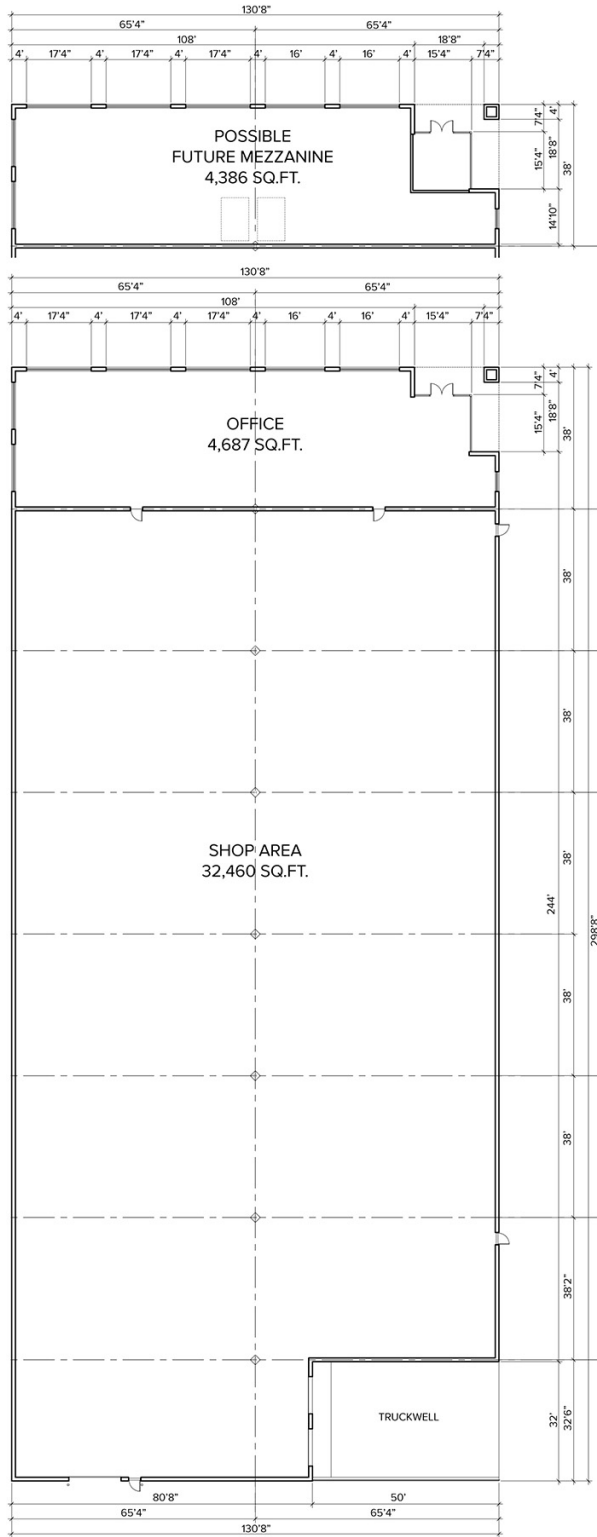
Information is subject to verification and no liability for errors or omissions is assumed. Price is subject to change and listing withdrawal.

41743 Haggerty Circle – Canton, Michigan

Industrial For Lease

37,147
Square Feet
AVAILABLE

Floor Plans – Building I & Building II



For more information, please contact:

BRAD VIERGEVER
(248) 799 3146
bviergever@signatureassociates.com

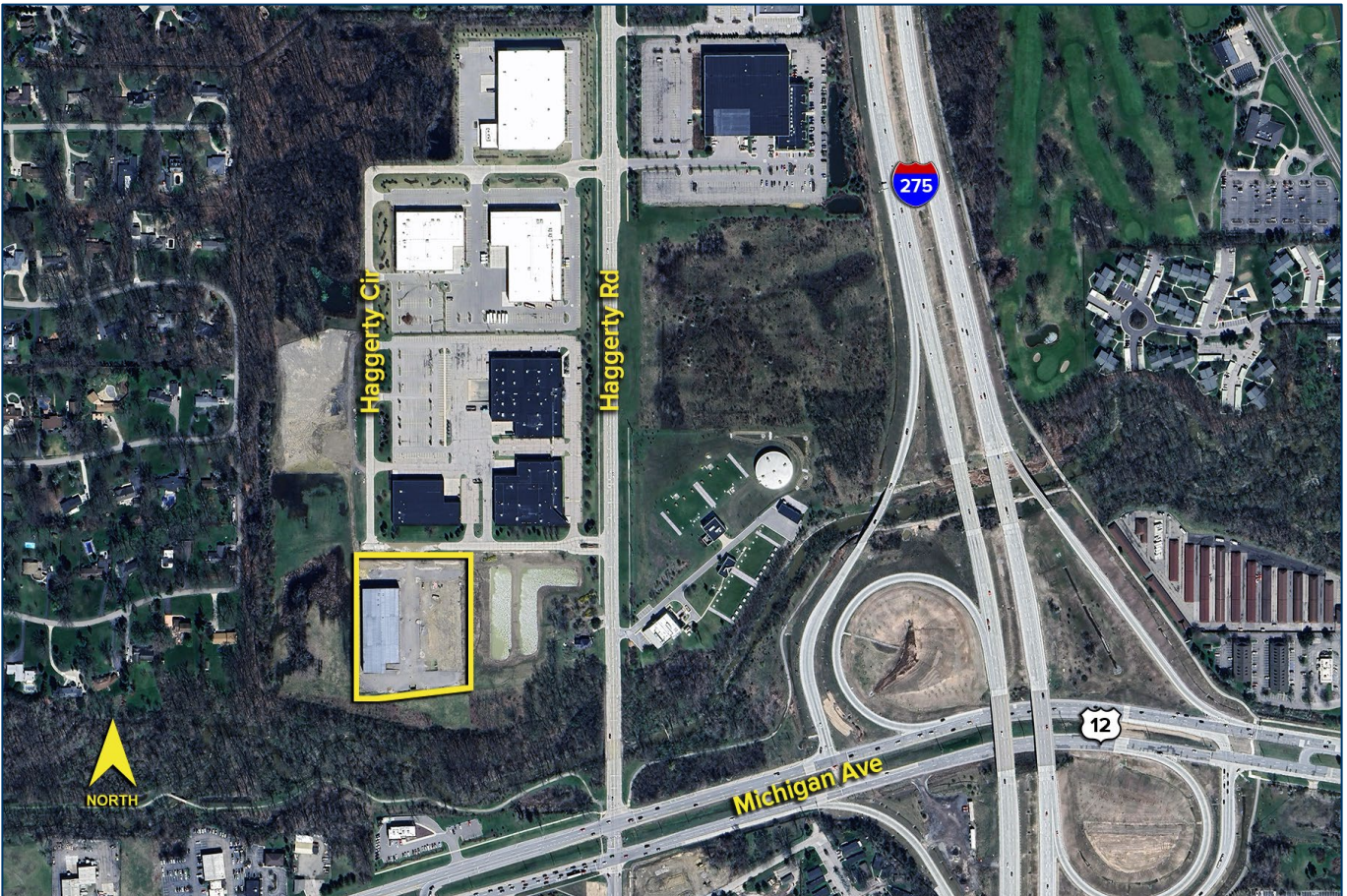
PAUL HOGE
(248) 948 0103
paulhoge@signatureassociates.com

SIGNATURE ASSOCIATES
One Towne Square, Suite 1200
Southfield, MI 48076
www.signatureassociates.com

41743 Haggerty Circle – Canton, Michigan

Industrial For Lease

37,147
Square Feet
AVAILABLE



For more information, please contact:

BRAD VIERGEVER
(248) 799 3146
bviergever@signatureassociates.com

PAUL HOGE
(248) 948 0103
paulhoge@signatureassociates.com

SIGNATURE ASSOCIATES
One Towne Square, Suite 1200
Southfield, MI 48076
www.signatureassociates.com