

OPPORTUNITY FOR

Land Development

POST ROAD

NORTH KINGSTOWN, RI



SPINNAKER GROUP, INC.

Andy Kushner

(401) 603 - 8511

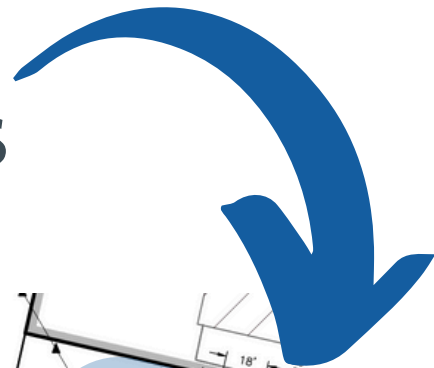
akushner@spinngroup.com

Kate McMorro

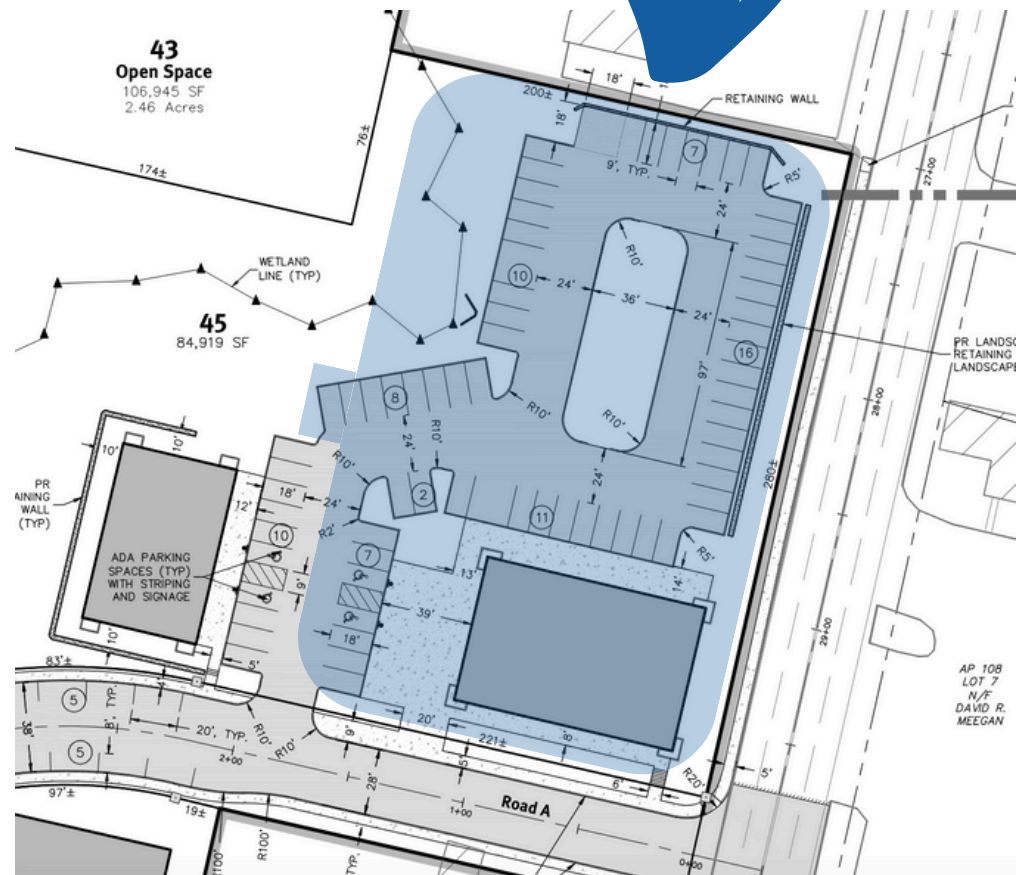
(401) 477 - 0405

kcmorrow@spinngroup.com

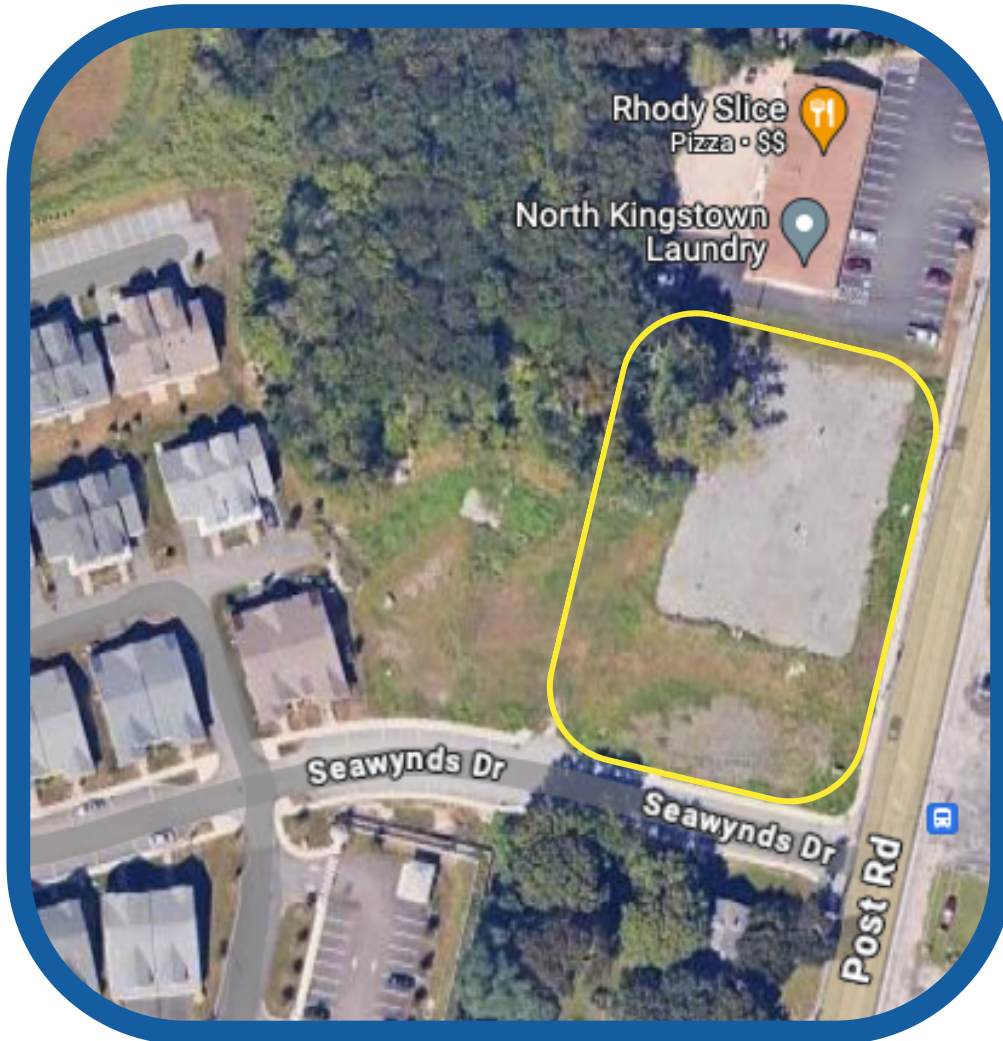
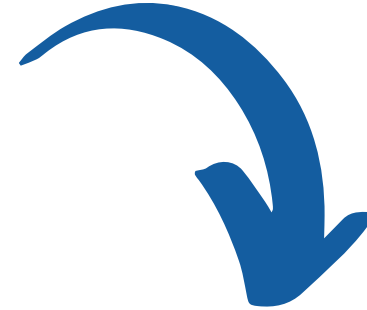
PROPERTY HIGHLIGHTS



- Land for **Sale or Lease**
- Approx. **1.2 acre** parcel
- Master plan approval for up to a **6,000 sq.ft. footprint** with the **possibility of second floor**
- City water, sewer & gas available
- Average Daily Traffic Count: **24,600**
- **55 parking spots**
 - 9.16 spots/1000 sq.ft.



ZONED FOR



- **Restaurant or Carryout Food Services**
- **Medical clinic**
- **Professional and Business Services**
 - Bank, credit union or professional offices
- **Animal hospital/Clinical veterinary services**
- **Daycare Center/Nursery School**
- **Personal Convenience Services**
 - Barbershop, hairdresser, tailor shop, home appliance repair or shoe repair
- **Retail business**
- **Educational and training center**
- **Home improvement stores**



Andy Kushner

(401) 603 - 8511

akushner@spinnagroup.com

Kate McMorro

(401) 477 - 0405

kmcmorrow@spinnagroup.com

DEMOGRAPHIC ANALYSIS

WITHIN 5 MILES OF SITE

KEY FACTS

41,087

Population

17,019

Total Households

18,083

Housing Units

\$116,053

Average
Household Income

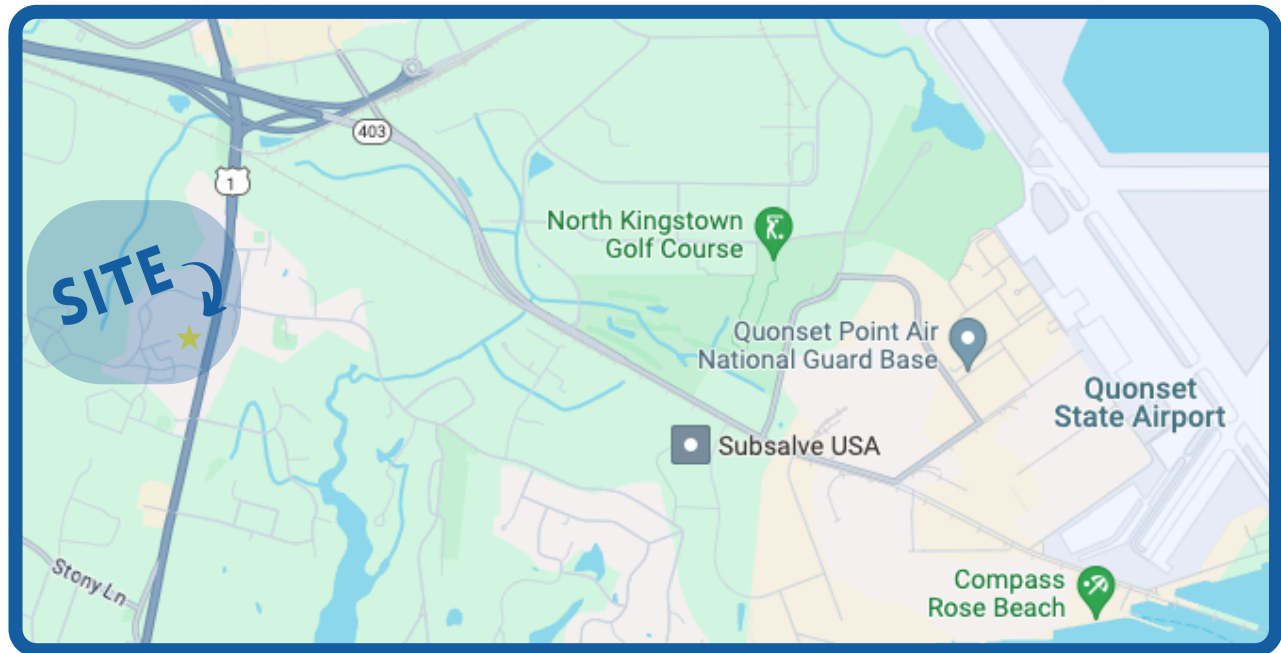
2.38

Average
Household Size

0.54%

Annual Population
Growth Rate/Year

Date reported by the 2020 Census and rhodeisland-demographics.com



SPINNAKER GROUP, INC.

Andy Kushner

(401) 603 - 8511

akushner@spinnagroup.com

Kate McMorrow

(401) 477 - 0405

kcmorrow@spinnagroup.com

FIND US



SPINNAKER GROUP, INC.

Andy Kushner

(401) 603 - 8511

akushner@spinngroup.com

Kate McMorrow

(401) 477 - 0405

kcmorrow@spinngroup.com