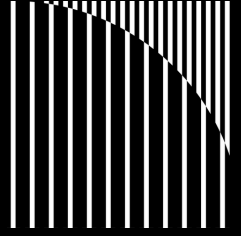
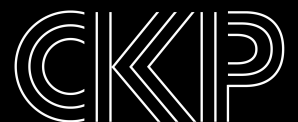


# Available for Lease 51 Glen Street



Glen Cove, NY

COMPASS  
COMMERCIAL



# 51 Glen Street

---

A rare opportunity to place your office in a 1905 tudor style Glen Cove landmark. The ground floor consists of 2,015 rentable square feet, while the second floor offers 2,135 square feet. Each floor can be leased out individually or combined for a total of 4,150 rentable square feet.

Beautiful attention to detail, highlighting old world charm with twenty first century Class A office technology will highlight your business' success during client consultations. Video door-lock buzz entry allows for a safe interior space, while expertly restored windows allow for an abundance of natural light to flood the workspace. Fully elevated with an ADA bathroom, 51 Glen Street meets all building codes allowing for everyone to fully access the premises.

Superior attention to detail throughout this expertly renovated former U.S. Post Office is evident from the moment you walk into the lobby throughout each individual office. Parking is available immediately behind the building and in the parking garage. Access to Glen Cove's vibrant downtown is instantly accessible, either for a quick bite or stroll during lunch.

A phenomenal work atmosphere that cannot be replicated in any of today's office environments.

*Offered at \$40/ft MG*

	Rentable Sqft	Usable Sqft	Private Ofiices	Conference Room	Server Room	Pantry	Reception/ Administrative Area
Ground Floor	2,015 sqft	1,752 sqft	5	1		1	1
Second Floor	2,135 sqft	1,875 sqft	6		1	1	1

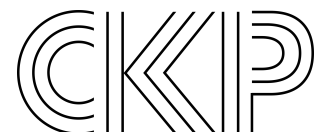
# COMPASS COMMERCIAL

## 1st Floor

---



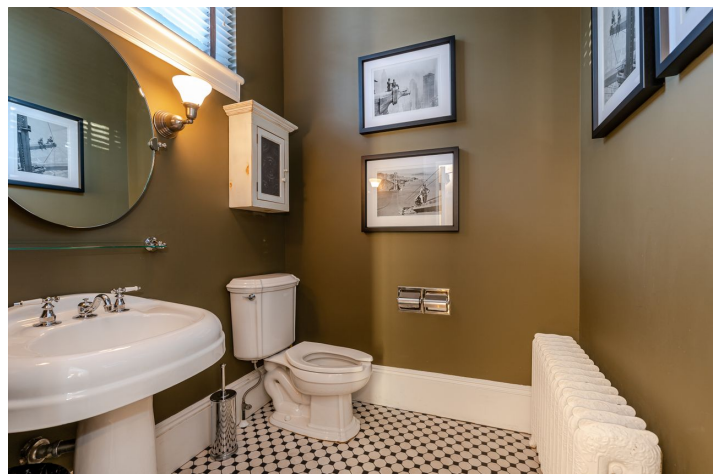
Chris K. Pappas  
VP of Commercial Services  
Lic. Assoc. R.E. Broker  
M: 516.659.6508  
O: 516.427.2000  
chris.pappas@compass.com

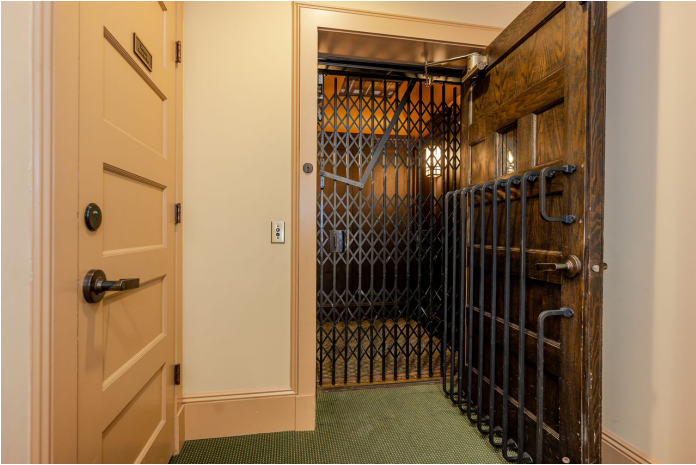


# 2nd Floor

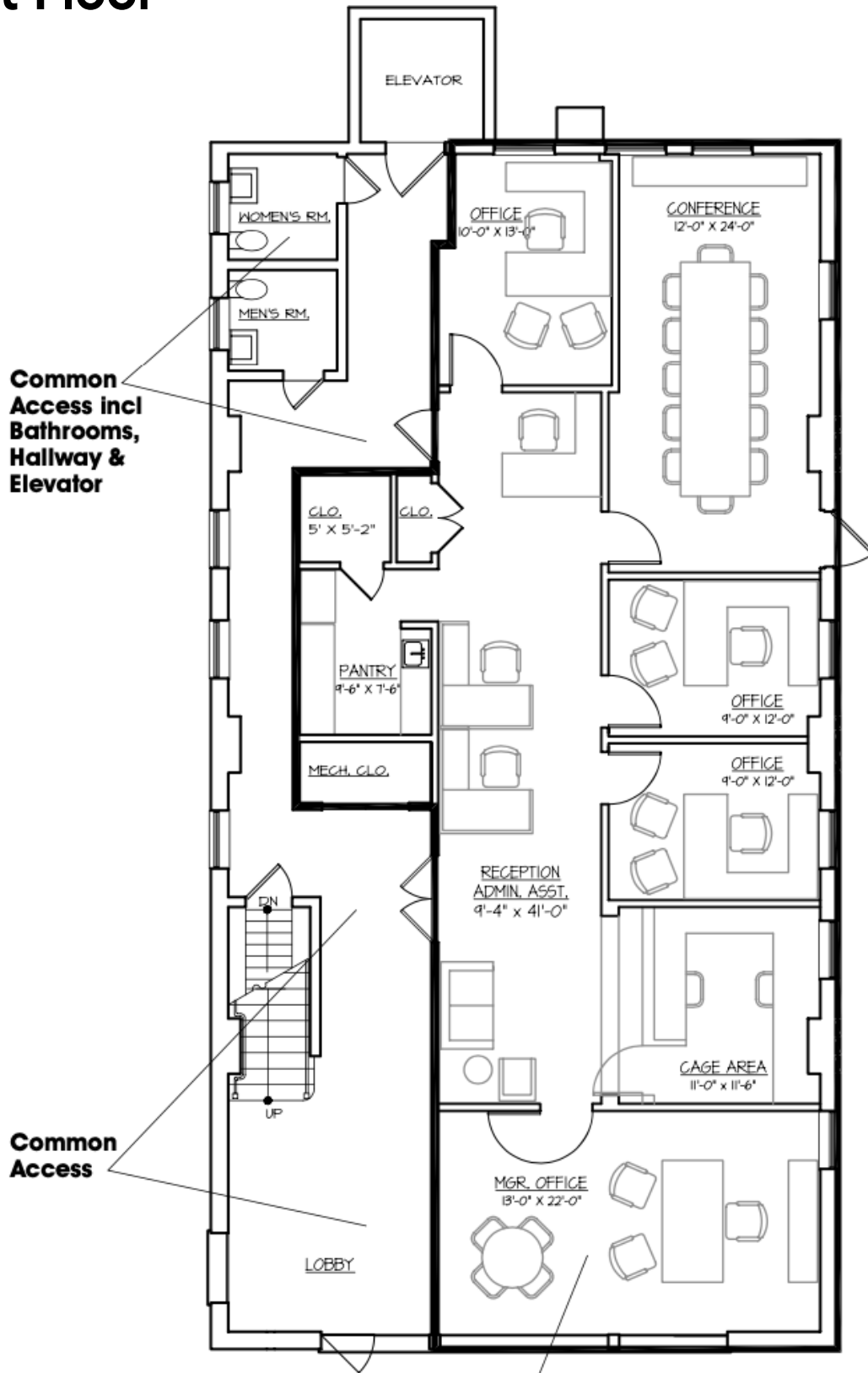
---







# 1st Floor

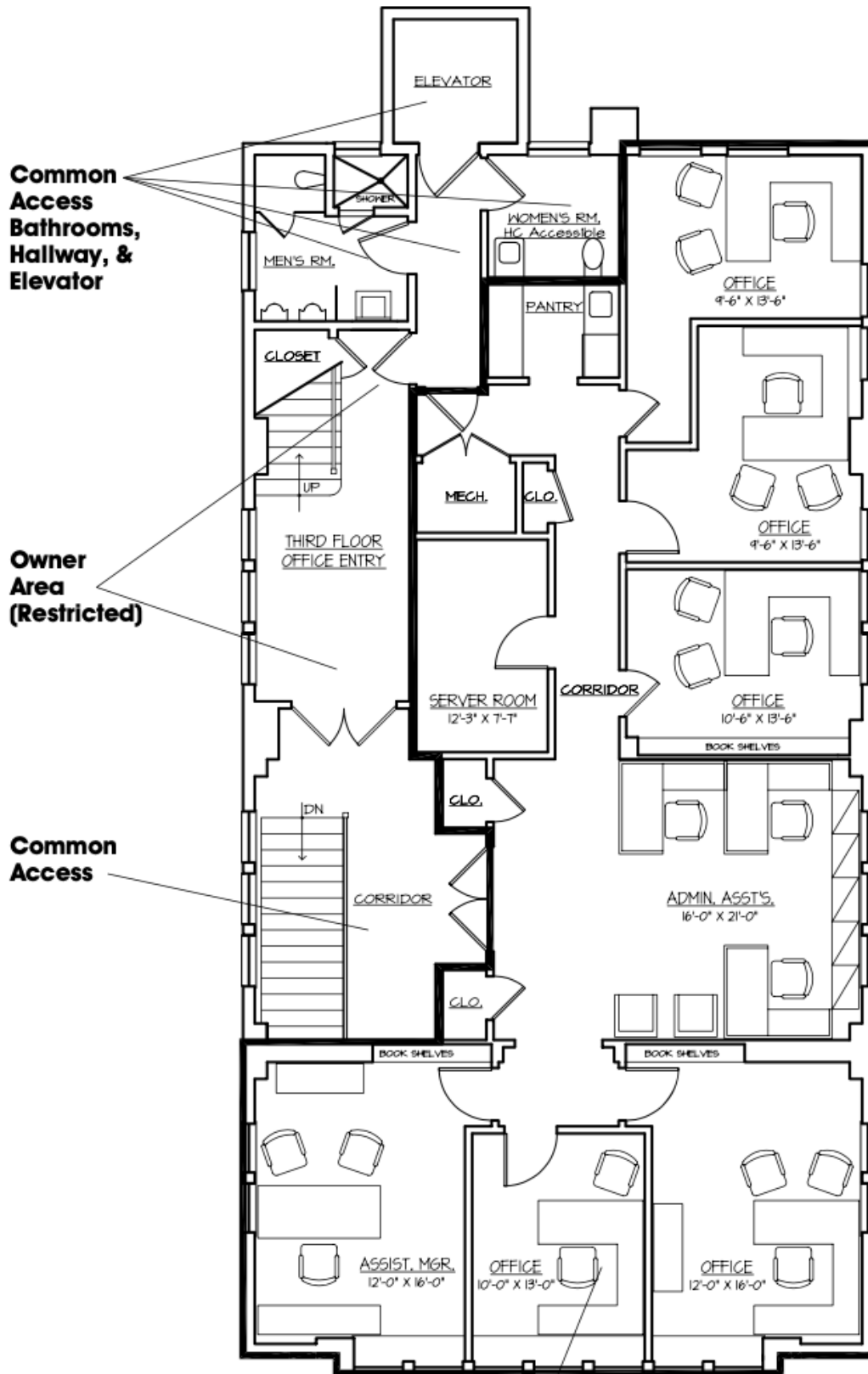


Common Access incl Bathrooms, Hallway & Elevator

Common Access

Useable area= 1752 sq. ft.  
Rentable area= 2015 sq. ft.

# 2nd Floor



Usable area = 1857 sq. ft.  
Rentable area = 2135 sq. ft.