

FOR SALE

RIVER'S EDGE BUSINESS PARK
UNIT 1170 – 570 SHERLING PLACE
PORT COQUITLAM, BC



5,893 SF INDUSTRIAL UNIT
WITH DOCK & GRADE LOADING
NEW PRICE - \$695 PSF



Rick Eastman

Personal Real Estate Corporation
Executive Vice President, Industrial
+1 604 640 5863
rick.eastman@cushwake.com

Kevin Volz

Personal Real Estate Corporation
Vice President, Industrial
+1 604 640 5851
kevin.volz@cushwake.com

FOR SALE

RIVER'S EDGE BUSINESS PARK UNIT 1170 – 570 SHERLING PLACE PORT COQUITLAM, BC

OPPORTUNITY

River's Edge Business Park offers business owners a rare opportunity to purchase a premium dock and grade loading warehouse/distribution facility in the Tri-City area. Stunning architectural design and attractive landscaping reflect a superb corporate image.

LOCATION

Situated in the heart of the Dominion Triangle area of Port Coquitlam, 570 Sherling Place is located at the high exposure corner of Sherling Place and the Fremont Connector in the brand new River's Edge Business Park. With close proximity to the Pitt River Bridge and the Golden Ears Bridge to the east, the Coast Meridian Overpass to the west and being only minutes from the Cape Horn Interchange, the Port Mann Bridge and Highway #1, River's Edge Business Park offers a superb location for warehousing and distribution.

Surrounded by the Fremont Village Shopping Centre, Mosaic's Dominion residential development, Carnoustie Golf Club and recreational riverside parks and trails, River's Edge Business Park also offers unparalleled retail and lifestyle amenities.

ZONING

M-3 Industrial – allows for clean manufacturing, high tech, service and distribution uses.

COMMENTS

Perhaps the only immediately available dock loading strata warehouse in the Tri-Cities market.

AVAILABLE AREA

Main Floor Warehouse	4,690 sf
Second Floor Office	1,203 sf
Total Available Area	5,893 sf

PROPERTY TAXES (2024)

\$31,702.68

STRATA FEES

Approximately \$1,293.86 per month

SALE PRICE

\$4,095,000 (\$695 PSF)

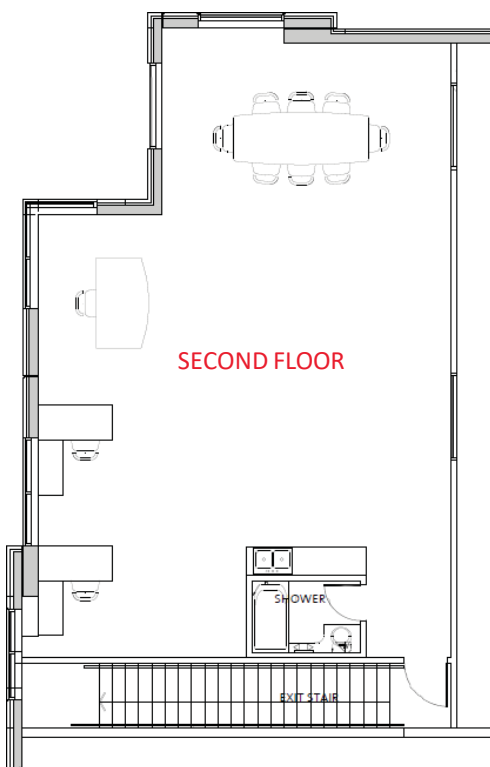
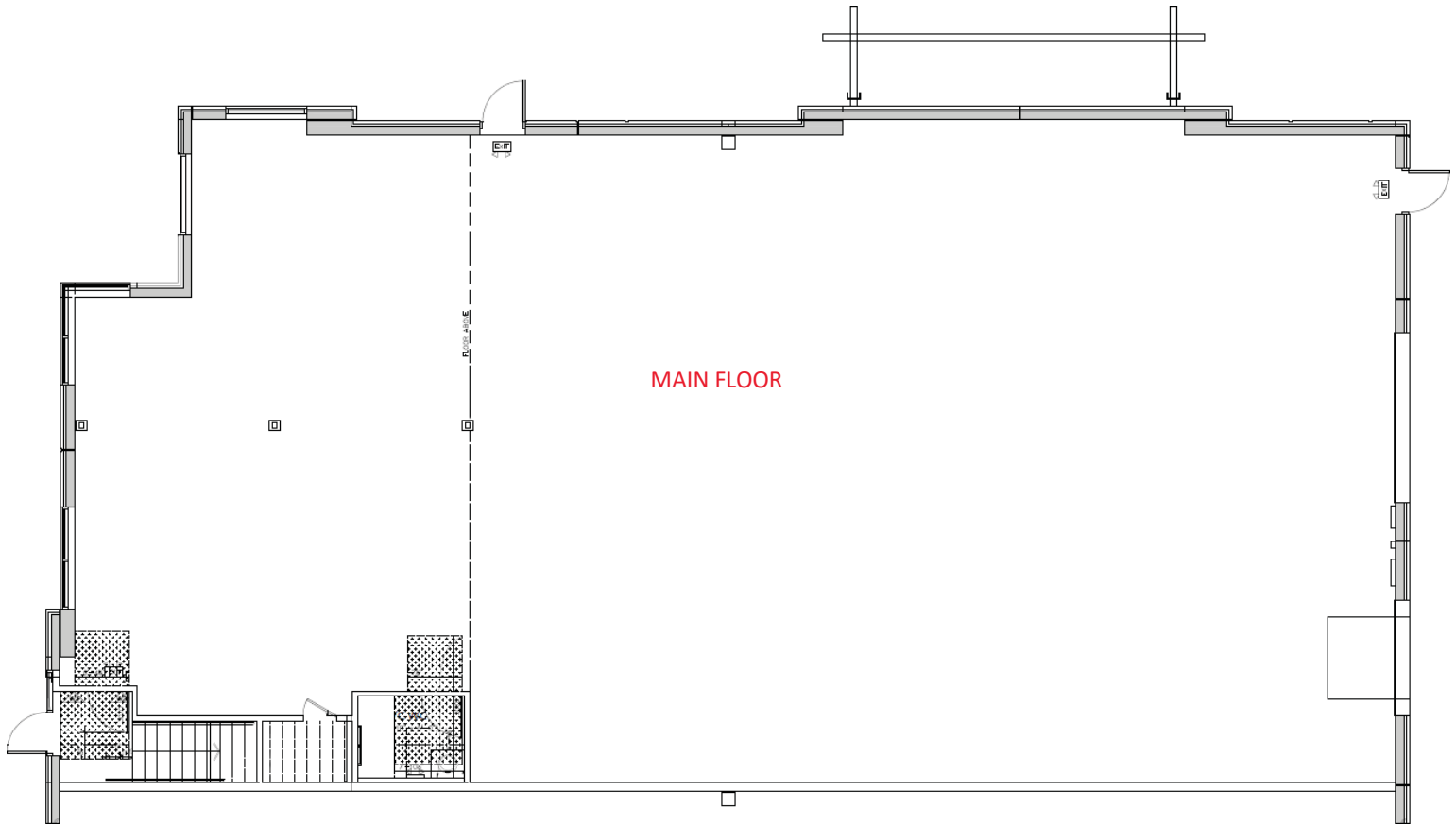
AVAILABILITY

60 days notice



5,893 SF INDUSTRIAL UNIT

WITH DOCK & GRADE LOADING



PROPERTY FEATURES

- High end architecturally designed building built in 2017
- Concrete tilt-up construction with insulated exterior walls
- Extensive ground and mezzanine level glazing
- 24' clear ceiling height
- 500 lbs per square foot floor load rating
- ESFR rated sprinkler system
- Two (2) skylights
- T-5 energy efficient fluorescent lighting
- 100 amp, 347/600 volt, 3 phase electrical service (transformed to 125 amp, 120/208 volt)
- Rear dock (8' x 10') and grade (12' x 12') level loading doors
- Ample truck turning area
- Modern west coast paint colours with decorative glulam beam canopies on exterior
- Corner unit

FOR SALE

RIVER'S EDGE BUSINESS PARK
UNIT 1170 – 570 SHERLING PLACE
PORT COQUITLAM, BC



Rick Eastman

Personal Real Estate Corporation
Executive Vice President, Industrial
+1 604 640 5863
rick.eastman@cushwake.com

Kevin Volz

Personal Real Estate Corporation
Vice President, Industrial
+1 604 640 5851
kevin.volz@cushwake.com

E.&O.E.: This communication is not intended to cause or induce breach of an existing agency agreement. The information contained herein was obtained from sources which we deem reliable and, while thought to be correct, is not guaranteed by Cushman & Wakefield ULC (08/23/bg)

©2024 Cushman & Wakefield. All rights reserved. The information contained in this communication is strictly confidential. This information has been obtained from sources believed to be reliable but has not been verified. NO WARRANTY OR REPRESENTATION, EXPRESS OR IMPLIED, IS MADE AS TO THE CONDITION OF THE PROPERTY (OR PROPERTIES) REFERENCED HEREIN OR AS TO THE ACCURACY OR COMPLETENESS OF THE INFORMATION CONTAINED HEREIN, AND SAME IS SUBMITTED SUBJECT TO ERRORS, OMISSIONS, CHANGE OF PRICE, RENTAL OR OTHER CONDITIONS, WITHDRAWAL WITHOUT NOTICE, AND TO ANY SPECIAL LISTING CONDITIONS IMPOSED BY THE PROPERTY OWNER(S). ANY PROJECTIONS, OPINIONS OR ESTIMATES ARE SUBJECT TO UNCERTAINTY AND DO NOT SIGNIFY CURRENT OR FUTURE PROPERTY PERFORMANCE.