

FLEX SPACE FOR LEASE CORRIDOR INDUSTRIAL PARK

8725 Bollman Pl., Savage, MD 20763

Available: 2,604 SF

**LEE &
ASSOCIATES**
COMMERCIAL REAL ESTATE SERVICES



LISTING DATA

BAY 3: 2,604 SF
AVAILABLE: August 1, 2025

BUILDING DATA

TOTAL BUILDING SF: 28,755 SF
ZONING: M2
SUBMARKET: Howard County
YEAR BUILT: 1985

PROPERTY HIGHLIGHTS

- 14'-17' clear
- Less than 3 miles to NSA
- Immediate access to 95 and 32



PROPERTY OVERVIEW

Rarely available small industrial suite for lease in the heart of the BW Corridor. This suite is 2,604 SF and offers a dock. The property is M2 so allows for a variety of uses.

1/4th Office | 3/4th Warehouse

Kate Jordan, SIOR
Principal
410.336.5314
kjordan@lee-associates.com

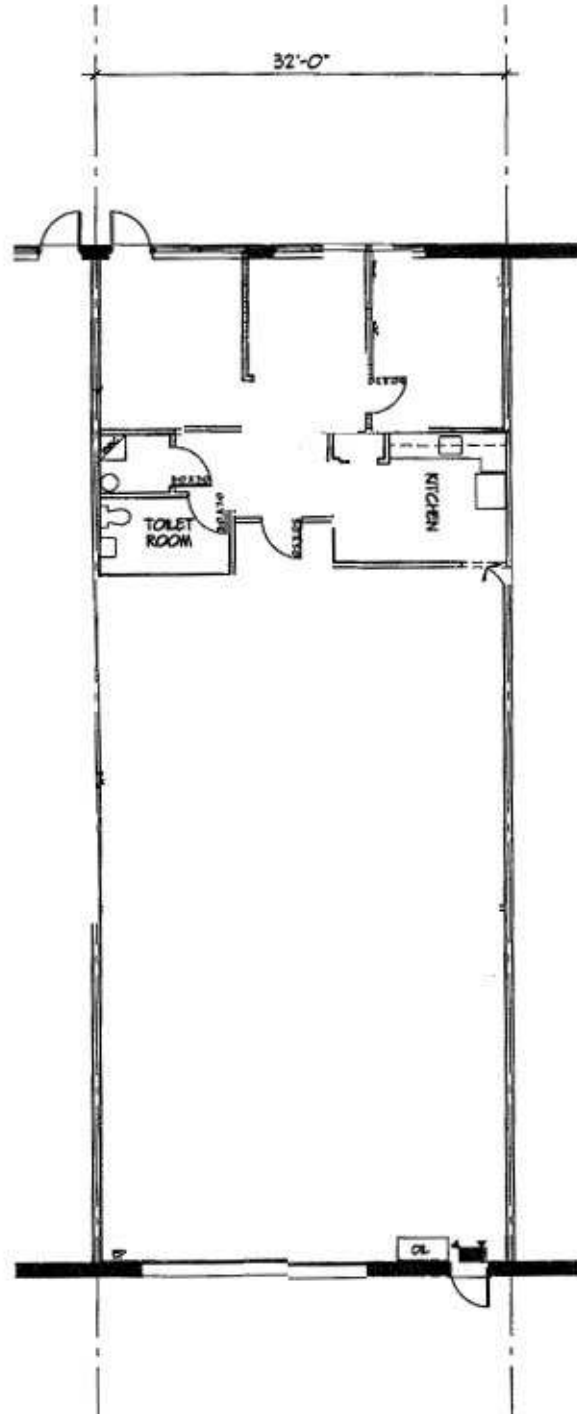
Marley Black, SIOR
Principal
443.741.4050
mblack@lee-associates.com

All information furnished regarding property for sale, rental or financing is from sources deemed reliable, but no warranty or representation is made to the accuracy thereof and same is submitted to errors, omissions, change of price, rental or other conditions prior to sale, lease or financing or withdrawal without notice. No liability of any kind is to be imposed on the broker herein.

FLEX SPACE FOR LEASE CORRIDOR INDUSTRIAL PARK

8725 Bollman Pl., Savage, MD 20763

Available: 2,604 SF



Kate Jordan, SIOR
Principal
410.336.5314
kjordan@lee-associates.com

Marley Black, SIOR
Principal
443.741.4050
mblack@lee-associates.com

All information furnished regarding property for sale, rental or financing is from sources deemed reliable, but no warranty or representation is made to the accuracy thereof and same is submitted to errors, omissions, change of price, rental or other conditions prior to sale, lease or financing or withdrawal without notice. No liability of any kind is to be imposed on the broker herein.