

DENTAL/MEDICAL SPACE FOR LEASE - SUNNYVALE

“ Sunnyvale Dental Center”



516 West Remington Drive

Features:

- High Identity Corner Location: Sunnyvale-Saratoga Road
- Near High Technology Employers, Apple (2 Miles)
- Beautiful Views, Full Height Glass
- Parking Ratio: 5.29/1000
- Recent Upgrades: New Roof, HVAC
- Call for Pricing, Tour

Available Suites:

- Unit 1B: 650 SF Medical Office
- Unit 3A: 1,142 SF Dental Office
- Unit 4B: 598 SF Dental Office



Please Contact Exclusive Agents:

JANA GLUCKMAN | jgluckman@ritchiecommercial.com
DRE Lic. 00693034 | 1 408.529.7988

The information contained herein has been obtained from sources we deemed reliable. We cannot, however, assume responsibility for its accuracy.

ITCHIE *Commercial*
RESPONSIBLE REAL ESTATE

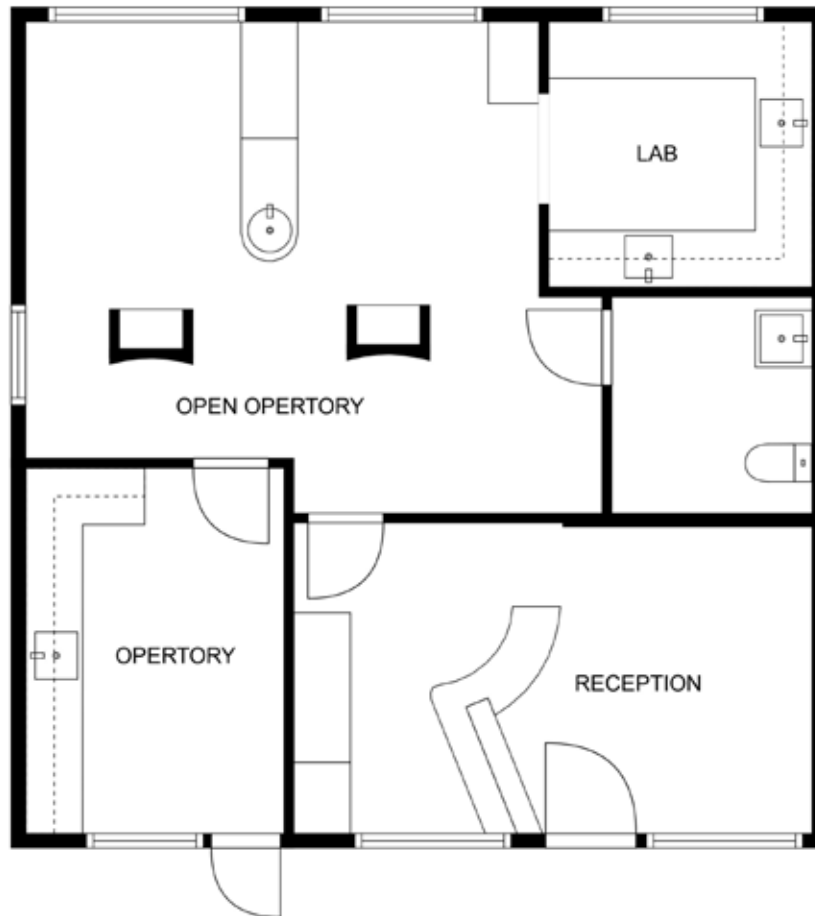
34 W. SANTA CLARA STREET, SAN JOSE, CA 95113
BRE # 01209214 | www.ritchiecommercial.com
1 408.971.2700 f 1 408.971.1600

San Francisco | San Jose | Walnut Creek

DENTAL/MEDICAL SPACE FOR LEASE - SUNNYVALE

“ Sunnyvale Dental Center”

516 West Remington Drive, Unit 4A, Sunnyvale



PRODUCED BY 18 REAL ESTATE MEDIA - This Floorplan Diagram demonstrates the basic layout of the home in a diagram that resembles a blueprint. This diagram is not derived from actual measurements of the home, and it is to be used for illustrative purposes only. This diagram is not to scale, may contain inaccuracies and is not to be relied upon for any purpose that requires the precise measurement of the home that one might expect from a professional appraiser or other licensed inspector. Gross Living Area information supplied by Cubicasa. Potential buyers should investigate the home independently to their satisfaction.

Please Contact Exclusive Agents:

JANA GLUCKMAN jgluckman@ritchiecommercial.com
DRE Lic. 00693034 1 408.529.7988

ITCHIE *Commercial*
RESPONSIBLE REAL ESTATE

34 W. SANTA CLARA STREET, SAN JOSE, CA 95113
BRE # 01209214 | www.ritchiecommercial.com
1 408.971.2700 f 1 408.971.1600

The information contained herein has been obtained from sources we deemed reliable. We cannot, however, assume responsibility for its accuracy.

San Francisco | San Jose | Walnut Creek

DENTAL/MEDICAL SPACE FOR LEASE - SUNNYVALE

“ Sunnyvale Dental Center”



Available Suite:

- Unit 3A: 1,142 SF Dental Office

Please Contact Exclusive Agents:

JANA GLUCKMAN | jgluckman@ritchiecommercial.com
DRE Lic. 00693034 | 1 408.529.7988

ITCHIE *Commercial*
RESPONSIBLE REAL ESTATE

34 W. SANTA CLARA STREET, SAN JOSE, CA 95113
BRE # 01209214 | www.ritchiecommercial.com
1 408.971.2700 f 1 408.971.1600

The information contained herein has been obtained from sources we deemed reliable.
We cannot, however, assume responsibility for its accuracy.

San Francisco | San Jose | Walnut Creek