


HIGHLANDS ELITE
— REAL ESTATE —
COMMERCIAL



Property Summary:

Sale Price:	\$750,000	The offering is s located just north of the I-40 interchange with over 147 feet of frontage/visibility along TN 111
Lot Size:	0.68 +/- Acres	The property is a vacant land parcel that consists of cleared, paved flat terrain.
Zoning Designation:	Regional Commercial	The CR District is intended for medium to large-scale commercial operations of a predominantly regional nature.


HIGHLANDS ELITE
REAL ESTATE
COMMERCIAL



Property Highlights:

The subject property totals 0.68+/- acres offering multiple road frontages with 145+/- feet of frontage along Salem Church Road and over 147 feet of frontage/visibility along TN 111. AADT counts in excess of 21,200 vpd along TN 111. The property has a Regional Commercial (CR) zoning designation which offers a wide array of commercial uses to include office, retail, entertainment, churches and some medical uses. The parcel provides quick access to Interstate 40 being less than 1 mile north of I-40 Exit 288. The property is cleared, paved and has a primarily flat topography. The entire site is situated within a QOZ. Utilities to site. Cookeville is in the Top 10 fastest growing micropolitan markets in the nation and is located approximately 1.5 hours west of Knoxville, 1.5 hours east of Nashville and 1.5 hours north of Chattanooga.





HIGHLANDS ELITE

— REAL ESTATE —

COMMERCIAL

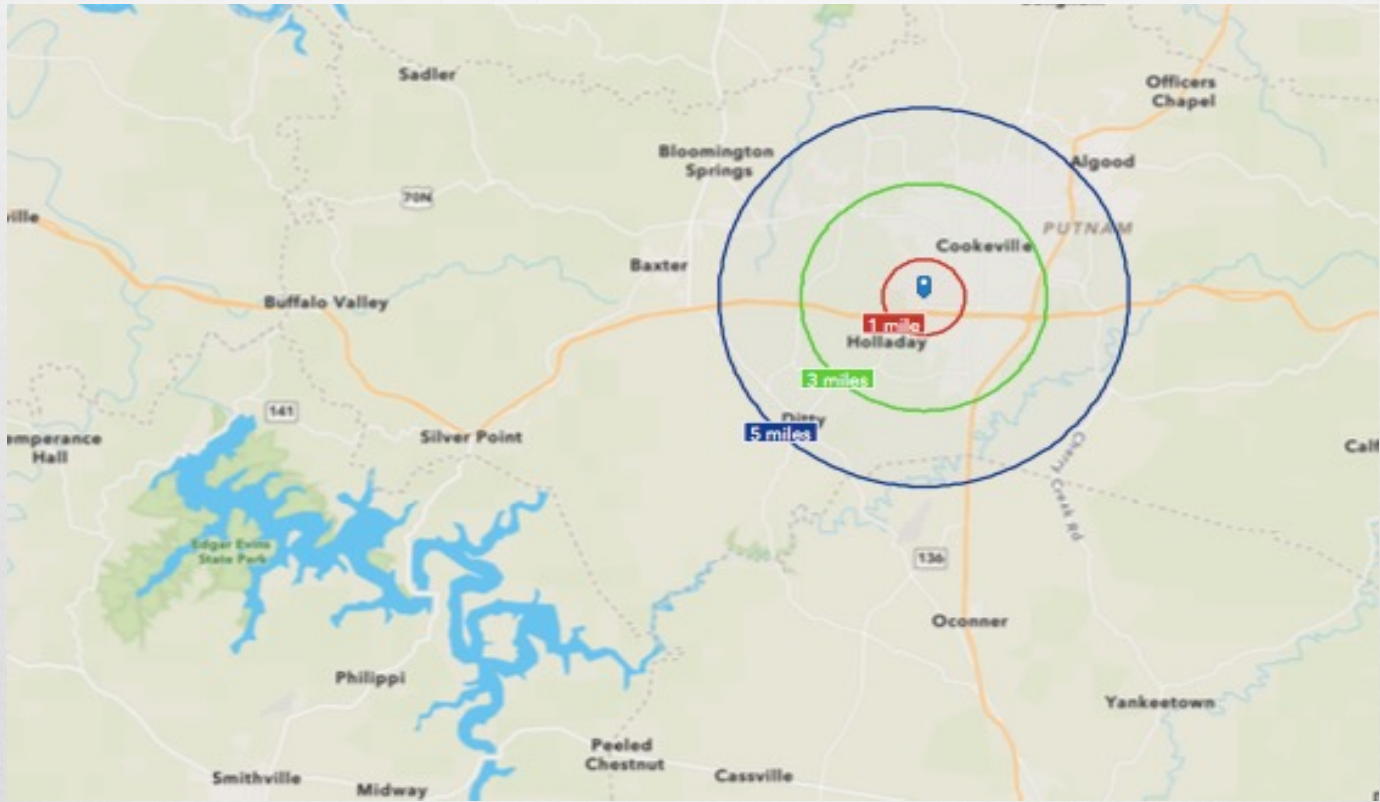
Location Maps:



This brochure, prepared by Highlands Elite Real Estate, is for advertising and general information purposes only. No warranty or representation, express or implied, is made as to the accuracy of the information contained herein, and the same is submitted subject to errors, omissions, change of price, rental or other conditions, prior sale, lease or withdrawal without notice. No warranties or representations are made as to the accuracy and reliability. Any interested party should conduct their own inspections and inquiries.



HIGHLANDS ELITE
— REAL ESTATE —
COMMERCIAL



POPULATION	1 MILE	3 MILES	5 MILES
-------------------	---------------	----------------	----------------

Total Population	2,726	23,236	44,364
Median Age	42.0	30.1	32.7

Households/Income	1 MILE	3 MILES	5 MILES
--------------------------	---------------	----------------	----------------

Total Households	1,227	9,255	18,030
Average HH Size	2.15	2.26	2.32
Average HH Income	\$60,105	\$60,698	\$60,991





HIGHLANDS ELITE
— REAL ESTATE —
COMMERCIAL

Site Photographs:

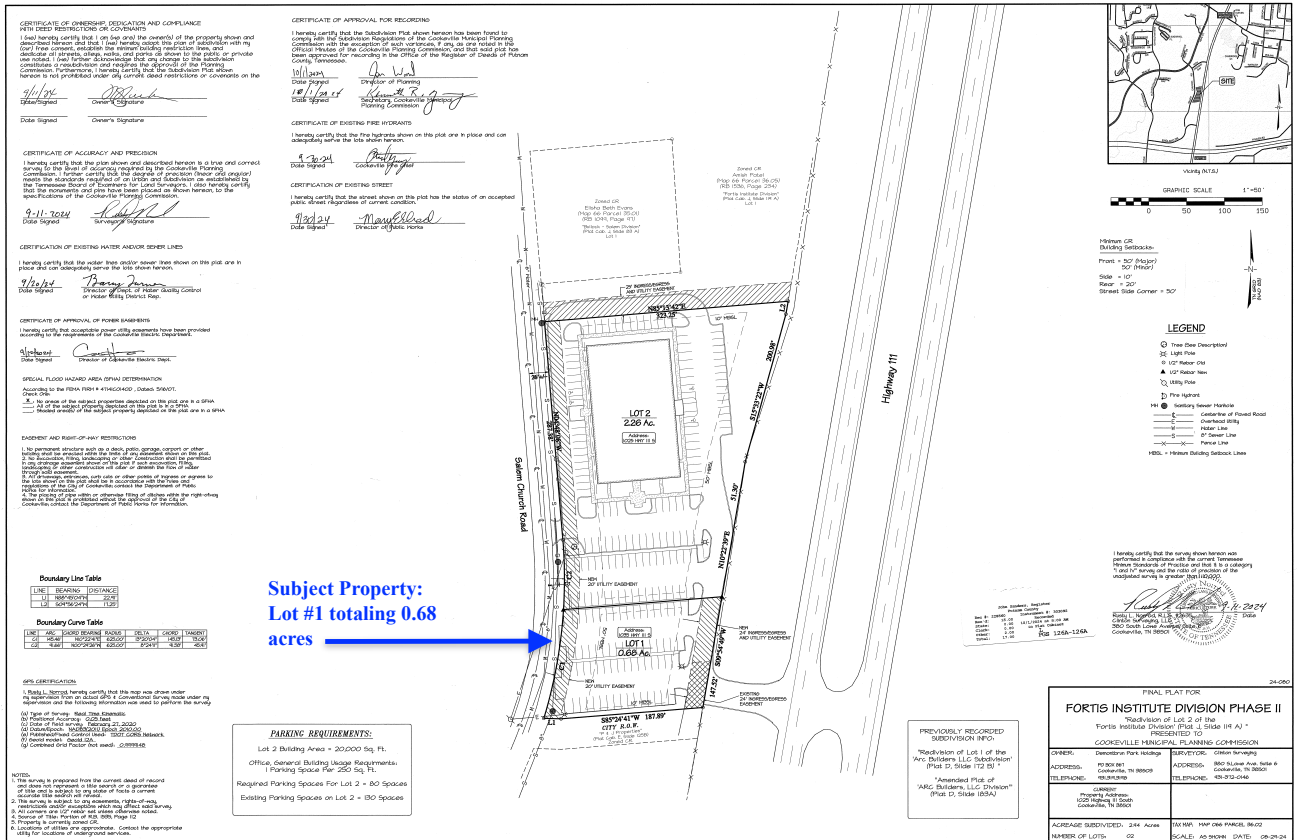




HIGHLANDS ELITE REAL ESTATE COMMERCIAL

Survey (0.68 Acres – Lot #1):

Exhibit "A"



NOTE: Not Shown, Site subject to a Sign/Billboard Easement situated within and encompassing the 50' setback running along the the parcel's easternmost property line and the TN 111 ROW

This brochure, prepared by Highlands Elite Real Estate, is for advertising and general information purposes only. No warranty or representation, express or implied, is made as to the accuracy of the information contained herein, and the same is submitted subject to errors, omissions, change of price, rental or other conditions, prior sale, lease or withdrawal without notice. No warranties or representations are made as to the accuracy and reliability. Any interested party should conduct their own inspections and inquiries.



HIGHLANDS ELITE

REAL ESTATE



The City of Cookeville, located in Putnam County, TN was incorporated in 1903, is located 79 miles east of Nashville and 101 miles west of Knoxville at the intersection of I-40 and Highway 111 in the Upper Cumberland Region of Middle Tennessee. The Municipality's land area is 35.89 square miles. Cookeville is the county seat of Putnam County and is the largest of four cities located within the county.

Cookeville offers a wide variety of small shops, boutiques, restaurants, recreational opportunities, and much more.

Cookeville is home to Tennessee Technological University , Cookeville Regional Medical Center and is one of the fastest growing micropolitan markets in the nation.

