



Office/Industrial Space for Lease

Evan Molde

Associate Vice President
+1 952 897 7776
evan.molde@colliers.com

1600 Utica Avenue S Ste 300
St. Louis Park, MN 55416
P: +1 952 897 7700
colliers.com

Oakview Business Center I 1284 Corporate Center Drive, Eagan, MN

Building Amenities

- > 85,600 SF industrial building
- > 16' clear height
- > Fully sprinklered
- > Custom designed spaces
- > Convenient access to I-494, I-35E, Hwy 55 & Hwy 52
- > Close proximity to area shopping & dining
- > Ample tenant & visitor parking
- > Five minutes from MSP International Airport

Copyright © 2024 Colliers International. Information herein has been obtained from sources deemed reliable, however its accuracy cannot be guaranteed. The user is required to conduct their own due diligence and verification.

For Lease

Oakview Business Center I

Property Address:

1284 Corporate Center Drive | Eagan, MN

Currently Available:

Suite 175:

4,105 SF Total

1,590 SF Office

2,515 SF Warehouse

• One (1) dock door

Suite 400:

13,130 SF Total

4,709 SF Office

8,421 SF Warehouse

• Two (2) dock doors

Building Square Feet:

85,600 square feet total

Year Built:

1985

Clear Height:

16'

Lease Rates:

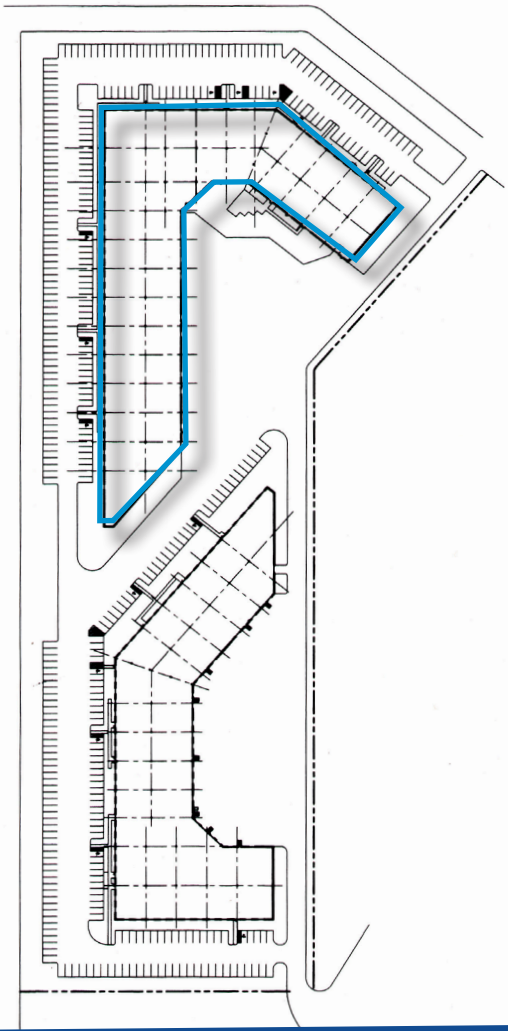
Negotiable

2024 Est CAM & RE Tax:

\$2.20 PSF CAM

\$1.64 PSF Tax

\$3.84 PSF Total



Contact:

Evan Molde

Associate Vice President

+1 952 897 7776

evan.molde@colliers.com



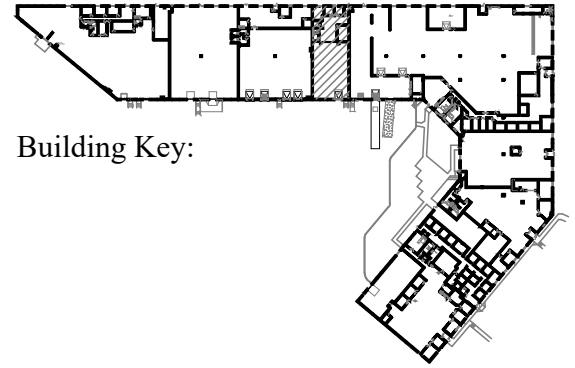
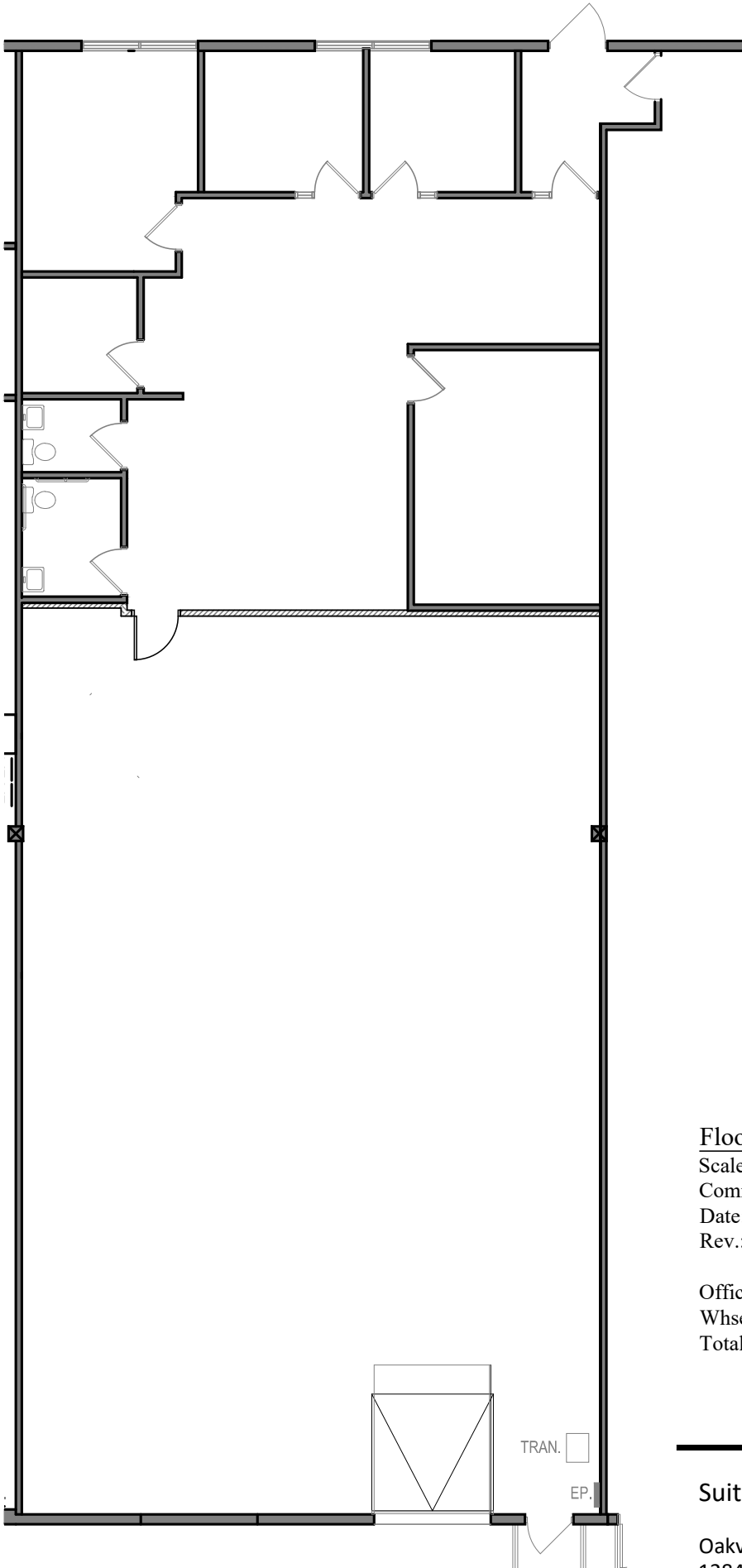
Colliers

1600 Utica Avenue S Ste 300

St. Louis Park, MN 55416

P: +1 952 897 7700

colliers.com



Building Key:

Floor Plan

Scale: 3/32"=1'-0"

Comm. 2024.179.0

Date: 05.01.2024

Rev.: 05.16.2024

Office = 1,590 Sq. Ft.

Whse. = 2,515 Sq. Ft.

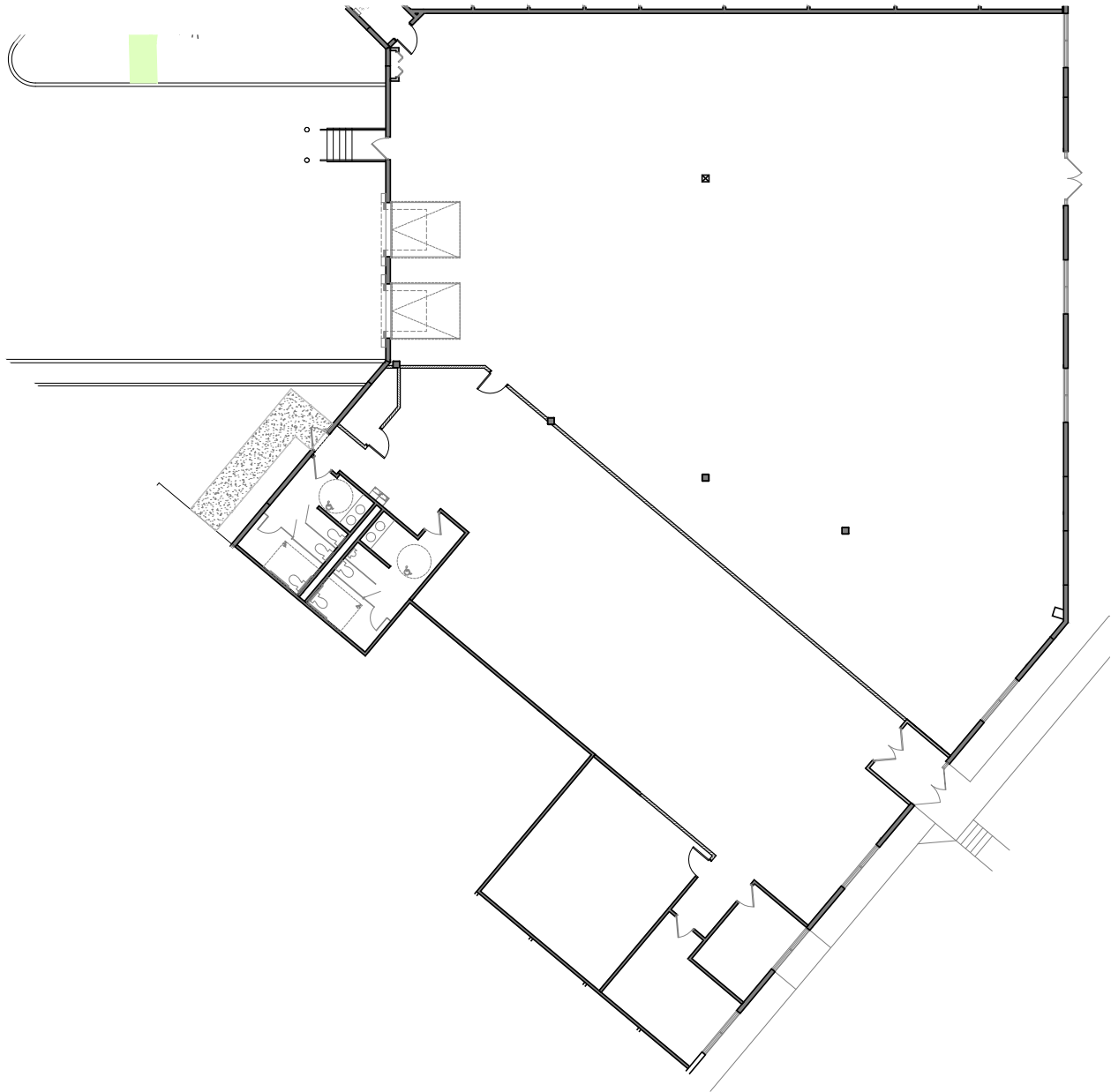
Total = 4,105 Sq. Ft.

Suite 175

Oakview Business Park I
 1284 Corporate Center Drive
 Eagan, MN 55121



Leasing Contact:
 Evan Molde: (952) 897-7776

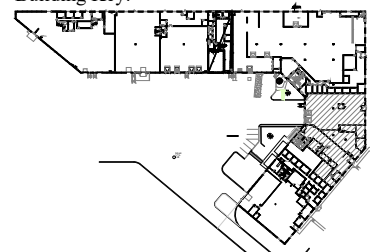


Floor Plan

Scale: 1/16"=1'-0"
Comm. 2024.080.0
Date: 05.13.2024
Rev. 05.16.2024

Office = 4,709 Sq. Ft.
Whse. = 8,421 Sq. Ft.
Total = 13,130 Sq. Ft.

Building Key:



Suite 400

Oakview Business Park I
1284 Corporate Center Drive
Eagan, MN 55121



Leasing Contact:
Evan Mohle (952) 897-7776