

FOR LEASE

RETAIL SPACE

Bay 1, 28 Strathmoor Drive, Sherwood Park, AB



HIGHLIGHTS

- Located in a busy truck stop
- 1,632 sq ft ± retail space available
- Walk in cooler
- Washroom
- Coolers in sales area
- Sales counter
- End unit

JOEL WOLSKI

Director, Associate

C 780.904.5630

joel@royalparkrealty.com

SCOTT ENDRES

Partner, Broker

C 780.720.6541

scott@royalparkrealty.com



ROYAL PARK
REALTY™

T 780.448.0800 F 780.426.3007
#201, 9083 51 Avenue NW Edmonton, AB T6E 5X4

royalparkrealty.com

For Lease | Bay 1, 28 Strathmoor Drive, Sherwood Park, AB



Property Details & Financials

MUNICIPAL ADDRESS	Bay 1, 28 Strathmoor Drive, Sherwood Park, AB
LEGAL DESCRIPTION	Plan: 1723278; Block: 1;
ZONING	DC75 (Direct Control Zone)
TYPE OF SPACE	Retail
SIZE	1,632 sq ft ±
PARKING	Scramble
LEASE RATE	\$15.00/sq ft
OP COST	TBD
LEASE TERM	5 years preferred
POSSESSION	Immediate

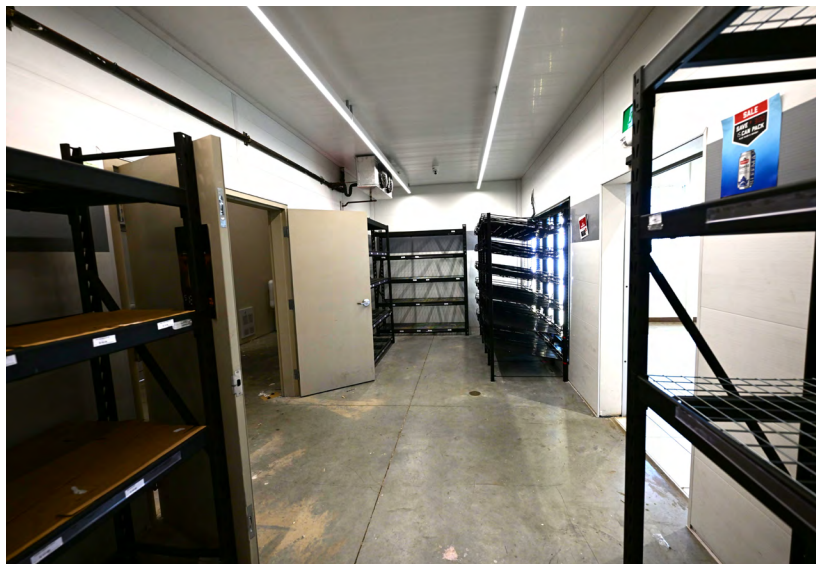
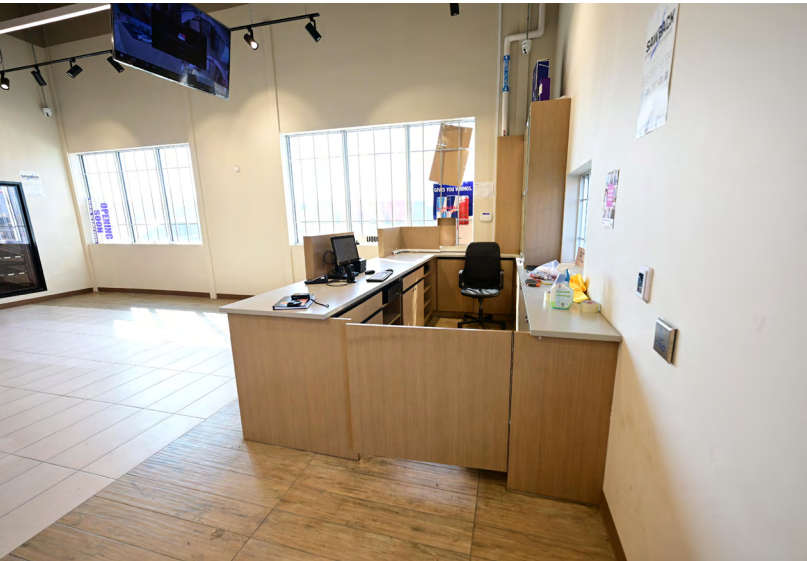


ROYAL PARK
REALTY™

T 780.448.0800 F 780.426.3007
#201, 9083 51 Avenue NW Edmonton, AB T6E 5X4

royalparkrealty.com

For Lease | Bay 1, 28 Strathmoor Drive, Sherwood Park, AB



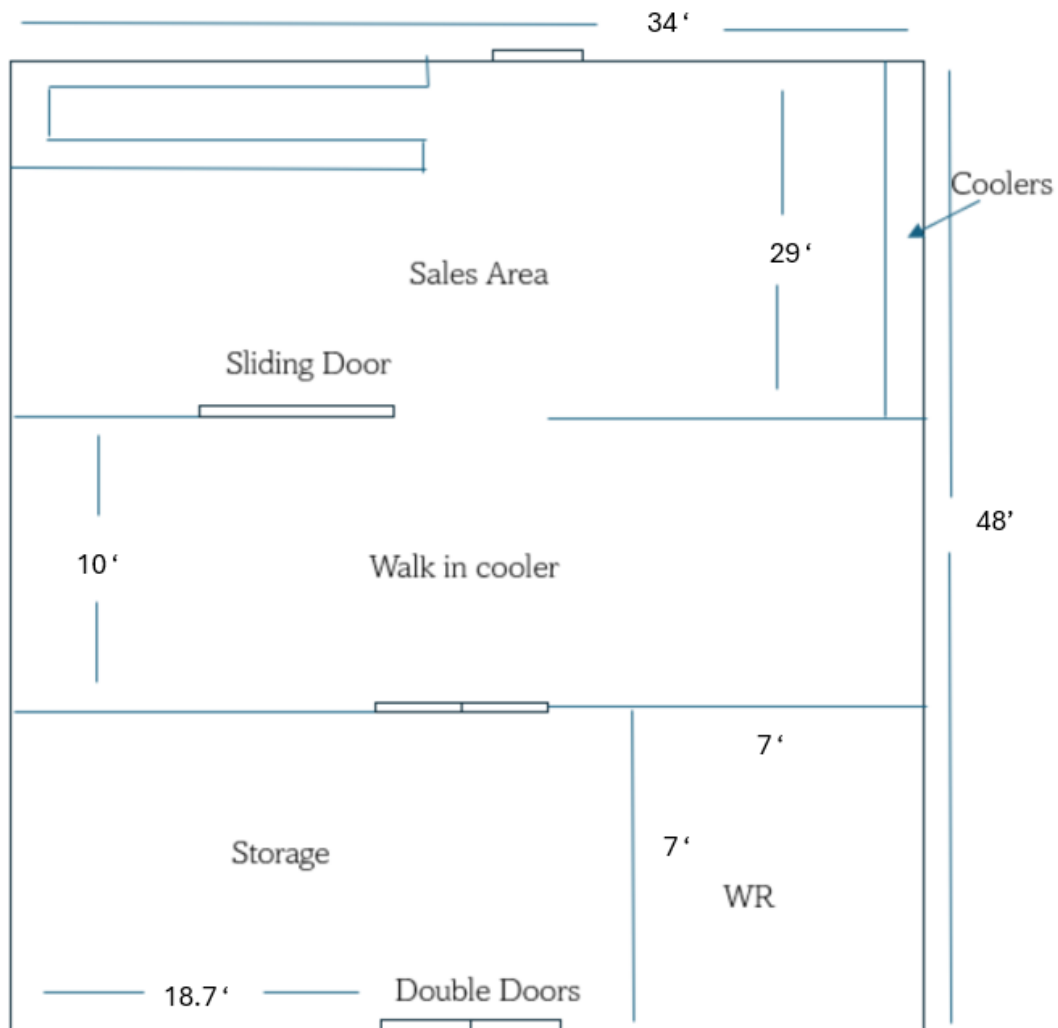
**ROYAL PARK
REALTY™**

T 780.448.0800 F 780.426.3007
#201, 9083 51 Avenue NW Edmonton, AB T6E 5X4

royalparkrealty.com

The information contained herein is believed to be correct, however does not form part of any future contract. The offering may be withdrawn at any time without notice or cause.

Floor Plan | Bay 1, 28 Strathmoor Drive, Sherwood Park, AB



Quality Based on **Results**, Not **Promises**.



JOEL WOLSKI

Director, Associate

C 780.904.5630

joel@royalparkrealty.com



SCOTT ENDRES

Partner, Broker

C 780.720.6541

scott@royalparkrealty.com



ROYAL PARK
REALTY™

T 780.448.0800 F 780.426.3007
#201, 9083 51 Avenue NW Edmonton, AB T6E 5X4

royalparkrealty.com