

MARITIME
PLAZA

FOR LEASE



1630
TIBURON
BLVD



DOWNTOWN
TIBURON
OFFICE SUITES
200 - 5,000 SQFT

Jake Levinson

415.786.4303
jake@groundmatrix.com
CalDRE #02021931

Alex Fee

209.981.7753
alex@groundmatrix.com
CalDRE #02018515



OFFICE | INDUSTRIAL | RETAIL
TEAM

1630

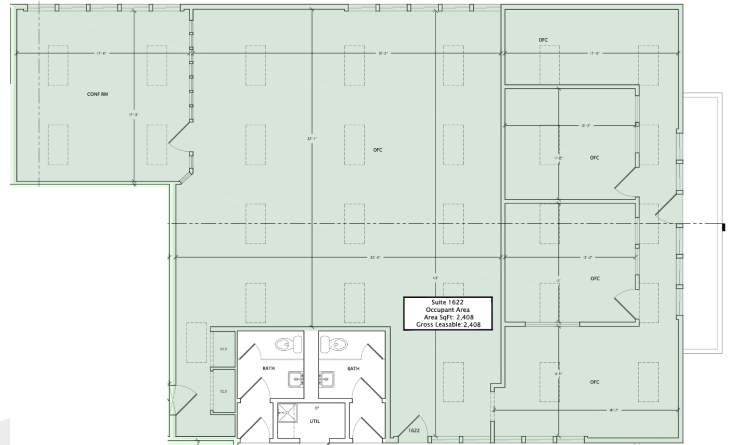
MARITIME OFFICE PARK
TIBURON BLVD
Tiburon, CA 94920



GROUND MATRIX

FOR LEASE | OFFICE BUILDING

Suite 1622



SUITE DESCRIPTION

Suite 1622 is perfect for technology, financial services, and professional services companies. This suite has a balanced mixture of open space and private offices.

SUITE HIGHLIGHTS

- Three Private Offices
- One Large Executive Conference Room
- Adjacent Restrooms

OFFERING SUMMARY

Lease Rate:	\$40.00 SF/year (NNN)
Available SF:	2,408 SF
NNN Expense Breakdown:	\$6/SQFT



Jake Levinson

415.786.4303
jake@groundmatrix.com
CalDRE #02021931

Alex Fee

209.981.7753
alex@groundmatrix.com
CalDRE #02018515

1630

MARITIME OFFICE PARK
TIBURON BLVD
Tiburon, CA 94920



GROUND MATRIX

FOR LEASE | OFFICE BUILDING

Suite 1622



Jake Levinson

415.786.4303
jake@groundmatrix.com
CalDRE #02021931

Alex Fee

209.981.7753
alex@groundmatrix.com
CalDRE #02018515

1630

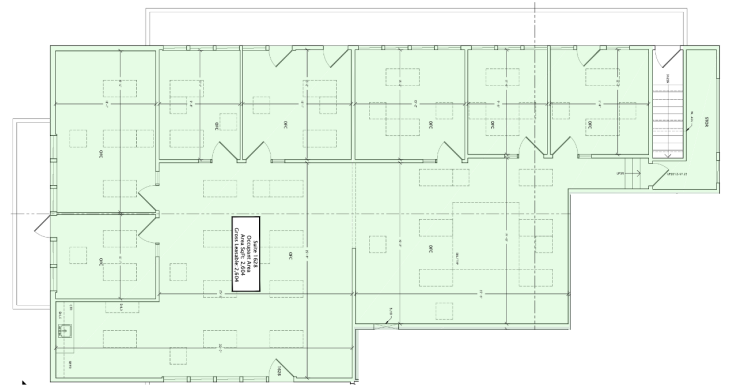
MARITIME OFFICE PARK
TIBURON BLVD
Tiburon, CA 94920



GROUND MATRIX

FOR LEASE | OFFICE BUILDING

Suite 1628



SUITE DESCRIPTION

Suite 1628 is the quintessential creative office space in Marin. High ceilings, incredible light, and an open floor plan with perimeter private offices makes this office ideal for any type of tenant.

UITE HIGHLIGHTS

- Five Private Offices
- Large Kitchen
- High Ceilings
- Open Skylights
- Two Private Balconies

OFFERING SUMMARY

Lease Rate:	\$40.00 SF/year (NNN)
Available SF:	2,604 SF
NNN Expense Breakdown:	\$6/SQFT



Jake Levinson

415.786.4303
jake@groundmatrix.com
CalDRE #02021931

Alex Fee

209.981.7753
alex@groundmatrix.com
CalDRE #02018515

1630

MARITIME OFFICE PARK
TIBURON BLVD
Tiburon, CA 94920



GROUND MATRIX

FOR LEASE | OFFICE BUILDING

Suite 1628



Jake Levinson

415.786.4303
jake@groundmatrix.com
CalDRE #02021931

Alex Fee

209.981.7753
alex@groundmatrix.com
CalDRE #02018515

1630

MARITIME OFFICE PARK
TIBURON BLVD
Tiburon, CA 94920



GROUND MATRIX

FOR LEASE | OFFICE BUILDING

Retailer Map



Jake Levinson
415.786.4303
jake@groundmatrix.com
CalDRE #02021931

Alex Fee
209.981.7753
alex@groundmatrix.com
CalDRE #02018515