



701

5TH AVENUE
SEATTLE, WASHINGTON

CREATIVE PLUG & PLAY
SUBLEASE

NEWMARK



COLUMBIA CENTER

- » Plug & Play with furniture available.
- » Full floor with open plan, multiple kitchen spaces, and perimeter rooms with seating
- » Unobstructed views of Elliott Bay, Mount Rainier, and the Seattle skyline.
- » Newly renovated atrium and access to the Columbia Tower Club, located on the 75th and 76th floors
- » Exceptional access to I-5, I-90, bus, light rail, transit tunnel and Seattle's ferry terminal
- » Fitness center with showers, lockers, and bike storage
- » Sky lobby on Floor 40 with conference center.

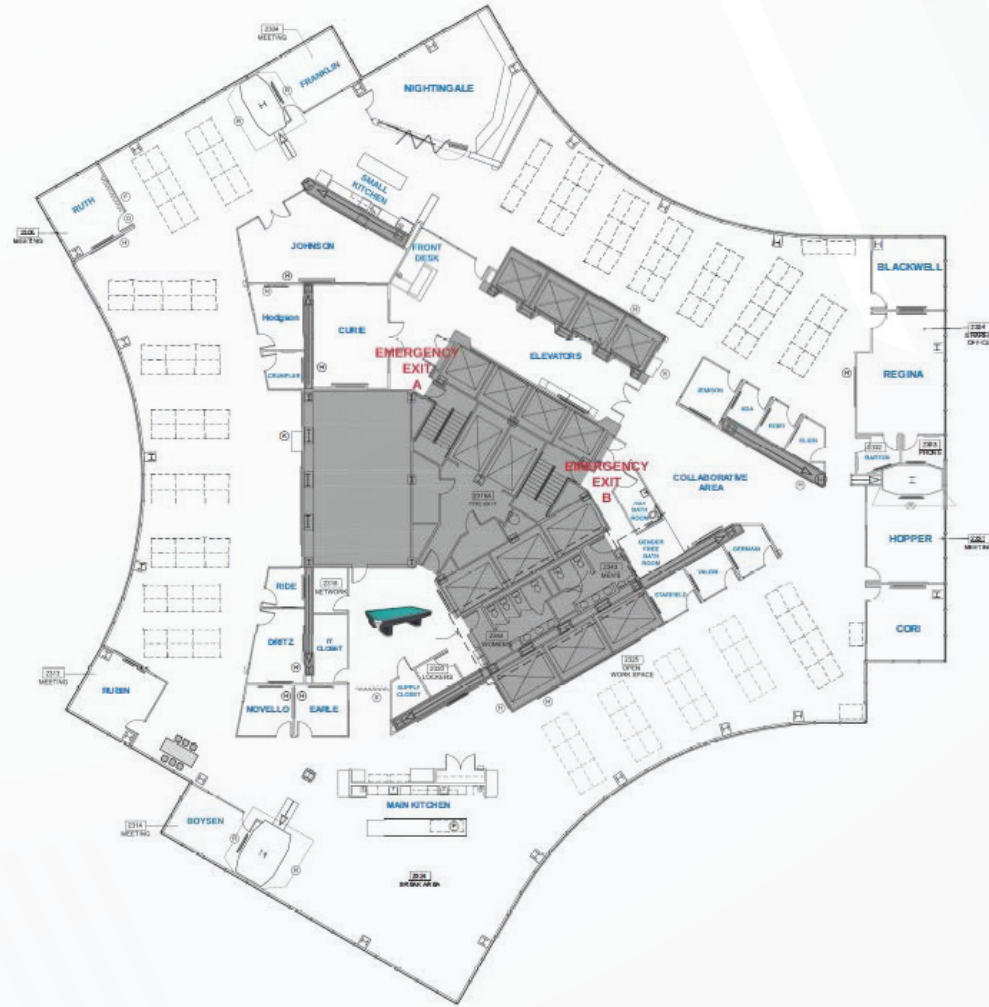
701

5TH AVENUE
SEATTLE, WASHINGTON

FLOOR 23

22,913 SF

Expiration: October 2027



FLOOR 25

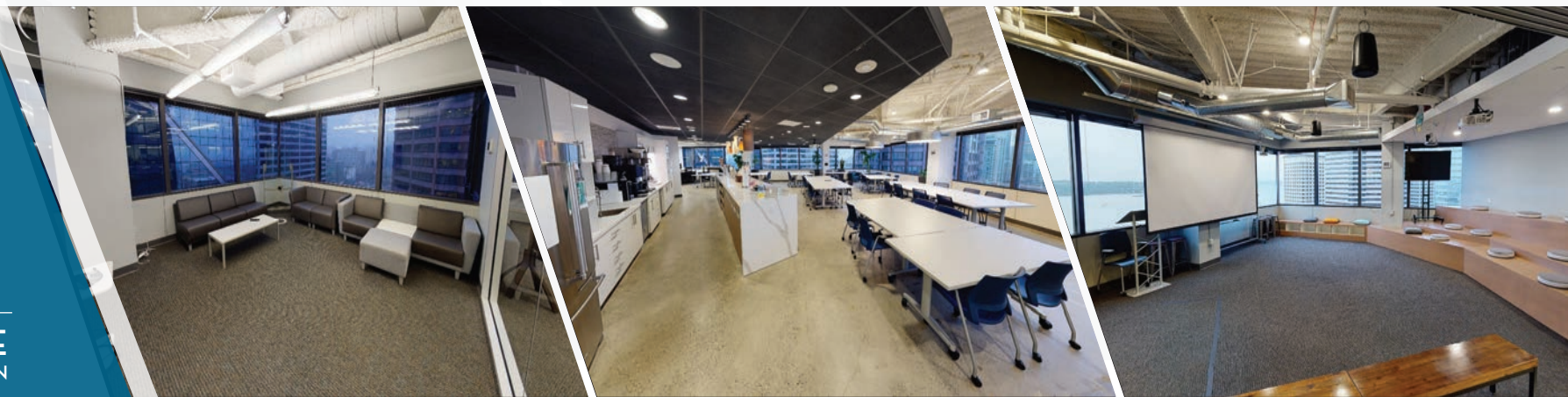
22,915 SF

Expiration: March 2030



701

5TH AVENUE
SEATTLE, WASHINGTON





701

5TH AVENUE
SEATTLE, WASHINGTON

NEWMARK

The information contained herein has been obtained from sources deemed reliable but has not been verified and no guarantee, warranty or representation, either express or implied, is made with respect to such information. Terms of sale or lease and availability are subject to change or withdrawal without notice. MP-022.01/24

CHARLIE FARRA
Senior Managing Director
206-999-2928
charlie.farra@nmrk.com

LEVI BUNDRANT
Associate
425-409-7405
levi.bundrant@nmrk.com

ED MAO
Associate
310-694-7191
edward.mao@nmrk.com