

# Truist Plaza @ Church Street Station

333 S. Garland Avenue, Orlando, FL 32801

## TOUR PROMOTION/BROKER INCENTIVES

8,700-47,100± RSF

CLASS A+ BUILDING WITH CLASS B RENTAL RATES



### Features

- **Tour Promotion: \$100 Gift Card**
- **1% Co-broker Commission Bonus\***
- Newest Class A+ mixed-use office & hotel tower in Downtown Orlando in 20± years (opened 2020)
- Ground floor retail & premier business class 180± room AC Hotel provides:
  - Conference center with 10,000± SF
  - 2-story indoor/outdoor dining & lounge
  - Fitness center
  - Valet car service (office & hotel)
- 2.5/1,000 RSF on-site parking ratio
- Adjacent SunRail stations
- Walking distance to Dr. Phillips Performing Arts Center, City Hall, Amway Center, Orlando City Soccer Stadium & many amenities
- Foxtail Coffee Café & Truist Bank branch on first floor
- Immediate access to I-4 & S.R. 408

**\*Please inquire with Broker for promotional qualifications**

Sublease Highlights	
<b>Size:</b>	8,700 - 47,100± RSF 15 <sup>th</sup> & 16 <sup>th</sup> Floors
<b>Rent:</b>	Negotiable
<b>Availability:</b>	Immediate
<b>Term:</b>	Flexible, 5-8± years
<b>Furnishings:</b>	16 <sup>th</sup> floor (75%)

For information, please contact:

**Jason Schrago**  
t 321-316-3017  
Jason.Schrago@nrmk.com

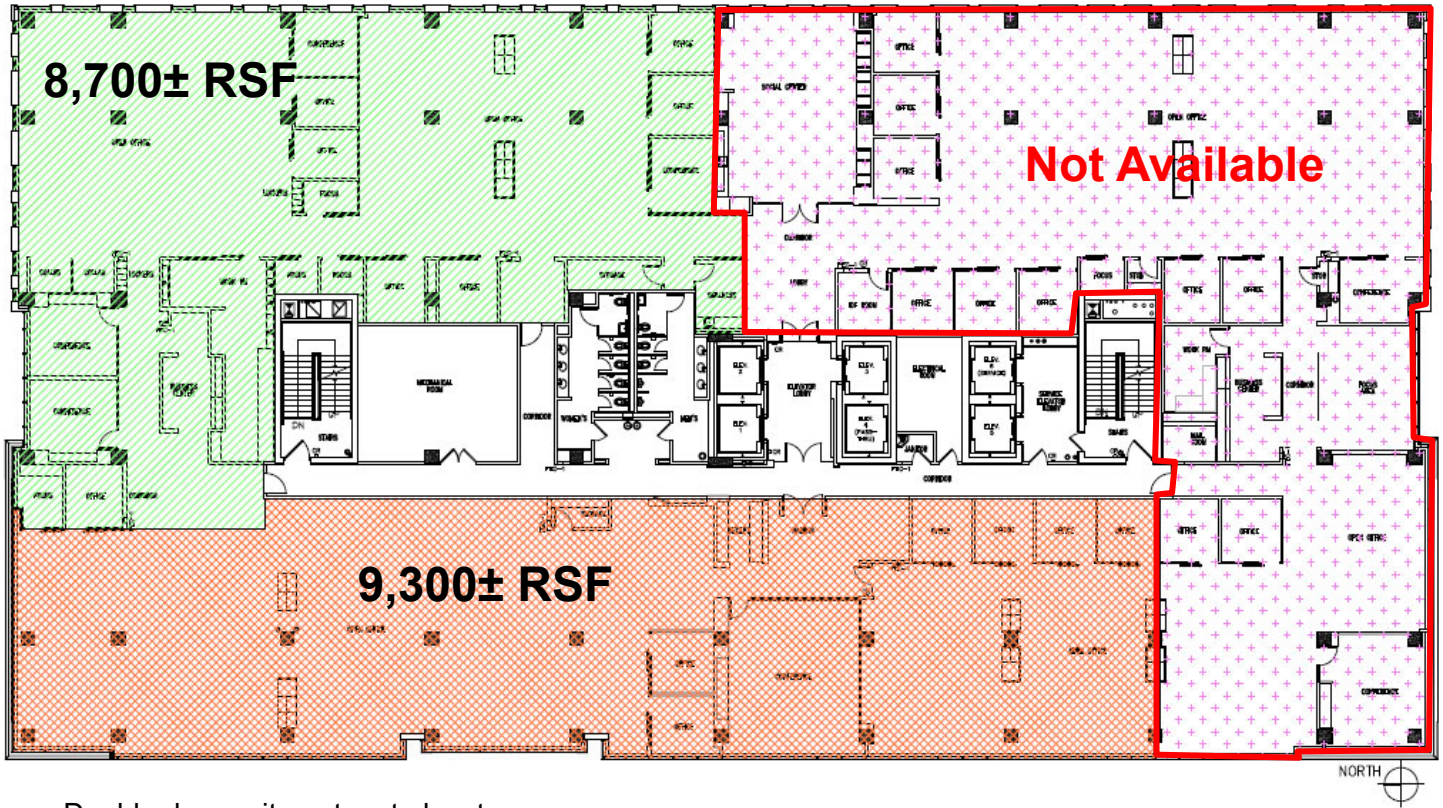
400 S. Park Avenue, Suite 220, Winter Park, FL 32789 | nrmk.com



The information contained herein has been obtained from sources deemed reliable but has not been verified and no guarantee, warranty or representation, either express or implied, is made with respect to such information. Terms of sale or lease and availability are subject to change or withdrawal without notice.

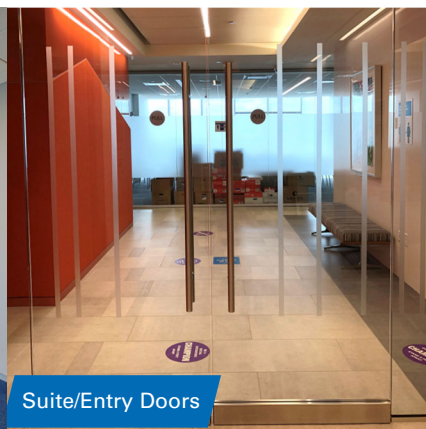
# FLOORPLAN & PHOTOS

15<sup>th</sup> Floor – 8,700 – 18,000± RSF



- Double door suite entry at elevator
- Good mix with private offices & workstations
- Excellent upper floor views

[Virtual Video Tour Link](#)

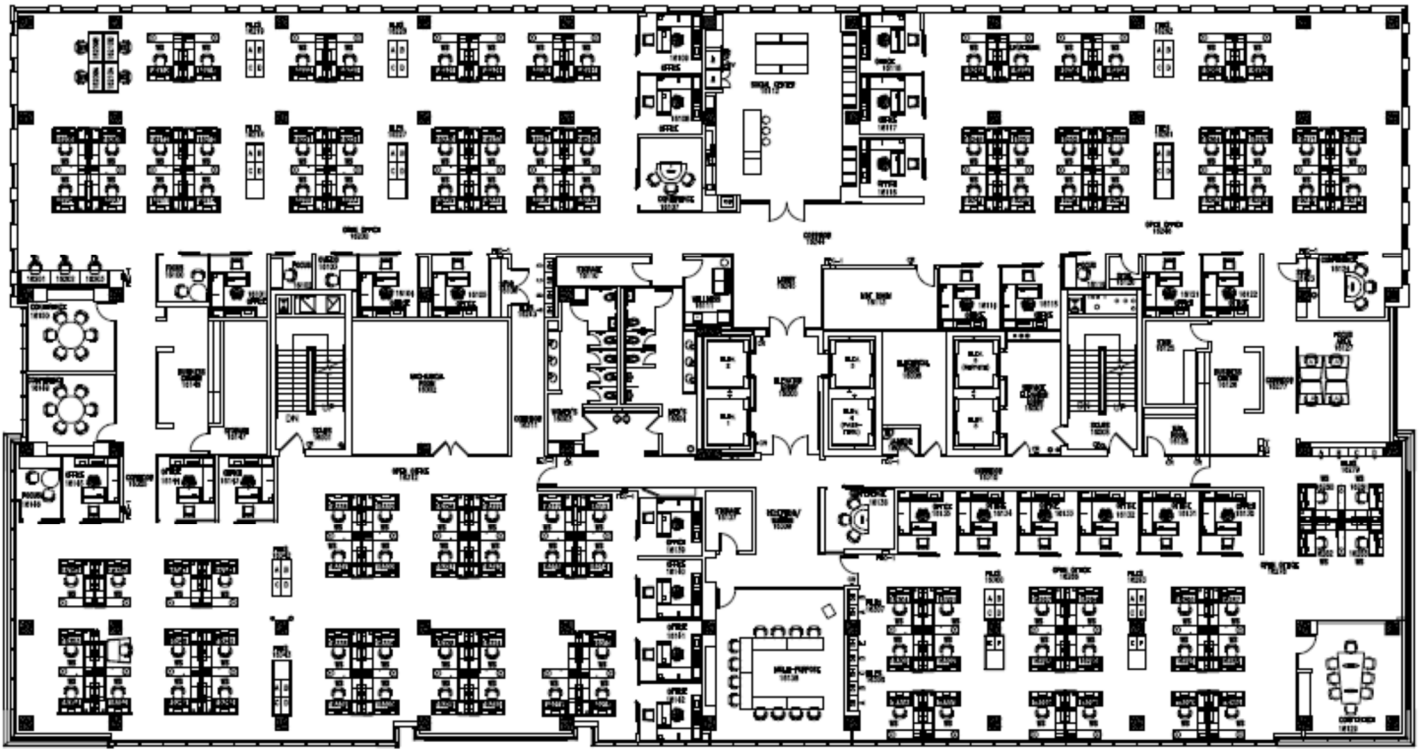


400 S. Park Avenue, Suite 220, Winter Park, FL 32789 | nmrk.com

The information contained herein has been obtained from sources deemed reliable but has not been verified and no guarantee, warranty or representation, either express or implied, is made with respect to such information. Terms of sale or lease and availability are subject to change or withdrawal without notice.

# FLOORPLAN & PHOTOS

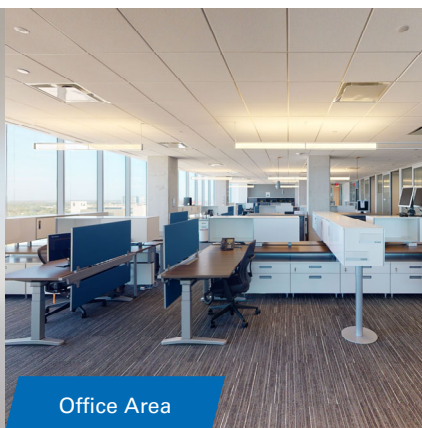
16<sup>th</sup> Floor – 29,100± RSF Furniture Plan



- 26-30± private offices/huddle rooms
- 6± conference rooms
- 116± open/creative workspaces
- Several collaborative areas, breakroom & shared spaces
- Furnishings (75%) available



Main Conference Room



Office Area



Breakroom

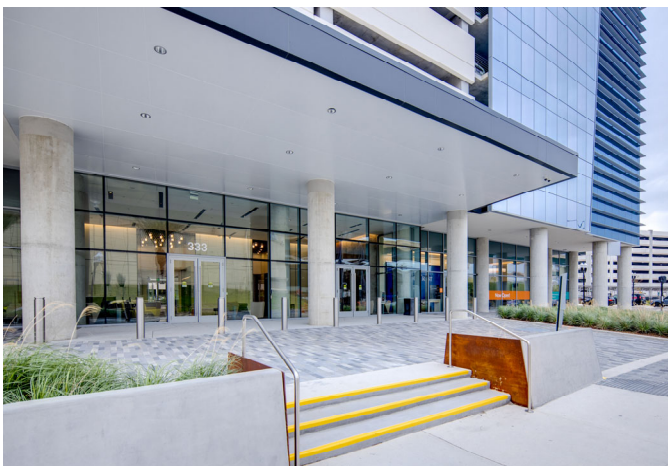
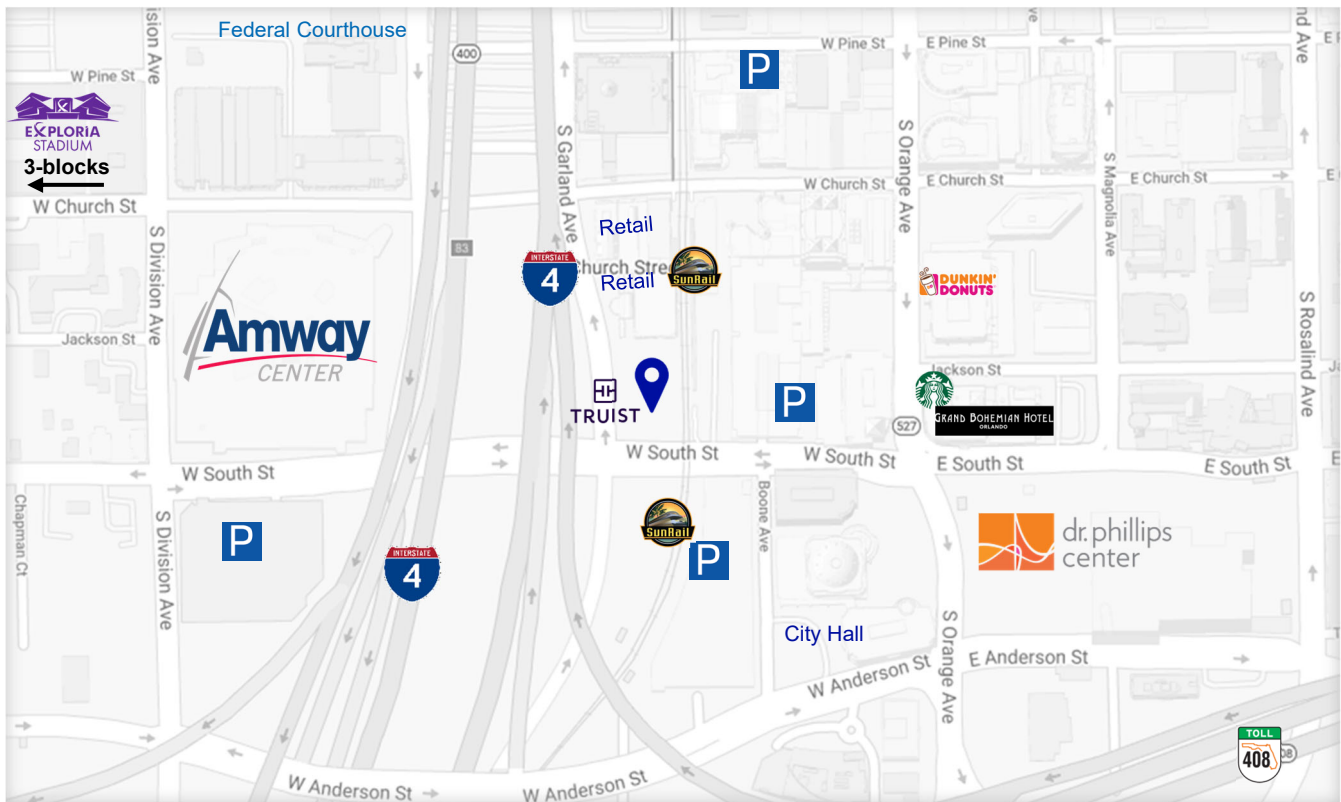


400 S. Park Avenue, Suite 220, Winter Park, FL 32789 | [nmrk.com](http://nmrk.com)

The information contained herein has been obtained from sources deemed reliable but has not been verified and no guarantee, warranty or representation, either express or implied, is made with respect to such information. Terms of sale or lease and availability are subject to change or withdrawal without notice.

## LOCATION MAP

# Truist Plaza @ Church Street Station



For information, please contact:

**Jason Schrago**

t 321-316-3017

Jason.Schrago@nrmk.com



400 S. Park Avenue, Suite 220, Winter Park, FL 32789 | [nrmk.com](http://nrmk.com)

**NEWMARK**

The information contained herein has been obtained from sources deemed reliable but has not been verified and no guarantee, warranty or representation, either express or implied, is made with respect to such information. Terms of sale or lease and availability are subject to change or withdrawal without notice.