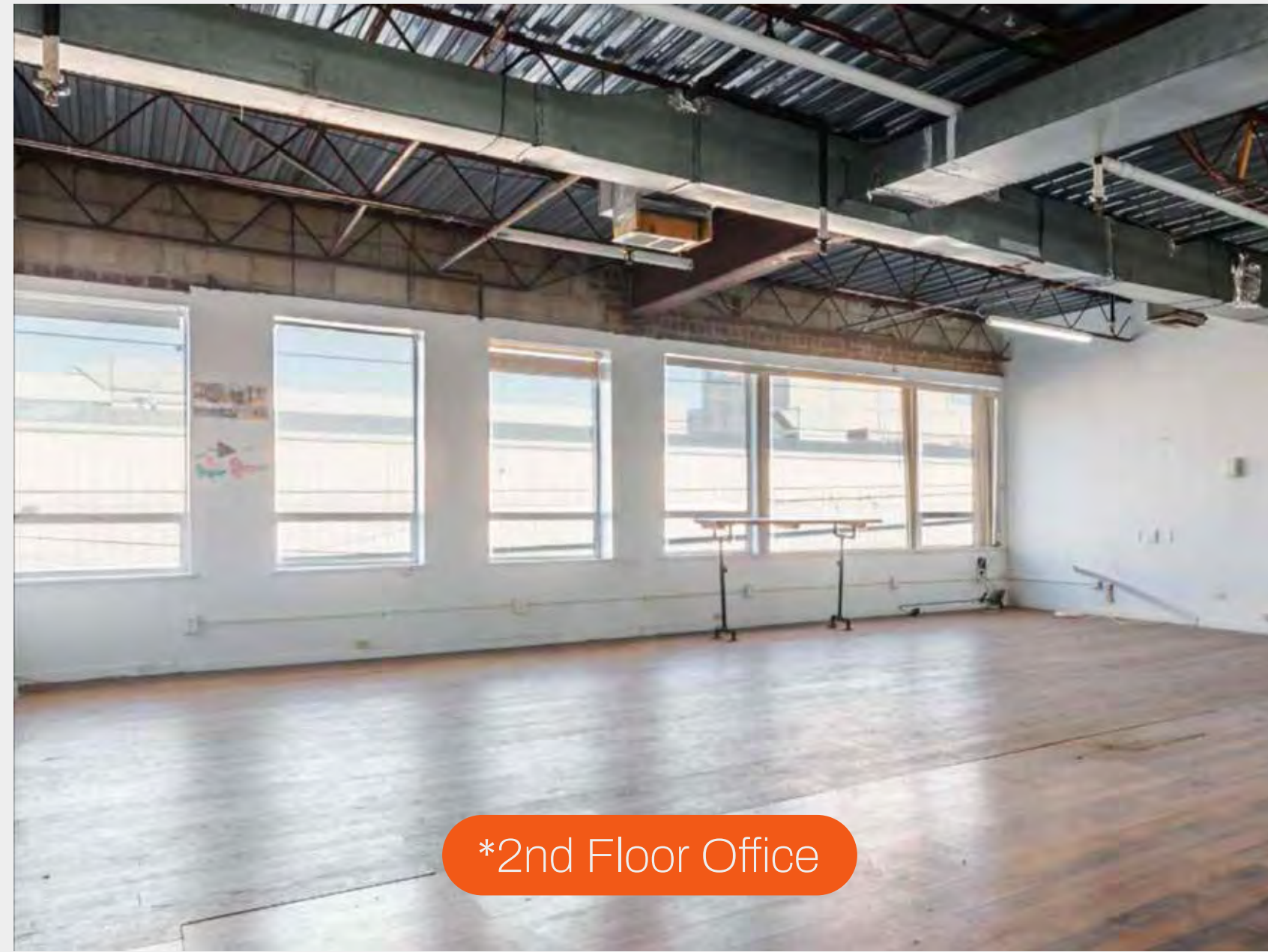


THE BLOCK

**EAST WILLIAMSBURG
BROOKLYN NEW YORK 11237**

218 Randolph Street Brooklyn, NY 11237, USA



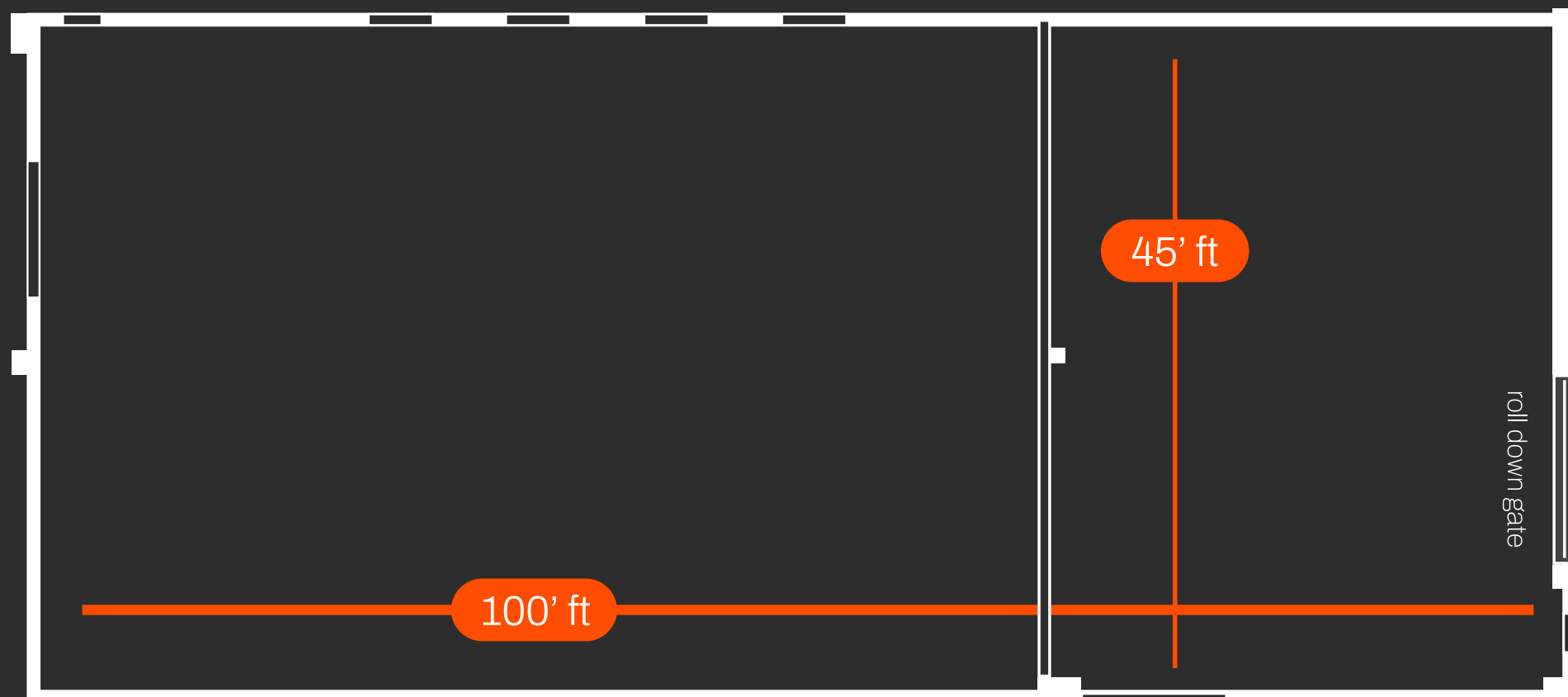
A new vision of production has brought a modern cohort of makers and creatives to The Block.

The Block establishes an inviting base for this range of people, businesses, and ideas to come together—fostering comfortable and collaborative interaction.

East Williamsburg retained its independence for almost two hundred years before officially becoming a part of the growing city of Brooklyn. Since its early days, the neighborhood has been defined by production — first from farms, then from factories.

Floor plans not to scale with one another*

Randolph Street



TWO LEVELS
1,575 SF OFFICE UPSTAIRS

Gardner Avenue

SPACE C THE BLOCK



INTERIOR

6,075 SF (NON-DIVISIBLE)

THE SPACE:

GROUND FLOOR: 4,500 SF

OFFICE: 1,575 SF

20' high ceiling heights from the slab to the underside of the roof for 2,925 sq ft of the warehouse

12' high ceiling heights from the slab to the underside of the roof for 1,575 sq ft of the office

12'10" height of drive in roll up gate /
12'3" width of drive in roll up gate

Open web joist on masonry wall type construction

750,000 BTU gas powered forced hot air blower

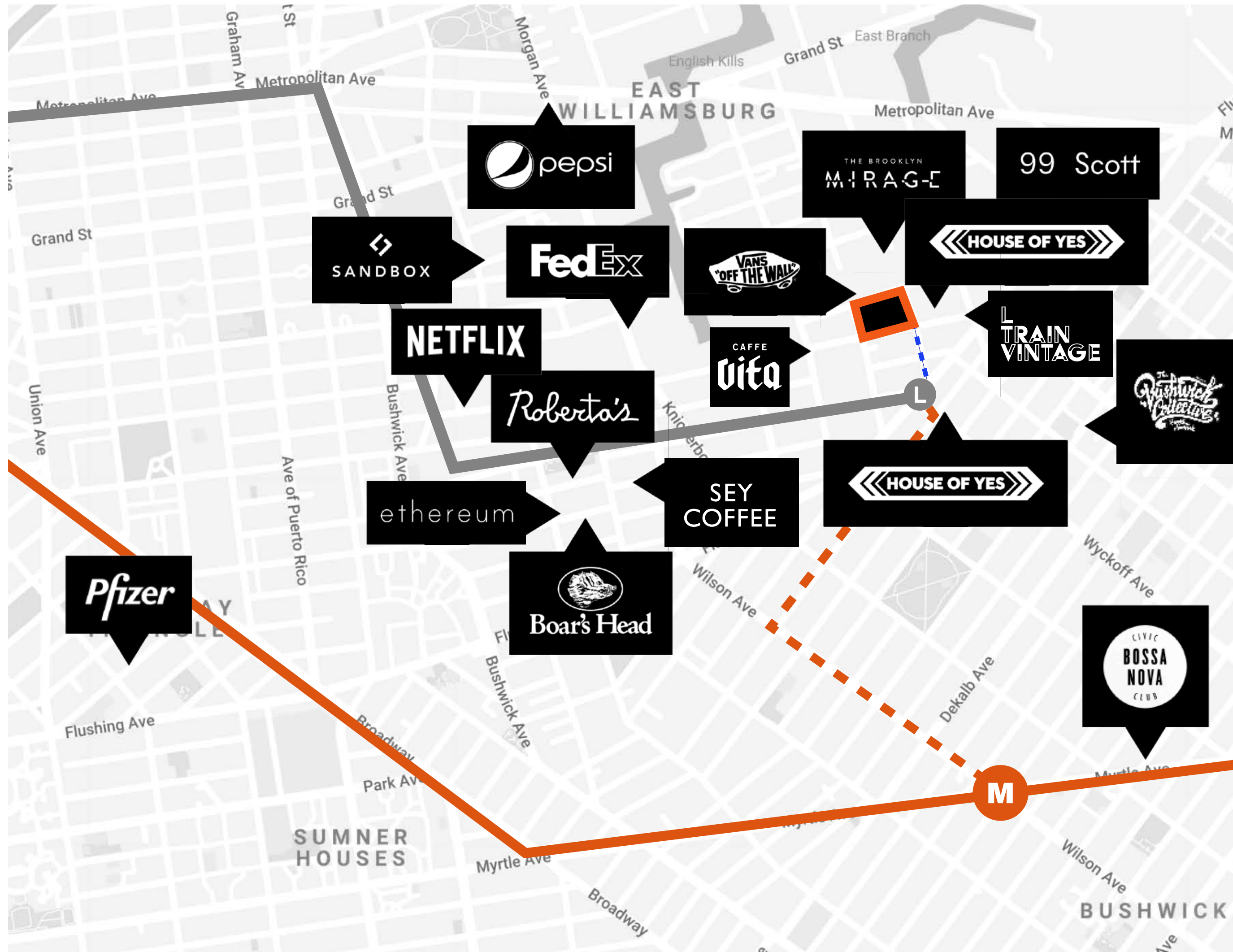
Well maintained steel framed structure

200 amps of 3 phase power

1 3/4 inch water line

2" gas line

Code compliant full coverage wet sprinkler system



5 Minute walk to Jefferson L train

15 minute ride to Union Square

Short walk to M train enhancing connectivity to Manhattan and Brooklyn.

Nearby access to the Brooklyn-Queens Expressway, facilitating ease of transportation and logistics.

Situated in East Williamsburg, a hub for creatives and startups, surrounded by a mix of residential, commercial, and entertainment venues.

The presence of Netflix Studio in the vicinity underscores the area's significance as a cultural and entertainment hub.

The neighborhood's commitment to green spaces and public art projects contributes to its desirability as a place to live and work, reflecting a strong community spirit.



WWW.555JOHNSONAVE.COM

THE BLOCK

218 RANDOLPH ST

EAST WILLIAMSBURG

BROOKLYN NEW YORK 11237

ERIC COHEN

ERIC@EBCCAP.COM
718 366 2119

SAMANTHA GLEIMER

SAMANTHA@EBCCAP.COM
718 366 2119



MALAGASSI



Casa ♥ Tua



NEW YORK
DISTILLING
COMPANY

EBC | CAPITAL ^{LLC}

Property Brochures © 2020 EBC Capital, LLC. All rights reserved. This information has been obtained from sources believed reliable, but has not been verified for accuracy or completeness. You should conduct a careful, independent investigation of the property and verify all information. Any reliance on this information is solely at your own risk. Images Photos herein are the property of their respective owners. Use of these images without the express written consent of the owner is prohibited. All renderings, color schemes, materials, floor plans, maps, written text and displays are artists' impressions only and cannot be regarded as representations of facts.