

FOR LEASE

±3,000 SF OFFICE

15210 NELSON AVE.
CITY OF INDUSTRY | CA



±3,000 SF
AVAILABLE



GATED
PARKING



605 & 60 FWY
ACCESS

FOR MORE INFORMATION, CONTACT:

LINDSAY PARK
ASSOCIATE VICE PRESIDENT
M: 213.222.5499
lpark@daumcommercial.com
CADRE #02178941

MOON LIM
EXECUTIVE VICE PRESIDENT
P: 213.308.2056
mlim@daumcommercial.com
CADRE #01903050

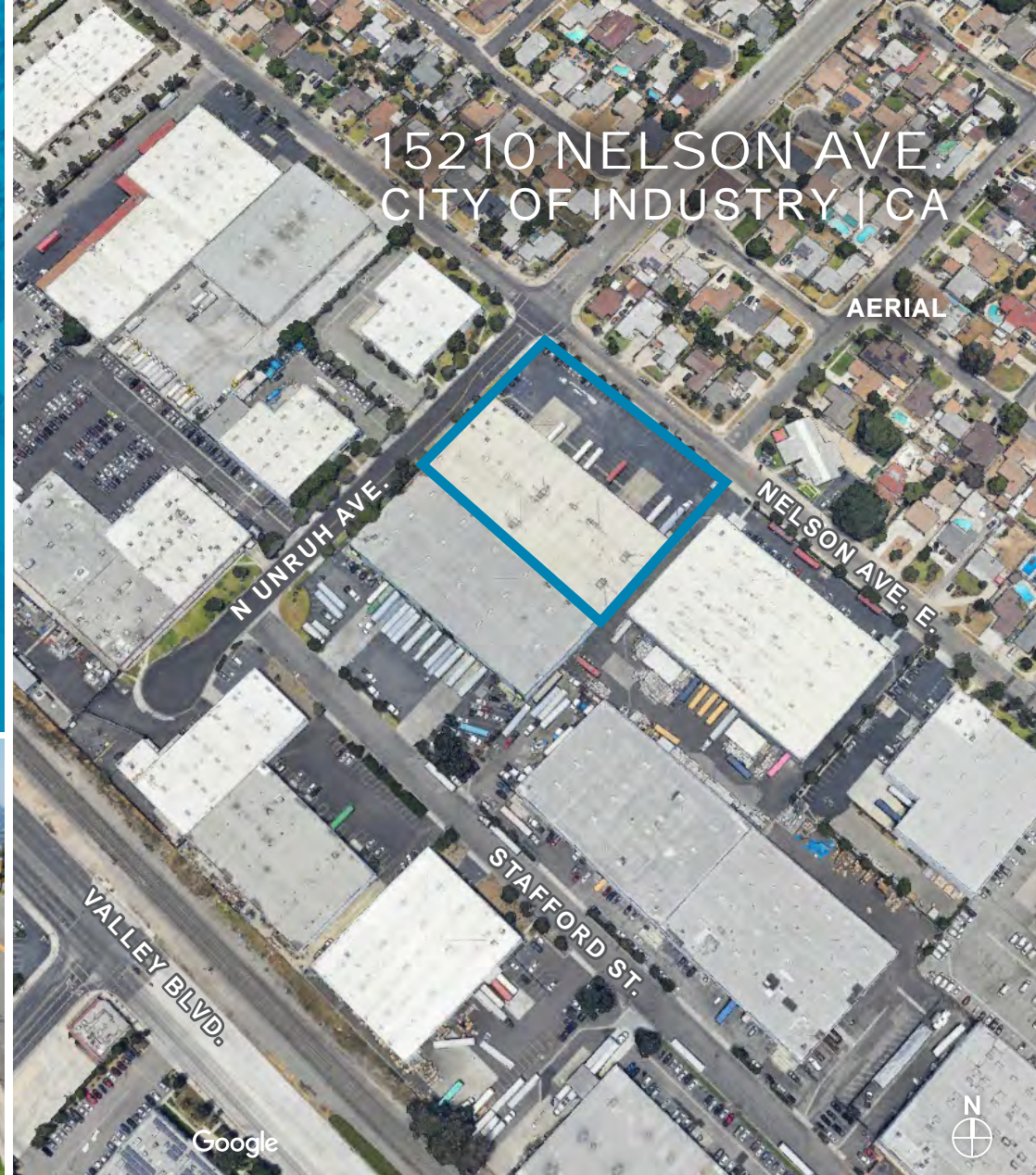
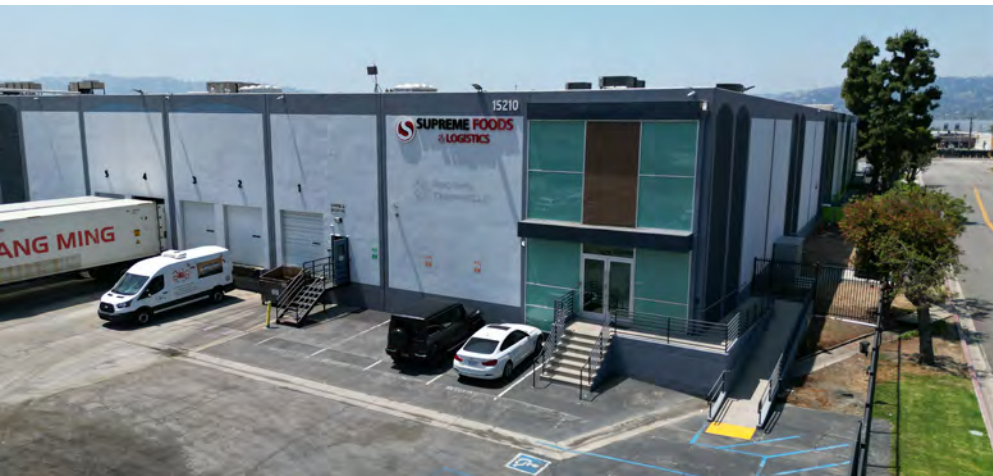
KEVIN SANDOVAL
ASSOCIATE VICE PRESIDENT
P: 562.576.1420
kevin.sandoval@daumcommercial.com
CADRE #01963831

FOR LEASE

±3,000 SF OFFICE

PROPERTY HIGHLIGHTS:

- Food Third Party Service Available
- Gated Parking
- Separate Access
- ±3,000 SF Office Space Divisible into ±1,000 SF and ±2,000 SF



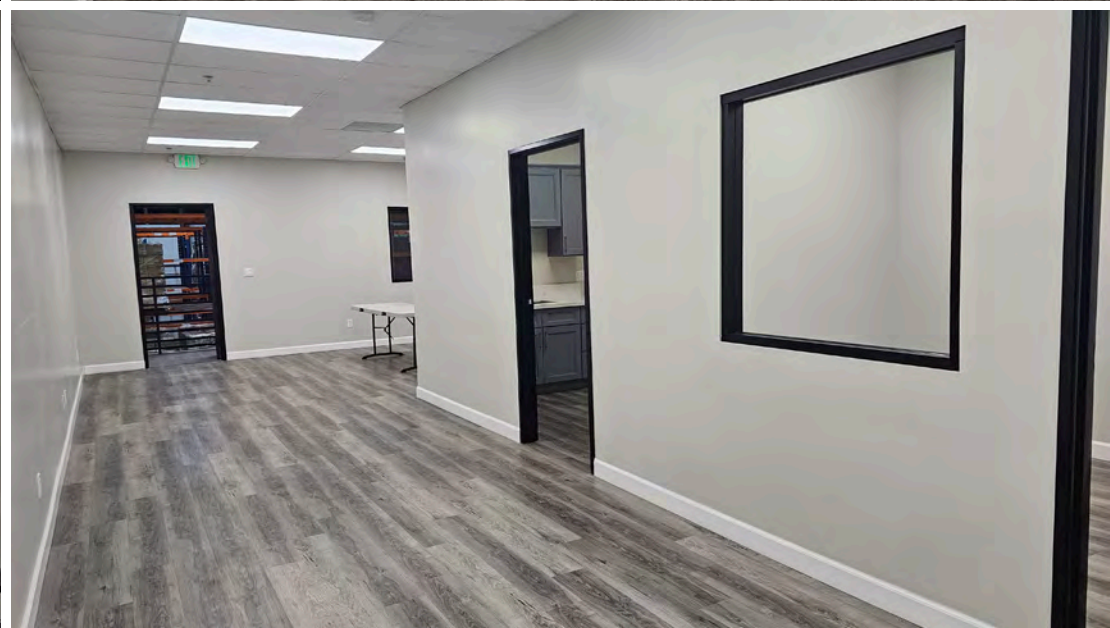
FOR MORE INFORMATION, CONTACT:

LINDSAY PARK
ASSOCIATE VICE PRESIDENT
M: 213.222.5499
lpark@daumcommercial.com
CADRE #02178941

MOON LIM
EXECUTIVE VICE PRESIDENT
P: 213.308.2056
mlim@daumcommercial.com
CADRE #01903050

KEVIN SANDOVAL
ASSOCIATE VICE PRESIDENT
P: 562.576.1420
kevin.sandoval@daumcommercial.com
CADRE #01963831

PROPERTY HIGHLIGHTS



FOR MORE INFORMATION, CONTACT:

LINDSAY PARK
ASSOCIATE VICE PRESIDENT
M: 213.222.5499
lpark@daumcommercial.com
CADRE #02178941

MOON LIM
EXECUTIVE VICE PRESIDENT
P: 213.308.2056
mlim@daumcommercial.com
CADRE #01903050

KEVIN SANDOVAL
ASSOCIATE VICE PRESIDENT
P: 562.576.1420
kevin.sandoval@daumcommercial.com
CADRE #01963831

PHOTOS



FOR MORE INFORMATION, CONTACT:

LINDSAY PARK
ASSOCIATE VICE PRESIDENT
M: 213.222.5499
lpark@daumcommercial.com
CADRE #02178941

MOON LIM
EXECUTIVE VICE PRESIDENT
P: 213.308.2056
mlim@daumcommercial.com
CADRE #01903050

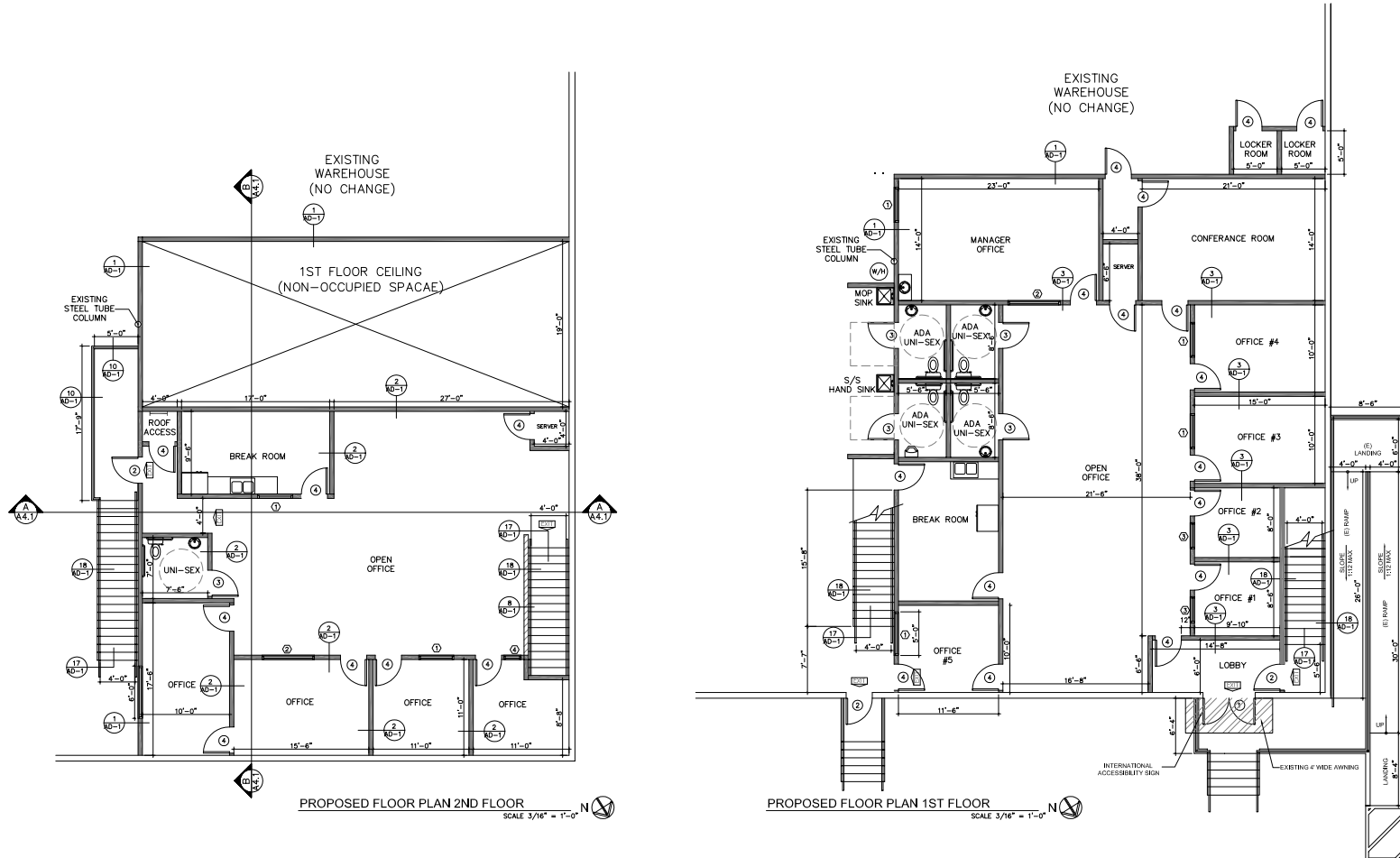
KEVIN SANDOVAL
ASSOCIATE VICE PRESIDENT
P: 562.576.1420
kevin.sandoval@daumcommercial.com
CADRE #01963831

PHOTOS

FOR LEASE

±3.000 SF OFFICE

15210 NELSON AVE.
CITY OF INDUSTRY | CA



*NOT TO SCALE

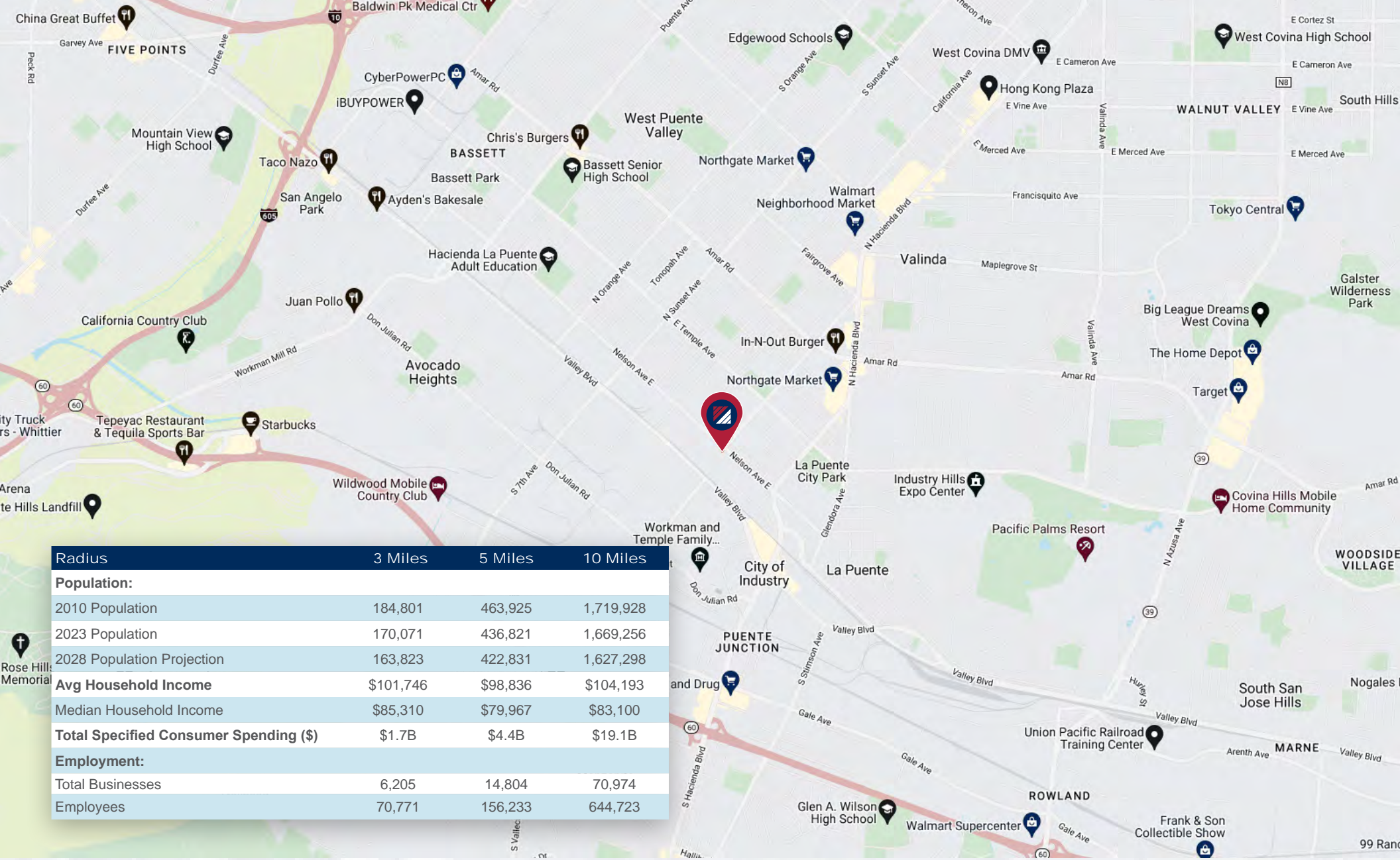
FOR MORE INFORMATION, CONTACT:

LINDSAY PARK
ASSOCIATE VICE PRESIDENT
M: 213.222.5499
lpark@daumcommercial.com
CADRE #02178941

MOON LIM
EXECUTIVE VICE PRESIDENT
P: 213.308.2056
mlim@daumcommercial.com
CADRE #01903050

KEVIN SANDOVAL
ASSOCIATE VICE PRESIDENT
P: 562.576.1420
kevin.sandoval@daumcommercial.com
CADRE #01963831

FLOOR PLAN



Radius	3 Miles	5 Miles	10 Miles
Population:			
2010 Population	184,801	463,925	1,719,928
2023 Population	170,071	436,821	1,669,256
2028 Population Projection	163,823	422,831	1,627,298
Avg Household Income			
Median Household Income	\$101,746	\$98,836	\$104,193
Total Specified Consumer Spending (\$)			
	\$1.7B	\$4.4B	\$19.1B
Employment:			
Total Businesses	6,205	14,804	70,974
Employees	70,771	156,233	644,723

FOR MORE INFORMATION, CONTACT:

LINDSAY PARK
 ASSOCIATE VICE PRESIDENT
 M: 213.222.5499
 lpark@daumcommercial.com
 CADRE #02178941

MOON LIM
 EXECUTIVE VICE PRESIDENT
 P: 213.308.2056
 mlim@daumcommercial.com
 CADRE #01903050

KEVIN SANDOVAL
 ASSOCIATE VICE PRESIDENT
 P: 562.576.1420
 kevin.sandoval@daumcommercial.com
 CADRE #01963831

LOCATION MAP

D/AQ Corp. #01129558. Maps Courtesy ©Google & ©Microsoft. Although all information is furnished regarding for sale, rental or financing is from sources deemed reliable, such information has not been verified and no express representation is made nor is any to be implied as to the accuracy thereof, and it is submitted subject to errors, omissions, changes of price, rental or other conditions, prior sale, lease or financing, or withdrawal without notice.

