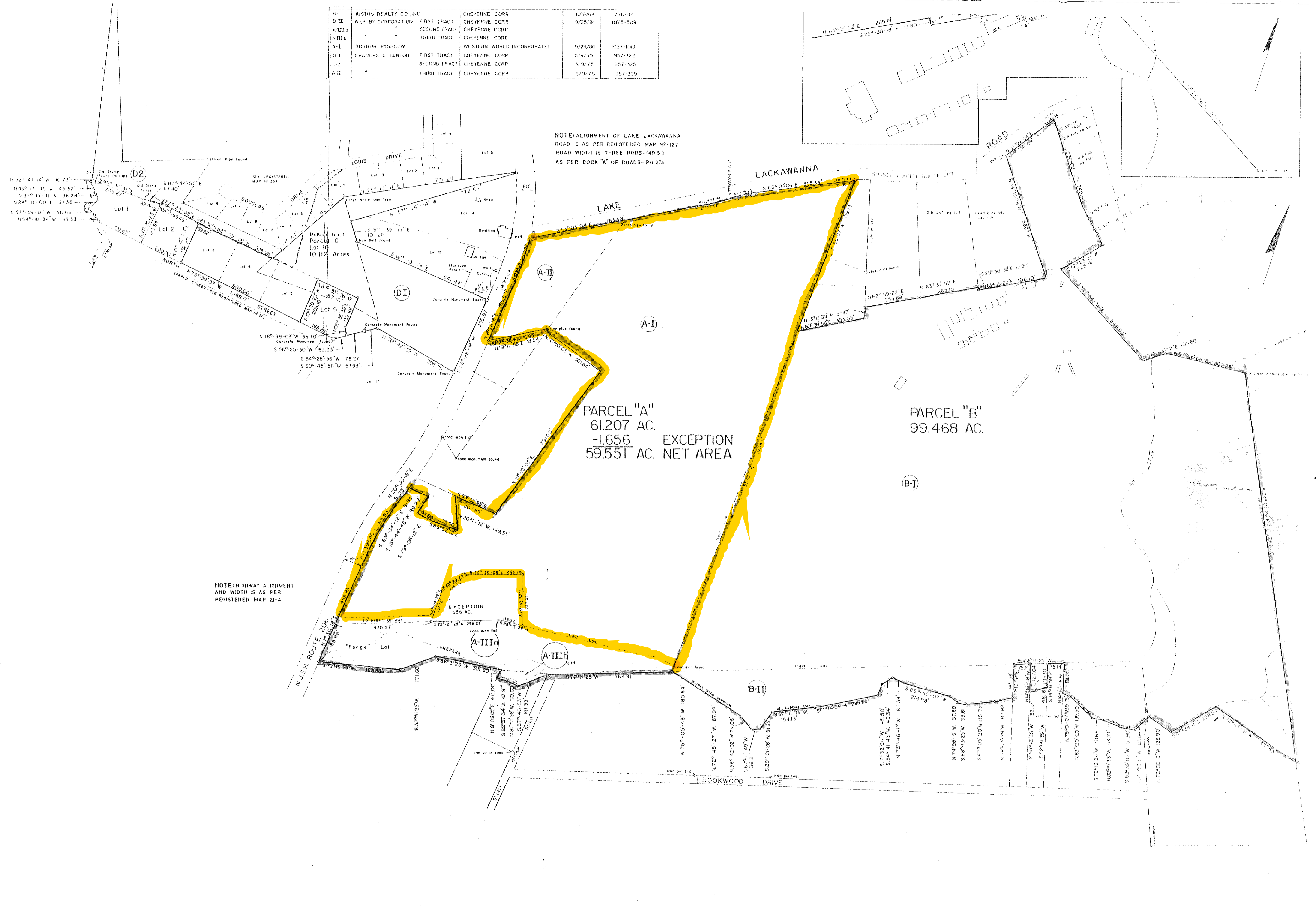


Filed in the Sussex County Clerk's Office as Registered Map No. 173, the northerly line of these lots runs along a line of possession, an old stone fence, as depicted on a survey of the Old Forge Lot shown on Registered Map No. 35.

Lots which front on Louis Drive and Douglas Drive are as depicted on Map of High Glen Estates, filed in the Sussex County Clerk's Office as Registered Map No. 264. The rear lines of these lots do not abut the stone wall and produce a gore, described generally in Book 951 of Deeds on page 325. This area has been designated as Lot 7 in Block 13 as shown on the Tax Map of the Township of Byram. The Tax Map also depicts the State of New Jersey owning abutting land to the west with said land overlapping a portion of lots 1, 2 and 7.

D-I	JUSTUS REALTY CO, INC	CHEYENNE CORP	6/29/64	776-44
B-II	WESLEY CORPORATION	CHEYENNE CORP	9/25/81	1075-609
A-IIIa	"	CHEYENNE CORP	"	"
A-IIIb	"	CHEYENNE CORP	"	"
A-I	ARTHUR PASHLOW	WESTERN WORLD INCORPORATED	9/29/80	1057-1009
D-I	FRANCIS C MINION	CHEYENNE CORP	5/9/75	957-322
D-2	"	CHEYENNE CORP	5/9/75	957-325
A-II	"	CHEYENNE CORP	5/9/75	957-328



NOTE: ALIGNMENT OF LAKE LACKAWANNA ROAD IS AS PER REGISTERED MAP NR-127 ROAD WIDTH IS THREE RODS (49.5') AS PER BOOK "A" OF ROADS- PG 231

NOTE: HIGHWAY ALIGNMENT AND WIDTH IS AS PER REGISTERED MAP 21-A

PARCEL "A"
61.207 AC.
-1.656 AC. EXCEPTION
59.551 AC. NET AREA

PARCEL "B"
99.468 AC.

SURVEY OF
WILD WEST CITY

BYRAM TWP SUSSEX COUNTY - NEW JERSEY
SCALE: 1" = 200' APRIL, 1983

ROBERT L. CAMPBELL ASSOCIATES
ENGINEERS AND SURVEYORS
NEWTON, NEW JERSEY

NOTE: NO CORNERS WERE SET AS PER THE WRITTEN INSTRUCTIONS OF HEATHER SUAREZ, ESQ.

CERTIFIED TO:
BYRAM TOWNE ASSOCIATES, INC.
COOPER REWRITER TITLE AGENCY, INC.
TRANSAMERICA TITLE INSURANCE COMPANY
AND WALTER, ROTHAK, BERKELEY & BROSAN PA.

Robert L. Campbell
Robert L. Campbell N.J.S. 13073