

310  
LEXINGTON  
AVENUE

## MEDICAL/PROFESSIONAL OFFICE CO-OP

Near East 37th Street  
For Lease or Sale

re | solution  
REAL ESTATE



### SPACE DETAILS:

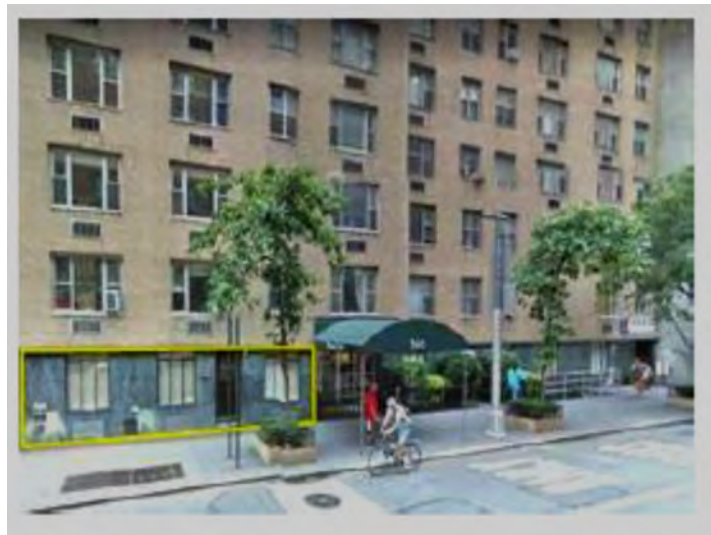
- Floor: Part Ground Floor
- Size: 1,369 RSF
- Private Street Level Entrance
- 2 Offices + 3 Exam Rooms
- Private Bathroom + Lots of Storage Areas
- Windows Facing Lexington Avenue

### FINANCIAL DETAILS:

- Maintenance & RE Taxes: \$4,025/month

### Building & Area Details:

- Full Service Multi Family Doorman Property
- Walking Distance to NYU and Grand Central Station



Jonata Dayan  
Executive Vice President, Commercial Condo/Co-op Sales  
212.519.2009 | 917.751.1067  
jdayan@rreny.com

Michael Adler  
Director/Leasing  
212.519.2046  
madler@rreny.com

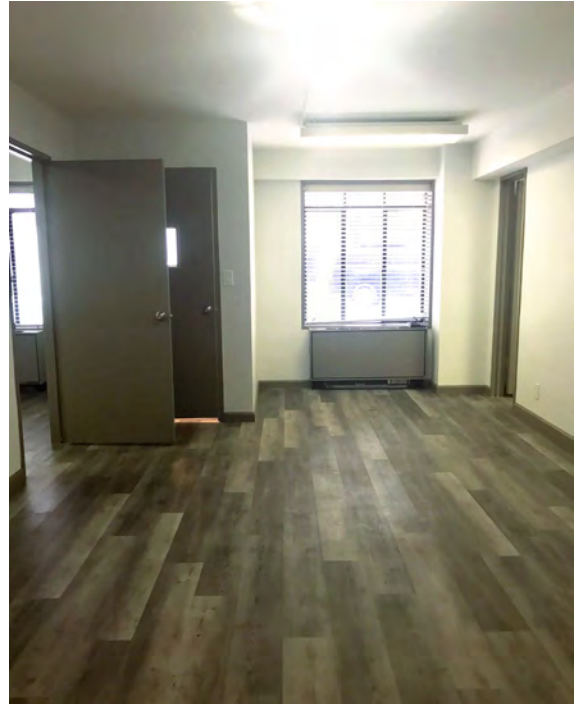
Although all information furnished regarding property for sale, rental, or financing is from sources deemed reliable, such information has not been verified and no express representation is made, nor is any to be implied as to the accuracy thereof, and it is submitted subject to errors, omissions, change of price, rental or other conditions, prior sale, lease or financing, or withdrawal without notice.



## MEDICAL/PROFESSIONAL OFFICE CO-OP

Near East 37th Street  
For Lease or Sale

**re** | solution  
REAL ESTATE



Jonata Dayan  
Executive Vice President, Commercial Condo/Co-op Sales  
212.519.2009 | 917.751.1067  
jdayan@rreny.com

Michael Adler  
Director/Leasing  
212.519.2046  
madler@rreny.com

Although all information furnished regarding property for sale, rental, or financing is from sources deemed reliable, such information has not been verified and no express representation is made, nor is any to be implied as to the accuracy thereof, and it is submitted subject to errors, omissions, change of price, rental or other conditions, prior sale, lease or financing, or withdrawal without notice.

310  
LEXINGTON  
AVENUE

## MEDICAL/PROFESSIONAL OFFICE CO-OP

Near East 37th Street  
For Lease or Sale

re|solution  
REAL ESTATE



Jonata Dayan  
Executive Vice President, Commercial Condo/Co-op Sales  
212.519.2009 | 917.751.1067  
jdayan@rreny.com

Michael Adler  
Director/Leasing  
212.519.2046  
madler@rreny.com

Although all information furnished regarding property for sale, rental, or financing is from sources deemed reliable, such information has not been verified and no express representation is made, nor is any to be implied as to the accuracy thereof, and it is submitted subject to errors, omissions, change of price, rental or other conditions, prior sale, lease or financing, or withdrawal without notice.