

For Lease

# 9980 IRVINE CENTER DR, STE 100

IRVINE, CA 92618



# *FURNISHED* OFFICE SUITE AVAILABLE

±2,350 SF office suite located in a campus setting property with ample surface lot parking

Turn-key and ready for immediate occupancy, workstations, and furniture included

Ground-floor suite with glass double-door entry

Three (3) private offices, conference room and kitchenette

Immediate access to I-405, I-5 & SR-133 freeways

Close proximity to numerous retail amenities and Irvine Spectrum Center

*9 MIN*

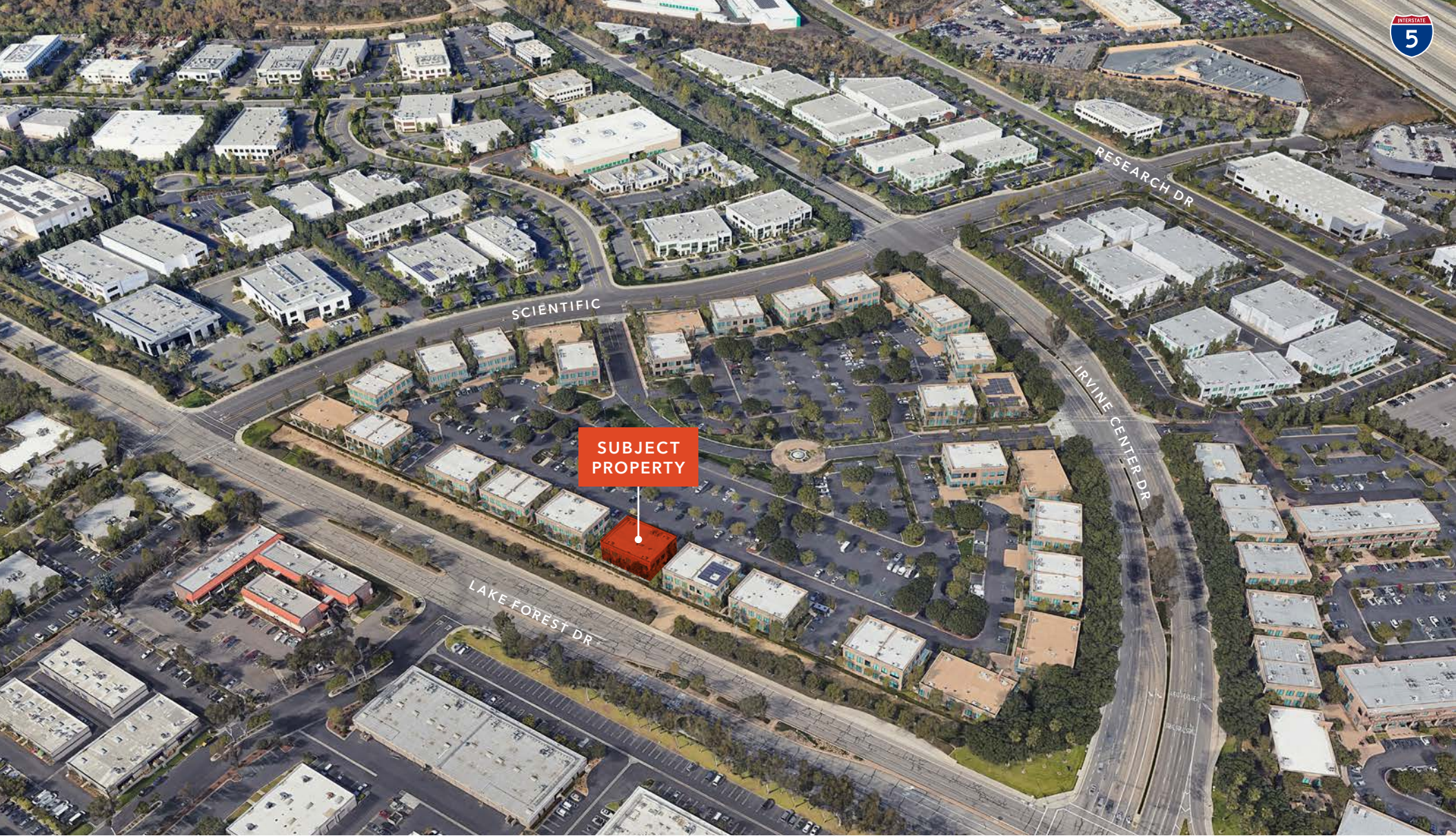
FROM IRVINE SPECTRUM

*15 MIN*

FROM JOHN WAYNE AIRPORT



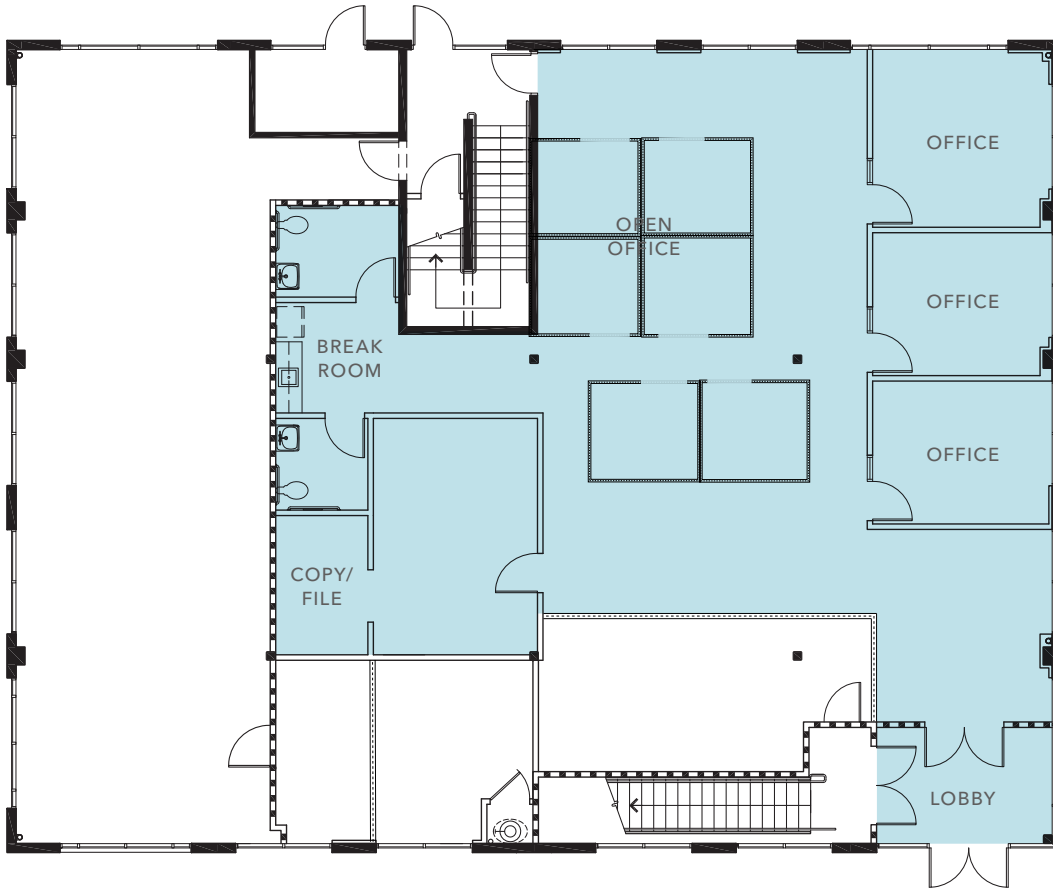
9980 IRVINE CENTER DR, STE 100



AVAILABLE FOR LEASE

KIDDER MATHEWS

# FLOOR PLAN



*±2,350 SF*

AVAILABLE

*NOW*

AVAILABLE



9980 IRVINE  
CENTER DR,  
STE 100

*Exclusively listed by*

**OLIVER TERNATE, SIOR**  
Senior Vice President, Shareholder  
949.557.5019  
oliver.ternate@kidder.com

LIC N° 01395278

**KIDDER.COM**

This information supplied herein is from sources we deem reliable. It is provided without any representation, warranty, or guarantee, expressed or implied as to its accuracy. Prospective Buyer or Tenant should conduct an independent investigation and verification of all matters deemed to be material, including, but not limited to, statements of income and expenses. Consult your attorney, accountant, or other professional advisor.

**km Kidder  
Mathews**