
PrestonBend

REAL ESTATE

FOR LEASE

1903 Doctors Hospital Drive, Bridgeport, Texas



OVERVIEW

- Total Building Size: 38,427 SF
- Lot Size: 2.009 AC
- Lease Rate: \$15 PSF + NNN
- Parking: 140 Spaces
- Suites Available:

#3 - 7,049 SF #21 - 14,171 SF
#31 - 2,687 SF #32 - 681 SF
#33 - 1,219 SF #35 - 1,474 SF
#36 - 3,526 SF

PROPERTY DETAILS

Medical Office Suites for Lease in Booming Wise County! This 3-story building offers a collective of available suite sizes and layouts in walk-in ready options or shell spaces that can be built-to-suit. The property has ample parking, great visibility, and easy access to Hwy. 380 and Hwy. 114. Contact Broker today to schedule a showing!

[Click here](#)
for floor plans, photos, and more details.



prestonbendre.com

Randy Jay,
Principal Broker
972.413.0375
randy@prestonbendre.com

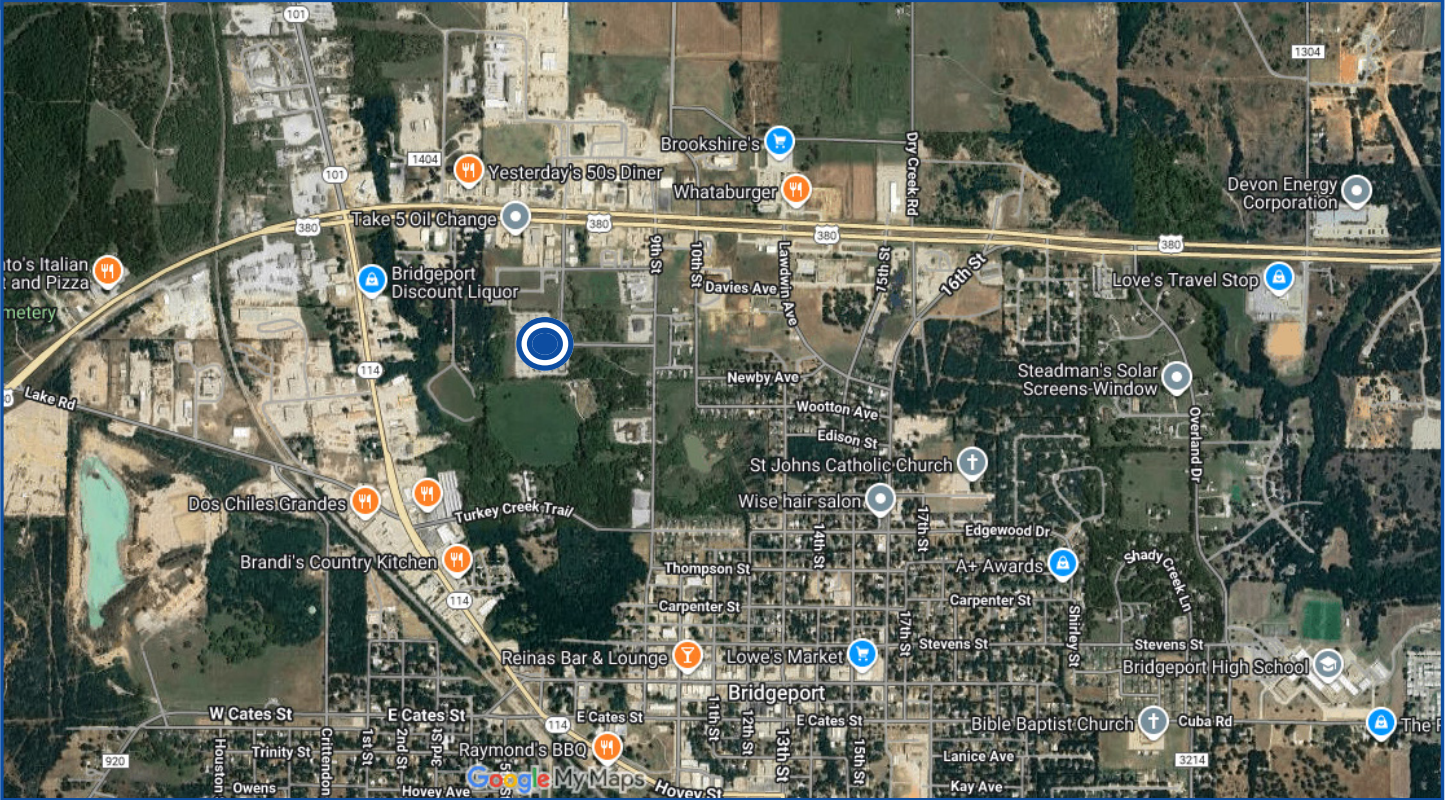
Ashley Lail,
Broker Associate
817.240.3775
ashley@prestonbendre.com

PrestonBend

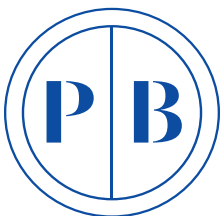
REAL ESTATE

SITE AERIAL

1903 Doctors Hospital Drive, Bridgeport, Texas



THE INFORMATION CONTAINED HEREIN HAS BEEN GIVEN TO US BY THE OWNER OF THE PROPERTY OR OTHER SOURCES WE DEEM RELIABLE. WE HAVE NO REASON TO DOUBT ITS ACCURACY, BUT WE DO NOT GUARANTEE IT. ALL INFORMATION SHOULD BE VERIFIED PRIOR TO PURCHASE OR LEASE.



prestonbendre.com

Randy Jay,
Principal Broker
972.413.0375
randy@prestonbendre.com

Ashley Lail,
Broker Associate
817.240.3775
ashley@prestonbendre.com