

# 655 ELLIS STREET

FOR LEASE | 2ND GENERATION STANDALONE RESTAURANT BUILDING

**TCP**  
**TOUCHSTONE**  
COMMERCIAL PARTNERS



**JARON ELIOPOULOS**

415.608.6336 | [jaron@tcpre.com](mailto:jaron@tcpre.com)

**CAMERON TU**

510.919.8193 | [cameron@tcpre.com](mailto:cameron@tcpre.com)

[WWW.TCPRE.COM](http://WWW.TCPRE.COM)



### PROPERTY SUMMARY

#### ADDRESS

655 Ellis Street, San Francisco, CA 94109

#### AVAILABLE SPACE

+/- 2,500 Square Feet

#### RENTAL RATE

\$6,950 / Month, Industrial Gross

#### AVAILABLE

Immediately

### BUILDING ATTRIBUTES

- + Type 1 Hood (12' 4")
- + 91 Occupancy
- + 250 AMPS, 3 Phase Power
- + Two (2) Restrooms
- + Furniture, Fixtures & Equipment Available For Tenant's Use
- + No Key Money
- + At The Base Of 95 Room Tourist Hotel







FRONT OF HOUSE







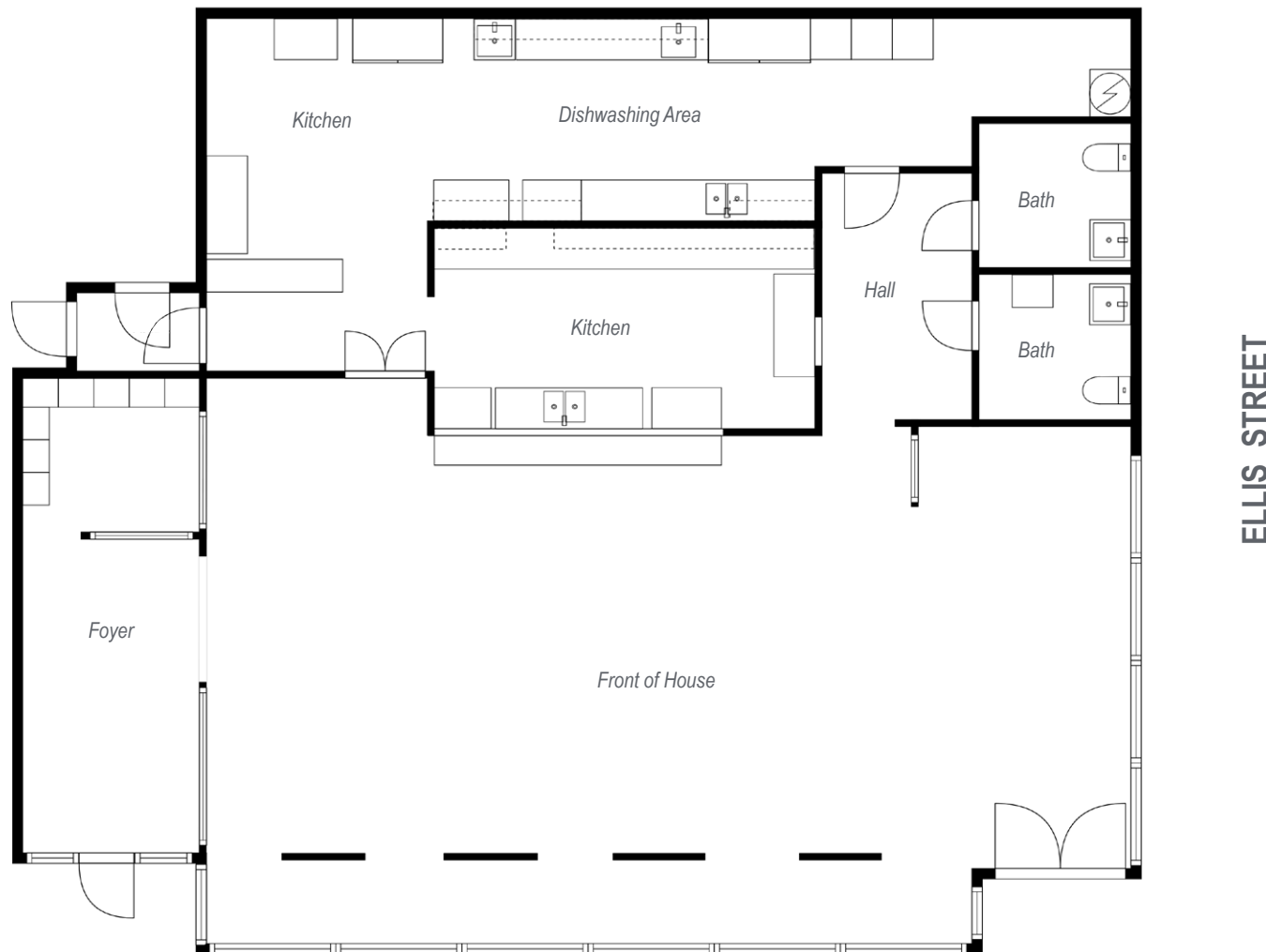
KITCHEN





FLOOR PLAN

+/- 2,500 Square Feet





### LOCATION OVERVIEW

Located in the Little Saigon neighborhood of San Francisco, the subject space is situated in a high density location.



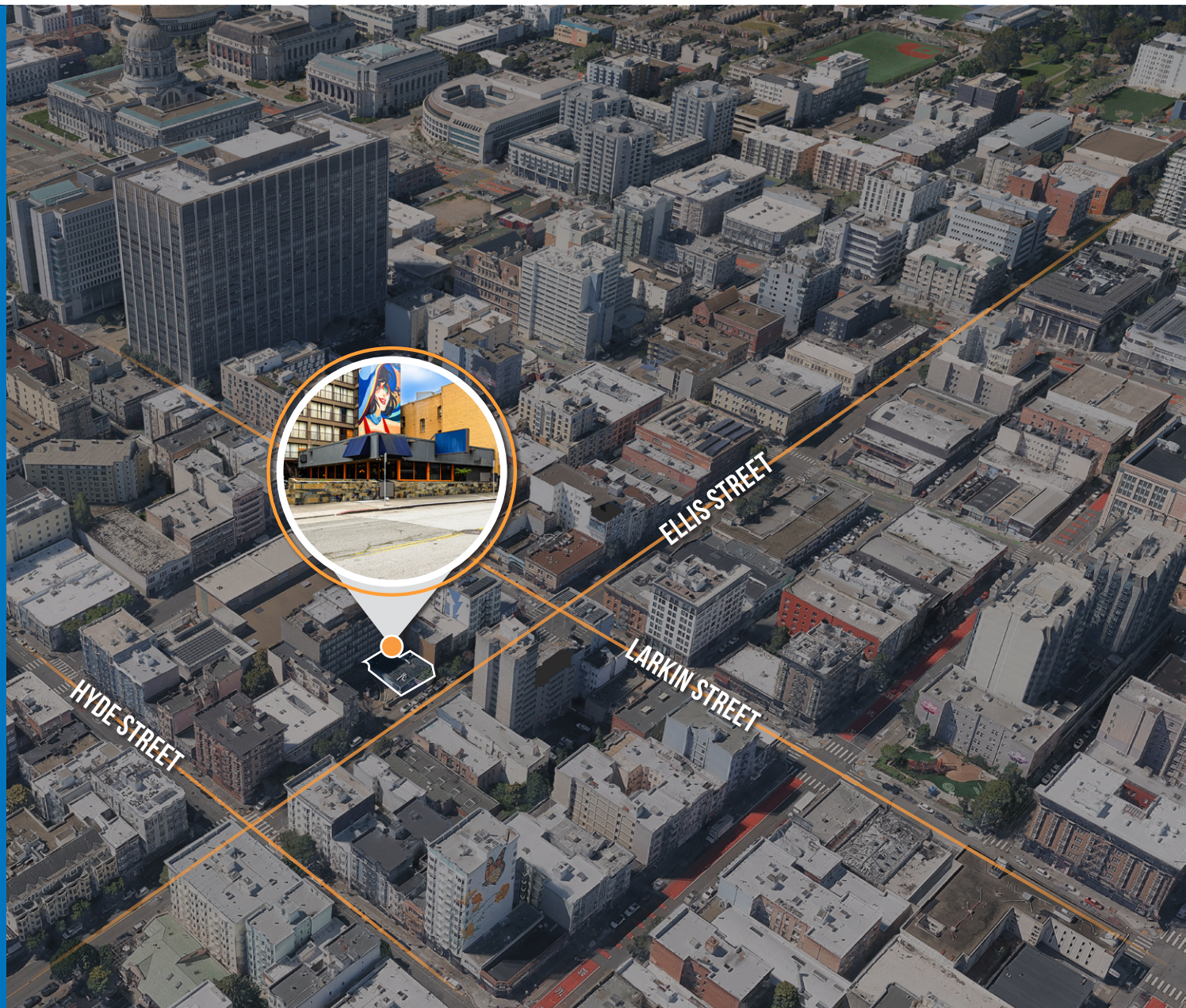
**03 MIN** to Eddy St Muni  
**12 MIN** to Jefferson Square  
**13 MIN** to Civic Center Bart



**04 MIN** to Civic Center  
**12 MIN** to Financial District  
**14 MIN** to Mission District



**08 MIN** to 80 On-Ramp  
**09 MIN** to 101 On-Ramp  
**10 MIN** to 280 On-Ramp



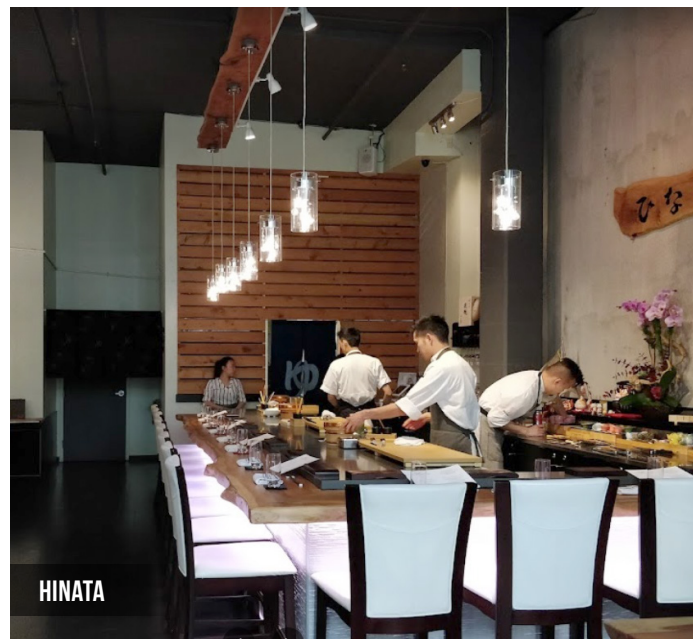


### NEARBY AMENITIES

- 1 Sungho
- 2 Hinata
- 3 Lers Ros
- 4 Outta Sight Pizza
- 5 Falafel City
- 6 Brenda's French Soul Food
- 7 Son and Garden
- 8 Zen Yai
- 9 City College of San Francisco
- 10 Round Table Pizza
- 11 Piccolo Italia
- 12 Music Exchange Piano Store
- 13 Tesla
- 14 Land Rover San Francisco
- 15 Sutter Health - CPMC/PAMF
- 16 Saigon Sandwich
- 17 Black Cat Jazz Supper Club
- 18 Van Ness Market
- 19 Salty's
- 20 Pho 2000
- 21 Emergency Dentist SF
- 22 Unexpected Era Cafe
- 23 Pomeroy Bar & Grill
- 24 Gladstone Market
- 25 Metro by T-Mobile
- 26 SF Federal Credit Union
- 27 Sam's Bakery
- 28 Bread & Butter Market & Deli
- 29 Great American Music Hall
- 30 Ember Grill









655 ELLIS STREET



Corp. Lic. 01112906  
www.tcpre.com

**JARON ELIOPOULOS** DRE # 01975155  
415.608.6336 | [jaron@tcpre.com](mailto:jaron@tcpre.com)

**CAMERON TU** DRE # 02100436  
510.919.8193 | [cameron@tcpre.com](mailto:cameron@tcpre.com)

This document has been prepared by Touchstone Commercial Partners for advertising and general information only. Touchstone Commercial Partners makes no guarantees, representations or warranties of any kind, expressed or implied, regarding the information including, but not limited to, warranties of content, accuracy and reliability. Any interested party should undertake their own inquiries as to the accuracy of the information. Touchstone Commercial Partners excludes unequivocally all inferred or implied terms, conditions and warranties arising out of this document and excludes all liability for loss and damages arising there from. This publication is the copyrighted property of Touchstone Commercial Partners and/or its licensor(s). ©2026. All rights reserved.