

FOR SUBLEASE

515 SOUTH FLOWER STREET

PRIME DOWNTOWN LOS ANGELES CLASS A OFFICE SPACE



LOCATION 515 South Flower Street, Los Angeles, CA 90071

AVAILABLE SPACE Suite 1220 consisting of ±2,611 rentable square feet of office space.

RENTAL RATE \$3.50 per square foot, per month, full service gross

LEASE EXPIRATION Through September 30, 2027

- FEATURES**
- » Class A office space with high-end finishes, an abundance of natural light, and incredible views of the city
 - » Three [3] window offices, large conference room, kitchenette, reception area, lounge area, and storage
 - » Can potentially be delivered fully furnished
 - » Parking available at current building rates
 - » Located one block from 110 freeway on-ramp/off-ramp

CONTACT **JEFFREY M. PICKETT**

Executive Vice President | pickett@westmac.com | (424) 832-5306 | DRE #01828924

2024 WESTMAC Commercial Brokerage Company. All Rights Reserved. WESTMAC Commercial Brokerage fully supports the principles of the Equal Opportunity Act. WESTMAC Commercial Brokerage Company and the WESTMAC Commercial Brokerage Company logo are registered service marks owned by WESTMAC Commercial Brokerage Company and may not be reproduced by any means or in any form whatsoever without written permission.

WESTMAC Commercial Brokerage Company

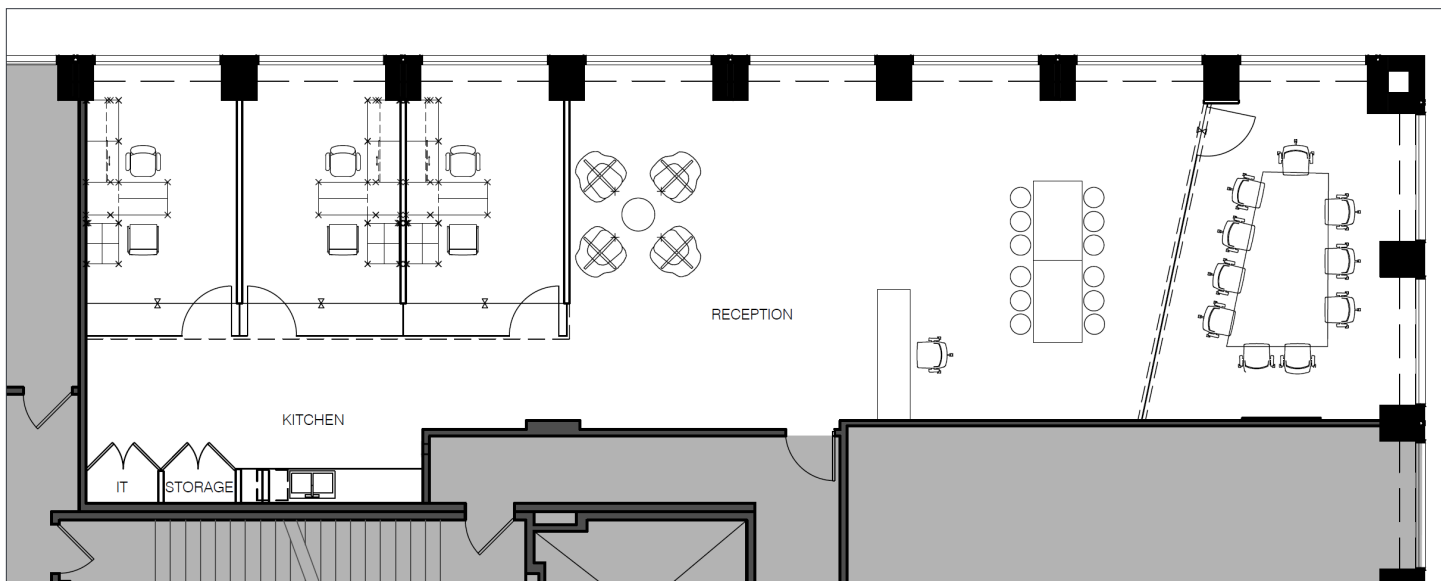
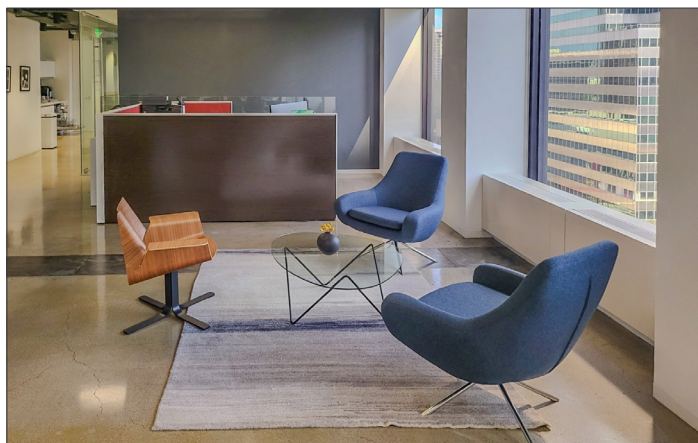
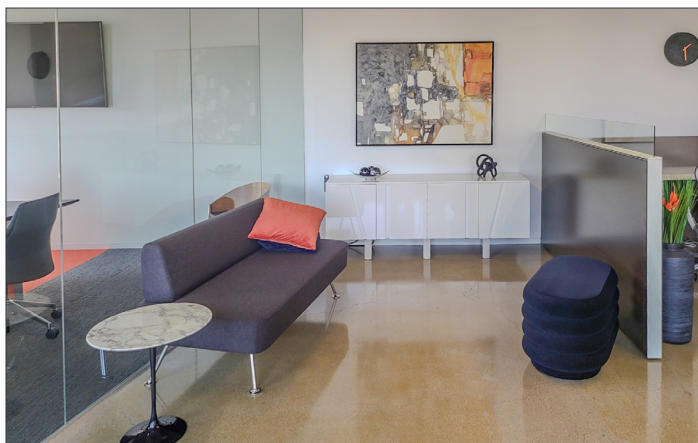
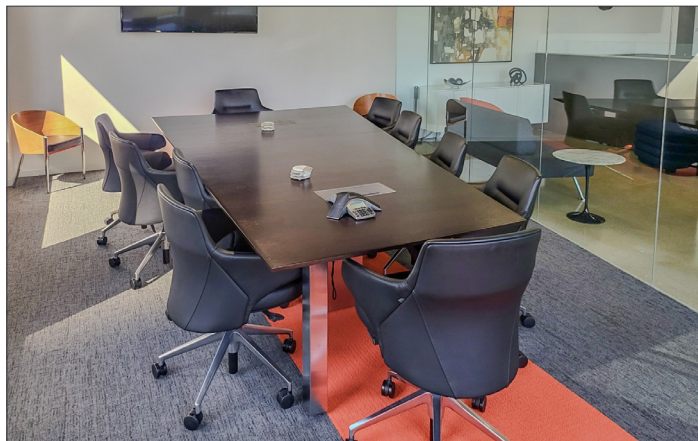
1515 S Sepulveda Boulevard, Los Angeles, CA 90025 | Company DRE #01096973 | www.westmac.com

WESTMAC

FOR SUBLEASE

515 SOUTH FLOWER STREET

PRIME DOWNTOWN LOS ANGELES CLASS A OFFICE SPACE



The above information while not guaranteed has been secured from sources we believe to be reliable. We obtained the information contained in this memorandum from sources we believe to be reliable. However, we have not verified its accuracy and make no guarantee, warranty or representation about it. It is submitted subject to the possibility of errors, omissions, change of price, rental or other conditions, prior sale, lease or financing or withdrawal without notice. We include projections, opinions, assumptions or estimates for example only, and they may not represent current or future performance of the property. You and your tax and legal advisors should conduct your own investigation of the property and transaction.

WESTMAC Commercial Brokerage Company

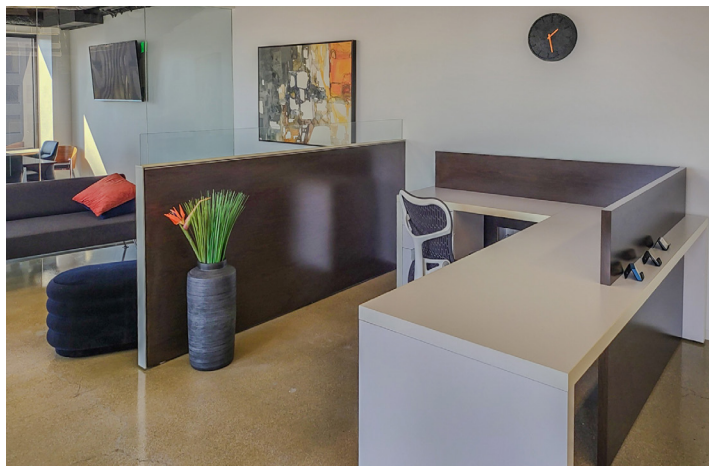
1515 S Sepulveda Boulevard, Los Angeles, CA 90025 | Company DRE #01096973 | www.westmac.com

WESTMAC

FOR SUBLEASE

515 SOUTH FLOWER STREET

PRIME DOWNTOWN LOS ANGELES CLASS A OFFICE SPACE



CONTACT:

JEFFREY M. PICKETT | Executive Vice President
pickett@westmac.com | (424) 832-5306 | DRE #01828924

2024 WESTMAC Commercial Brokerage Company. All Rights Reserved. WESTMAC Commercial Brokerage fully supports the principles of the Equal Opportunity Act. WESTMAC Commercial Brokerage Company and the WESTMAC Commercial Brokerage Company logo are registered service marks owned by WESTMAC Commercial Brokerage Company and may not be reproduced by any means or in any form whatsoever without written permission.

WESTMAC Commercial Brokerage Company

1515 S Sepulveda Boulevard, Los Angeles, CA 90025 | Company DRE #01096973 | www.westmac.com

WESTMAC