

For Lease

// **1405 W HALF MOON RD**

Colbert, WA 99005



// PRESENTED BY:

**RYAN OBERG**

COMMERCIAL LEASING & SALES BROKER

509.990.8423

RYAN.OBERG@G-B.COM





# // PROPERTY SUMMARY



## PROPERTY DESCRIPTION

Introducing an exceptional real estate opportunity in Colbert, WA! Located at 1405 W Half Moon Rd, this property offers a total of 10,600 square feet of prime space for lease, perfect for businesses looking to establish or expand their presence in the area. The property features three distinct buildings: a striking two-story red building comprising 7,200 square feet, a charming green building with 1,600 square feet and a convenient carport, and a stylish blue building offering 1,800 square feet of space. With a variety of options to suit different business needs, this property provides a versatile and attractive setting for a range of commercial ventures. Don't miss out on this opportunity to elevate your business in a prominent location!

SPACES	LEASE RATE	SPACE SIZE
Red Building	\$12/sf/yr + NNN	7,200 SF
Blue Building	\$12/sf/yr + NNN	1,800 SF
Green Building	\$12/sf/yr + NNN	1,600 SF

## PROPERTY FEATURES

- NNN Lease
- 9.44 acres
- Zoning: Small Tract Agriculture
- Fenced Area
- Easy Ingress & Egress

// PRESENTED BY:

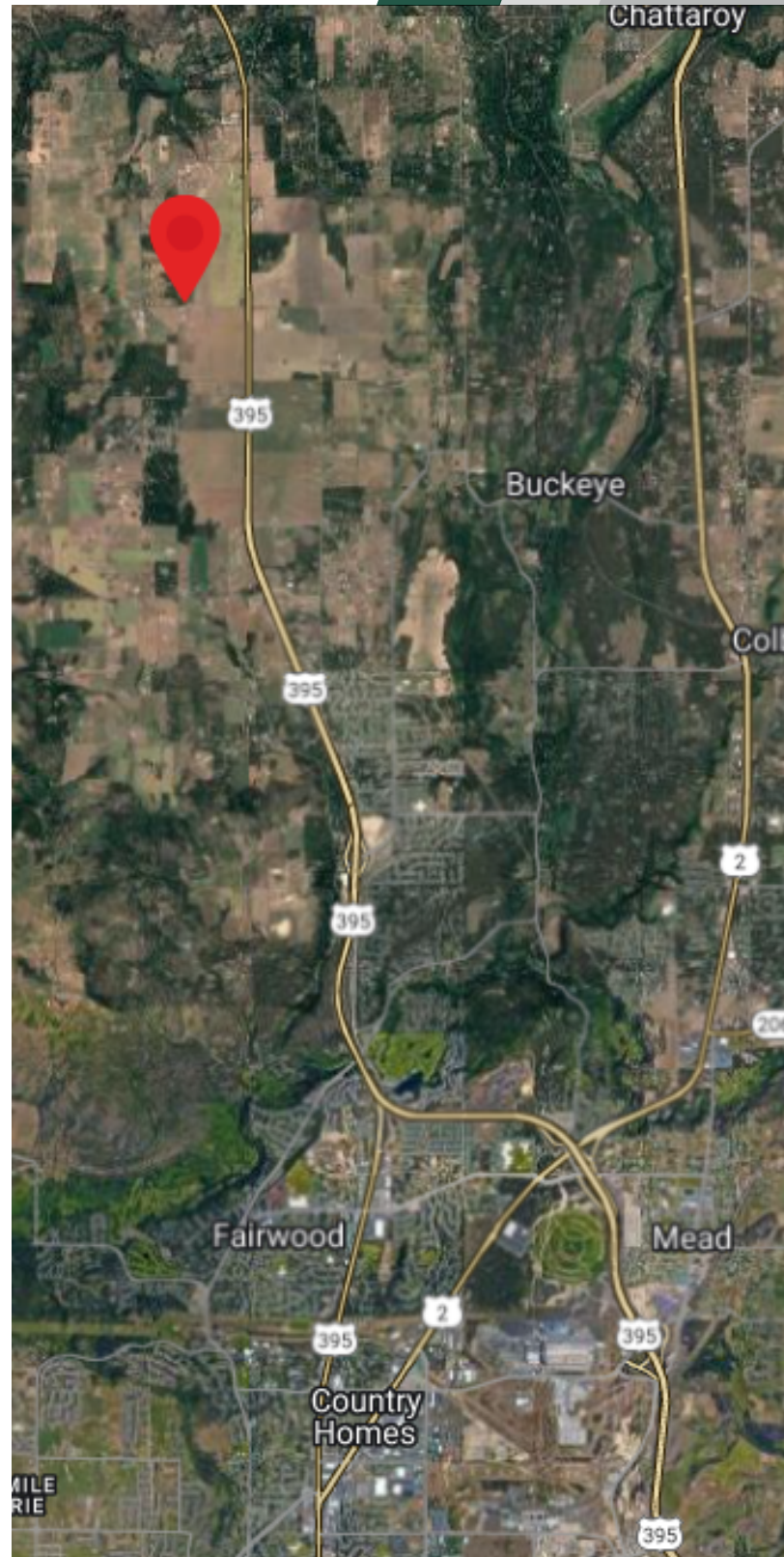
**RYAN OBERG**  
COMMERCIAL LEASING & SALES BROKER  
509.990.8423  
RYAN.OBERG@G-B.COM





1405 W Half Moon Rd // Colbert, WA 99005

## // ADDITIONAL PHOTOS



// PRESENTED BY:

**RYAN OBERG**

COMMERCIAL LEASING & SALES BROKER

509.990.8423

RYAN.OBERG@G-B.COM

