



# MACON

INTERSTATE BUSINESS PARK



**AVAILABLE FOR LEASE - ONLY ONE 30,900 SF UNIT REMAINS!**  
**2600 Weaver Road | Macon, Georgia**

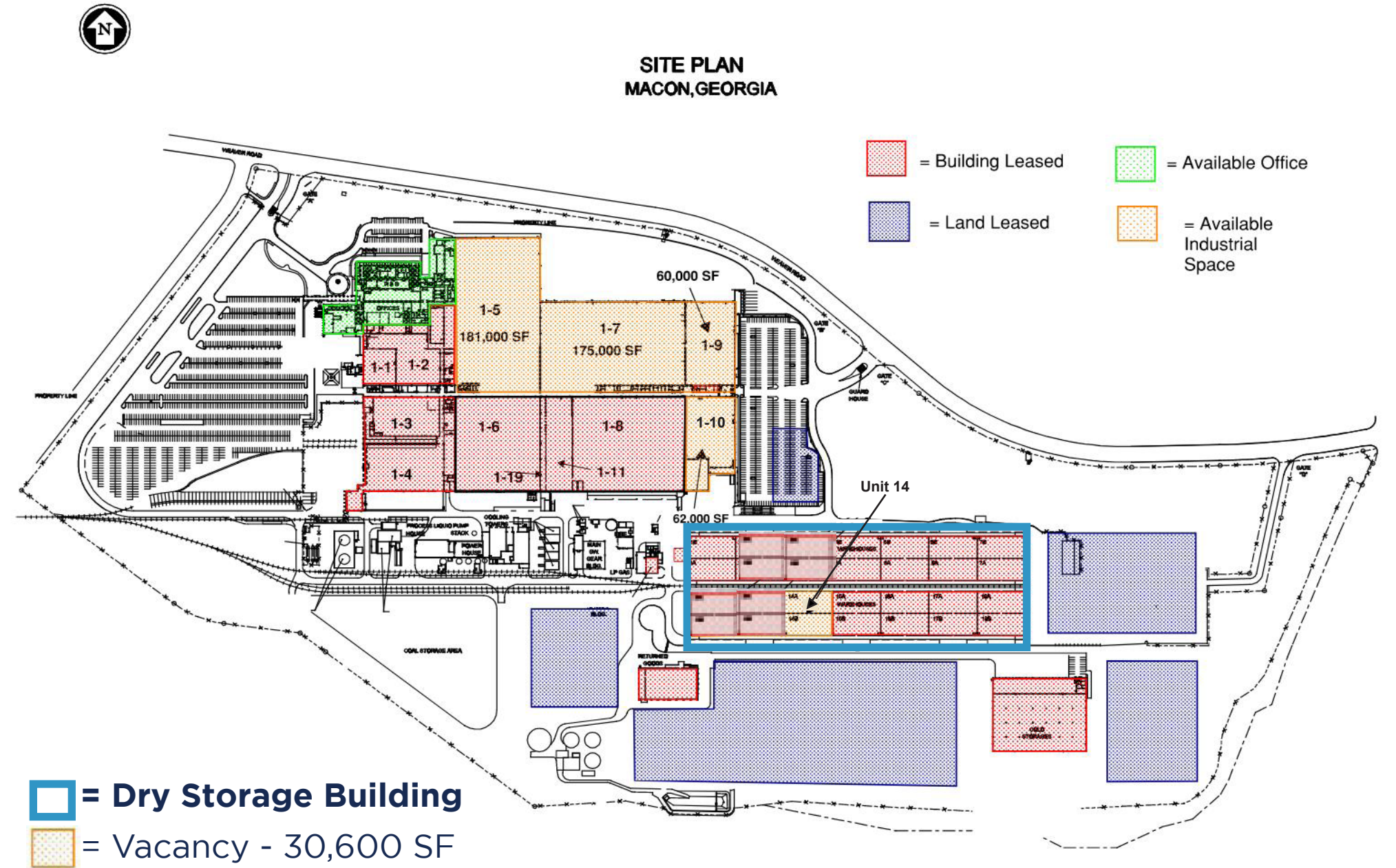
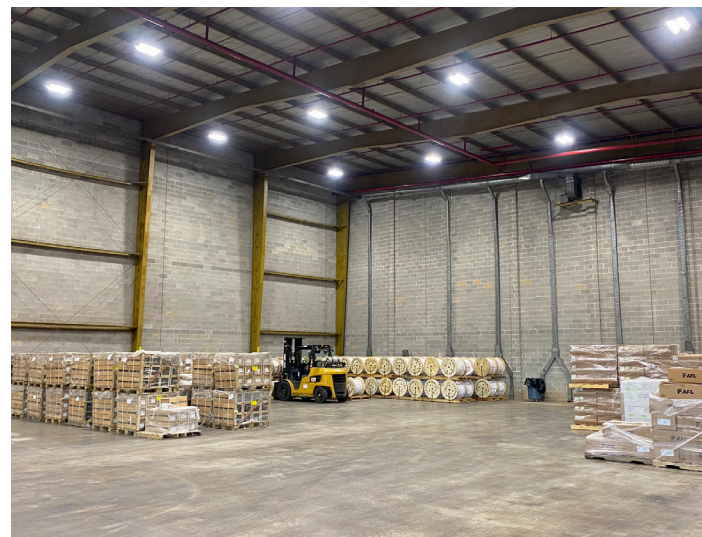
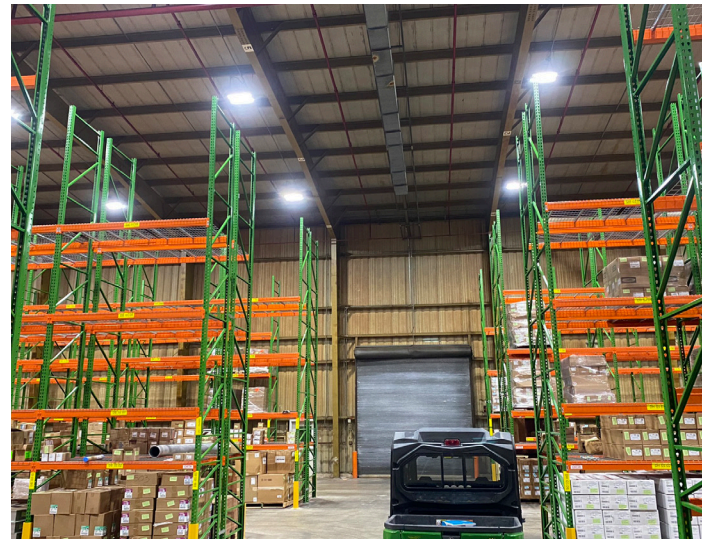
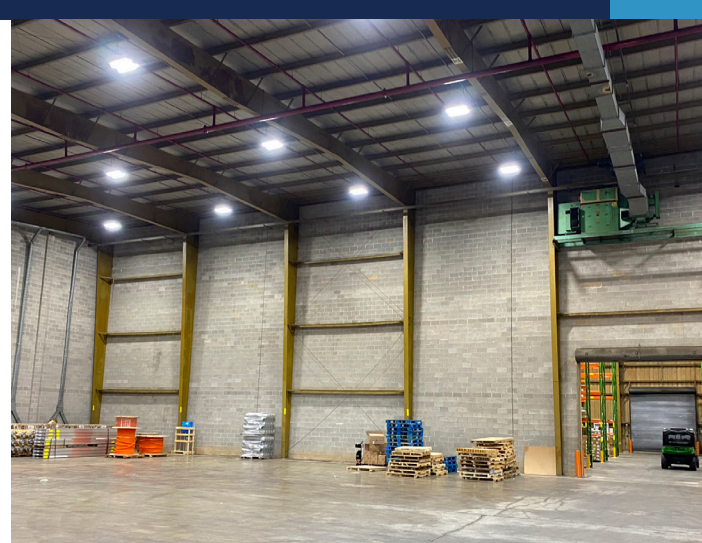
DRY STORAGE BUILDING



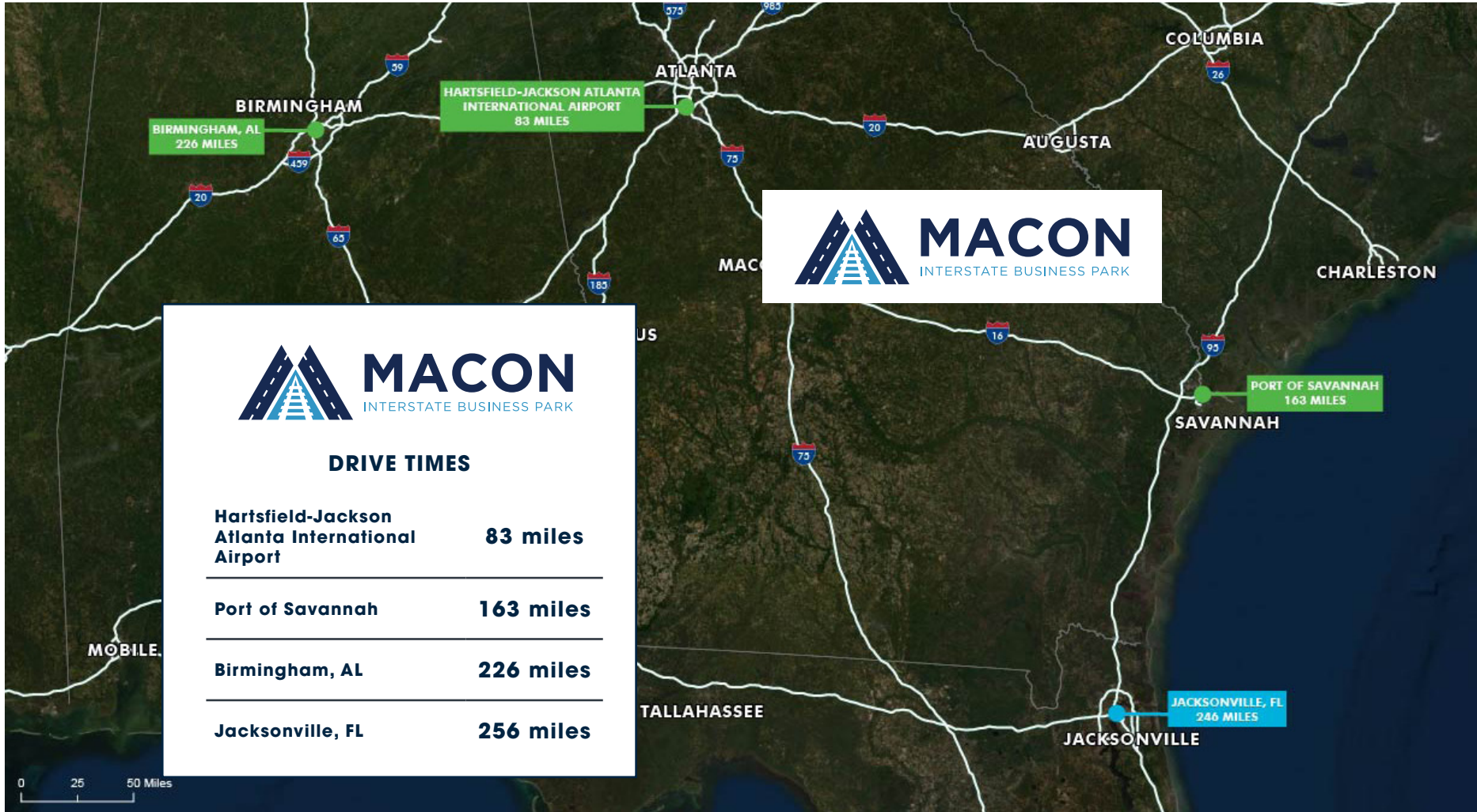
# Dry Storage Building

## BUILDING SPECIFICATIONS

- » **30,600 SF - One remaining unit**
- » **Separated into 14 locations with 2 sides each, separated by firewalls**
- » **Rail access through center**
- » **17 Loading docks total**
- » **Protected by dry sprinklers**
- » **Ceiling height 33' to 39'**
- » **Extensive car and tractor-trailer parking**
- » **Heavy power on site**
- » **Quality ownership**
- » **Extensive state and local incentives available**
- » **Convenient to I-16**







GREG HAYNES, SIOR  
 CBRE Special Properties Group  
 +1 404 923 1436  
 greg.haynes@cbre.com

STUART PENDLEY, SIOR  
 CBRE Special Properties Group  
 +1 678 595 7628  
 stuart.pendley@cbre.com

CBRE  
 +1 404 504 7900  
 www.cbre.us/atlanta

