

Free-Standing Office Building

Located in the "Heart" of the Arts District on Santa Fe

FOR LEASE



659 Santa Fe Drive, Denver, Colorado 80204

PROPERTY INFORMATION

- Available: 4,404 Sq. Ft
- Rate: \$21.00/SF + NNN
- Zoning: C-MS-5
- Year Built: 2014

***Ideal for Architects, Designers, Contractors, Law Firm, or other businesses seeking a beautifully updated office building with off-street parking in a central location!!**

PROPERTY HIGHLIGHTS

- Gorgeous Two-Story Office Building
- Back Patio Deck w/ Furniture
- ADA Accessibility
- Three Bathrooms; Two are ADA
- Eight (8) Individual Offices
- Reception area
- Entry Intercom System
- Kitchen area w/ Refrigerator, Dishwasher, Sink w/ Disposal & Microwave
- HVAC throughout
- 8 total off-street parking spaces; 4 in the front and 4 in the rear fenced-in area
- 8' x 10' Storage Shed in back Parking Lot
- Easy access to 6th Avenue, I-25, I-70 and Downtown

All information furnished in this presentation regarding this property for lease has been secured from sources we believe to be reliable. However, we accept no responsibility for its correctness and encourage the verification of all numbers prior to making any financial decisions.



Contact Information
Josh Snyder 720-475-5006
josh@theshermanagencyinc.com
Hal Naiman 720.475.5002
hal@theshermanagencyinc.com

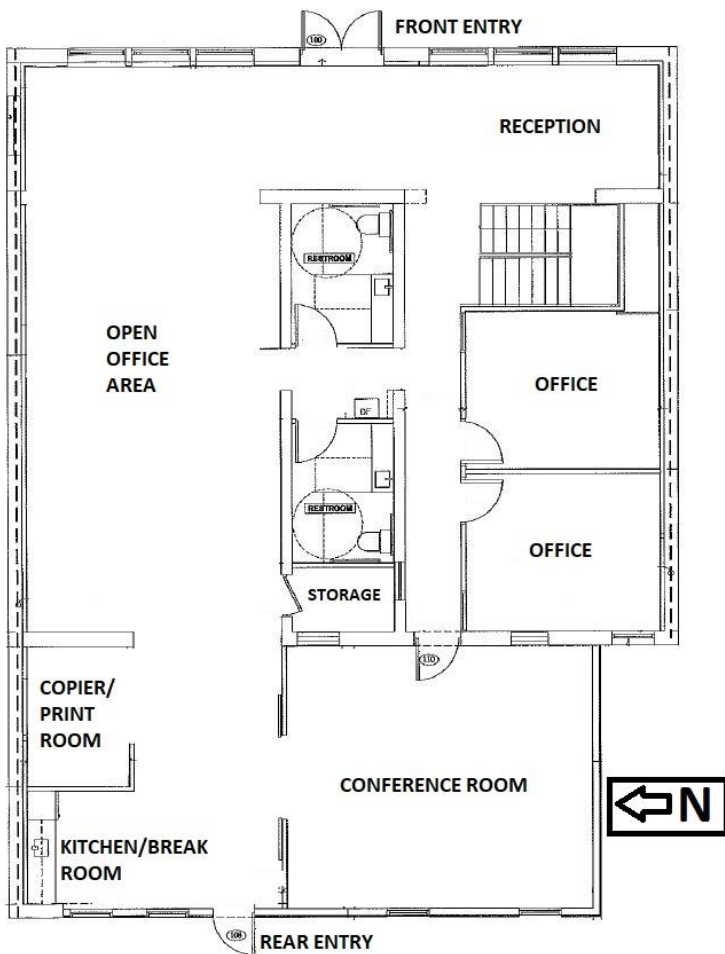
The Sherman Agency, Inc.
910 West 8th Avenue
Denver, Colorado 80204
Phone: 303.572.8778
www.theshermanagencyinc.com

Free Standing Office Building

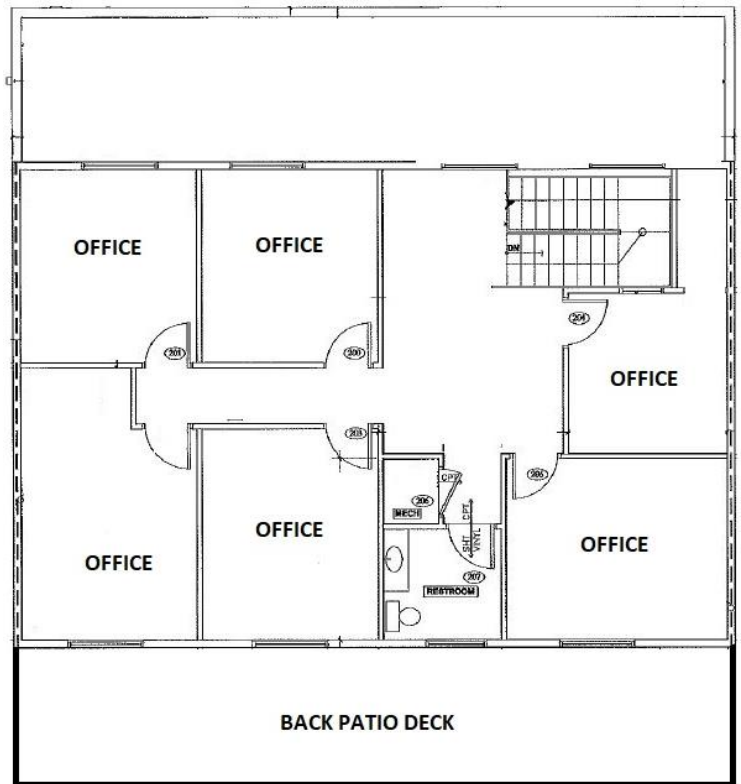
Located in the "Heart" of the Arts District on Santa Fe

FOR LEASE

FIRST FLOOR



SECOND FLOOR




The Sherman Agency, Inc.
 Real Estate Investments / Consulting / Management

Contact Information
 Josh Snyder 720-475-5006
josh@theshermanagencyinc.com
 Hal Naiman 720.475.5002
hal@theshermanagencyinc.com

The Sherman Agency, Inc.
 910 West 8th Avenue
 Denver, Colorado 80204
 Phone: 303.572.8778
www.theshermanagencyinc.com