

7300 HEADSBURG AVE.

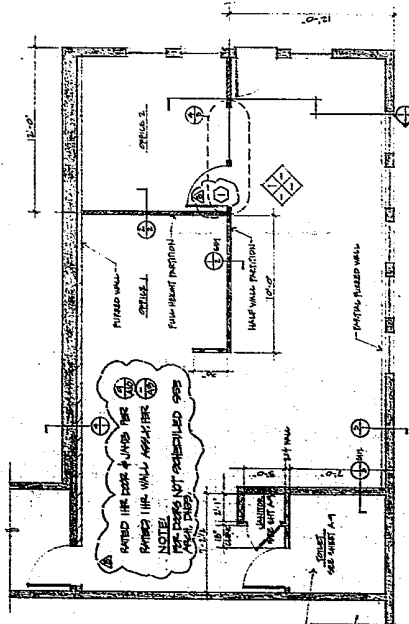
BY	REVISIONS
AS	1.00
AS	1.01
AS	1.02
AS	1.03
AS	1.04
AS	1.05
AS	1.06
AS	1.07
AS	1.08
AS	1.09
AS	1.10



C O R S O N
 ASSOCIATES ARCHITECTS
 3300 West 10th St, Suite 603, Los Angeles, CA 90024
 310-442-2222 FAX 310-442-0433

BBB OFFICE BUILDING
 7300 HEADSBURG AVENUE
 SEBASTOPOL, CALIFORNIA 95422

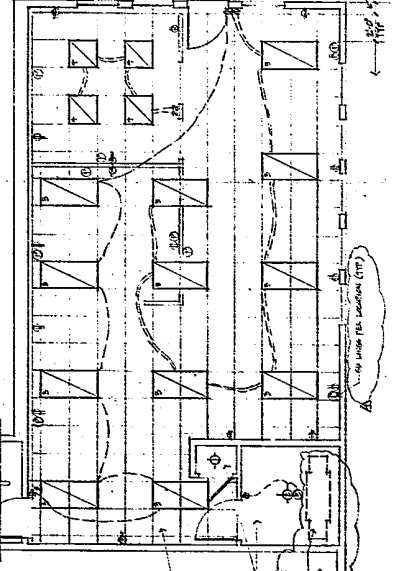
DATE: 11/14/00	SCALE: AS SHOWN
DRAWN: AS	CHECKED: AS
DATE: 11/14/00	SCALE: AS SHOWN
DRAWN: AS	CHECKED: AS
DATE: 11/14/00	SCALE: AS SHOWN
DRAWN: AS	CHECKED: AS



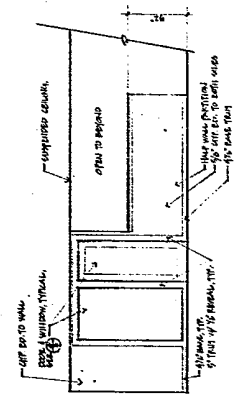
FLOOR PLAN - LOWER LEVEL

NOTE: 1. FINISHES TO BE AS SHOWN. 2. ALL WALLS AND PARTITIONS TO BE 5/8" GYP BOARD ON 2x4 STUDS. 3. ALL PARTITIONS TO BE 5/8" GYP BOARD ON 2x4 STUDS. 4. ALL PARTITIONS TO BE 5/8" GYP BOARD ON 2x4 STUDS.

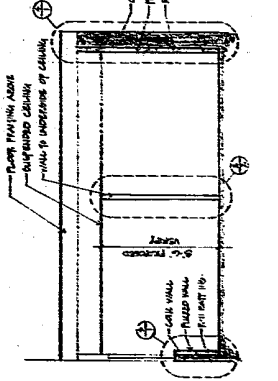
TYPE	OFFICE	SPACE	FINISH	LOCATION	REMARKS
1	OFFICE	1000	CONCRETE	1000	CONCRETE FLOOR
2	OFFICE	1000	CONCRETE	1000	CONCRETE FLOOR
3	OFFICE	1000	CONCRETE	1000	CONCRETE FLOOR
4	OFFICE	1000	CONCRETE	1000	CONCRETE FLOOR
5	OFFICE	1000	CONCRETE	1000	CONCRETE FLOOR
6	OFFICE	1000	CONCRETE	1000	CONCRETE FLOOR
7	OFFICE	1000	CONCRETE	1000	CONCRETE FLOOR
8	OFFICE	1000	CONCRETE	1000	CONCRETE FLOOR
9	OFFICE	1000	CONCRETE	1000	CONCRETE FLOOR
10	OFFICE	1000	CONCRETE	1000	CONCRETE FLOOR



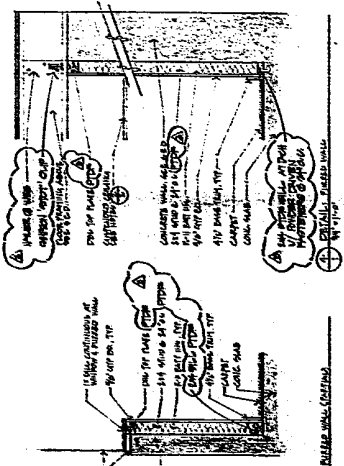
DETAILED CEILING PLAN - LOWER LEVEL



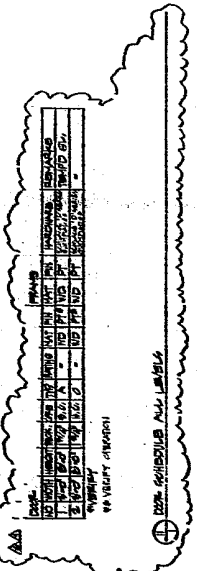
INTERIOR ELEVATION (ENLARGED)



INTERIOR ELEVATION (ENLARGED)



INTERIOR ELEVATION (ENLARGED)



INTERIOR ELEVATION (ENLARGED)