



311 Applegate Lane
Pelham, AL

AVAILABLE
MAY 1ST

Lease Rate: \$3,500 / month (NNN)



3,200 SF Warehouse / Office Building With Yard

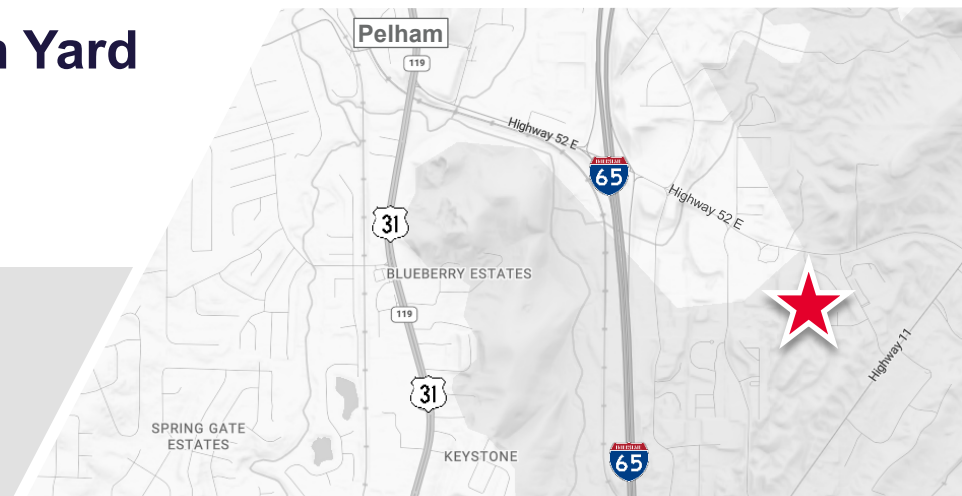
- **Including 850 SF Office Space**
- **Fenced, graveled storage yard; M-1 Light Industrial Zoning**
- **Located in Oak Mountain Business Park**

For more information, please contact:

JAKE BYERS
Senior Associate
+1 205 314 5555
jbyers@egsinc.com

MARK BYERS, SIOR
President | Partner
+1 205 314 5522
mbyers@egsinc.com

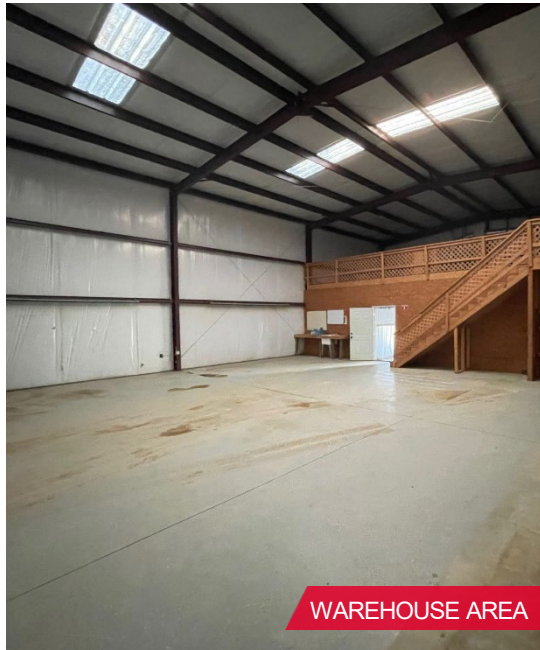
2100 3rd Avenue North, Suite 700
Birmingham, AL 35203
phone: +1 205 939 4440
egsinc.com



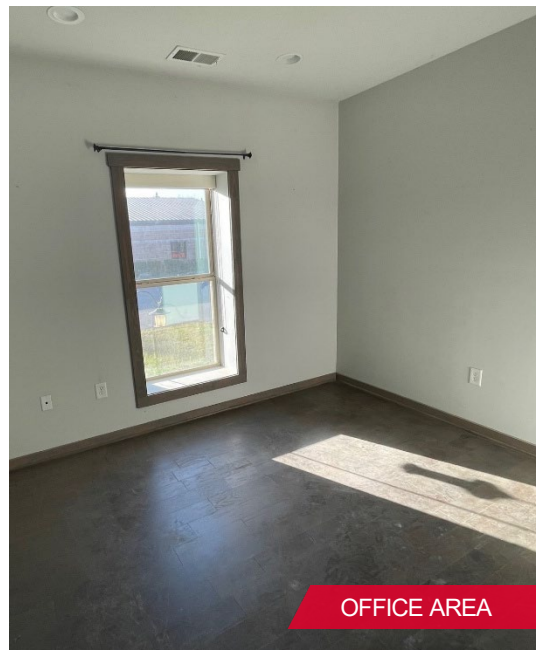
PROPERTY DETAILS



PROPERTY



WAREHOUSE AREA



OFFICE AREA

PROPERTY HIGHLIGHTS

- Lease Rate: \$3,500 / month (NNN)
- 2,350 SF warehouse space; 850 SF office space
- ± ½ AC fenced yard / outdoor storage; M-1 zoning
- Available May 1st
- One (1) 12' x 14' drive-in door
- Built in 2019
- Located in Oak Mountain Business Park
- Less than 1.5 miles from I-65



AERIAL VIEW

Independently Owned and Operated / A Member of the Cushman & Wakefield Alliance

Cushman & Wakefield Copyright 2026. No warranty or representation, express or implied, is made to the accuracy or completeness of the information contained herein, and same is submitted subject to errors, omissions, change of price, rental or other conditions, withdrawal without notice, and to any special listing conditions imposed by the property owner(s). As applicable, we make no representation as to the condition of the property (or properties) in question.