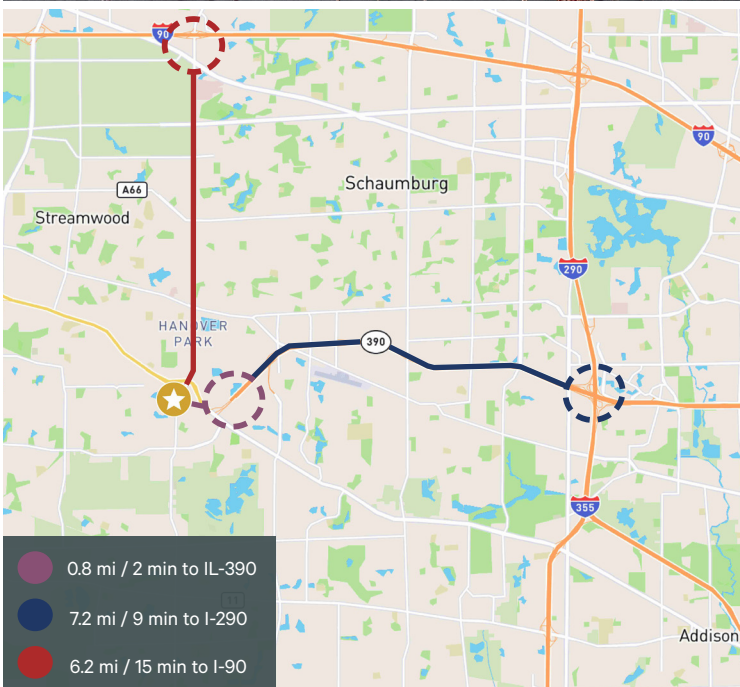


6250 Church Road Hanover Park, IL

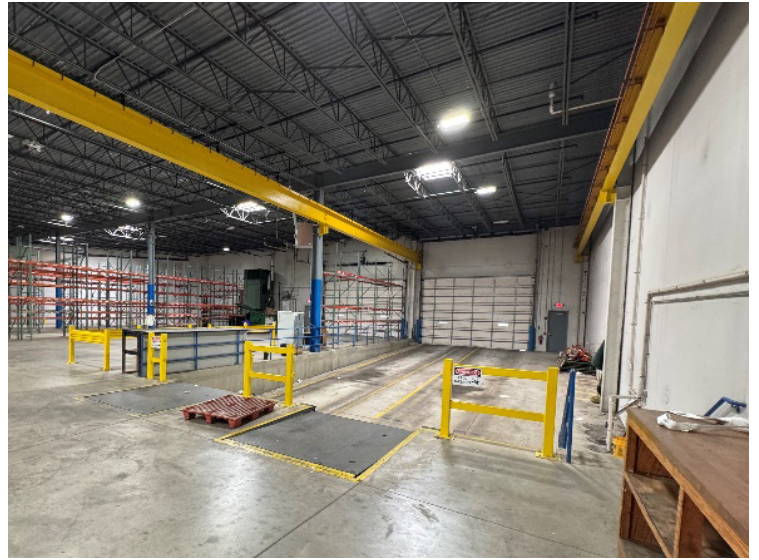
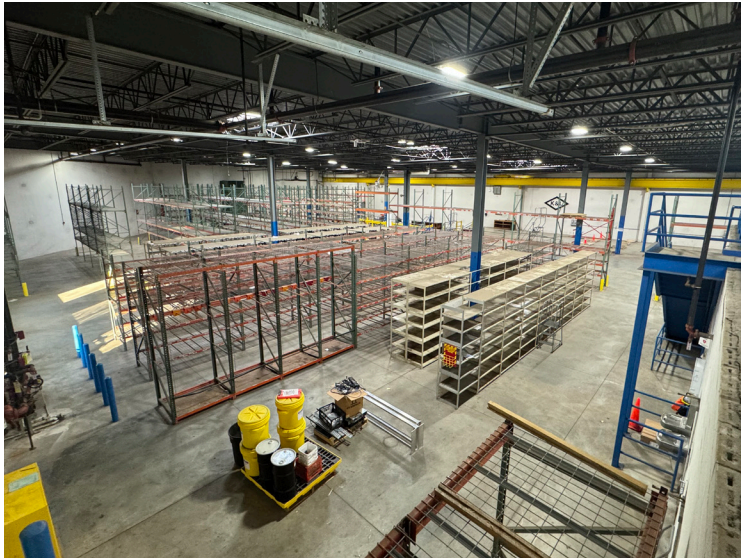
30,110 SF Available in DuPage County



Property Specifications	
Total Building Size:	30,110 SF
Available Size:	30,110 SF
Office Size:	3,524 SF
Mezzanine:	3,362 SF (not included in rentable square footage)
Ceiling Height:	22' clear
Loading:	2 Interior docks 2 Drive-in doors
Car Parking:	±25 spaces
Sublease Term Through:	September 14, 2027
Date Available:	Immediately
Asking Sublease Rate:	\$12.00 PSF gross

Highlights

- + Free-standing, single-tenant building
- + Outside storage potential
- + 2-ton crane over interior dock bays
- + Quick access to IL-Route 390 and IL- Route 59



Site Plan



Contact Us

Kevin Segerson
Executive Vice President
+1 847 890 0614
kevin.segerson@cbre.com

Genna Ohrn
Transaction Manager
+1 708 415 5350
genna.ohrn@cbre.com

Clayton Thorson
Associate
+1 630 344 2560
clayton.thorson@cbre.com

© 2025 CBRE, Inc. All rights reserved. This information has been obtained from sources believed reliable, but has not been verified for accuracy or completeness. You should conduct a careful, independent investigation of the property and verify all information. Any reliance on this information is solely at your own risk. CBRE and the CBRE logo are service marks of CBRE, Inc. All other marks displayed on this document are the property of their respective owners, and the use of such logos does not imply any affiliation with or endorsement of CBRE. Photos herein are the property of their respective owners. Use of these images without the express written consent of the owner is prohibited.