

Hwy 29 Outparcel

HIGHWAY 29 AT MOREHEAD RD, HARRISBURG, NC



Land

FOR
| Sale

SIZE
| 6 AC

PRICE
| Call for Pricing



Overview

6 Acre outparcel available as part of a future proposed Westgate mixed use community

Outparcel to be delivered rough graded with utilities stubbed

New racetrack constructed across from site

Town of Harrisburg Zoning: Employment Center District (EC)

Rezoning: Property currently under petition for General Commercial (CD)

1.8 miles (3min) to I-485 interchange

6 Acre Outparcel for Sale



J. Nolan Mills
Senior Vice President
(704) 248 2133
nmills@mpvre.com

2400 South Boulevard | Suite 300
Charlotte, NC 28203

mpvre.com

Hwy 29 Outparcel

HIGHWAY 29 AT MOREHEAD RD, HARRISBURG, NC

Property Overview

Demographics

Source: Esri® 2024

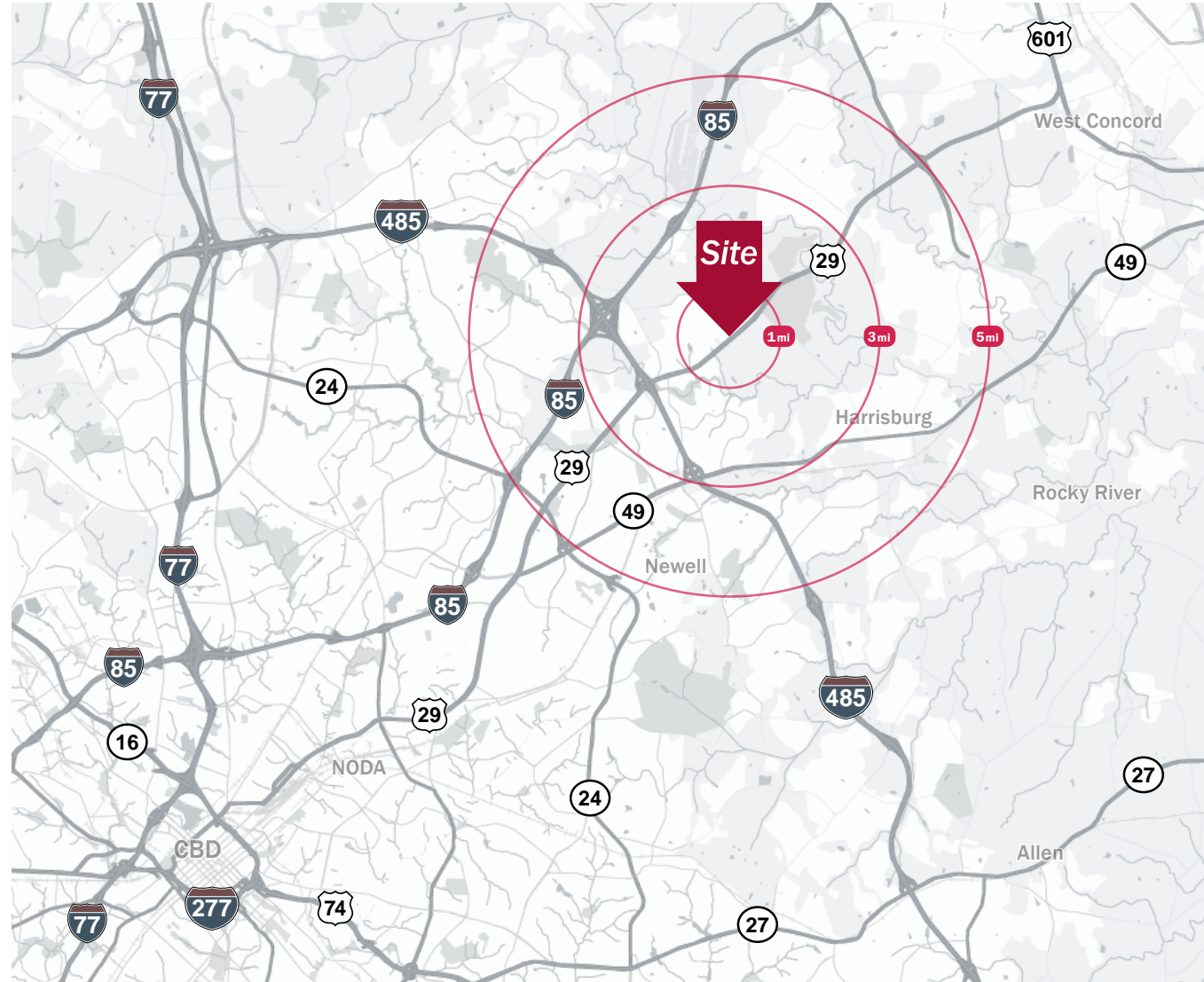
	1 mile	3 mile	5 mile
Population	2,587	46,735	156,023
Growth Rate	5.25%	2.03%	2.28%
Avg. HH Income	\$119,467	\$99,120	\$114,176

Traffic Count

Source: NCDOT

	AADT
Hwy 29	22,500 (2023)

Nolan Mills
704.248.2133
nmills@mpvre.com



J. Nolan Mills
Senior Vice President
(704) 248 2133
nmills@mpvre.com

2400 South Boulevard | Suite 300
Charlotte, NC 28203

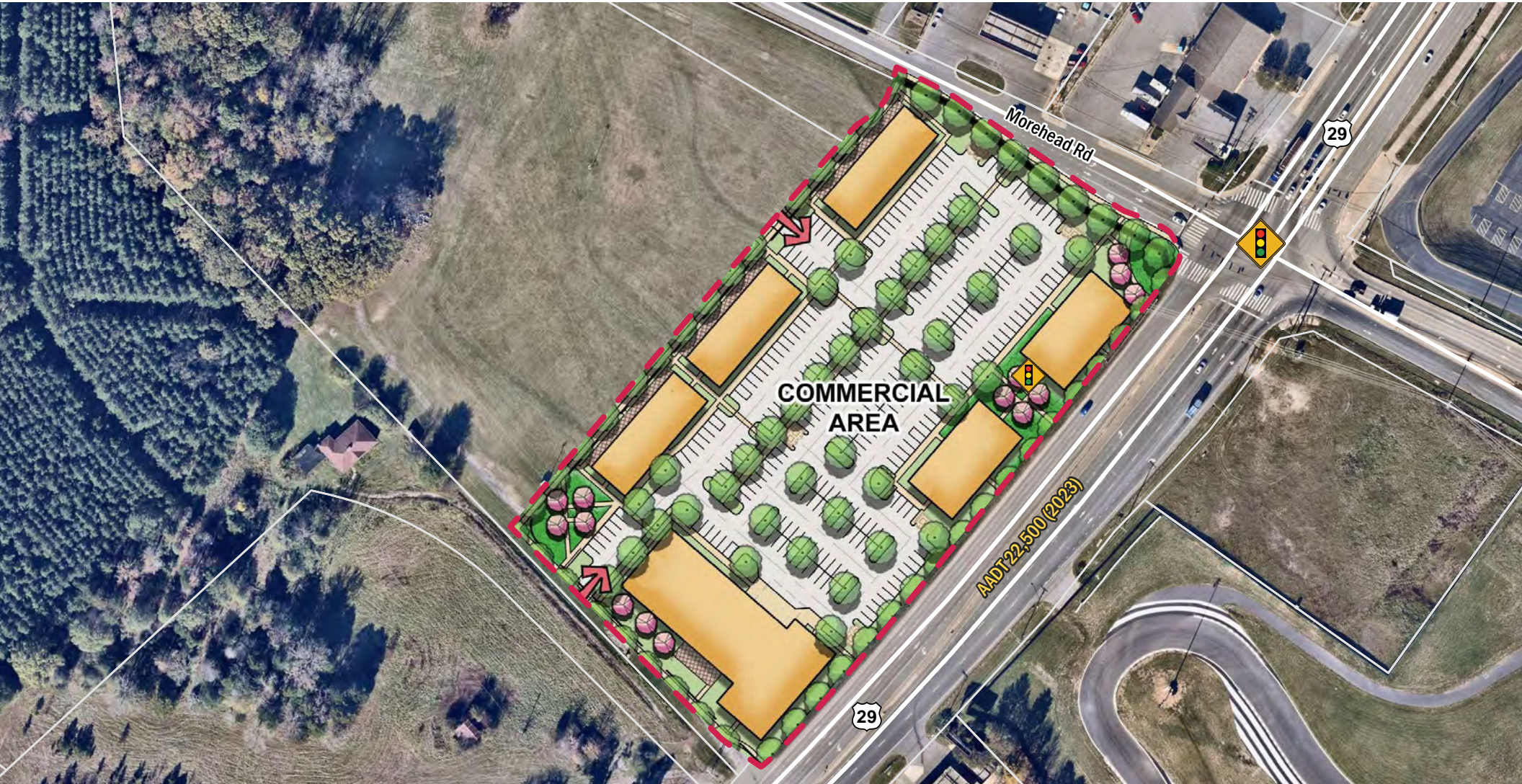
mpvre.com

Hwy 29 Outparcel

HIGHWAY 29 AT MOREHEAD RD, HARRISBURG, NC

Conceptual Site Plan

- Portion of PIDs 4598562430 & 4598564578
- Proposed uses include: 120-room hotel - 14,000 SF restaurant (no drive-thru) - 23,000 SF Office and Commercial (SUBJECT TO CHANGE)



J. Nolan Mills
Senior Vice President
(704) 248 2133
nmills@mpvre.com

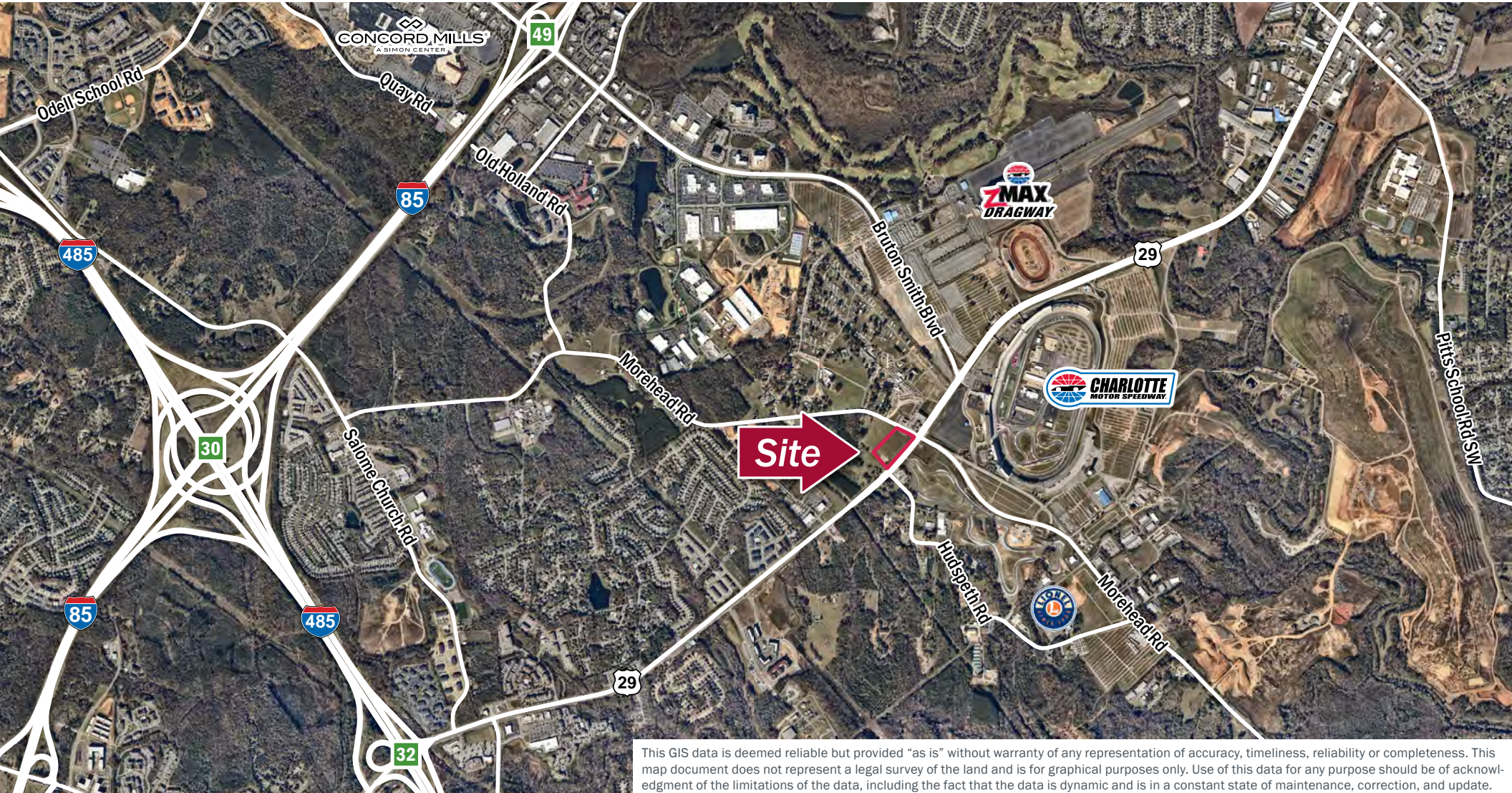
2400 South Boulevard | Suite 300
Charlotte, NC 28203

mpvre.com

Hwy 29 Outparcel

HIGHWAY 29 AT MOREHEAD RD, HARRISBURG, NC

Market Aerial



This GIS data is deemed reliable but provided "as is" without warranty of any representation of accuracy, timeliness, reliability or completeness. This map document does not represent a legal survey of the land and is for graphical purposes only. Use of this data for any purpose should be of acknowledgment of the limitations of the data, including the fact that the data is dynamic and is in a constant state of maintenance, correction, and update.



J. Nolan Mills
Senior Vice President
(704) 248 2133
nmills@mpvre.com

2400 South Boulevard | Suite 300
Charlotte, NC 28203

mpvre.com



Medical | Industrial | Retail | Land | Investment | Office

contact

J. Nolan Mills
Senior Vice President
(704) 248 2133
nmills@mpvre.com

2400 South Boulevard | Suite 300
Charlotte, NC 28203

mpvre.com