



For Sublease

6710 Oxon Hill Road,
Oxon Hill, MD 20745

Turn-Key Sublease | Available Immediately



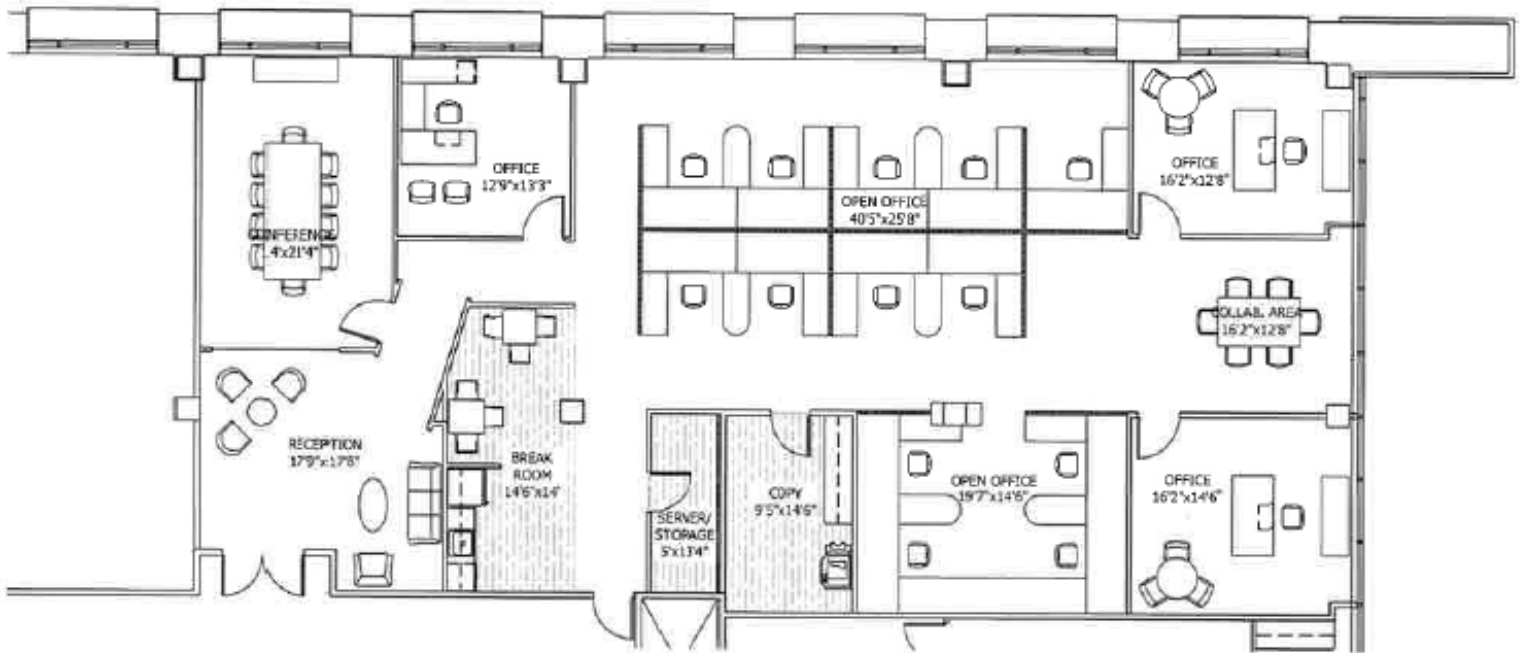
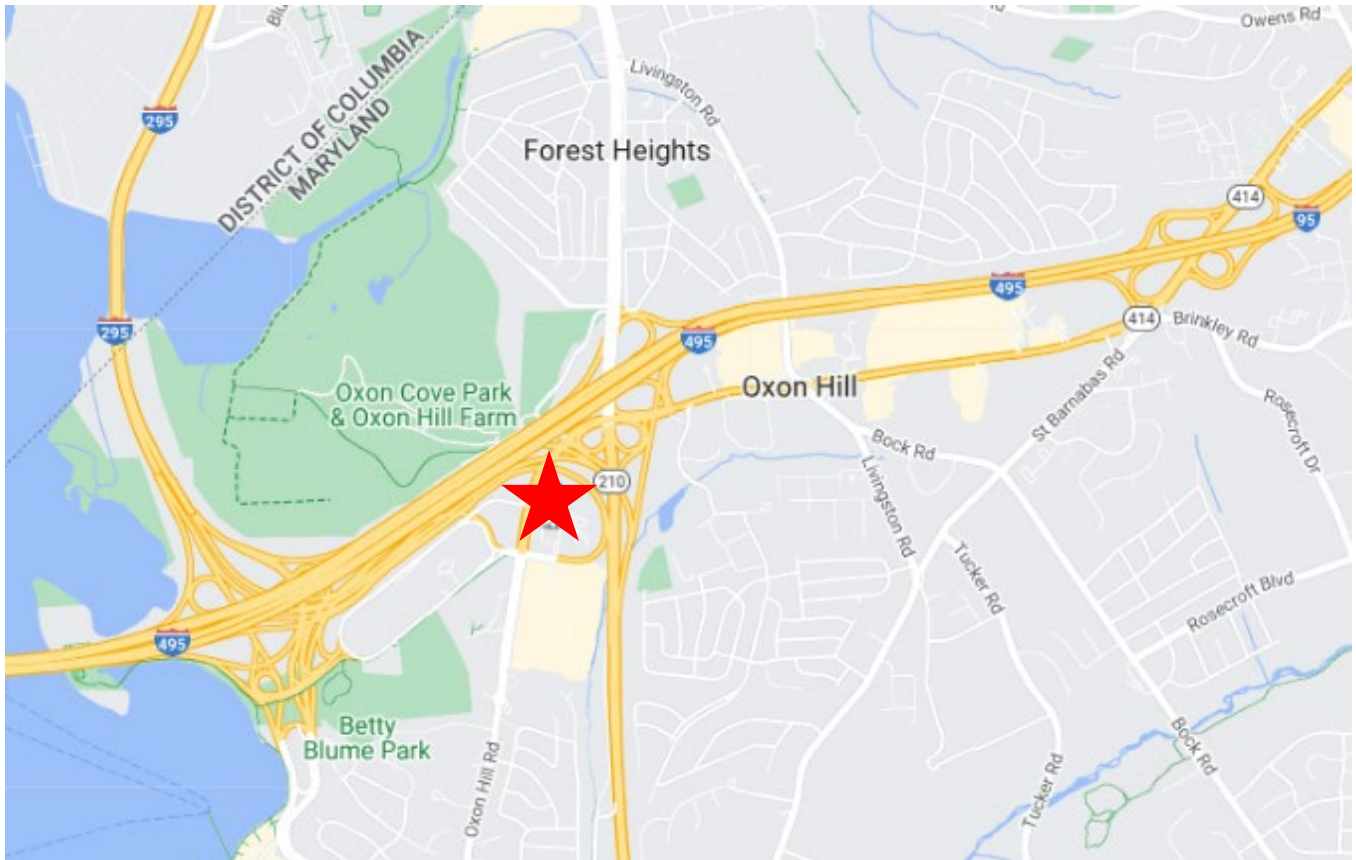
Sublease Details

- **Premises:** 4,114 RSF, 3rd Floor
- **Term:** Through 6/30/2025
- **Rate:** Negotiable
- **Occupancy:** Immediate

Premises Highlights

- Fully furnished
- Excellent access to I-495/95, I-295, and Rt. 210
- Close proximity to National Harbor Project





SUITE 310

Contact Info:

Amanda Rosenthal
(301) 325 0257
Amanda.Rosenthal@jll.com

Steve Ranck
(703) 891 8389
Steve.Ranck@jll.com