

#### PARKING REQUIREMENTS:

ZONING: LOTS 1-5: GENERAL COMMERCIAL (C-2)  
LOTS 6-9: MEDIUM DENSITY APARTMENT (RM-6)  
USE: OFFICE AND RETAIL  
ACREAGE: 8.23 AC  
BUILDING SQ. FT. TOTAL: 35,700  
PARKING REQUIREMENTS:

CRITERIA	DATA	REQUIRED
SHOPPING CENTER		
1 P.S./250 S.F.	33,915 S.F.	136 P.S.

#### HANDICAP PARKING REQUIREMENTS:

REQUIRED: **5** 6  
PROVIDED: 7  
TOTAL REQUIRED PARKING: 136 P.S.  
TOTAL PROVIDED PARKING: **436** P.S. **179**  
TOTAL REQUIRED BICYCLE PARKING: 14  
TOTAL PROVIDED BICYCLE PARKING: 14  
% OF LOT IMPERVIOUS= **53.1%** **62.9%**  
BUILDING & PARKING= **2.81** AC. **3.33**  
TOTAL PROPERTY= 5.29 AC.

#### ABBREVIATIONS

L/E LANDSCAPE EASEMENT  
U/E UTILITY EASEMENT  
A/E ACCESS EASEMENT  
B/L BUILDING LINE

#### PAVEMENT LEGEND

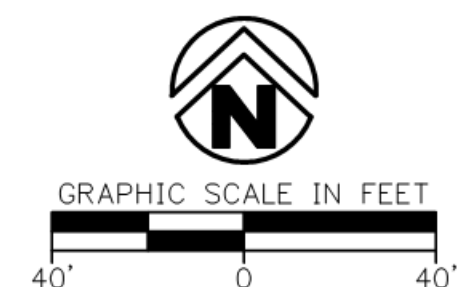
	STANDARD DUTY CONCRETE PAVEMENT - REFER TO DETAIL 4/C-504
	HEAVY DUTY CONCRETE PAVEMENT - REFER TO DETAIL 5/C-504
	CONCRETE SIDEWALK - REFER TO DETAILS 1-2/C-505

#### PAVING NOTES

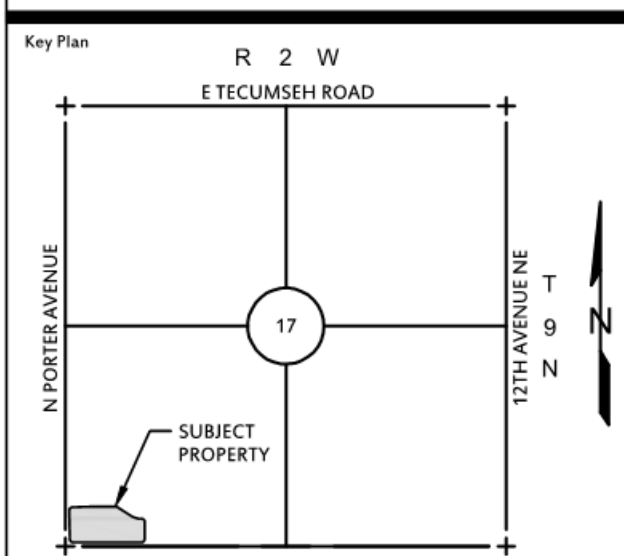
- THE CONTRACTOR SHALL SUBMIT A JOINT LAYOUT PLAN FOR REVIEW BY THE ENGINEER, INDICATING THE LOCATIONS AND TYPES OF JOINTS PROPOSED. PAVING WORK SHALL NOT COMMENCE WITHOUT THE ENGINEER'S APPROVAL OF THE JOINT LAYOUT PLAN.
- JOINT LAYOUT SHALL NOT PRODUCE ANY JOINTS THAT ARE CLOSER THAN 2' APART, AND SHALL NOT PRODUCE ANY ANGLES TO ANOTHER JOINT THAT ARE LESS THAN 90°.
- JOINTS SHALL BE EXTENDED THROUGH CURBING AND SHALL BE PERPENDICULAR TO THE FACE OF CURB OR EDGE OF PAVING.
- WIDTH TO LENGTH RATIO SHALL BE LESS THAN 1.25.
- THE SUBGRADE UNDER PAVEMENTS SHALL BE PREPARED IN ACCORDANCE WITH THE STATE OF OKLAHOMA DEPARTMENT OF TRANSPORTATION (ODOT) STANDARD SPECIFICATIONS FOR CONSTRUCTION AND MATERIALS (LATEST EDITION).
- AGGREGATE BASE COARSE MIXTURES SHALL CONFORM WITH THE GRADATION, COMPACTION AND OTHER REQUIREMENTS SHOWN IN THE CONTRACT SPECIFICATIONS OR WITH THE LOCAL STANDARD SPECIFICATIONS FOR ROAD AND BRIDGE CONSTRUCTION.
- PORTLAND CEMENT CONCRETE PAVEMENT SHALL CONFORM WITH THE REQUIREMENTS SHOWN IN THE OKLAHOMA STATE DEPARTMENT OF TRANSPORTATION (ODOT) STANDARD SPECIFICATIONS FOR CONSTRUCTION AND MATERIALS (LATEST EDITION).
- THE CONTRACTOR SHALL APPLY A TACK COAT TO THE FACE OF THE CONCRETE GUTTER WHERE THE GUTTER CONTACTS ASPHALT.
- CONCRETE TO BE MINIMUM 3500 P.S.I., 28 DAYS

#### SITE NOTES

- THE DESIGN, INSPECTION, AND CERTIFICATION OF ANY RETAINING WALL SHOWN OR REFERENCED HEREIN, INCLUDING BUT NOT LIMITED TO, SEGMENTAL RETAINING WALLS, MASS GRAVITY WALLS, GABION WALLS, ETC., GREATER THAN FORTY-EIGHT INCHES IN HEIGHT, SHALL BE BY OTHERS. ANY RETAINING WALL DATA SHOWN OR REFERENCED HEREIN SHALL BE FOR COORDINATION OF THE WALL LOCATION AND ELEVATIONS ONLY.
- ALL WORK AND MATERIALS SHALL COMPLY WITH ALL CITY/COUNTY/STATE/FEDERAL REGULATIONS AND CODES AND OSHA STANDARDS.
- CONTRACTOR SHALL REFER TO ARCHITECTURAL PLANS FOR EXACT LOCATIONS AND DIMENSIONS OF VESTIBULES, SLOPE PAVING, SIDEWALKS, EXIT PORCHES, TRUCK DOCKS, PRECISE BUILDING DIMENSIONS AND EXACT UTILITY ENTRANCE LOCATIONS.
- ALL DIMENSIONS AND RADII ARE TO FACE OF CURB UNLESS OTHERWISE NOTED.
- ALL WORK SHALL BE DONE IN STRICT ACCORDANCE WITH THE OKLAHOMA STATE DEPARTMENT OF TRANSPORTATION (ODOT) STANDARD SPECIFICATIONS FOR CONSTRUCTION AND MATERIALS (LATEST EDITION).
- ALL CURB/SIDEWALK/HANDICAP RAMP DESIGNS SHALL CONFORM TO ADA STANDARDS OR LOCAL RESTRICTIVE CODES, WHICHEVER IS MORE RESTRICTIVE.
- CONTRACTOR SHALL ENSURE ALL NECESSARY PERMITS ARE OBTAINED PRIOR TO CONSTRUCTION START.
- CONTRACTOR SHALL MATCH PROPOSED CURB AND GUTTER, CONCRETE, AND PAVEMENT TO EXISTING IN GRADE AND ALIGNMENT.
- CONTRACTOR SHALL MAINTAIN ALL EXISTING PARKING, SIDEWALKS, DRIVES, ETC. CLEAR AND FREE FROM ANY CONSTRUCTION ACTIVITY AND/OR MATERIAL TO ENSURE EASY AND SAFE PEDESTRIAN AND VEHICULAR TRAFFIC TO AND FROM THE SITE.
- ALL WORK SHALL BE DONE IN ACCORDANCE WITH CITY OF NORMAN'S ENGINEERING DESIGN CRITERIA AND STANDARD SPECIFICATIONS.



#### WOODCREST PLAZA NORMAN, OK



No.	Description	Date
1	CHANGE ORDER #1	4.10.17

This document, and the ideas and designs incorporated herein, as an instrument of professional service, is the property of Crafton, Tull & Associates, Inc., and is not to be used, in whole or in part, for any other project, without the written authorization of Crafton, Tull & Associates, Inc.

PROJECT NO: 16604200  
ISSUE DATE: 07/05/16  
CONTRACT: J. SPENCER  
CHECKED BY: J. SPENCER

ISSUED FOR PERMIT  
4/10/17  
25201  
OKLAHOMA

OVERALL SITE PLAN