



Meadows & Ohly

Innovation Tower

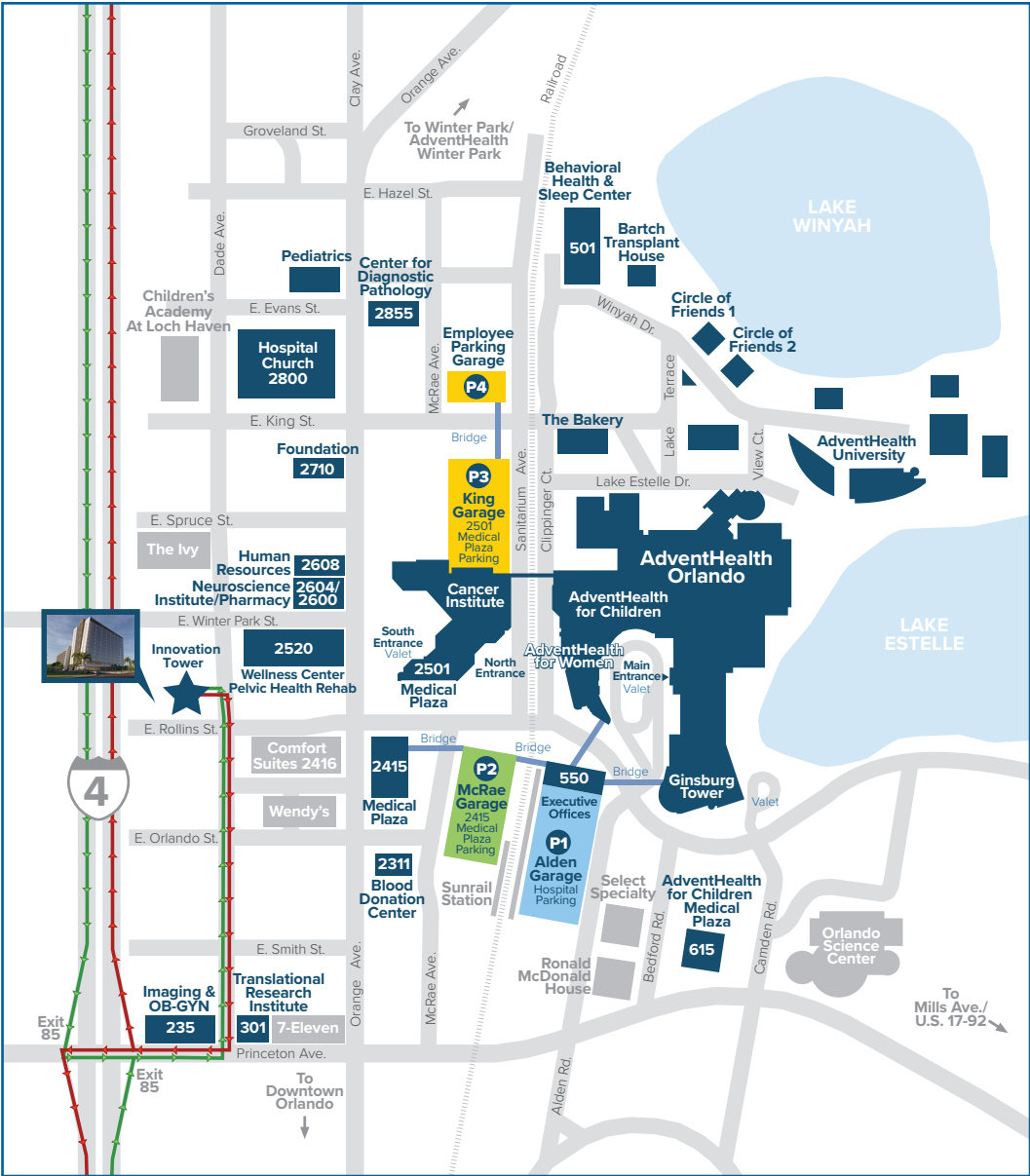
*265 E Rollins Street
Orlando, FL 32804*

*The future of
patient care
in central
Florida*

EXECUTIVE SUMMARY

Innovation Tower is the latest addition to the 172-acre Health Village campus. Health Village is the home of AdventHealth Orlando, AdventHealth for Women and AdventHealth for Children — the medical hub of Orlando.

At 12 stories and 320,000 square feet, the building is a focal point for AdventHealth’s flagship campus, standing next to I-4 near Princeton Street.

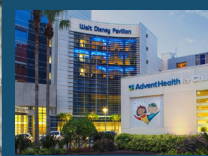


Location Highlights

- Visible from I-4
- Easy Access to both North and South I-4
- Convenient Ingress/Egress for Patients
- Part of Health Village



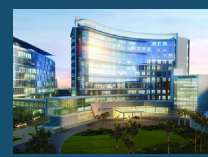
Innovation Tower



AdventHealth for Children



AdventHealth Hospital



AdventHealth for Women

DEMOGRAPHICS



Innovation Tower's premier location is not only convenient for patients, it will allow practices to serve a large part of Orlando and surrounding areas with strong demographics and payor mix.



Population
911,916



Median Household Income
\$60,500



Median Age
36.8



Private Insurance (%)
50.5%

Tenants by Specialty

Neurology Clinic

Patient Outreach

Research

Ambulatory Surgery Center

Bariatrics

Behavioral Health Clinic

CV Academic Clinic

IBD/Multidisciplinary Clinic

Infusion

Neurosurgery

Orthopedics

Outpatient Imaging

Pharmacy

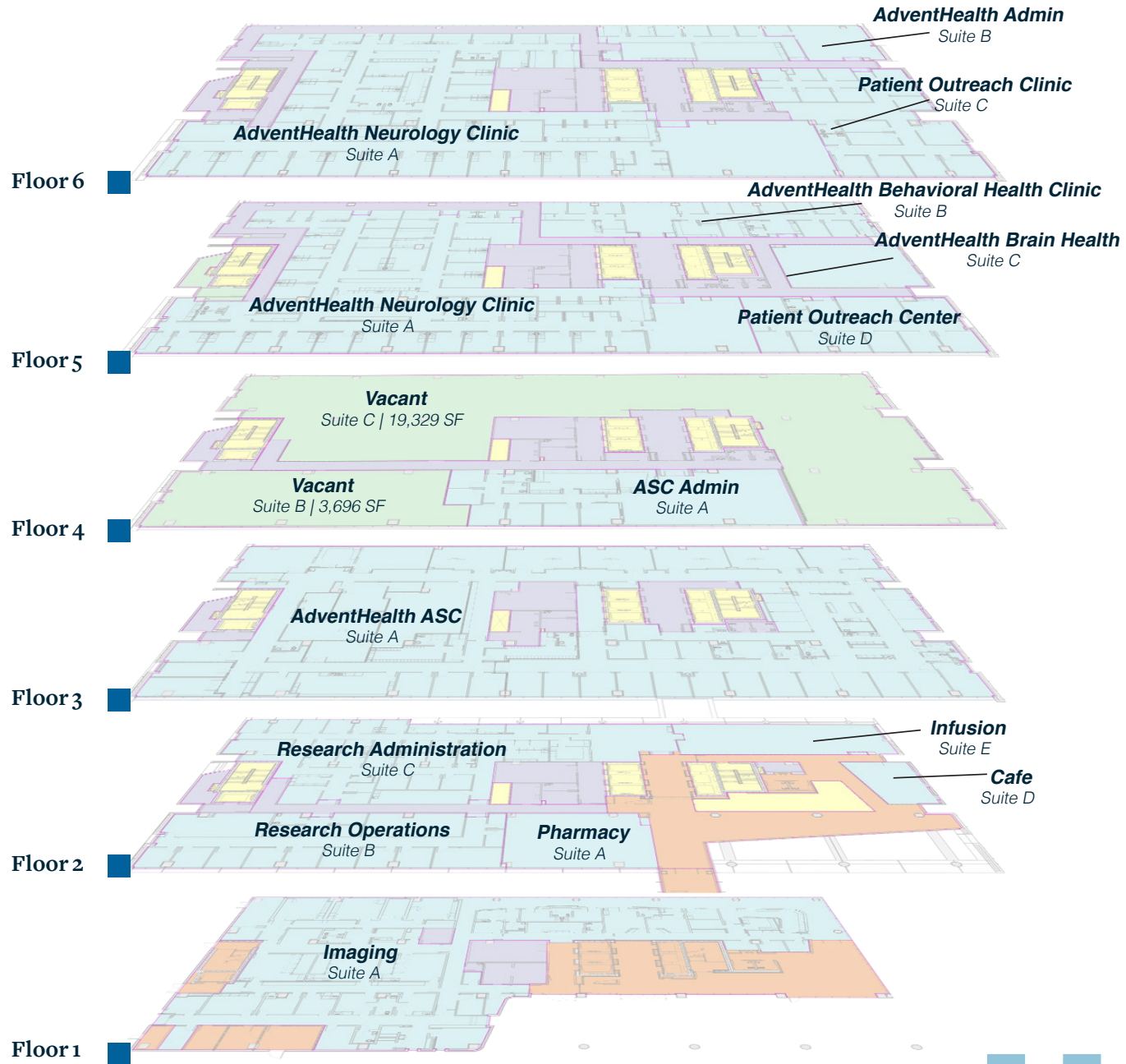
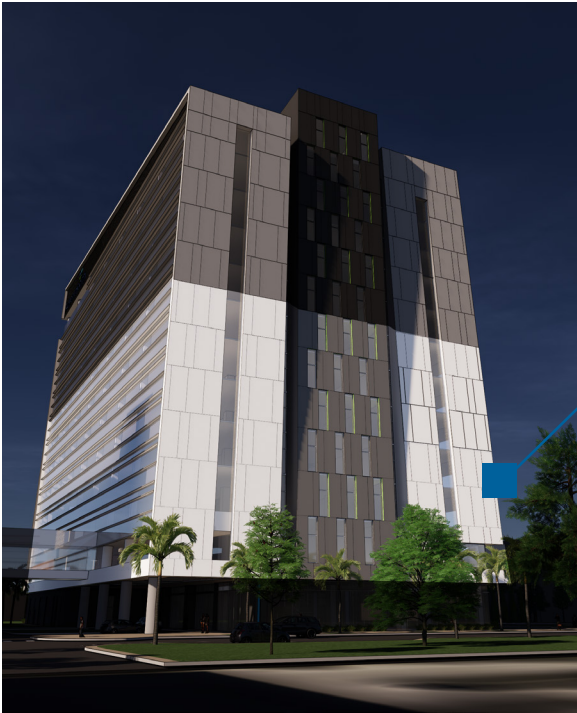
Rehab: Neuro/Ortho/Pelvic/Biomechanics

Structural Heart & Aortic Clinic

Innovation Tower will provide comprehensive outpatient care in one convenient location. It will be the new home for AdventHealth's Neuroscience Institute and Brain Health Program and a variety of other services. Grouping orthopedic, neuroscience specialists and other specialists in a single building will allow better collaboration between the specialists, yielding benefits to patients.

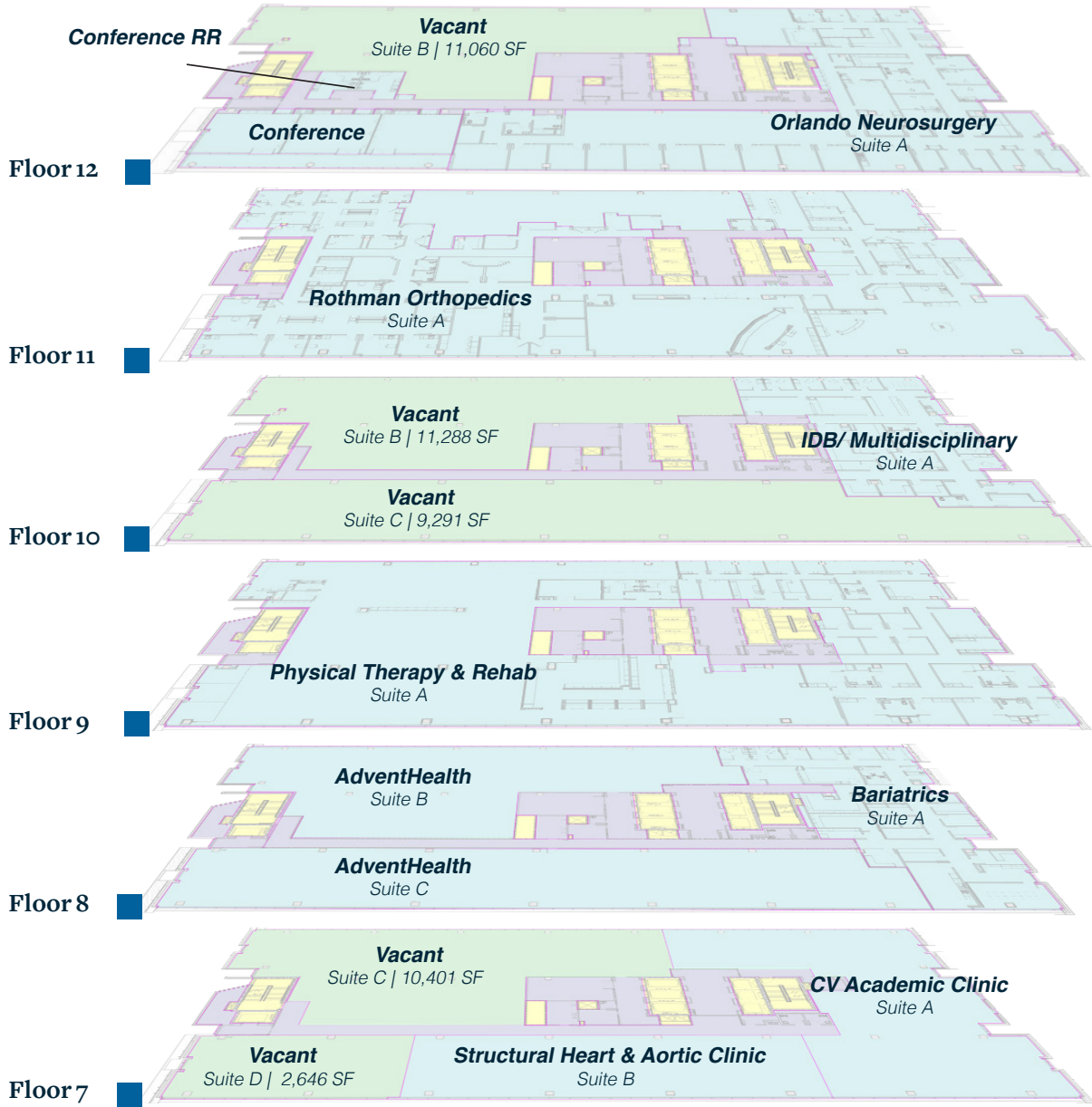


STACKING PLAN | Floors 1-6





STACKING PLAN | Floors 7-12



Innovation Tower

At 12 stories and 320,000 square feet, Innovation Tower is a focal point for AdventHealth's flagship campus, rising next to I-4 near Princeton Street. The building also has an attached 11-floor, 1,600-space parking garage. It will serve as Florida headquarters for Rothman Orthopedic Institute and Orlando Neurosurgery, and also bring a range of new and expanded services to the Orlando region.

AdventHealth - Health Village Campus

Innovation Tower and expanded services are a major step forward in the evolution of the 172-acre Health Village campus. Health Village — the home of AdventHealth Orlando, AdventHealth for Women and AdventHealth for Children — also includes centers of innovation and medical research, as well as residential, retail, dining and lodging components.

This unique life sciences and healthcare innovation district also offers:

- Access to one of the largest not-for-profit hospital systems in the United States
- Real-time access to a continuum of care - providers, patients and facilities
- A business friendly state, low manufacturing costs and moderate climate conducive to year-round productivity
- World-class entertainment, arts and sports teams
- The AdventHealth Innovation Ecosystem - a unique set of assets aimed to provide support along the life-cycle of your company's growth and development
- A team dedicated to facilitating strategic alliances, breaking down barriers and cultivating innovative healthcare and life science solutions
- Access to a capital network focused on life sciences development and innovation
- Thriving residential communities, growing retail environment and acres of gardens and parks to support a healthy lifestyle for your employees
- Easily accessible transportation - rail, bus, bike, care share, and port access
- Access to IQ Orlando, an innovation-focused business partnership concentrated on recruiting and launching life sciences companies



Meadows & Ohly

For more information on Innovation Tower, please contact:

Brandon Wallace

SVP, Brokerage Services
(470) 485-8601
brandon.wallace@meadowsandohly.com

C.T. Voyles

Director, Brokerage Services
(470) 485-8608
c.voyles@meadowsandohly.com

