

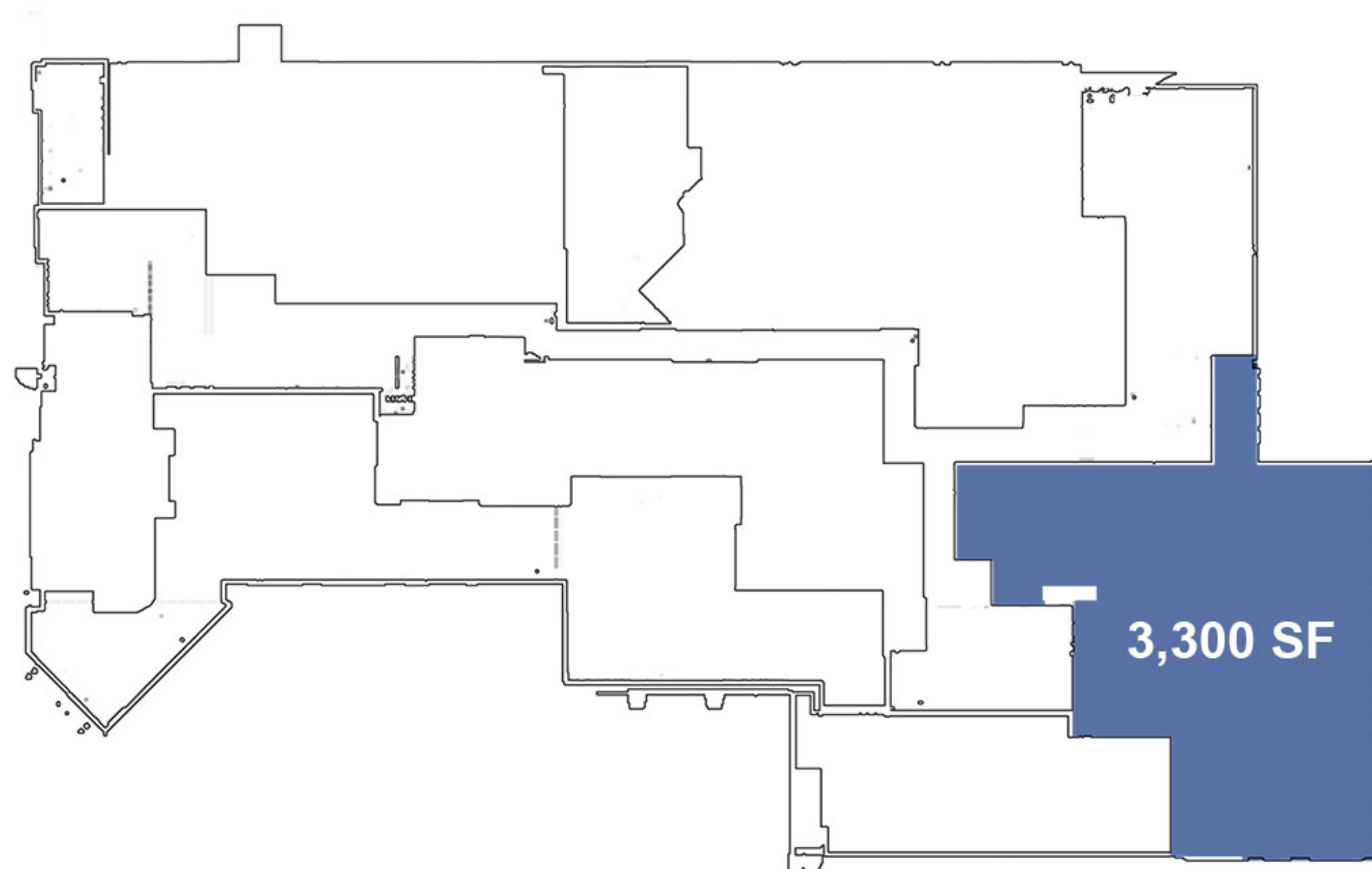


IRG
ISA REALTY GROUP

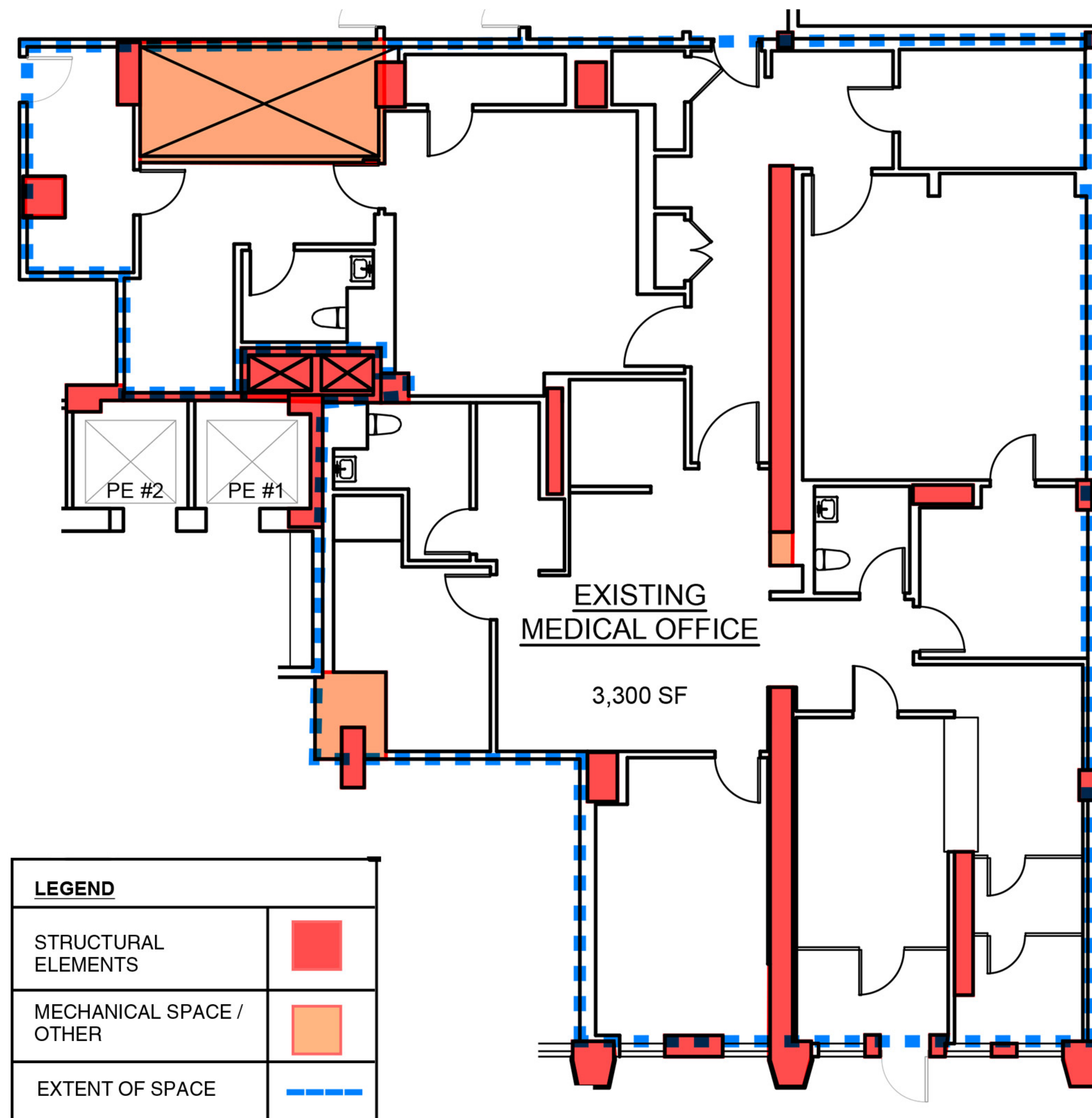
445

449 EAST 58th STREET
Between First Avenue and Sutton Place

449 EAST 58th STREET - Floorplan



58th Street



449 EAST 58th STREET

Available Space

Ground: Approx. 3,300 SF
TOTAL: Approx. 3,300 SF

Frontage.....Approx 33'
TermNegotiable
PossessionImmediate
RentUpon Request

Comments:

- Medical Space
- Formerly Advanced Vascular Care
- Dense Residential Market
- At base of a 360 Unit 47 Story Residential Tower

Neighbors:

Trader Joe's, TJ Maxx, 787 Coffee, Duane Reade, Morton Williams, Bluemercury, Sushi Ginza, Biscuits & Bath



ISA Realty Group, LLC makes no warranty, expressed or implied, as to the accuracy or completeness of this communication and any attachment.

This communication may contain errors and omissions. Nothing herein is binding on any party.

LOUIS FRANCO 212.689.1646
louis.franco@isarealtygroup.com

JACK HURLEY 212.689.0099 x3
jack.hurley@isarealtygroup.com

JOSEPH ISA 212.689.1645
joseph.isa@isarealtygroup.com

DYLAN McCULLOUGH 212.689.0099 x4
dylan.mccullough@isarealtygroup.com