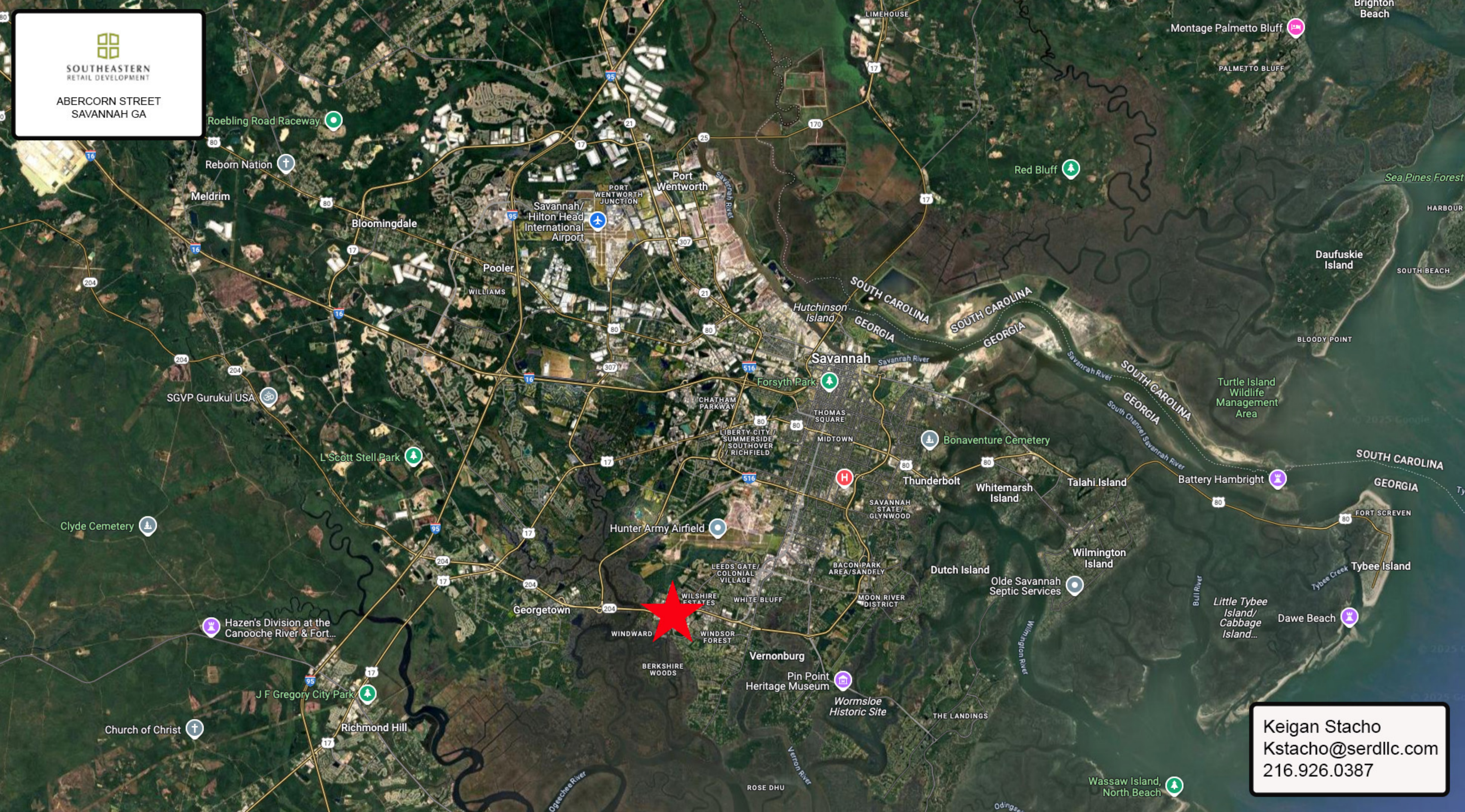


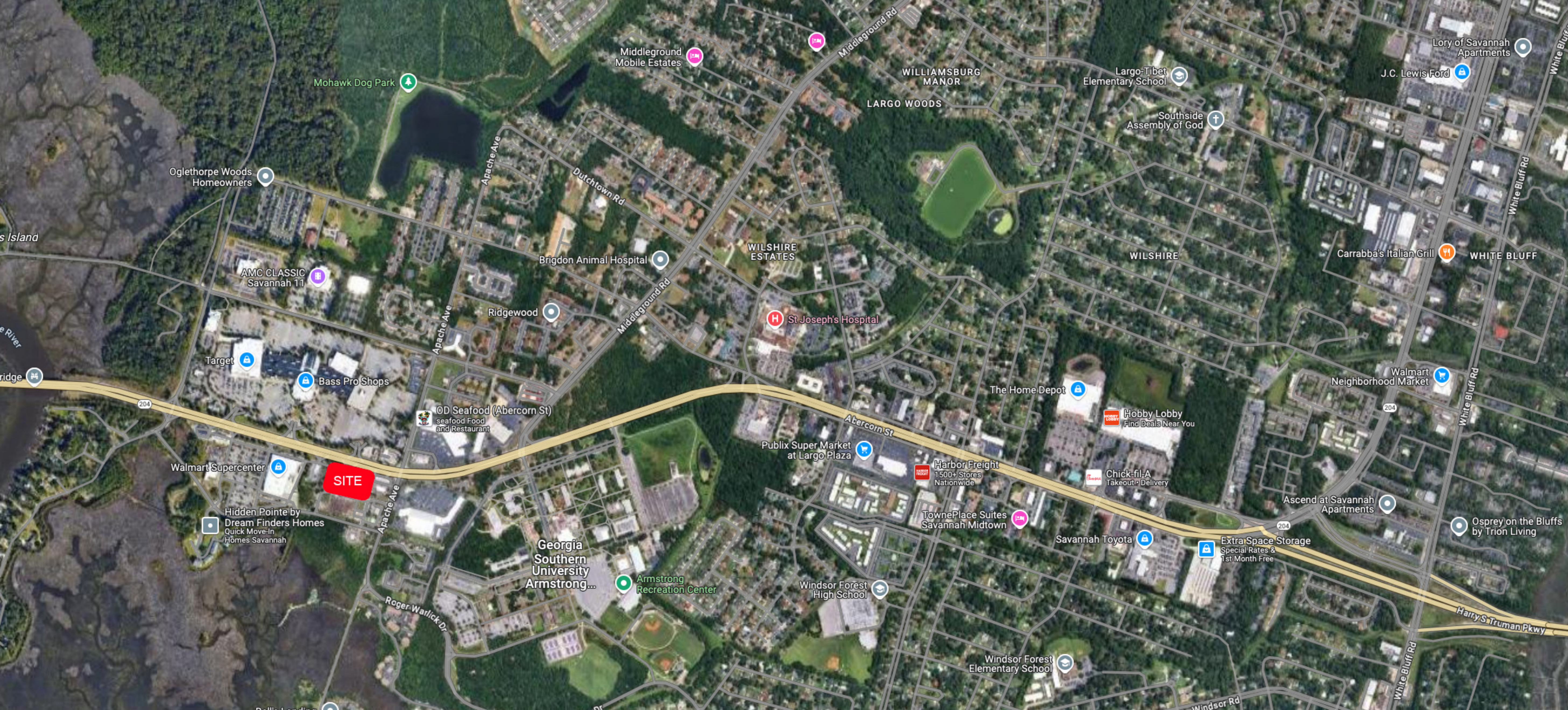


SOUTHEASTERN
RETAIL DEVELOPMENT

ABERCORN STREET
SAVANNAH GA



Keigan Stacho
Kstacho@serdllc.com
216.926.0387



SITE

Oglethorpe Woods Homeowners

AMC CLASSIC Savannah 11

Target

Bass Pro Shops

Walmart Supercenter

Hidden Pointe by Dream Finders Homes Quick Move-In Homes Savannah

Georgia Southern University Armstrong...

Armstrong Recreation Center

Brigdon Animal Hospital

Ridgewood

OD Seafood (Abercorn St) seafood Food and Restaurant

Middleground Mobile Estates

WILSHIRE ESTATES

St Joseph's Hospital

Publix Super Market at Largo Plaza

Harbor Freight 1500+ Stores Nationwide

TownePlace Suites Savannah Midtown

Windsor Forest High School

Windsor Forest Elementary School

WILLIAMSBURG MANOR

LARGO WOODS

The Home Depot

Savannah Toyota

Largo-Tibet Elementary School

Southside Assembly of God

Hobby Lobby Find Deals Near You

Chick-fil-A Takeout • Delivery

Extra Space Storage Special Rates & 1st Month Free

J.C. Lewis Ford

Carrabba's Italian Grill

Walmart Neighborhood Market

Ascend at Savannah Apartments

Osprey on the Bluffs by Trion Living

Lory of Savannah Apartments

WHITE BLUFF

Harry S Truman Pkwy



64,400 VPD

SITE

HAAF Rio Rd Gate

AMC CLASSIC Savannah 11

Hickory Grove Apartments

Lotts Island RV Campground

Southwest Chatham Library

Ridgewood

Shawnee St

Shawnee St

Hidden Lake Ct

Apache Ave

Forest Hills Apartments

Target

Fun Brands Carousel

D&A Distribution

Rendant Apartments

Truist

Bass Pro Shops

Dillard's

Ramsey Run Apartments

AppleCare Urgent Care Savannah

Carmat premium auto detailing

Hammock St

Rio Rd

Rio Rd

64,400 VPD

Verizon

OD Seafood (Abercorn St) Seafood Food and Restaurant

Elite Nails

Blue Rhino Propane Exchange

Cycle Gear

Blue Rhino Propane Exchange

McDonald's

Latinos Barbershop

Brewster St

Fulton Rd

ALDI #1 in Everyday Low Prices.

Coinstar

Walmart Supercenter

SITE

Burnett Blvd

Burnett Blvd

University Dr

Navajo Rd

Fulton Rd

Fulton Rd

Apache Ave

Ritecare Center

Health Professions Academic Building

Hidden Pointe by Dream Finders Homes Quick Move-In Homes Savannah

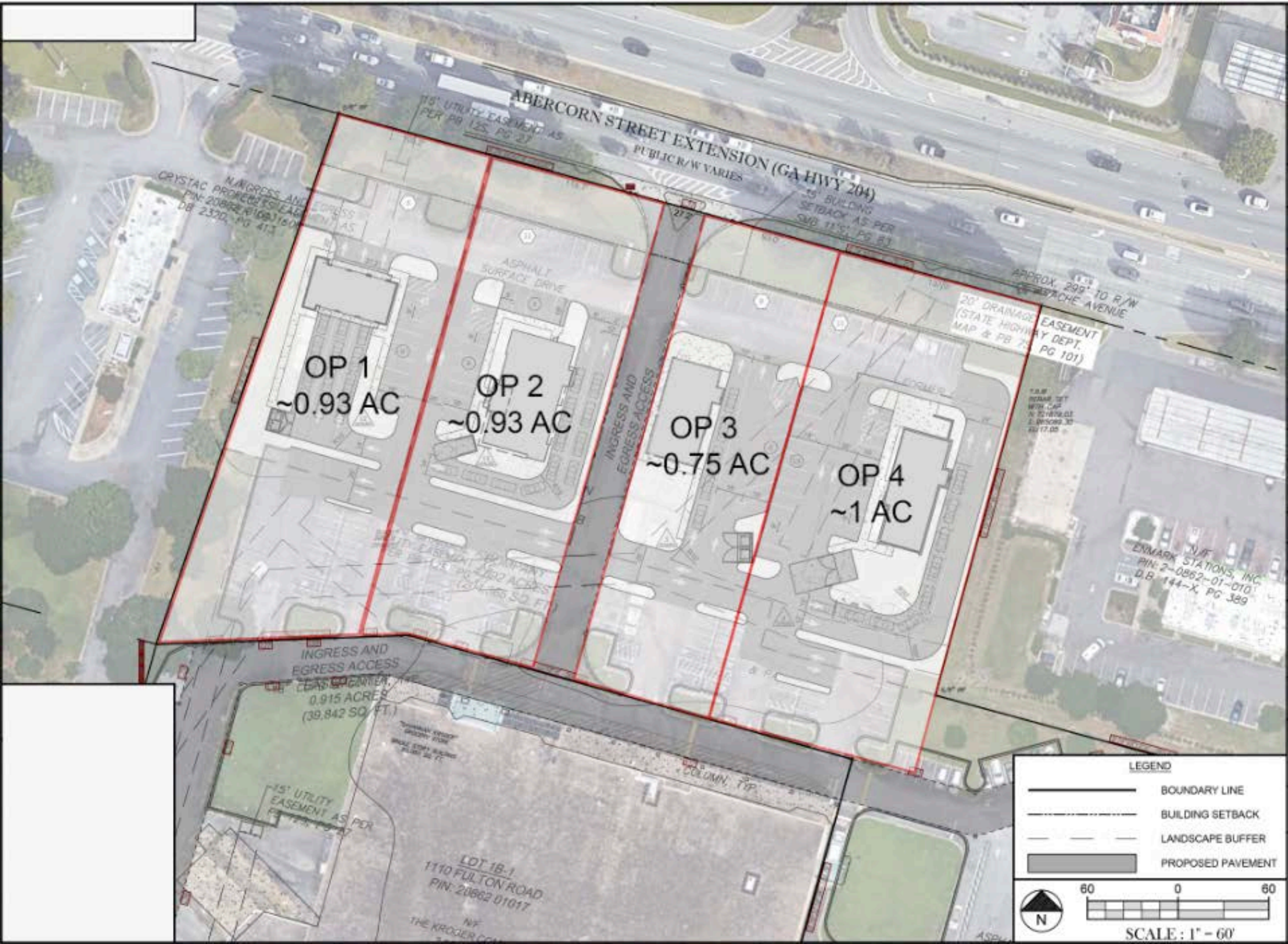
H Express Transport

University Dr

Ashmore Hall

Student Union

Hawes Hall



ABERCORN STREET EXTENSION (GA HWY 204)
PUBLIC R/W VARIES

INGRESS AND EGRESS ACCESS
CRYSTAC PROJECTS, LEASING
PIN: 20862-0100-1604
D.B. 2320, PG. 413

25' BUILDING SETBACK AS PER SUB 11'S, PG. 83

APPROX. 299' TO R/W
SABACHE AVENUE

20' DRAINAGE EASEMENT
(STATE HIGHWAY DEPT. MAP & PB 25 PG 101)

OP 1
~0.93 AC

OP 2
~0.93 AC

OP 3
~0.75 AC

OP 4
~1 AC

INGRESS AND EGRESS ACCESS

N/F ENMARK STATIONS, INC
PIN: 2-0862-01-010
D.B. 144-X, PG 389

INGRESS AND EGRESS ACCESS
EASEMENT
0.915 ACRES
(39,842 SQ. FT.)

INGRESS AND EGRESS ACCESS
EASEMENT
0.915 ACRES
(39,842 SQ. FT.)

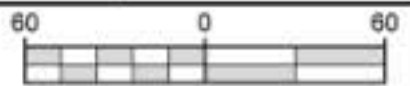
15' UTILITY EASEMENT AS PER PG. 11'S, PG. 83

LOT 1B-1
1110 FULTON ROAD
PIN: 20862 01017

N/F THE KROGER COMPANY

LEGEND

- BOUNDARY LINE
- BUILDING SETBACK
- LANDSCAPE BUFFER
- PROPOSED PAVEMENT



SCALE: 1" = 60'