



1431 W. Morehead St Charlotte, NC

1431
WEST MOREHEAD

Reimagined for the Future of Work

The FreeMoreWest neighborhood is taking shape - a place where Charlotte's industrial heritage meets modern-day vision and values.

Great food, distinct retail, and proximity to entertainment have inspired a creative mix of companies to move in and make something cool. While it's location has made planting roots here a no brainer. No other neighborhood offers such connectivity to the culture of the city.



OFFICE INVENTORY GROWTH



225%

Growth in Inventory over the last 5 years

MULTI-FAMILY GROWTH



700 Units

Delivered over the last 2 years with an additional 1,300 MF units underconstruction or planned for development.

HOME VALUE



150%

Home values have increased 150% over the last 5 years in FMW

(Source: Zillow)

Neighborhood
Cool Factor

The Perfect Place to Build Your Company's Future

This distinctive property, once a family-run manufacturing headquarters, now ushers in a new age of offices that are as real and unique as the employees they house.

After being thoughtfully restored and modernized it offers the ideal setting to write your next chapter. Open and flooded with natural light, this preserved piece of history will reignite ambition and spark inspiration.

- 1

29,802 SF OF ADAPTIVE REUSE SPACE
- 2

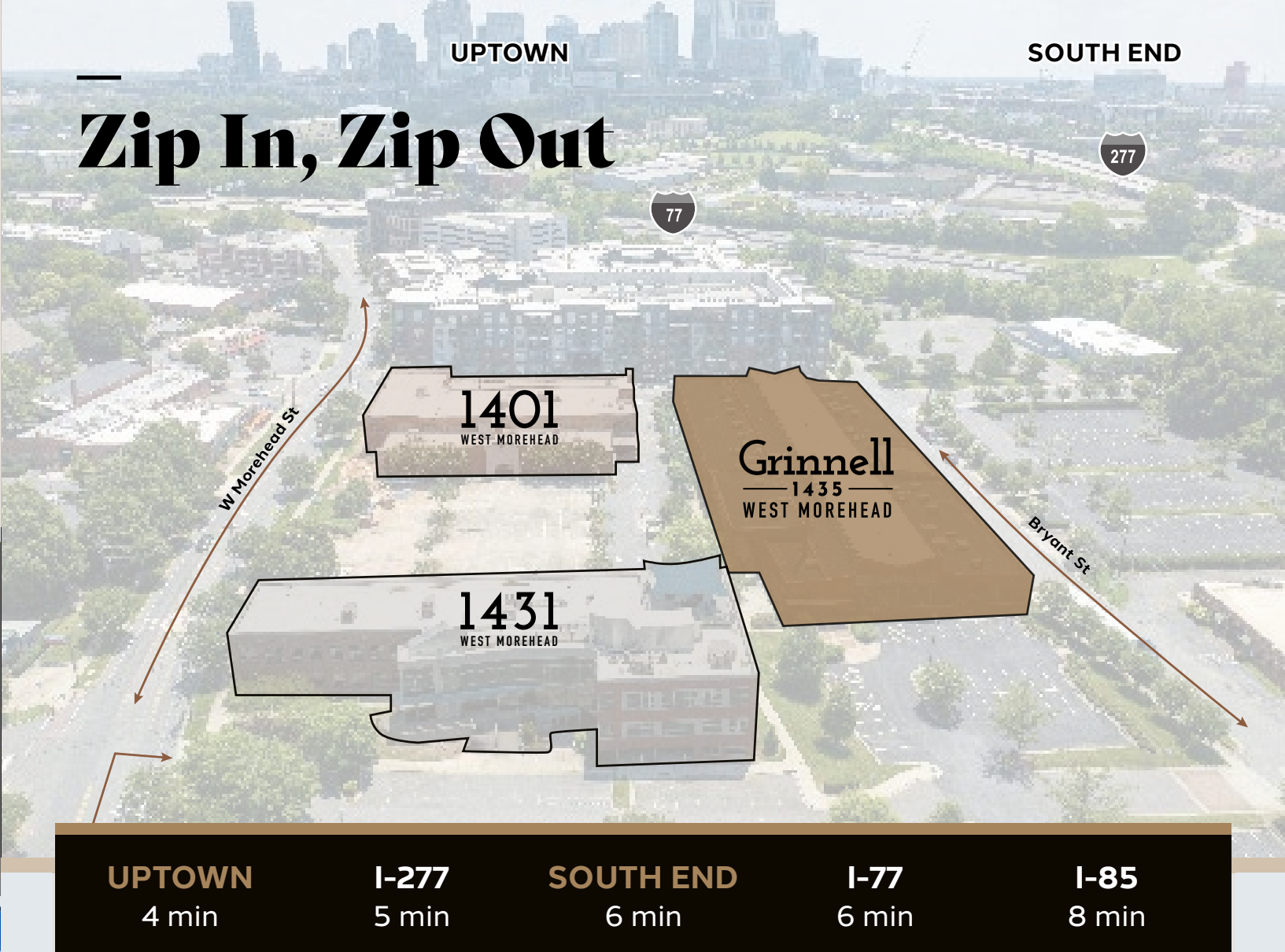
CONVENIENT DRIVE-UP PARKING
- 3

QUICK ACCESS TO I-77, I-85, AND I-277
- 4

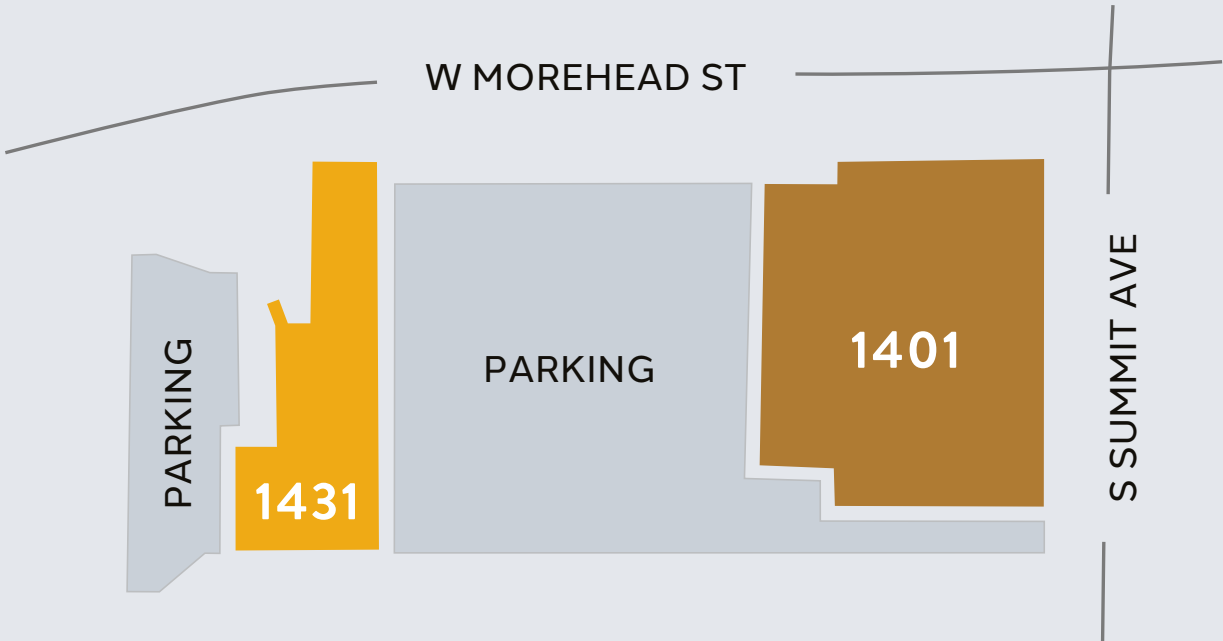
UNMATCHED SKYLINE VIEWS FROM THE ROOF TERANCE



Zip In, Zip Out



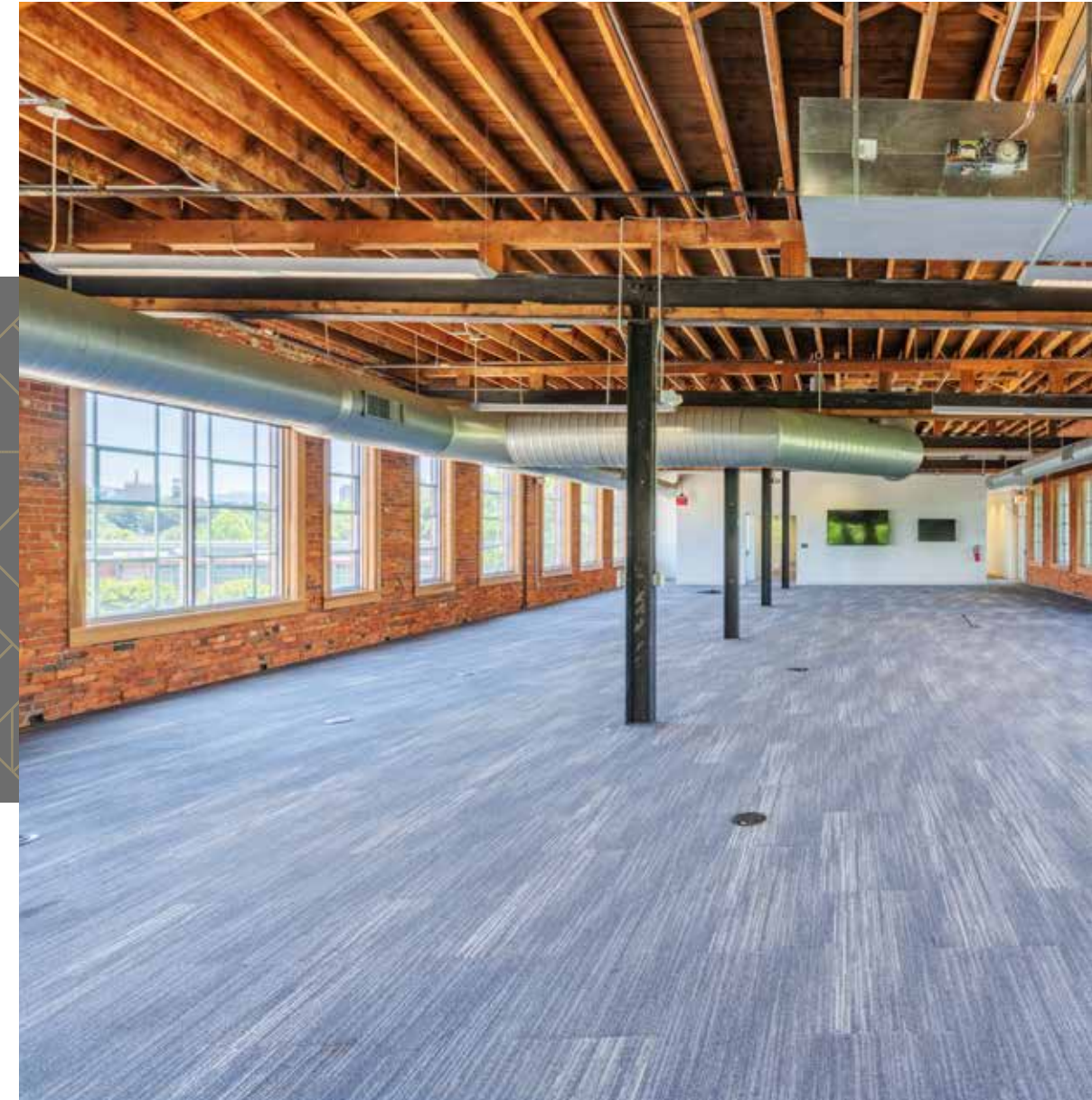
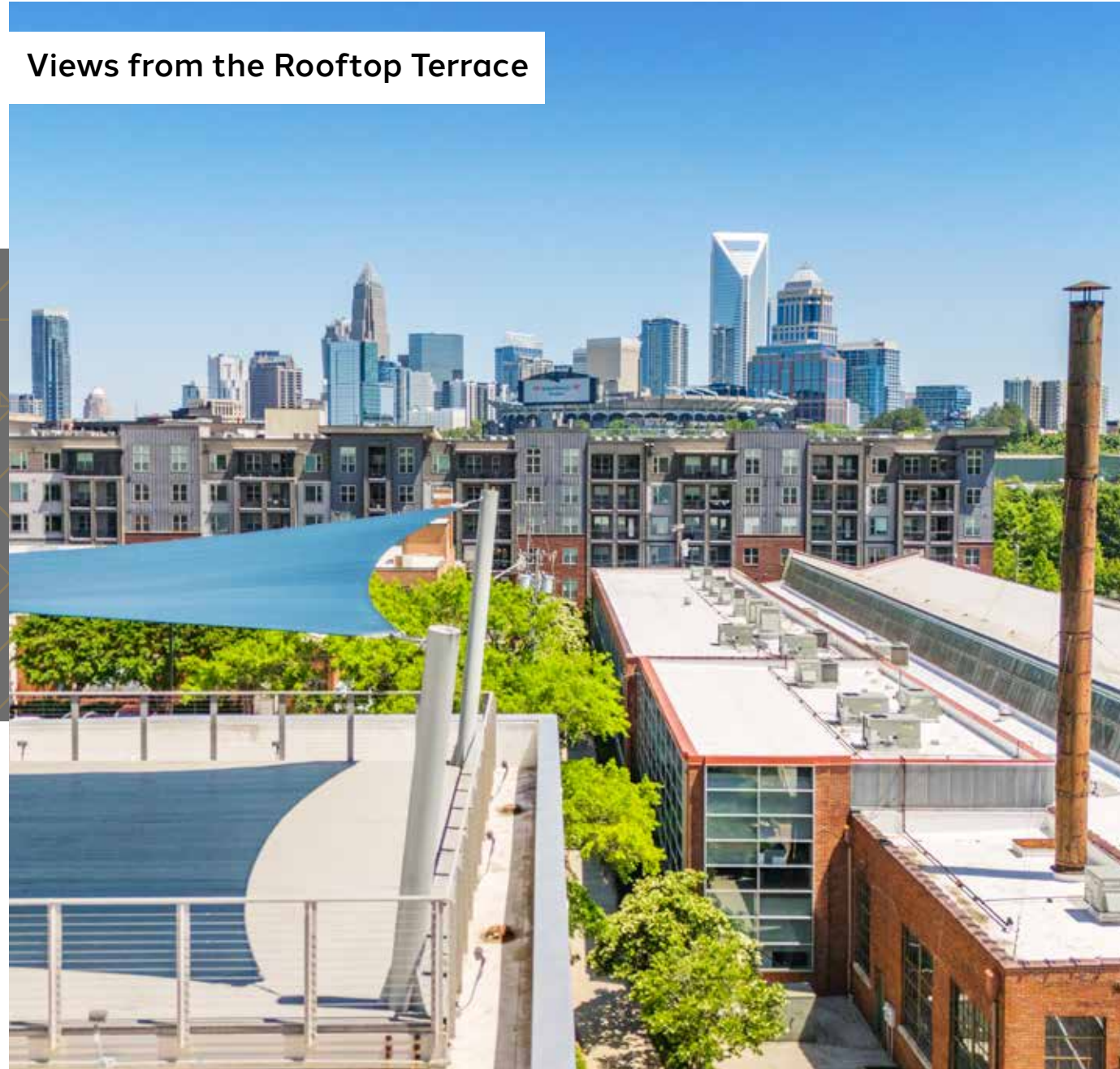
1431 WEST MOREHEAD SITE PLAN



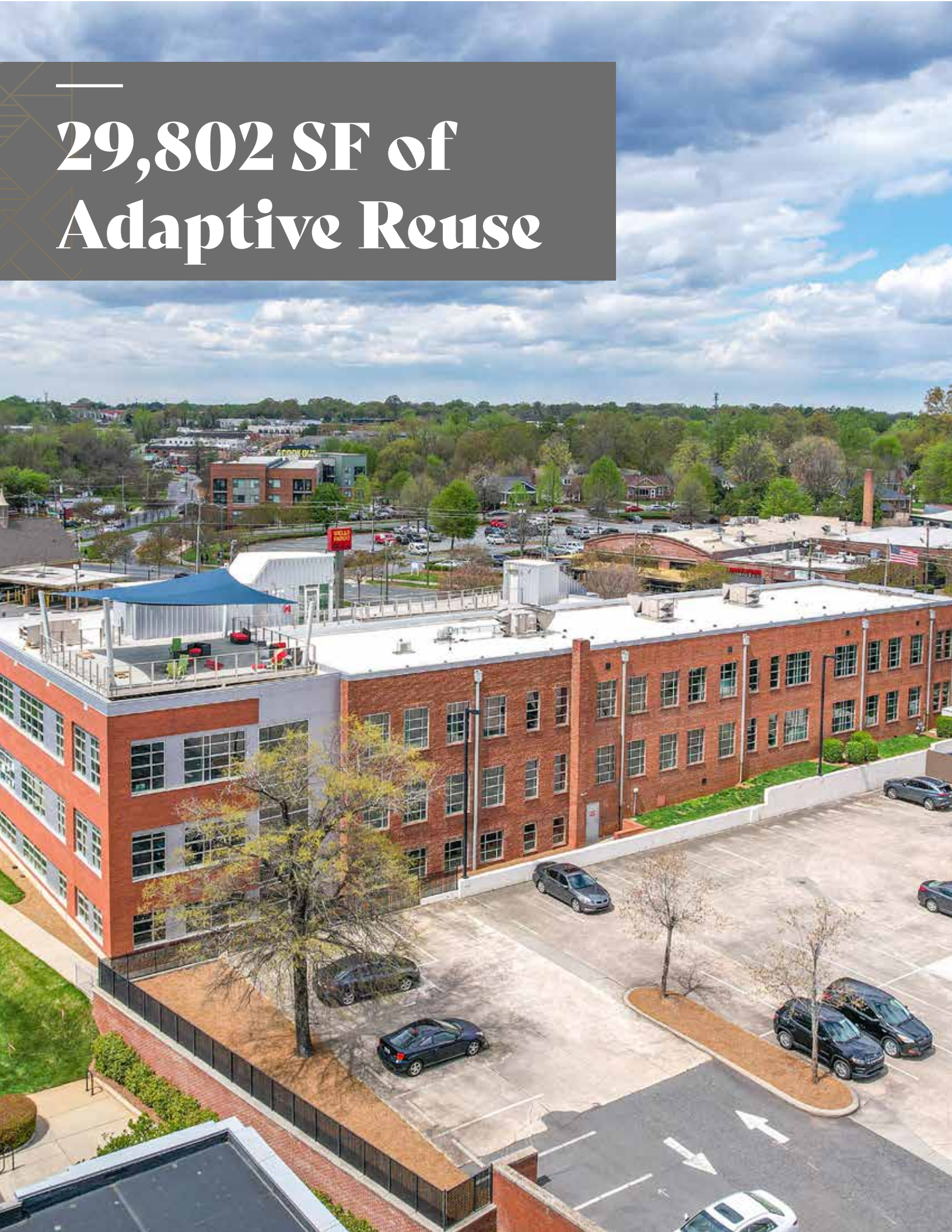
Spark your creative ambition



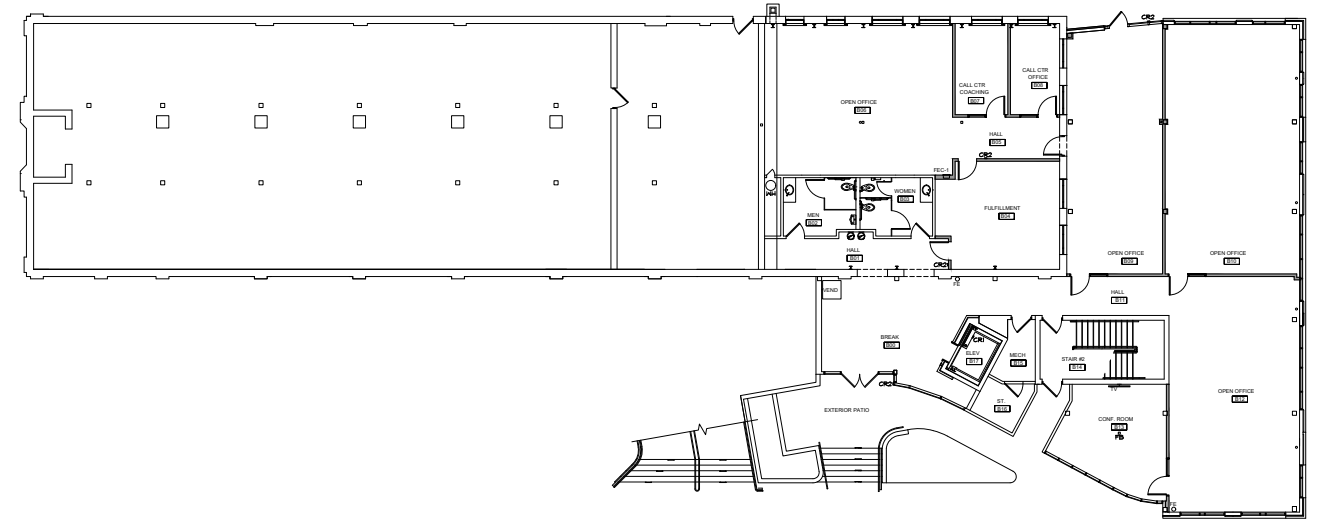
Views from the Rooftop Terrace



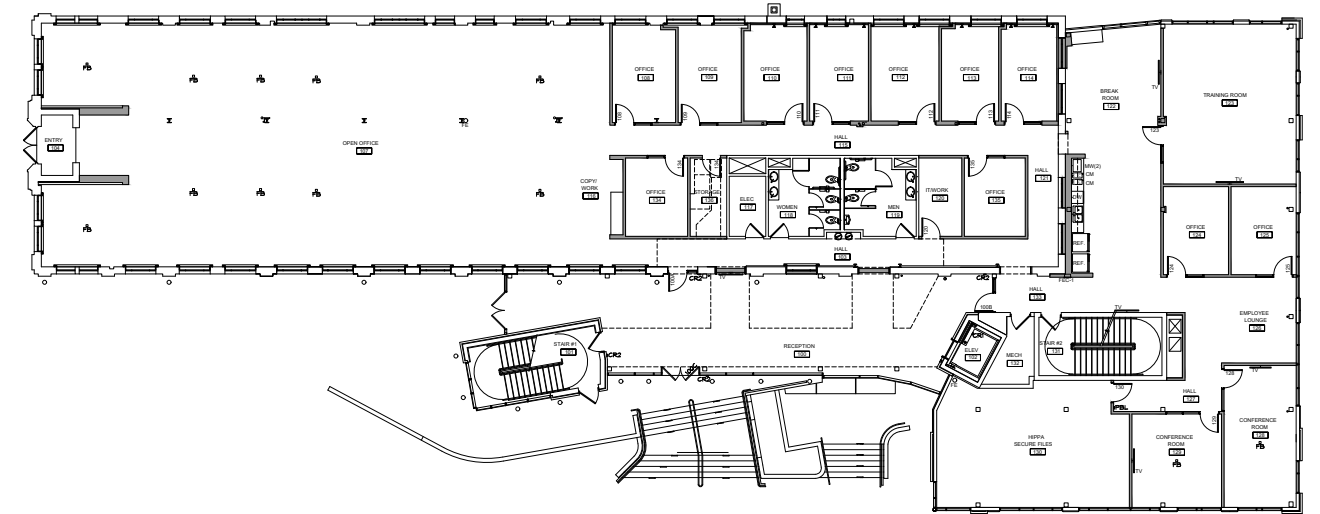
29,802 SF of Adaptive Reuse



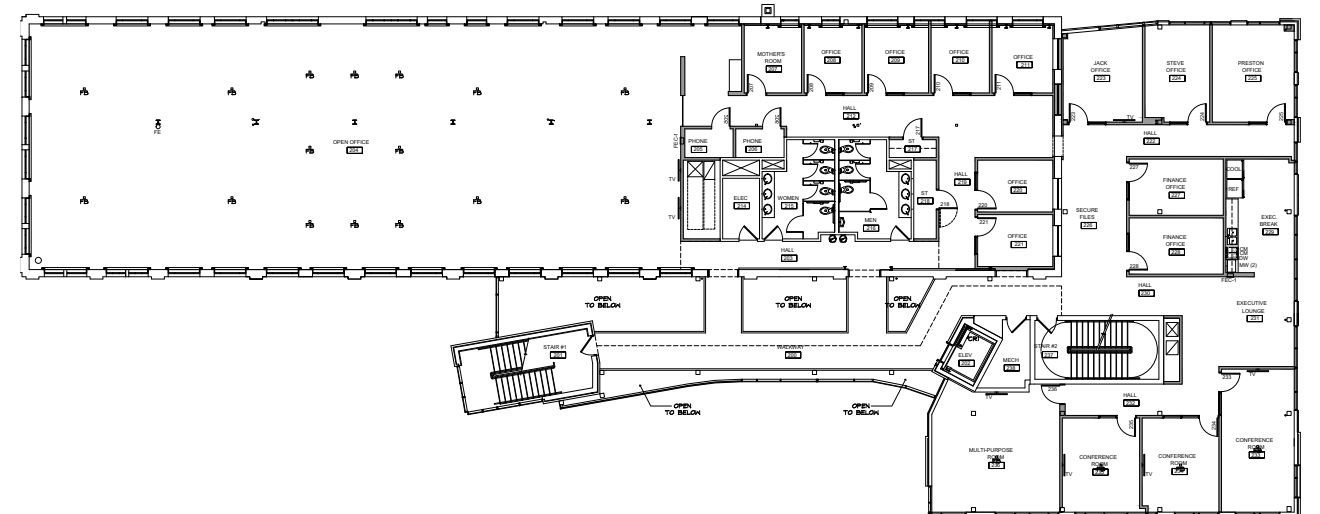
GARDEN LEVEL - 6,245 RSF



1ST FLOOR - 11,687 RSF



2ND FLOOR - 11,870 RSF





1431

WEST MOREHEAD

Contact

CHARLEY LEAVITT

704 634 82541
charley.leavitt@streamrealty.com

GRANT KEYES

980 378 1521
grant.keyes@streamrealty.com

KENNEDY FERTITTA

704 962 7430
kennedy.fertitta@streamrealty.com

**STREAM**®



SANA
PARTNERS