

1562 E Forrest Ave | East Point, Ga 30344

Available Space 5,000 – Up To 17,000

Located only seven miles south of downtown Atlanta, the city is easily accessible via I-285, I-75/85, and Marta for convenient travel Atlanta, East Point boasts a charming downtown square and is near Hartsfield Jackson International.

East Point features an impressive pedestrian bridge that spans the railroad, linking the downtown square and the Marta station to commercial developments and the south side of the city. With affordable rents, excellent infrastructure, and a strong labor force, East Point is an attractive market for office and retail tenants.



Building – 01

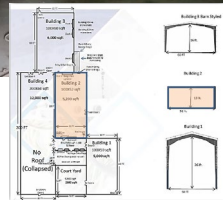
Approx. 5,000 sf



The building is approx. 5,000 sqft potential of 2 stories, The upper floor has been removed giving this building 26-foot-high ceilings as a single level, with views of the most incredible hand-carved stone walls from a time gone by.

Building – 02

Approx. 5,200 sf

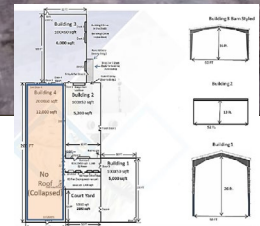


Approx. 5,200 sqft warehouse, can be used for filming or production of a good or service. The lowered 13-foot ceiling is ideal for low lighting. Perfect for that factory feel, invites your gaze to the steel-beamed structure above. Can be easily blacked out for a nighttime feel during the day! Or used to produce

- Nearby Coffee Shop and Café A Walk Away
- Historic Loft Office/Warehouse Space
- Loading Docks
- Forklift Accessible
- 24' Ceilings
- Site With Multiple Access Points for Easy Delivery
- Unbeatable Location
- Easy Access to East Point Marta Station
- Near Downtown Atlanta
- Pedestrian Access
- Close To an Array of Restaurants, Banks, Shopping, Hotels, And Business Services
- Minutes Away from Hartsfield-Jackson International Airport

Building – 04

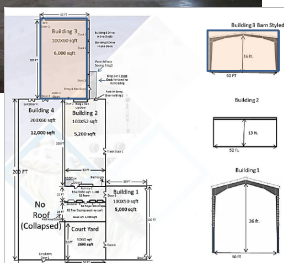
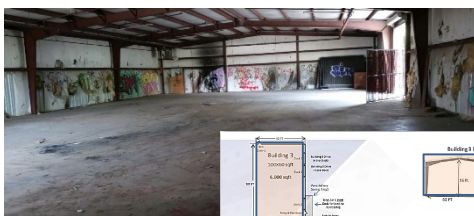
Approx. 12,000 sf



Building Four is a one-story building with approx. 12,000 sqft, but the roof is gone which offers an open-air area perfect for private outside filming. Open areas can be used for various purposes. We can also add 12,000 sqft, by adding the roof.

Building – 03

Approx. 6,000 sf



Warehouse space, approx. 6,000 sqft of smooth floors and 16-foot-high ceilings. 3 roll-up doors, one is a low dock and two are drive-in bays. Barn-styled building perfect for storing goods or service need.

CONTACT:
TIANA 404-277-2228