

\* INDICATES SHOP DWGS/SUBMITTALS ARE REQUIRED

A1.2 AS-BUILT DWGS: O&M MANUALS - PROVIDE AS-BUILT DWGS, OPERATIONS, & MAINTENANCE MANUALS (O&M) & WARRANTY INFORMATION UPON COMPLETION OF CONSTRUCTION BY EACH TRADE & ASSEMBLED BY THE GC.

A3.1 CONCRETE FOOTINGS & SLAB GRADE (SOQ) - REFER TO STRUCTURAL DWGS., CONTROL JOINTS (C/J) MAX 4'-0" ISOLATION JOINTS AT PIERS & FOUNDATION WALLS. SEAL CONCRETE W/ H&C HYDRO-REPELLENT SILOXANE #37 SEALER OR EQUIV. COORDINATE TO PDM DWGS., REFER TO STRUCTURAL DWGS.

A3.2 CONCRETE PIERS - REFER TO STRUCTURAL DESIGN & DETAILS OF THE CONCRETE PIERS ASSOCIATED W/ THE PDM COLLUMNS. COORDINATE TO PDM DWGS.

A3.3 CONCRETE UTILITY PAD - 4" THICK CONC. UTILITY PAD TO BE INSTALLED UNDER FIRE PUMP SYSTEM. COORDINATE LOCATION W/ FIRE SUPPRESSION CONTRACTOR.

A3.4 CONCRETE SIDEWALKS - INSTALL 4" CONCRETE SIDEWALKS W/ CONTROL JOINTS UP TO THE STOREFRONT DOORS, ALIGN W/ GRADE.

A4.2 BRICK VENEER SIDING - OVERSIZED (11 3/4" X 4") BRICK VENEER AT EXT. WALLS. REFER TO 3/A101 FOR LOCATION & COURSING.

AS 1180E ENGINEERED METAL BUILDING (EMBP) EQ TO 1989/1990 AISC STEEL COORDINATE W/ STRUCTURAL DWGS FOR FOOTINGS

- PRIMARY FRAMING- MODULAR RIGID FRAME SUPPORTED W/ INTERMEDIATE COLUMNS; BRACED END FRAMES; & END WALL COL

STRUCTURAL FUTURE EXPANSION:  
SECONDARY FRAMING - PLUMBING, EAVE STRIPS, FLANGE BRACING  
LATERAL BRACING - HORIZONTAL LOADS NOT RESISTED BY MAIN FRAME ACTION SHALL BE RESISTED BY CABLES  
YAW BRACING - REFER TO SECTION 05110 FOR DETAILS  
COORDINATE FOR FUTURE OPENINGS IN EXTERIOR WALL, PARTICULARLY AT OVERHEAD DOOR  
ROOF SYSTEM - REFER TO FRAME DOWNS  
FIN MATERIAL - FLASHING, INTERIOR & EXTERIOR CORNERS, CLOSURE PEGS, FASICS, INSUL, CAPS, ETC. SHALL BE THE SAME MATERIAL &  
COLOR AS ADJACENT MATERIALS  
ACCESSORIES - VENTILATORS, LOUVERS, DOORS & HARDWARE: REFER TO ARCHITECTURAL, & MECHANICAL PLANS  
LIVE LOAD - 50 PSF MIN. + DIRT  
SNOW LOAD - 25 PSF  
WIND LOAD - 15 MPH  
PRIMARY FRAME DEFLECTION - L/80  
SECONDARY FRAME DEFLECTION -  
ADDITIONAL LOADS:  
THERMAL EXP. - STANDING SEAM ROOF PANELS SHALL BE FREE TO MOVE IN RESPONSE TO THE EXPANSION & CONTRACTION FORCES  
RESULTING FROM A TEMPERATURE VARIATION.  
CORROSION RESISTANT MATERIAL  
COORDINATE W/ STRUCTURAL ENGINEERING FOR FOOTINGS & FOUNDATIONS.  
AS2 STEEL, INTEL, HEAVINGS, & JAMBER - REFER TO STRUCTURAL DOWNS FOR DETAILS.

[illegible]

A6.1 TYPICAL EXTERIOR DWDS = EQ TO ANDERSEN COMPOSITE FIXED DWDS, CLEAR DOUBLE GLAZED, INSULATED CLEAR GLAZING, LOW E, U=0.38

A6.2 TYPICAL STOREFRONT DOORS & DWDS = EQ TO KAWNEER TRIFAB, REFER TO DOOR SCHEDULE FOR SIZE & OPERATIONS.

A6.3 TYPICAL METAL EXTERIOR DOORS = EQ TO SPECIAL LITE. REFER TO DOOR SCHEDULE FOR SIZE & OPERATIONS, PROVIDE & INSTALL PRIME EXTERIOR DOORS W/ LITES AS PER DOOR SCHEDULE, PROVIDE JAMB EXTENSIONS TO ACCOMMODATE WALL THICKNESSES, U=0.77, ALL DOOR THRESHOLDS SHALL BE ADA COMPLIANT.

A10.1 FIRE EXTINGUISHERS - REFER TO SHEET A-001 FOR EXACT LOCATIONS. MULTIPURPOSE DRY-CHEMICAL TYPE.

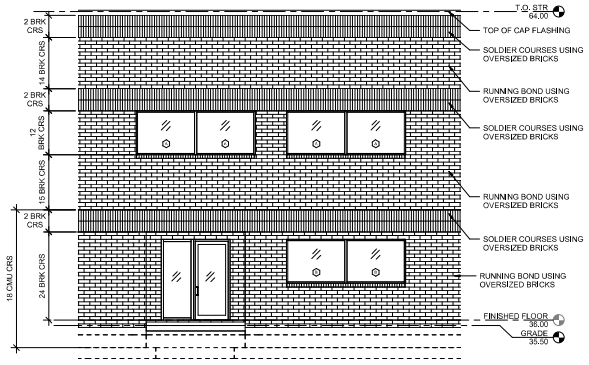
UL-RATED 10A-120B-C, 20 LB. NOMINAL CAPACITY

A13.1 PRE-FABRICATED METAL STAIRS – REFER TO A-101, A-201, A-501 & STRUCTURAL PLANS FOR DETAILS.

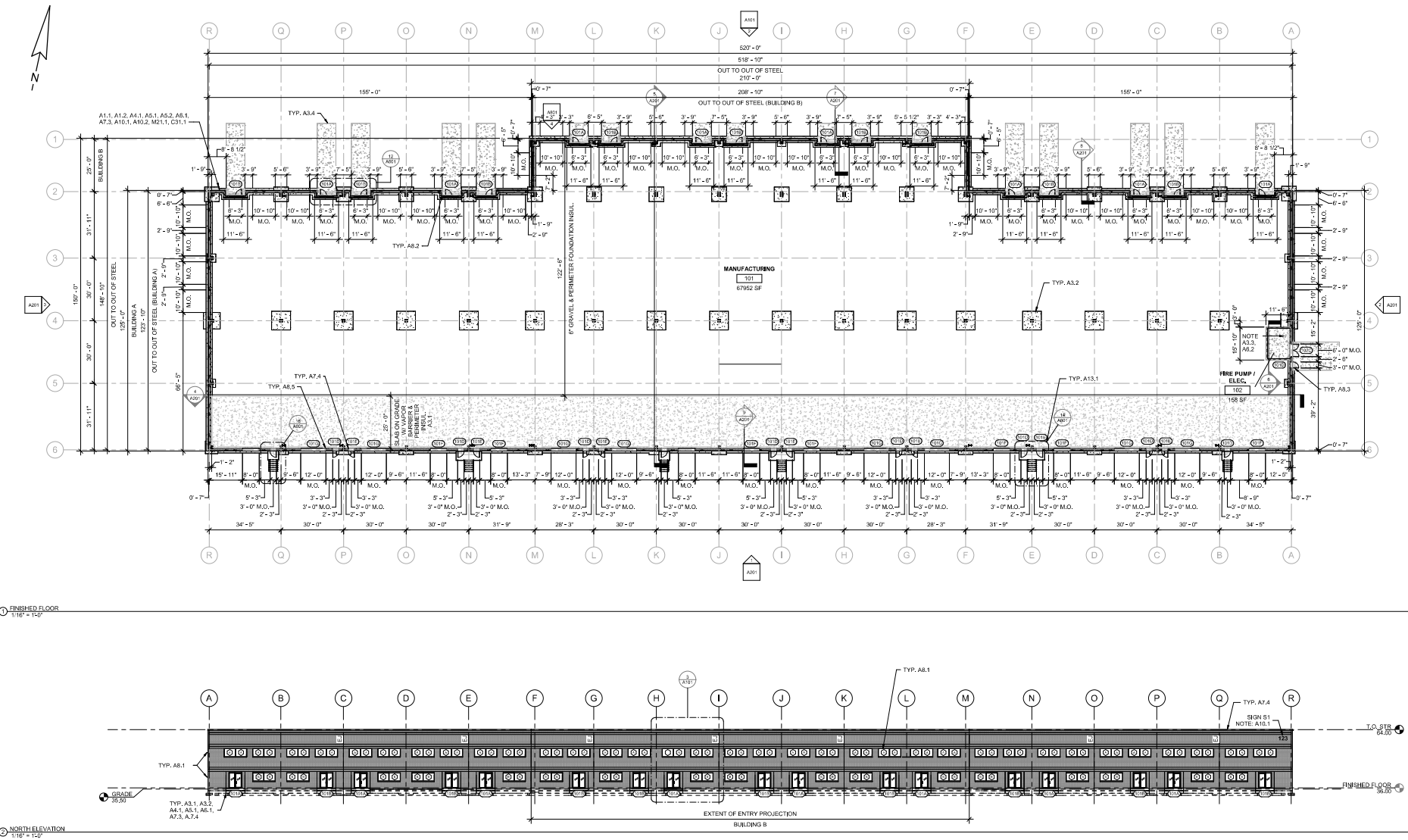
A13.2 PRE-FABRICATED METAL RAMPS – PRE-FABRICATED METAL RAMPS BY OTHERS W/ GUARD RAILS UNTIL GRADE DIFFERENCE IS LESS THAN 30". REFER TO 1/A201 FOR LOCATIONS.

M21.1 \*FIRE SUPPRESSION SYSTEM- THIS BUILDING IS TO BE FULLY SPRINKLERED UPON TENANT OCCUPANCY. THE SUBCONTRACTOR SHALL DESIGN & BUILD A COMPLETE SYSTEM AS WELL AS OBTAIN ALL NECESSARY PERMITS.

C31.1 GRADING - REGRADE DISTURBED AREA FOR POSITIVE FLOW AWAY FROM THE STRUCTURE AS PER CIVIL DWGS.



③ TYP. ENLARG. STOREFRONT ELEV. & BRICK DETAIL  
1/4" = 1'-0"



② NORTH ELEVATION  
1/16" = 1'-0"

# PROPOSED FLOOR PLANS, KEY NOTES, & ELEVATIONS

TAX MAP 331, GRID 5.00, PARCEL 4.29  
HERRING ROAD, SEAFORD, SUSSEX COUNTY, DELAWARE  
PREPARED FOR KRM DEVELOPMENT

office: 410.770.9081 |  
fax: 410.770.3697  
email: [design@rauch.com](mailto:design@rauch.com) |  
web: [www.rauch.com](http://www.rauch.com)  
Maryland Office: 106 N. Harrison  
St - Elson, MD 21601

**RAUCH**  
and development services

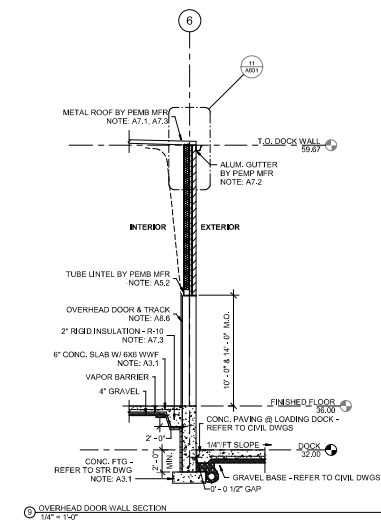
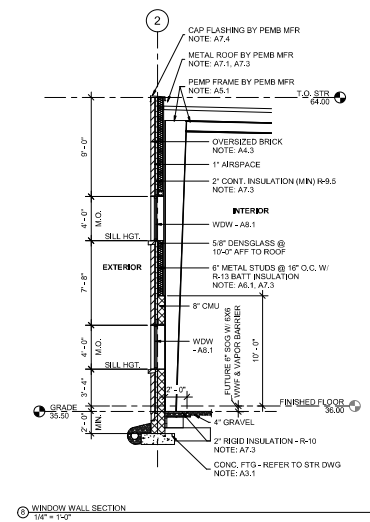
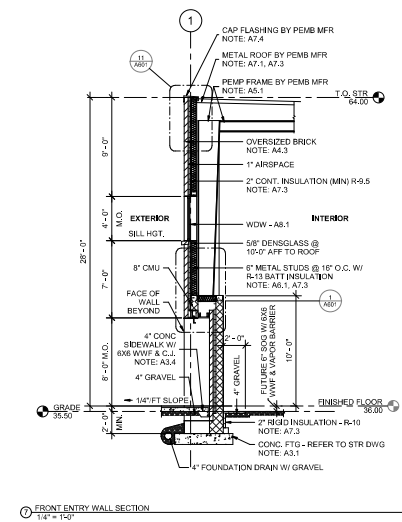
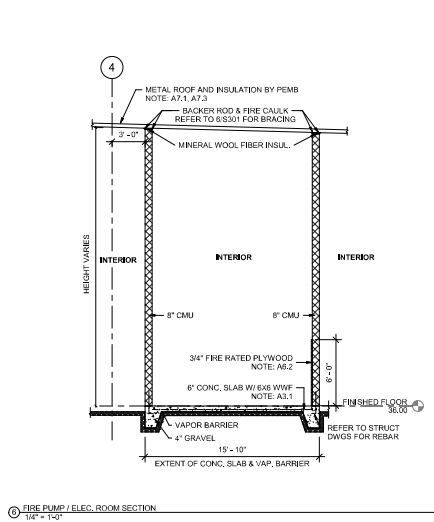
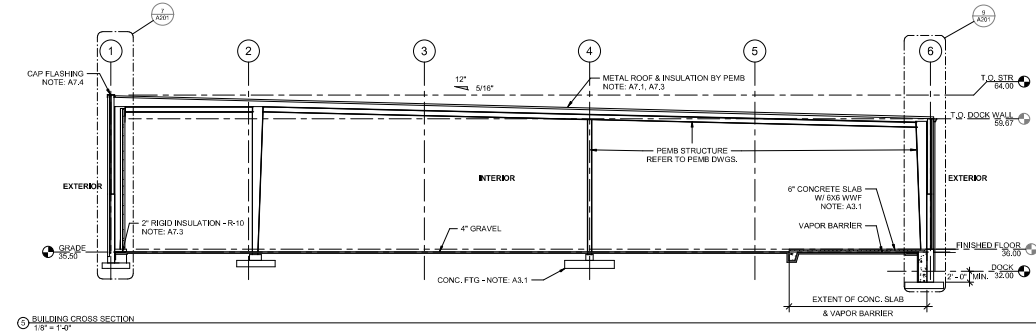
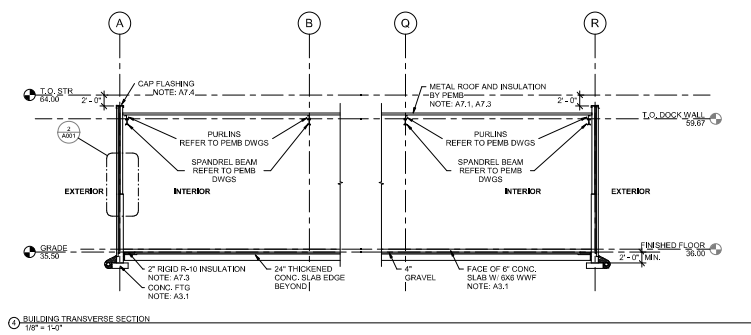
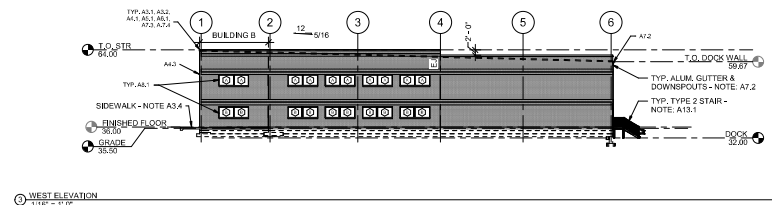
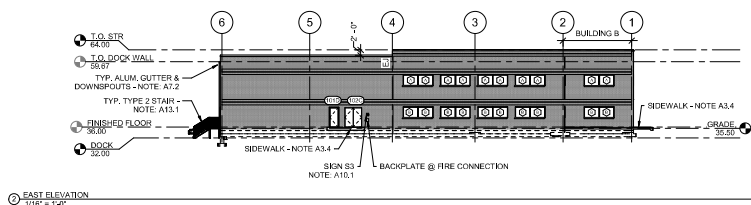
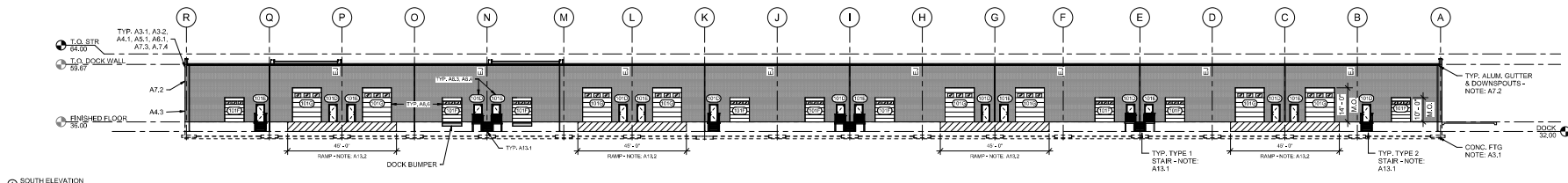


PROFESSIONAL  
CERTIFICATION  
CERTIFY THAT  
THESE DOCUMENTS  
WERE PREPARED  
BY OR APPROVED BY  
A QUALIFIED LICENSED  
ENGINEER, AND THAT I AM  
NOT PROVIDING ANY  
INFORMATION UNDER  
THE LAWS OF THIS  
STATE OF  
RELAWE.  
LICENSE NUMBER  
EXPIRATION DATE  
05-0000004  
03/03/2024

[illegible]

DATE:	5/3/2023
SCALE:	AS SHOWN
DRAWN BY:	KL
DESIGNED BY:	VR
APPROVED BY:	AS SHOWN
SHEET NO.:	<b>A101</b>

REFER TO SHEET A-101 FOR KEYNOTES  
REFER TO PEMB DWGS FOR EXACT COLL. LOCATIONS  
REFER TO STR DWGS FOR ADD. INFO



# KRM - SEAFORD - BUILDING 1

TAX MAP 331, GRID 5.00, PARCELS 4, 29  
HURNING ROAD, SEAFORD, SUSSEX COUNTY, DELAWARE  
PREPARED FOR KRM DEVELOPMENT

Office: 412.778.0001 |  
Email: design@rauch.com |  
Project Office: 100 N. Harrison  
B-1, Landon, MD 21101



REVISIONS		DATE	DESCRIPTION
REV. 1	DATE		
DATE	5/3/2023		
SCALE	AS SHOWN		
DRAWN BY	RL		
DESIGNED BY	VR		
APPROVED BY	AS SHOWN		
SHEET NO: A201			